



*Free Spirit*

# Earth Made Paradise Quilt

Featuring Earth Made Paradise by  
Kathy Doughty

Nature's warmth is celebrated in this simple quilt featuring Earth Made Paradise by Kathy Doughty.

<b>Collection:</b>	Earth Made Paradise by Kathy Doughty
<b>Technique:</b>	Strip Piecing, Quilting
<b>Skill Level:</b>	Beginner
<b>Finished Size:</b>	<b>Finished Size:</b> 64" (162.56cm) square <b>Finished Block Size:</b> 8" x 16" (20.32cm x 40.64cm) , 8" (20.32cm) square

*All possible care has been taken to assure the accuracy of this pattern. We are not responsible for printing errors or the manner in which individual work varies. Please read the instructions carefully before starting this project. If kitting it is recommended a sample is made to confirm accuracy.*

Project designed by Kathy Doughty | Tech edited by Alison M. Schmidt

## Fabric Requirements

DESIGN	COLOR	ITEM ID	YARDAGE
(A) Earthmaid	Sky	PWMO053.SKY	18" x 21"
(B) Budgie Boogie	Coral	PWMO048.CORAL	1/3 yard (0.30m)
(C) Budgie Babies	Pastel	PWMO047.PASTEL	1/3 yard (0.30m)
(D) Plaid	Warm	PWMO039.WARM	1 1/4 yards (1.14m)
(E) Abundance	Cream	PWMO046.CREAM	1/3 yard (0.30m)
(F) Budgie Boogie	Slate	PWMO048.SLATE	7/8 yard (0.80m)
(G) Ivy	Warm	PWMO049.WARM	3/4 yard (0.69m)
(H) Wallpaper	Lilac	PWMO052.LILAC	5/8 yard (0.57m)
(I) Wallpaper	Gold	PWMO052.GOLD	1/2 yard (0.46m)
(J) Radiance	Cool	PWMO050.COOL	1/2 yard (0.46m)
(K) Radiance	Warm	PWMO050.WARM*	5/8 yard (0.57m)

\* includes binding

## Backing (Purchased Separately)

**44" (111.76cm) wide**

Brick Stone PWMO055.STONE 4 yards (3.66m)

**OR**

**108" (274.32cm) wide**

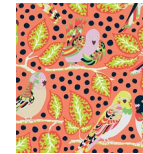
2 yards (1.83m)

## Additional Recommendations

- 100% cotton thread in colors to match
- 72" (182.88cm) square batting



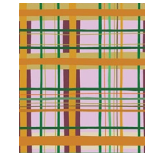
(A)



(B)



(C)



(D)



(E)



(F)



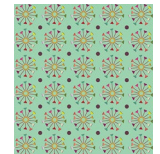
(G)



(H)



(I)



(J)



(K)



**Backing  
44"  
(111.76cm)**

## Cutting

**WOF = Width of Fabric.**

### Fabric A, cut:

(1) 16½" square

### Fabrics B and C, cut from each:

(1) 8½" x WOF; sub-cut  
(4) 8½" squares

### Fabric D, cut:

(4) 8½" x WOF; sub-cut  
(4) 8½" x 16½" rectangles and  
(8) 8½" squares

### Fabric E, cut:

(1) 8⅞" x WOF; sub-cut  
(2) 8⅞" squares, cut once on the diagonal for  
(4) large triangles

### Fabric F, cut:

(1) 2⅞" x WOF; sub-cut  
(8) 2⅞" squares, cut once on the diagonal for  
(16) small triangles  
(8) 2½" x WOF for strip piecing

### Fabric G, cut:

(1) 2½" x WOF; sub-cut  
(8) 2½" squares  
(8) 2½" x WOF for strip piecing

### Fabric H, cut:

(1) 2½" x WOF; sub-cut  
(12) 2½" squares  
(6) 2½" x WOF for strip piecing

### Fabric I, cut:

(6) 2½" x WOF for strip piecing

### Fabric J, cut:

(1) 2½" x WOF; sub-cut  
(4) 2½" squares  
(4) 2½" x WOF for strip piecing

### Fabric K, cut:

(8) 2½" x WOF for binding

## Instructions

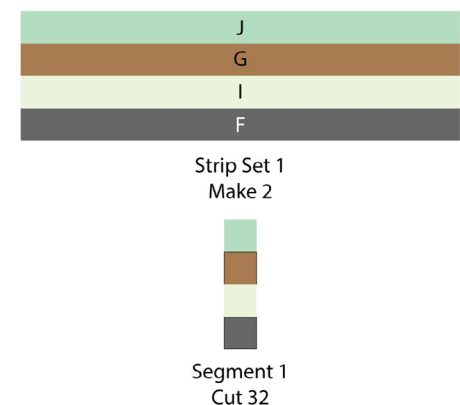
*All seam allowances are ¼" and pieces are sewn right sides together. Press seam allowances as indicated in the diagrams.*

### Strip Sets

**Note:** *When sewing strip sets, keep the same end of the strips even to ensure the completed strip set will be the length needed and sew the strips together from opposite ends to avoid the seams curving.*

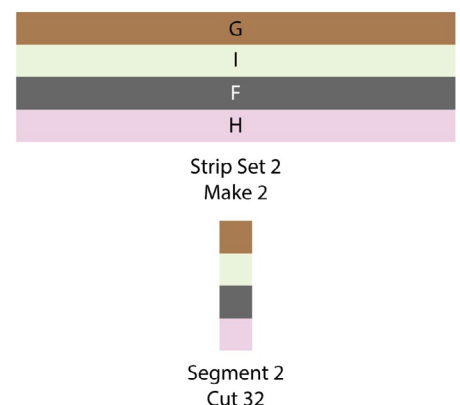
1. Sew together, in order, (1) each **Fabric J, G, I,** and **F** 2½" strip, along the long edges to make (1) Strip Set 1 (8½" x WOF). Repeat to make (2) Strip Set 1. Cut (32) 2½" x 8½" Segment 1. (**Fig. 1**)

**Fig. 1**



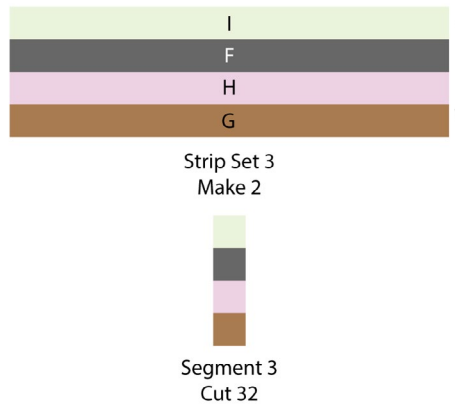
2. Sew together (1) each **Fabric G, I, F,** and **H** 2½" strip to make (1) Strip Set 2 (8½" x WOF). Repeat to make (2) Strip Set 2. Cut (32) 2½" x 8½" Segment 2. (**Fig. 2**)

**Fig. 2**



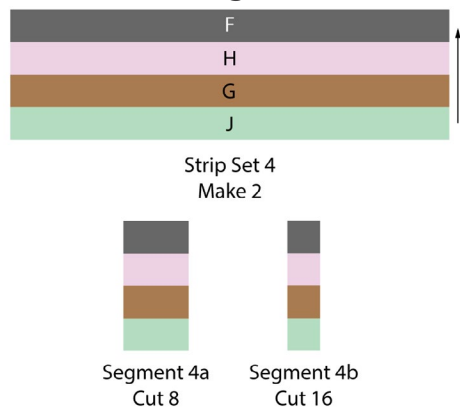
3. Sew together (1) each **Fabric I, F, H, and G** 2½" strip to make (1) Strip Set 3 (8½" x WOF). Repeat to make (2) Strip Set 3. Cut (32) 2½" x 8½" Segment 3. (**Fig. 3**)

**Fig. 3**



4. Sew together (1) each **Fabric F, H, G, and J** 2½" strip to make (1) Strip Set 4 (8½" x WOF). Repeat to make (2) Strip Set 4. Cut (8) 4½" x 8½" Segment 4a and (16) 2½" x 8½" Segment 4b. (**Fig. 4**)

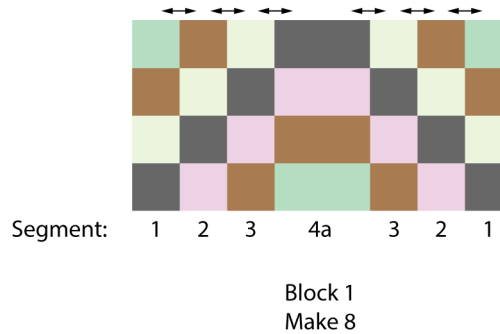
**Fig. 4**



## Blocks

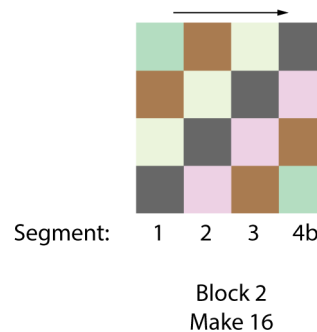
5. Sew together, in order, (1) Segment 1, 2, 3, 4a, 3, 2, and 1 as shown to complete (1) Block 1 (8½" x 16½"). (**Fig. 5**) Repeat to make (8) Block 1.

**Fig. 5**



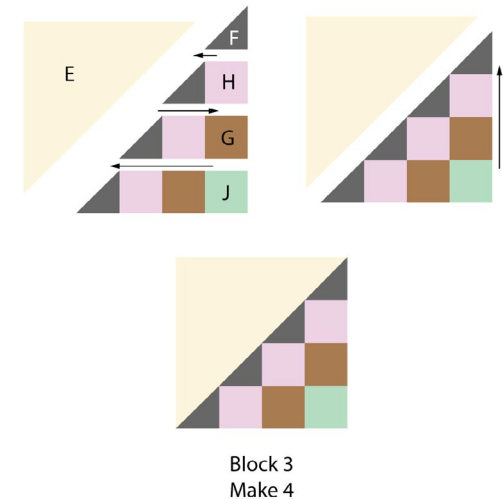
6. Sew together, in order, (1) Segment 1, 2, 3, and 4b to complete (1) Block 2 (8½" square). (**Fig. 6**) Repeat to make (16) Block 2.

**Fig. 6**



7. Lay out (3) **Fabric H**, (2) **Fabric G**, and (1) **Fabric J** 2½" square and (4) **Fabric F** small and (1) **Fabric E** large triangle. (**Fig. 7**) Sew the squares and small triangles into rows. Sew the rows together into a triangle and sew to the large triangle to complete (1) Block 3. If needed, trim from the **Fabric E** sides to 8½" square. Repeat to make (4) Block 3.

**Fig. 7**



## Quilt Top Assembly

**Note:** Follow the **Quilt Layout** diagram on page 6 while assembling the quilt.

8. Sew together (1) Block 1, (2) Block 2, (2) Block 3, and (2)  $8\frac{1}{2}$ " **Fabric D** squares, noting the orientation of the Blocks, to make (1) Row 1 ( $8\frac{1}{2}$ " x  $64\frac{1}{2}$ "). Repeat to make (2) Row 1.
9. Sew together (4) Block 2, (2)  $8\frac{1}{2}$ " **Fabric C** squares, and (1)  $8\frac{1}{2}$ " x  $16\frac{1}{2}$ " **Fabric D** rectangle, noting the orientation of the Block 2, to make (1) Row 2 ( $8\frac{1}{2}$ " x  $64\frac{1}{2}$ "). Repeat to make (2) Row 2.
10. Sew together (1) Block 1, (2) Block 2, and (2) each **Fabric B** and **D**  $8\frac{1}{2}$ " squares, noting the orientation of the Blocks, to make (1) Row 3 ( $8\frac{1}{2}$ " x  $64\frac{1}{2}$ "). Repeat to make (2) Row 3.
11. Sew together (4) Block 1, (2)  $8\frac{1}{2}$ " x  $16\frac{1}{2}$ " **Fabric D** rectangles, and (1)  $16\frac{1}{2}$ " **Fabric A** square, noting the orientation of Block 1, to make Row 4 ( $16\frac{1}{2}$ " x  $64\frac{1}{2}$ ").
12. Sew the Rows together, noting their orientation, to complete the Quilt Top ( $64\frac{1}{2}$ " square).

## Finishing

13. Sew together the  $2\frac{1}{2}$ " **Fabric K** binding strips end-to-end using diagonal seams. Trim the seam allowance to  $\frac{1}{4}$ ". Press seams open. Press the binding strip in half wrong sides together.
14. Layer backing (wrong side up), batting, and quilt top (right side up). Baste the layers together and quilt as desired. Trim excess batting and backing even with the top after quilting is completed.
15. Leaving an 8" tail of binding, sew the binding to the top of the quilt through all layers matching all raw edges. Miter corners. Stop approximately 12" from where you started. Lay both loose ends of binding flat along quilt edge. Where the loose ends meet, fold them back on themselves and press to form a crease. Using this crease as your stitching line, sew the two open ends of the binding right sides together. Trim seam to  $\frac{1}{4}$ " and press open. Finish sewing binding to quilt.
16. Turn the binding to the back of quilt and hand-stitch in place.

## Quilt Layout

