

*Shannon Christensen's*  
**LOVE LETTERS**





**Quilt:** Letters from Home, 70" x 80"

**Maker:** Stephanie Atwood

PATTERN FOR SALE: [CRIMSONTATE.COM](http://CRIMSONTATE.COM)





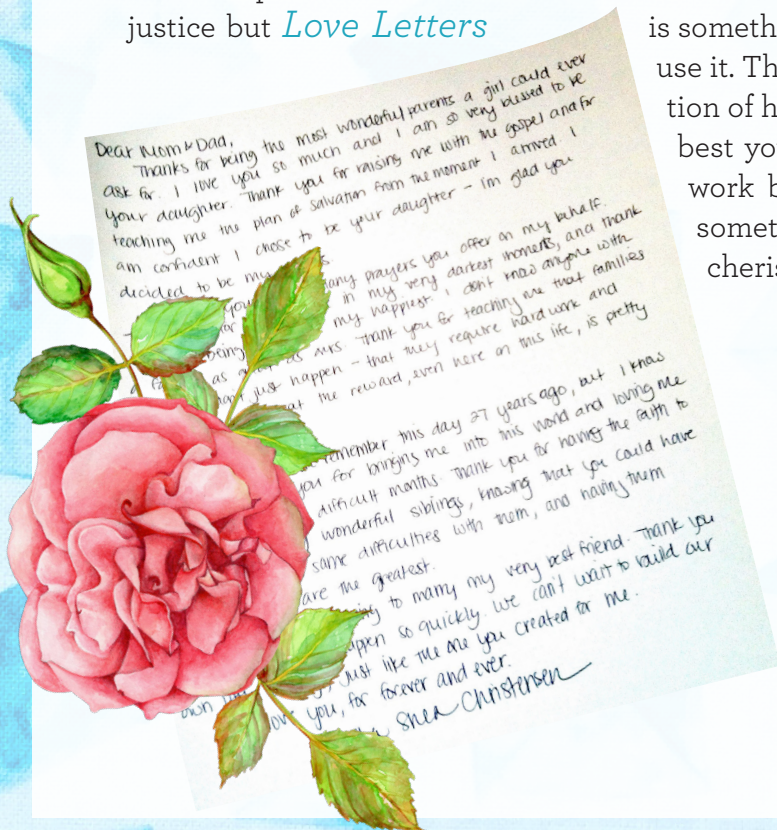
Because everyone should get a teal envelope,  
at least once in awhile ☺

I tried creating this collection five years ago and it didn't turn out well. Most likely, it was still too raw. By too raw, I mean she'd only been gone a year. "She" is Leila, our oldest daughter. The feelings of her passing must have been too much on the surface to make a fabric collection inspired by her. For my second Windham fabric collection I wanted to try again.

*Love Letters* is bits and pieces of Leila. The color teal was her favorite. She used it personally and professionally. People even wore it to her funeral. Her favorite flowers - lilacs, peonies and roses were planted around her home. Then, there were the letters. She wrote so many heartfelt notes. She would sign outside of the envelopes with the phrase, "Because everyone should get a teal envelope at least once in awhile." Leila was full of love—*Love for people and life*.

How do I put all of that in a fabric collection? I can't, but I did my best. I don't know if I did her justice but *Love Letters*

is something that will remind me of Leila every time I use it. The flowers, letters, colors and love are a reflection of her. Much like the quilts you make, you do the best you can. You might not feel like it's your best work but nonetheless it's a reflection of you. It's something you, like Leila, leave behind to be cherished always.



*Shannon*

**ON THE COVER:**

Dress: "Hattie" Violette Field Threads  
Maker: Alison J. O'Grady, Sew Bee It Clothier  
Trunk: made by Shannon Christensen



Quilt: *Bordered Nine-Patch*, 73" x 73"  
Makers: Geri Olayan • Linda McMahon  
PATTERN FOR SALE: MISSOURIQUILTCO.COM

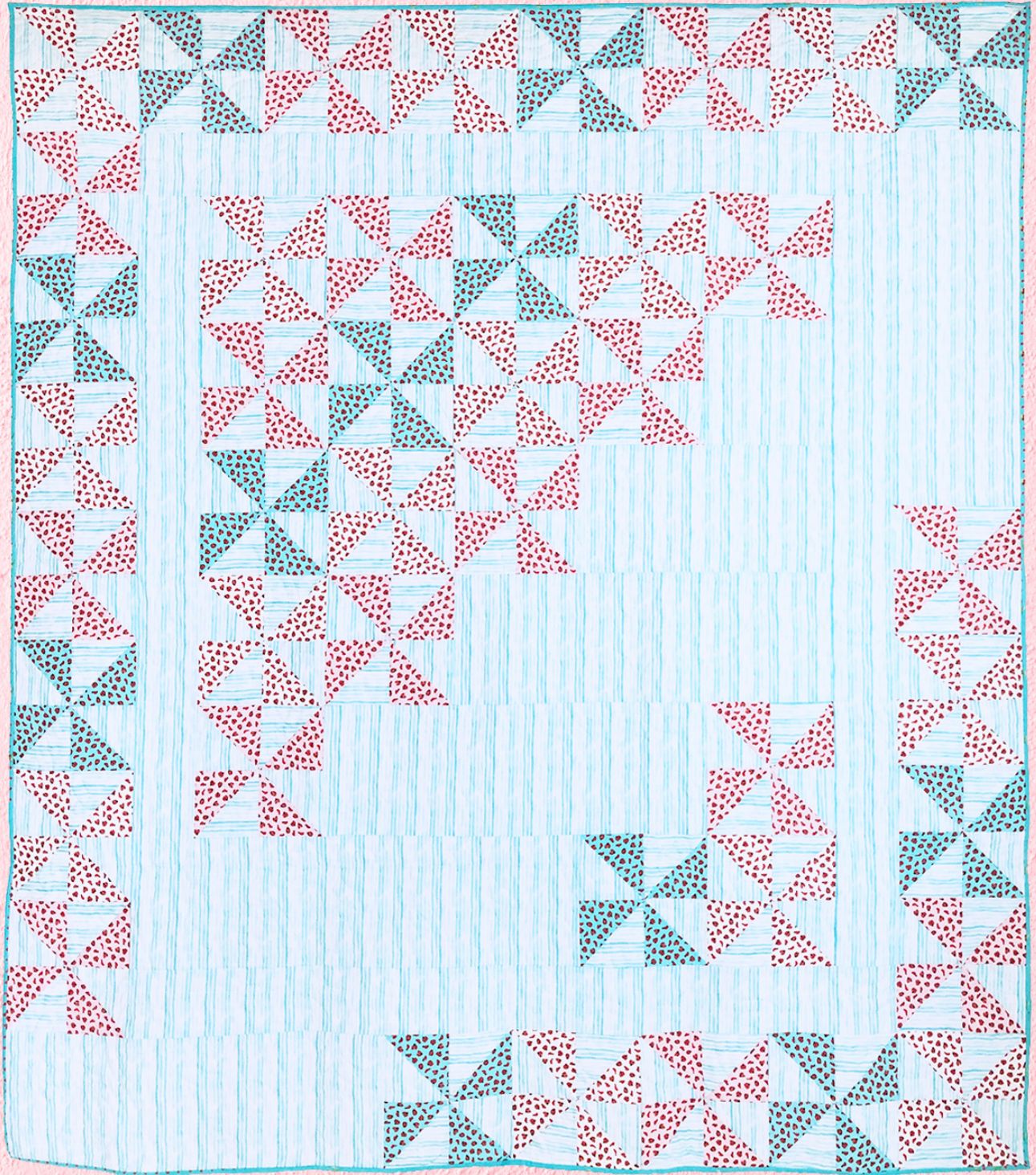




Quilt: *Spring Spin*, 72" x 80"

By: Bev Getschel, Maker: Stephanie Atwood

PATTERN FROM MCCALL'S QUICK QUILTS, APRIL/MAY 2016 ISSUE





**Quilt:** Pocketful of Sunshine, (with working pockets) 66" x 99"

**Pillow:** Big Pillow Little House, 24" x 24"

Pattern from the book *Bring Happy to Your Home* By Shannon Christensen

Maker: Shannon Christensen, Quilter: Stephanie Atwood





**SHARE YOUR PROJECTS:**

[#WINDHAMFABRICS](#)

[#LOVELETTERS FABRICS](#)

[#SHAREITWITHSHANNON](#)



Quilt: Meadowland, 48" x 48"

Maker: Stephanie Atwood

PATTERN FOR SALE: [THENCAMEJUNE.COM](http://thencamejune.com)





Dress: Southern Belle

Maker: Laura Nash

PATTERN FOR SALE: [SEWCHICPATTERNS.COM](http://SEWCHICPATTERNS.COM)

samantha

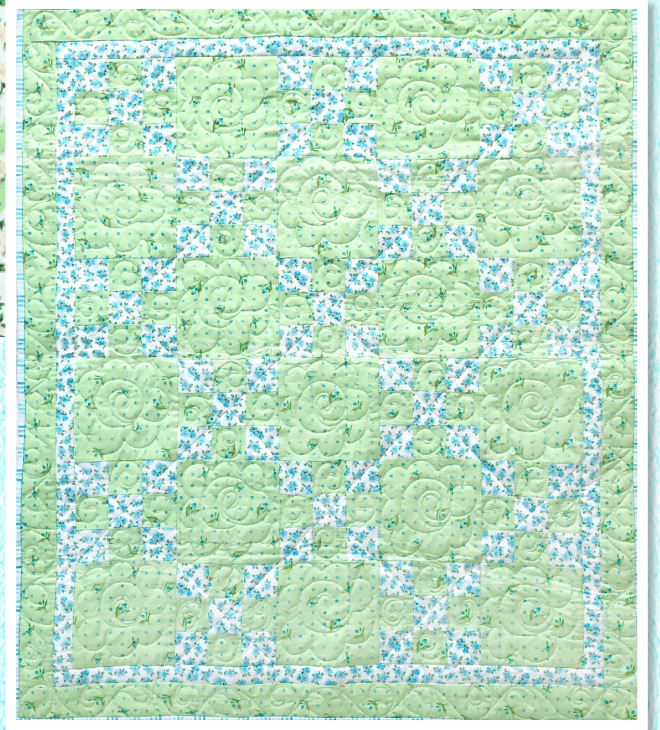
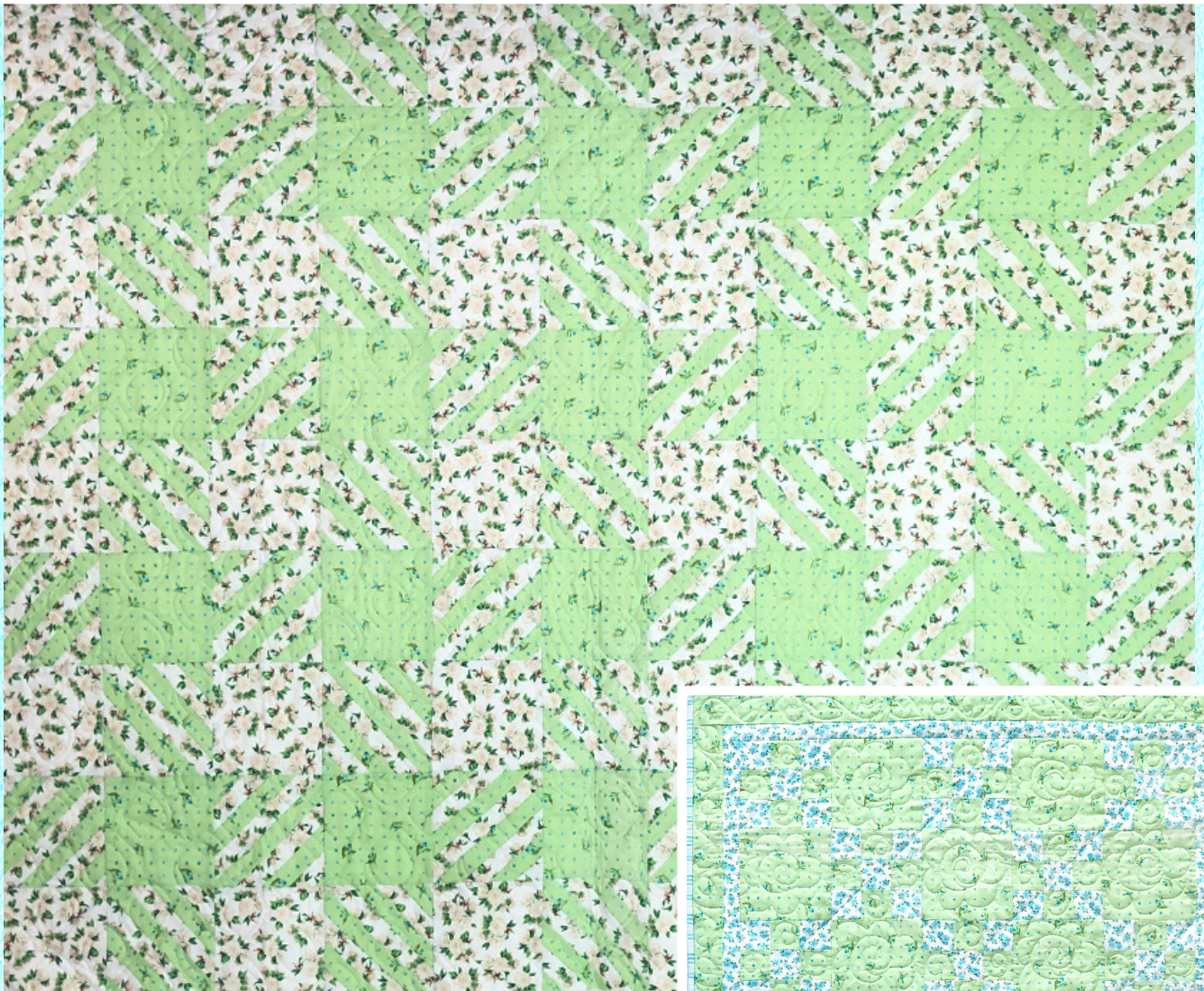




Quilt: Lumberjack, 54" x 66"

By: Stephanie Sheridan, Maker: Heidi Stock, Quilter: Stephanie Atwood

FREE PATTERN: [WINDHAMFABRICS.COM](http://WINDHAMFABRICS.COM)



Quilt: 9 Patch with Alternating Squares, 40" x 40"

Makers: Carrie Prince & Nancy Hugo

PATTERN NOT AVAILABLE, FOR CONCEPT ONLY





Quilt: *Folded Corners*, (enlarged) 64" x 64"

By: Wendy Russell, Maker: Jessie Woods

PATTERN FOR SALE: [PATCHWORKSQUARE.COM](http://PATCHWORKSQUARE.COM)



Dress: *Hattie*

Maker: Alison J. O'Grady of Sew Bee It Clothier

PATTERN FOR SALE: [VIOLETTEFIELDTHREADS.COM](http://VIOLETTEFIELDTHREADS.COM)

*laura ann*



Quilt: I Heart You, 55" x 61"

Makers: Nancy Hugo and Carrie Prince

PATTERN FOR SALE: [THENCAMEJUNE.COM](http://thencamejune.com) + [PENANDPAPERPATTERNS.BLOGSPOT.COM](http://penandpaperpatterns.blogspot.com)





emmeline

Dress: #6850

Maker: Merin Benson

FROM SIMPLICITY NEW LOOK KIDS



Quilt: Plant a Garden (chenille-it), 36" x 52"  
Raw Edge Raised Texture Appliqué with Chenille-It  
Makers: Nanette Holmberg  
PATTERN FOR SALE: [WWW.FAUXCHENILLE.COM](http://WWW.FAUXCHENILLE.COM)

# LOVE LETTERS *by Shannon Christensen*



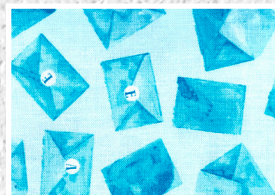
51413 -X Multi



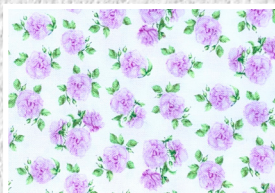
51419 -2 Lilac



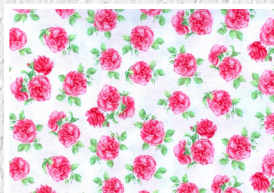
51419 -1 Rose



51419 -3 Morning Glory



51416 -2 Lilac



51416 -1 Rose



51416 -3 Morning Glory



51414 -2 Lilac



51414 -1 Rose



51414 -3 Morning Glory



51415 -5 White



51415 -1 Rose



51415 -4 Aqua



51418 -5 White



51418 -1 Rose



51418 -3 Morning Glory



51417 -6 Apple



51417 -2 Lilac



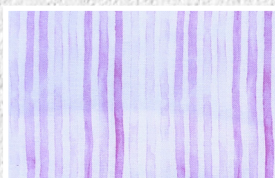
51417 -1 Rose



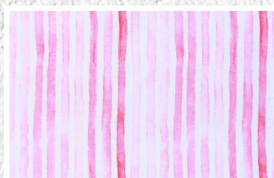
51417 -3 Morning Glory



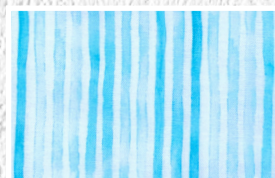
51420 -6 Apple



51420 -2 Lilac



51420 -1 Rose



51420 -3 Morning Glory



24 SKUS



*Shannon Christensen's*

# LOVE LETTERS

*Thank you again to the Windham Fabrics Family -  
Mickey, Laura, Alex, Sandy, Kait, Nicah, Robin, Lisa, Carmen and  
to the many others who make fabric magic happen!*

*Thank you to the Makers -  
Some listed in this book and to the many others who will buy  
Love Letters and make something amazing with it.*

*Thank you always to my growing family -  
Allen, Leila & Sky, Joseph, Cassandra, Samantha & Jared, Wade,  
Reece, Jessie & Barry, Logan & Erica, Alisha & Nathanael!*



CONNECT WITH SHANNON: SHANNONSTUDIO.COM • IG @SHANNONSSTUDIO • SHANNONSSTUDIO@GMAIL.COM

SHOP FABRICS: WINDAMFABRICS.COM • 201.659.0444 • 866.842.7631 • INFO@WINDHAMFABRICS.COM