



**KAFFE  
FASSETT  
COLLECTIVE**  
for

*Free Spirit*

Delivering August 2020  
64 Skus





Amaryllis PWPJ104.GREEN

Inset shown at full width.

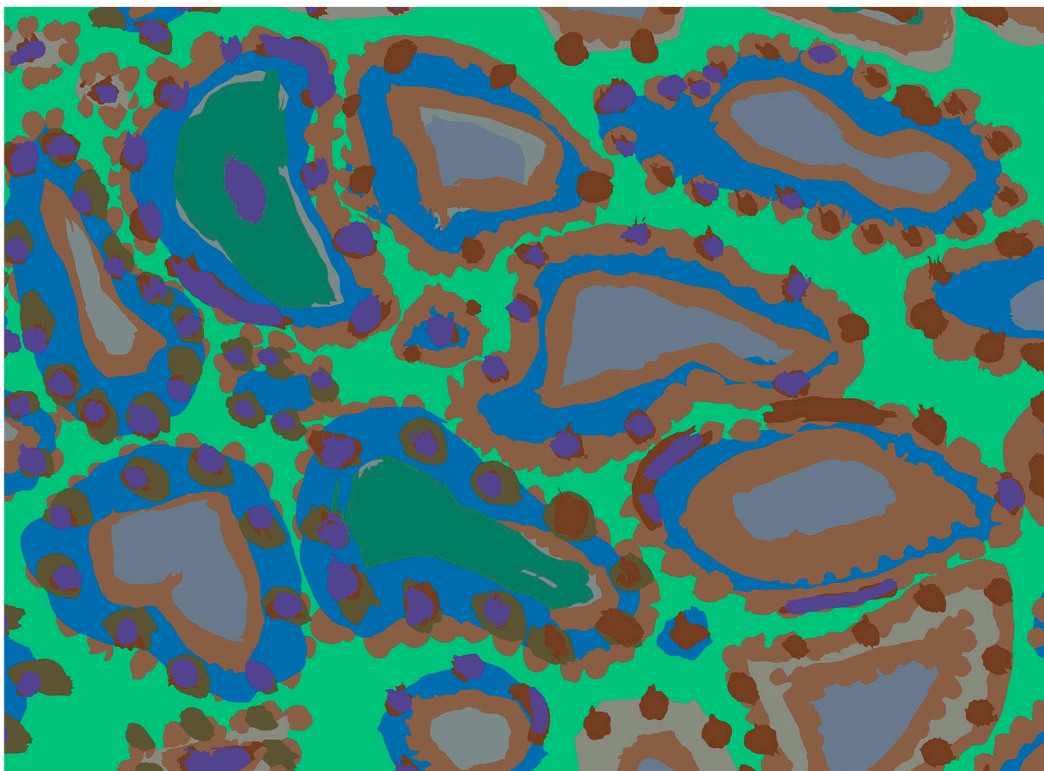
Repeat: 28"W x 24"H



Wisteria PWPJ102.TEAL

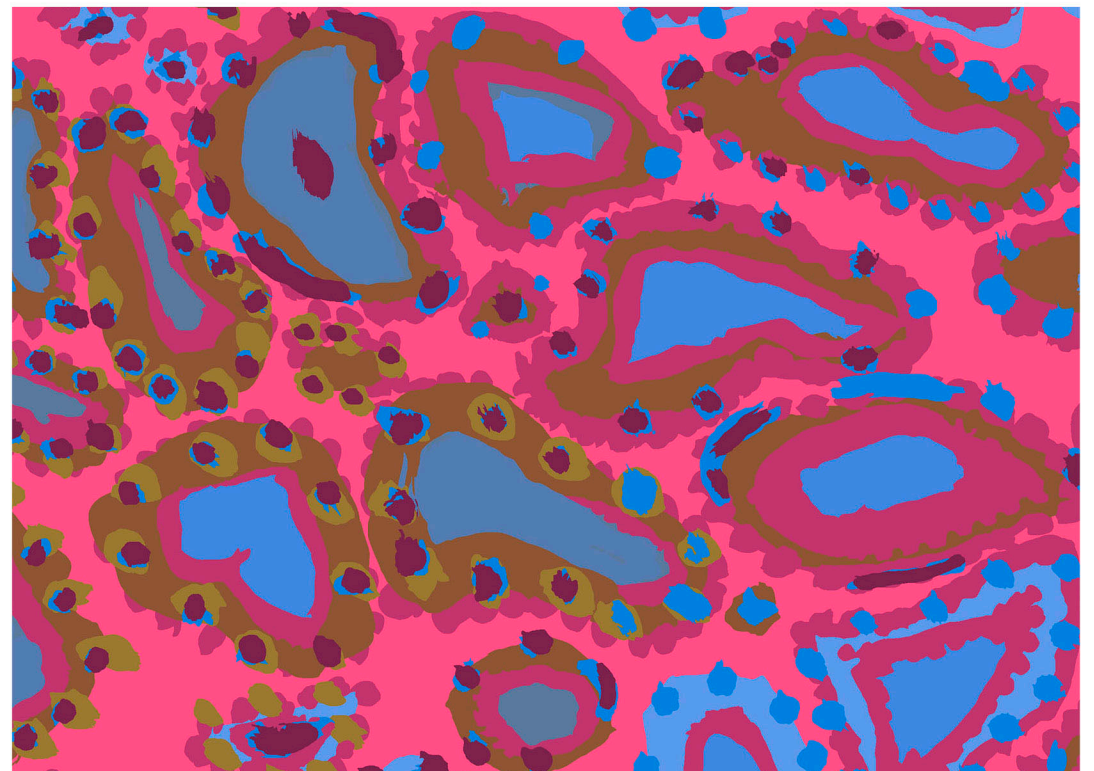
Inset shown at full width.

Repeat: 42"W x 24"H



Animal PWBM076.SAGE

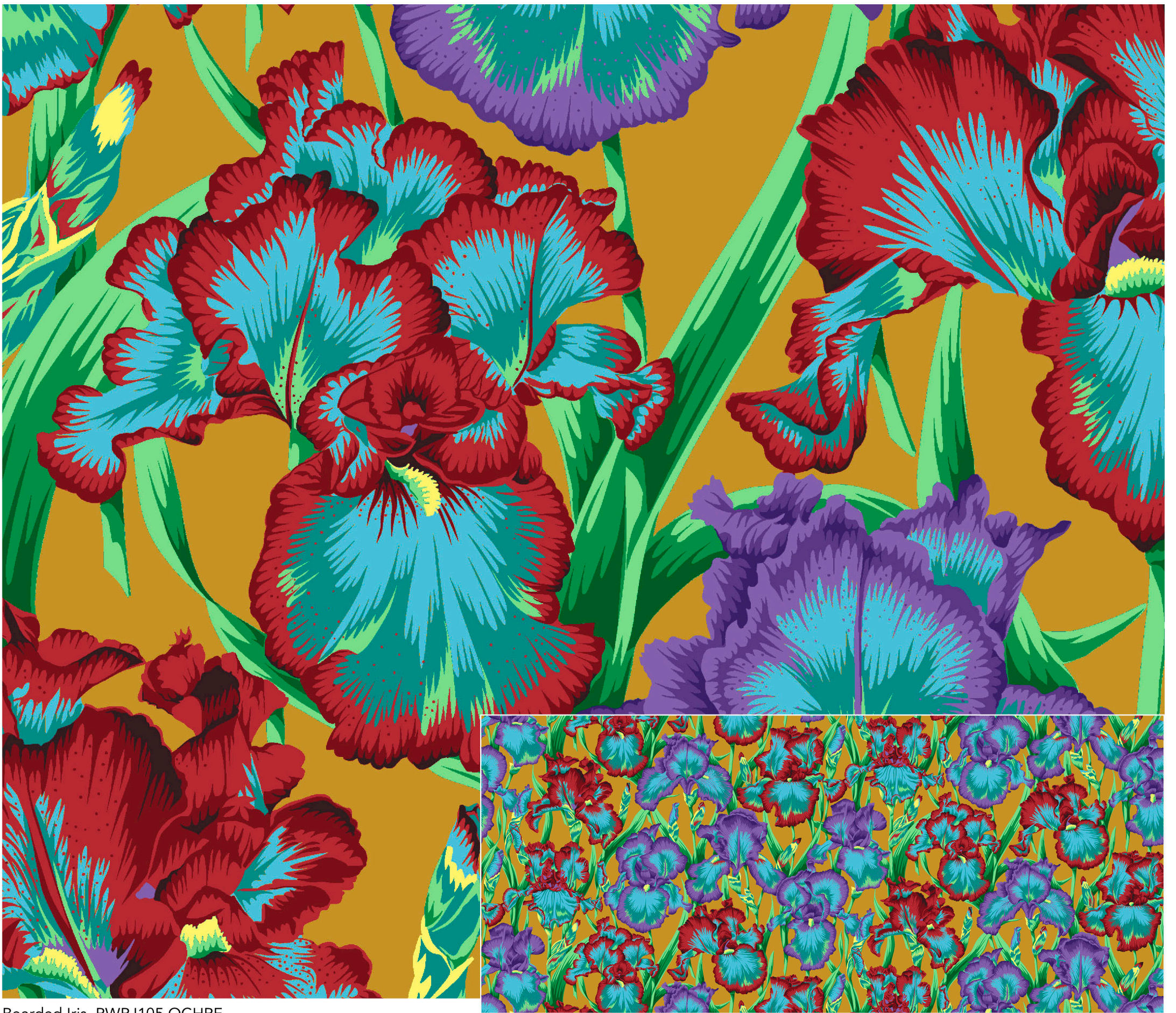
Repeat: 16"W x 12.5"H



Animal PWBM076.PINK

Repeat: 16"W x 12.5"H





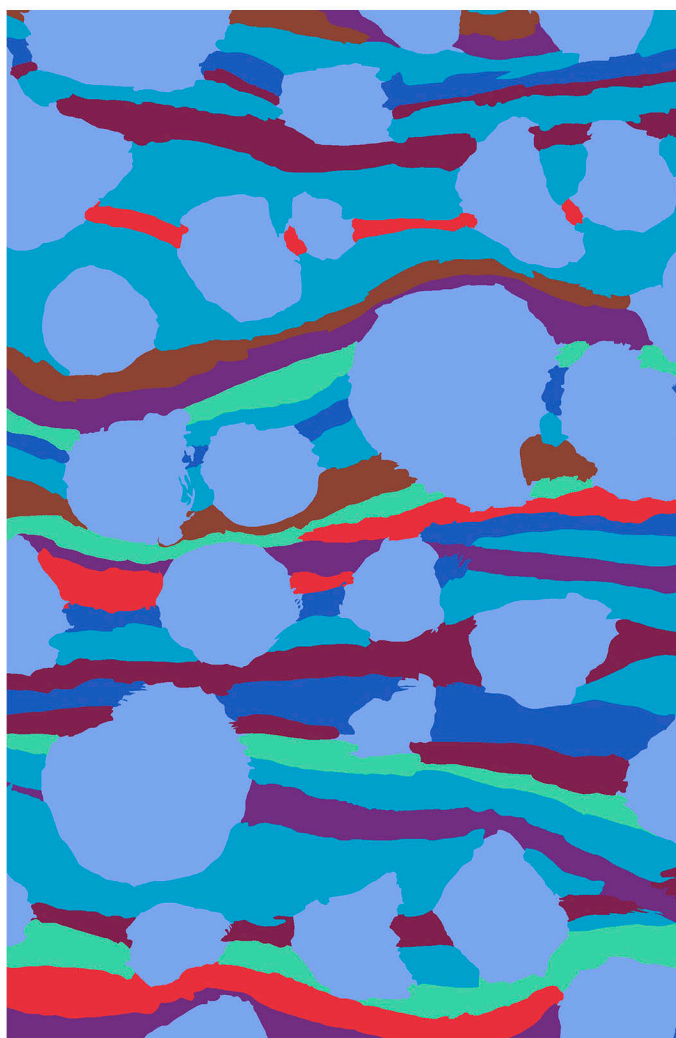
Bearded Iris PWPJ105.OCHRE

Inset shown at full width.

Repeat: Full Width x 16"H



Stream PWBM075.BLACK Repeat: 12.5"W x 12.5"H

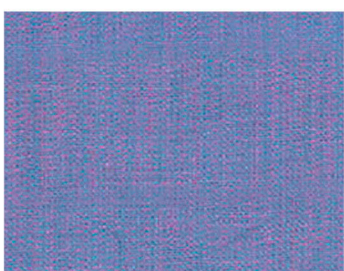


Stream PWBM075.BLUE Repeat: 12.5"W x 12.5"H



Stream PWBM075.GREEN Repeat: 12.5"W x 12.5"H

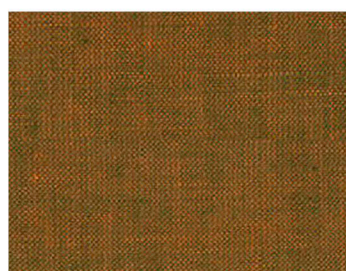
### HARMONIZING FABRICS



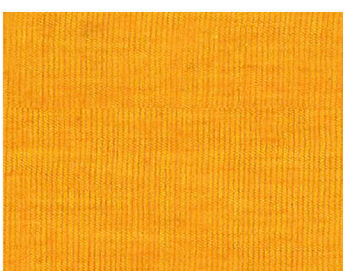
SCGP114.OPAL



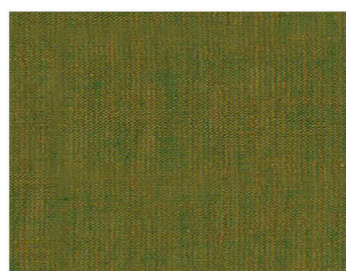
SCGP103.WINE



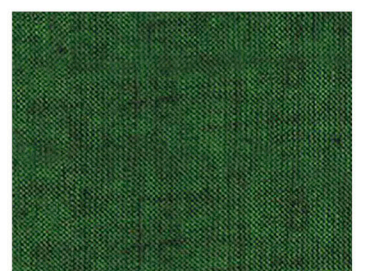
SCGP115.HARISSA



SCGP112.SUNFLOWER



SCGP107.KHAKI



SCGP120.PINE

This presentation is a fair representation of design, scale and color of each fabric. The final fabrics will have very minimal changes.



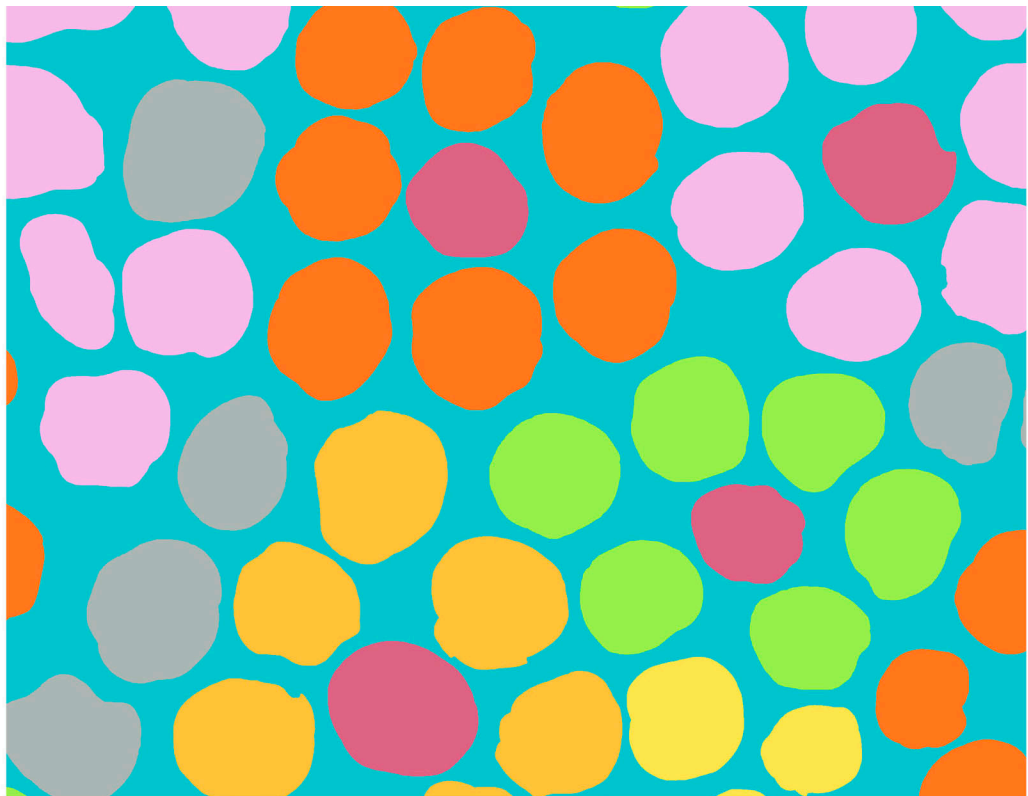


Watermelons PWPJ103.GREEN



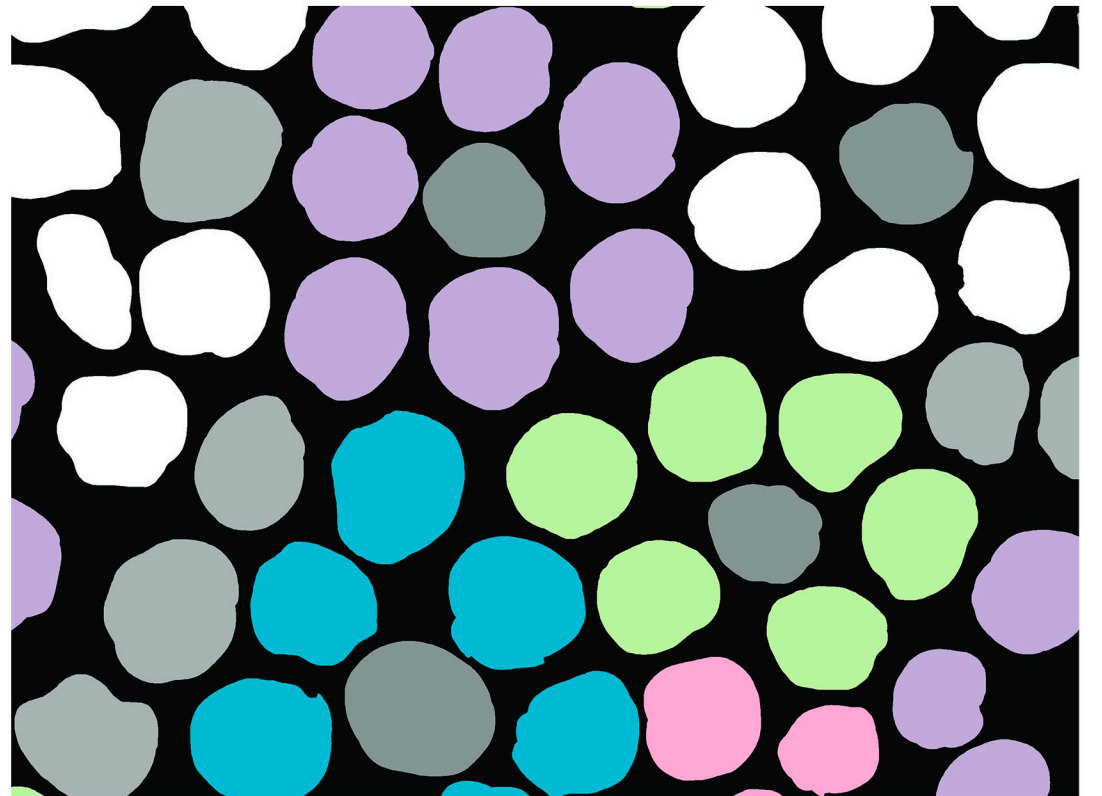
Inset shown at full width.

Repeat: Full Width x 12"H



Flower Dot PWBM077.AQUA

Repeat: 12.5"W x 12.5"H



Flower Dot PWBM077.STONE

Repeat: 12.5"W x 12.5"H



Amaryllis PWPJ104.NATURAL



Inset shown at full width.

Repeat: 28"W x 24"H

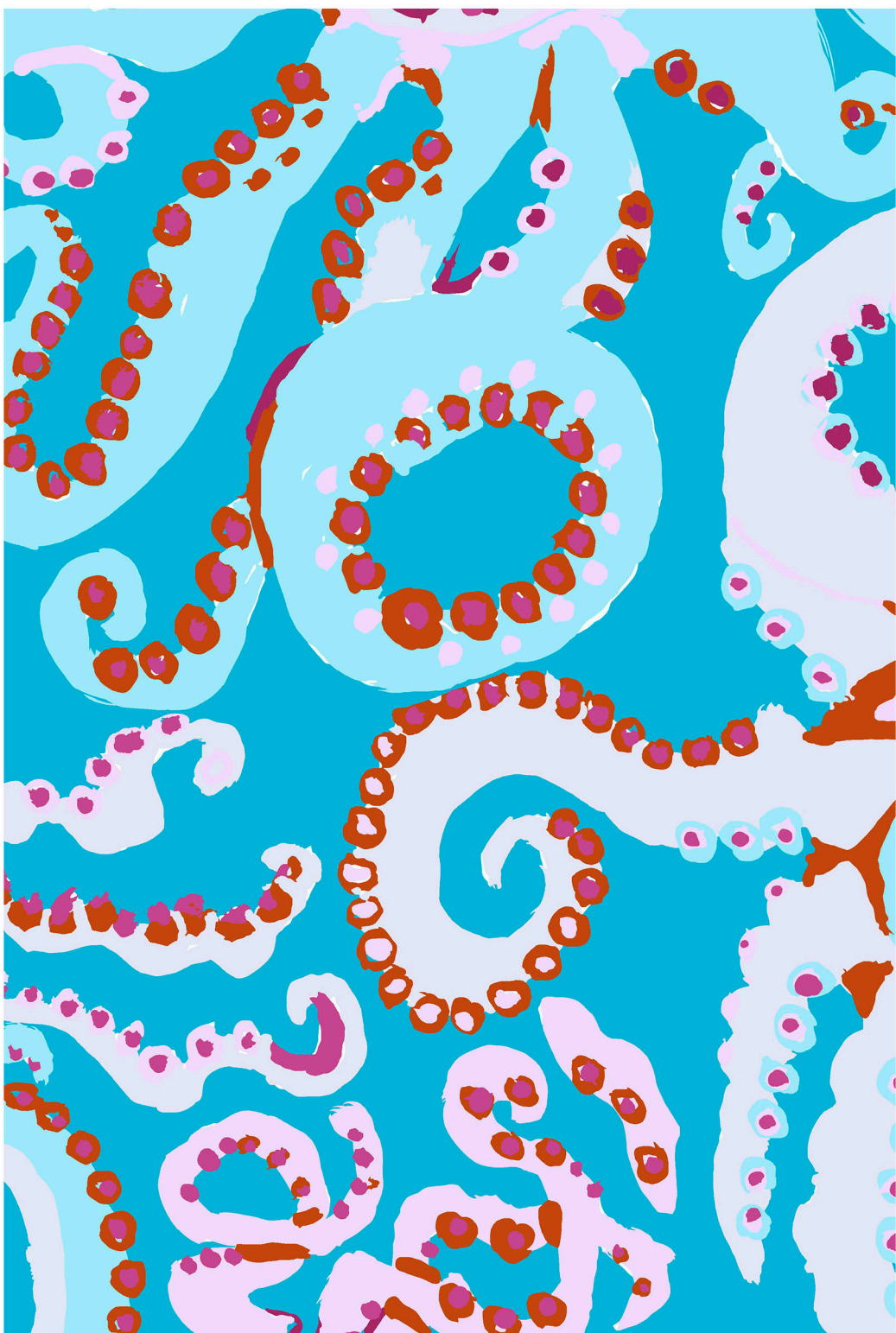




Bearded Iris PWPJ105.COOL

Inset shown at full width.

Repeat: Full Width x 16"H



Octopus PWBM074.TURQUOISE

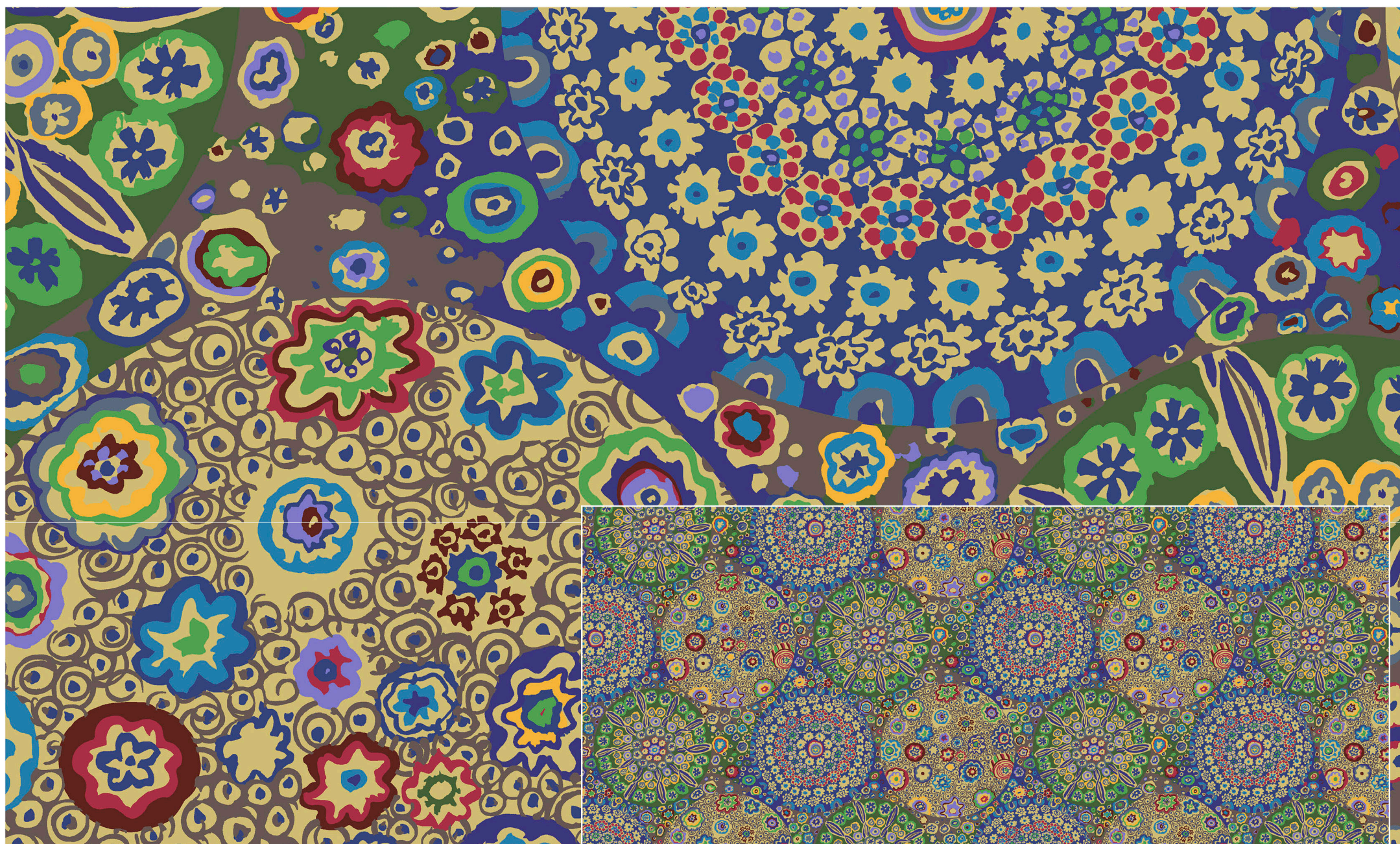
Repeat: 16"W x 16"H



Octopus PWBM074.BLACK

Repeat: 16"W x 16"H

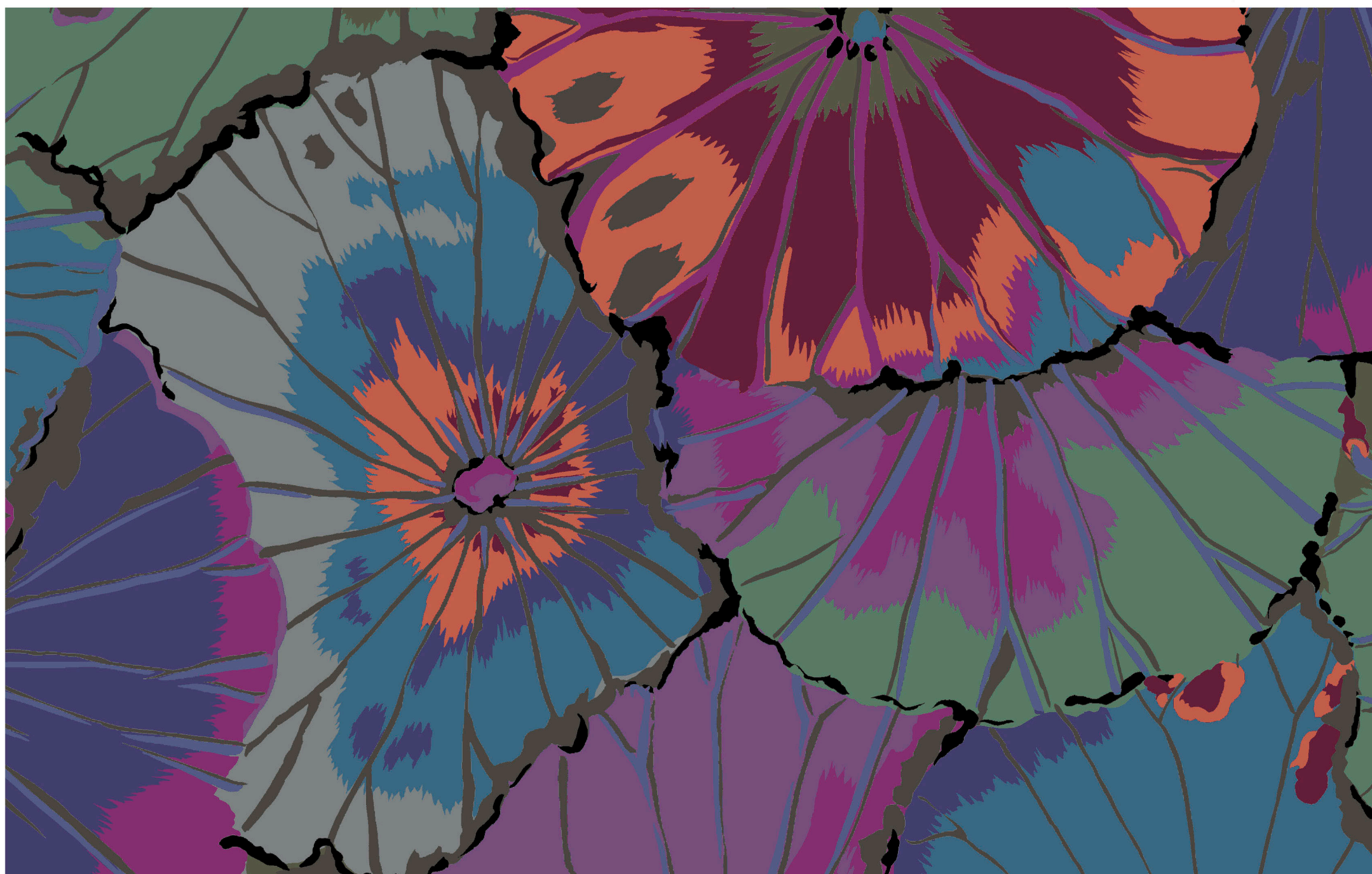




Millefiore PWGP092.OCHRE

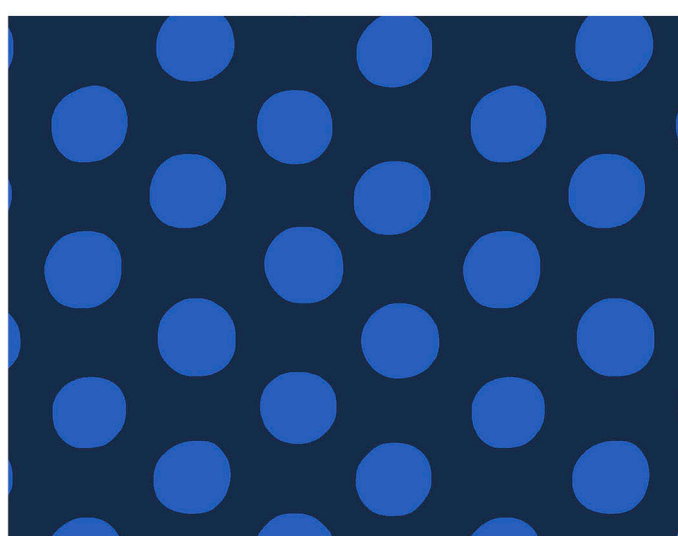
Inset shown at full width.

Repeat: 24"W x 12"H

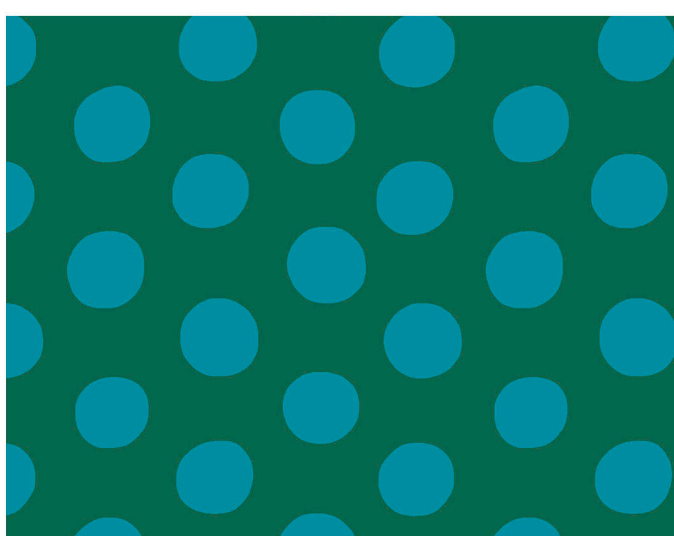


Lotus Leaf PWGP029.VINTAGE

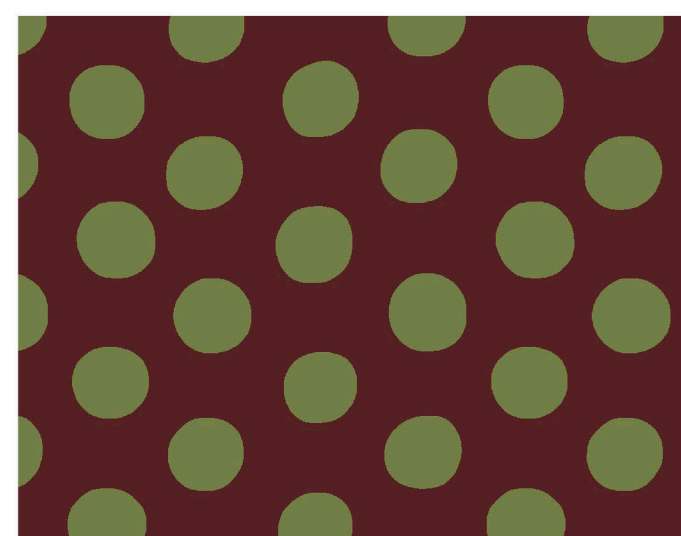
Repeat: 24"W x 12"H



Spot PWGP070.INDIGO



Spot PWGP070.PACIFIC



Spot PWGP070.BURGUNDY





Bearded Iris PWPJ105.DARK

Inset shown at full width.

Repeat: Full Width x 16"H



Agate PWPJ106.OCHRE

Inset shown at full width.

Repeat: 30"W x 24"H



Dancing Dahlias PWPJ101.DARK

Inset shown at full width.

Repeat: 28"W x 24"H

### HARMONIZING SHOT COTTONS



SCGP115.HARISSA



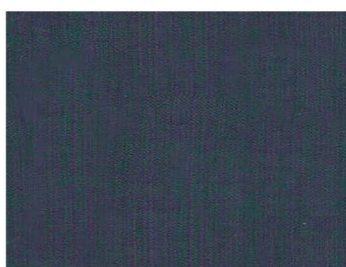
SCGP110.BLOODORANGE



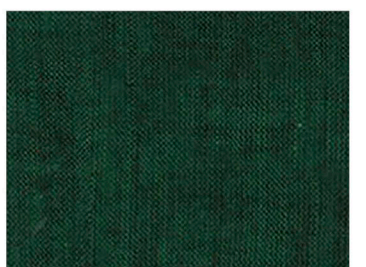
SCGP119.PLUM



SCGP117.AUBERGINE



SCGP108.SHADOW



SCGP118.PESTO

This presentation is a fair representation of design, scale and color of each fabric. The final fabrics will have very minimal changes.



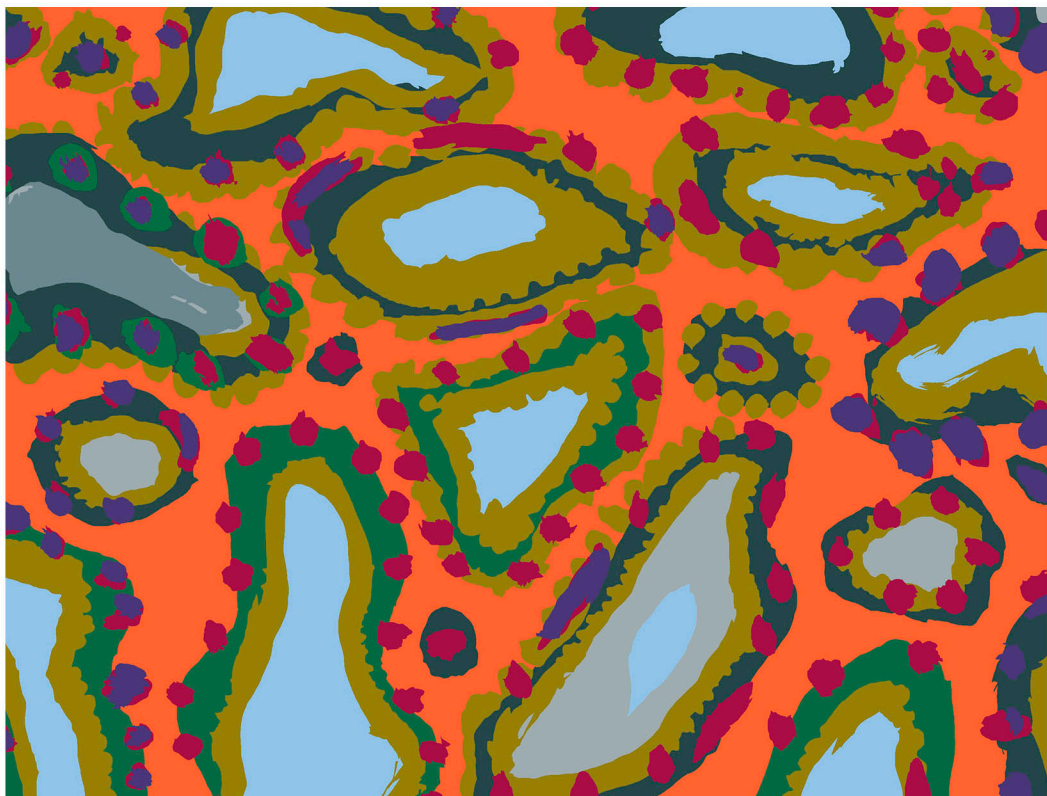


Watermelons PWPJ103.GREY



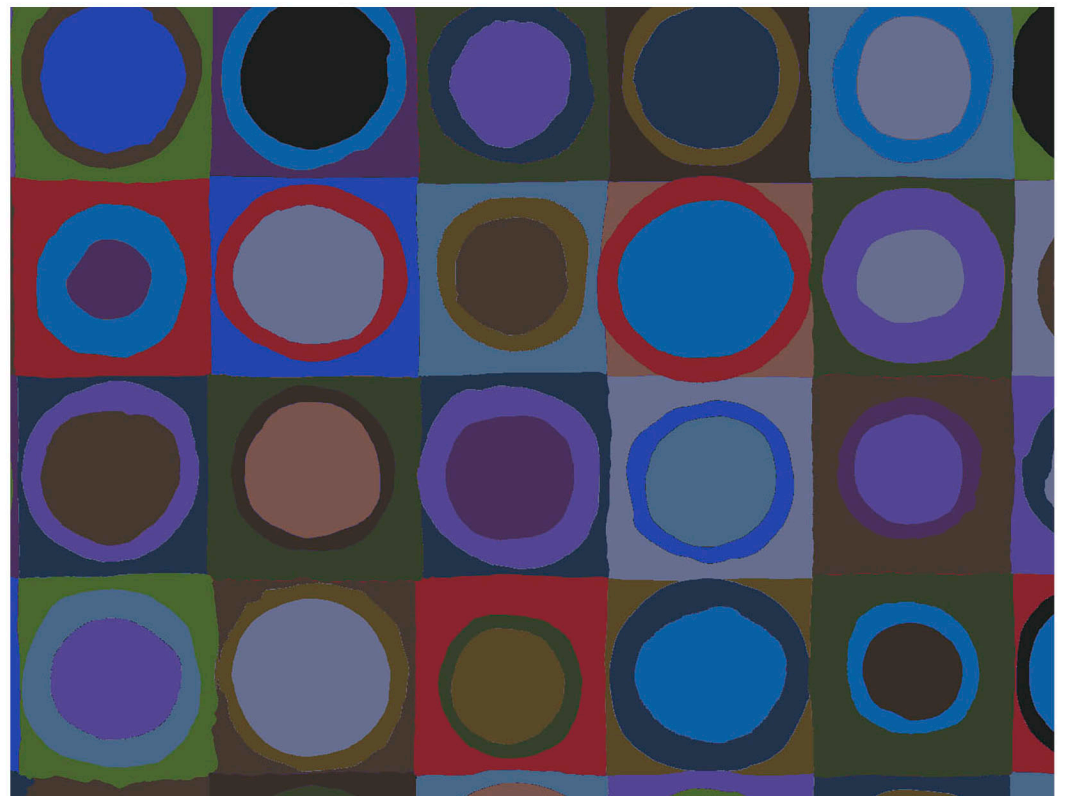
Inset shown at full width.

Repeat: Full Width x 12"H



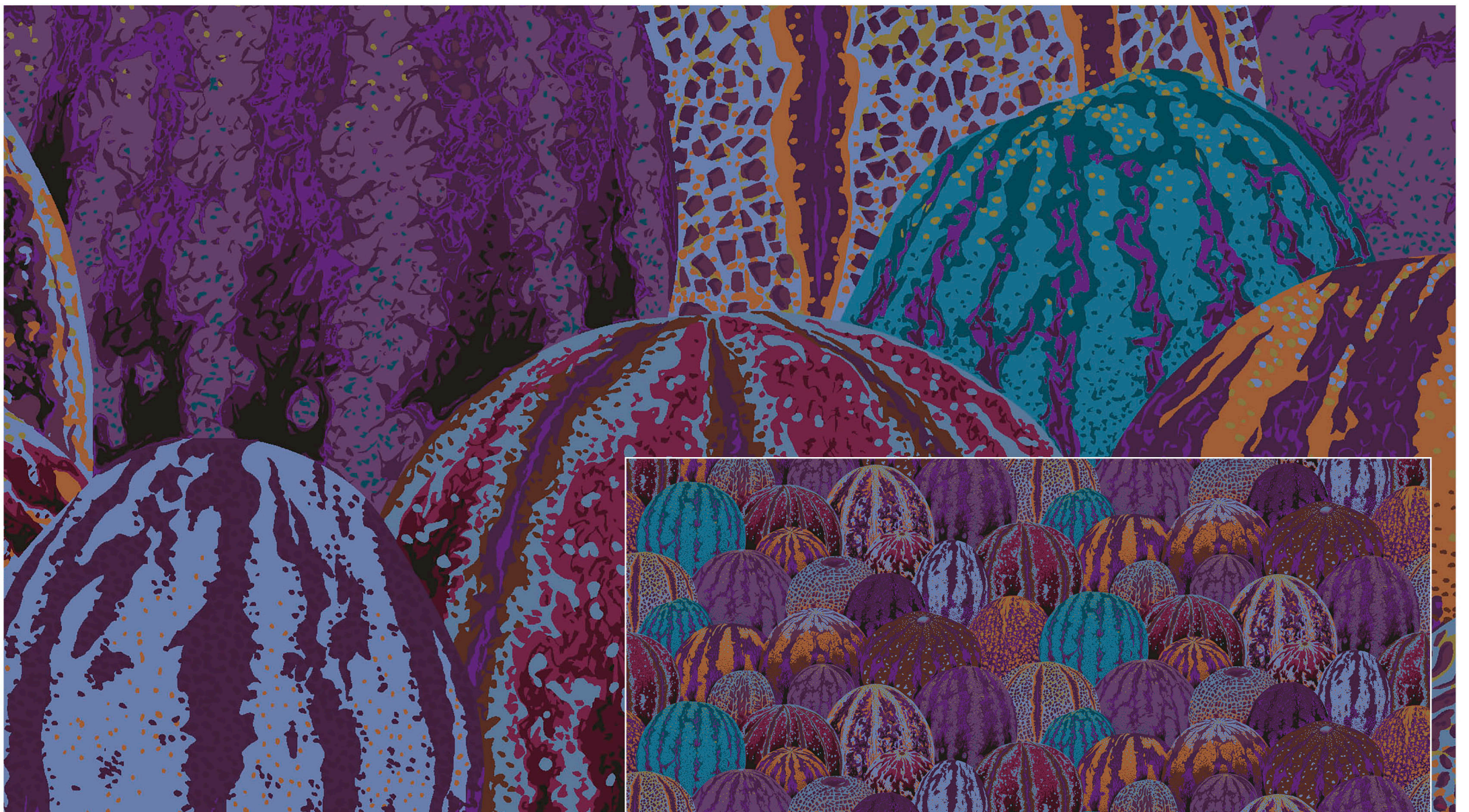
Animal PWBM076.ORANGE

Repeat: 12.5"W x 12.5"H



Tiddlywinks PWGP171.DARK

Repeat: 12.5"W x 12.5"H



Watermelons PWPJ103.EARTH



Inset shown at full width.

Repeat: Full Width x 12"H



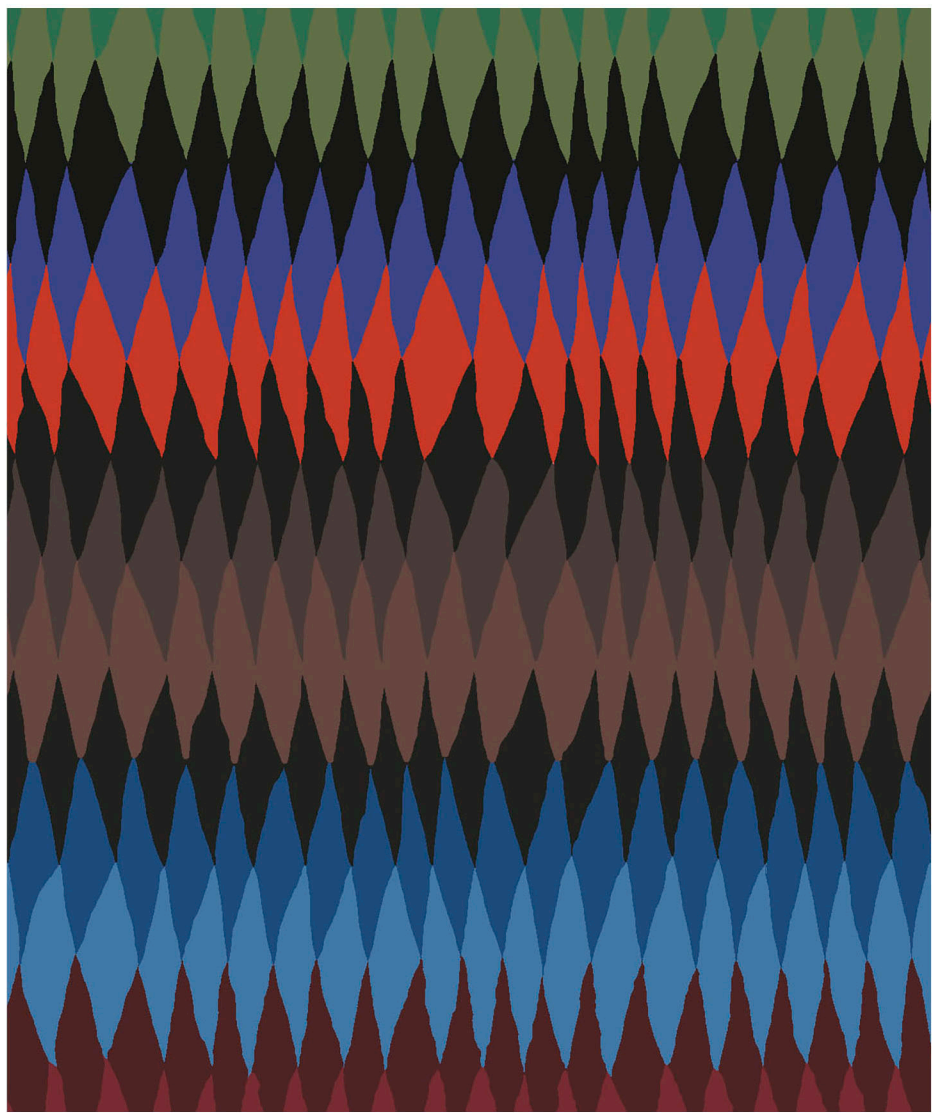


Enchanted PWGP172.COBALT



Inset shown at full width.

Repeat: 32"W x 16"H



Diamond Stripe PWGP170.BURNT

Repeat: 12.5"W x 12.5"H

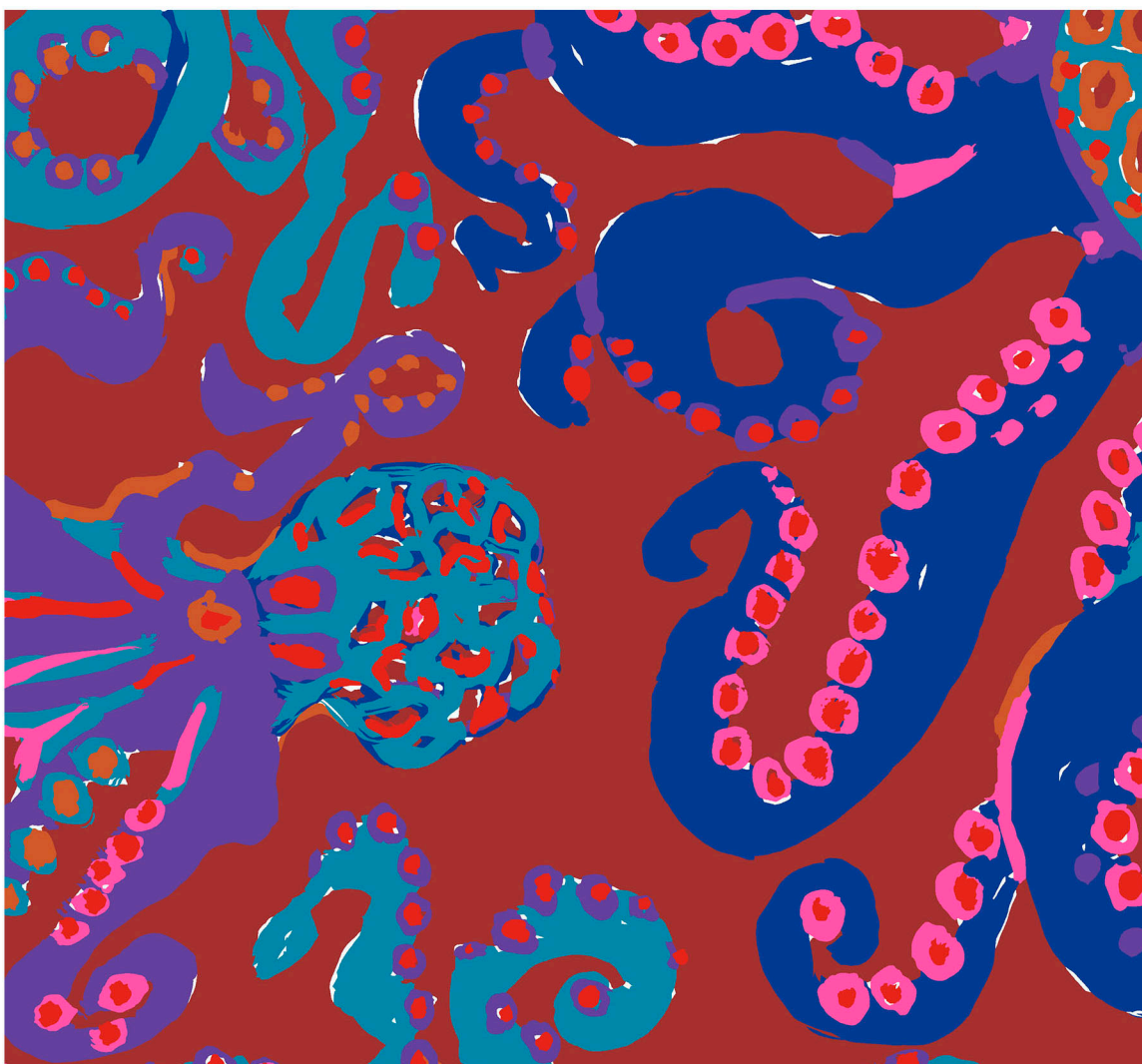


Millefiore PWGP092.DUSTY



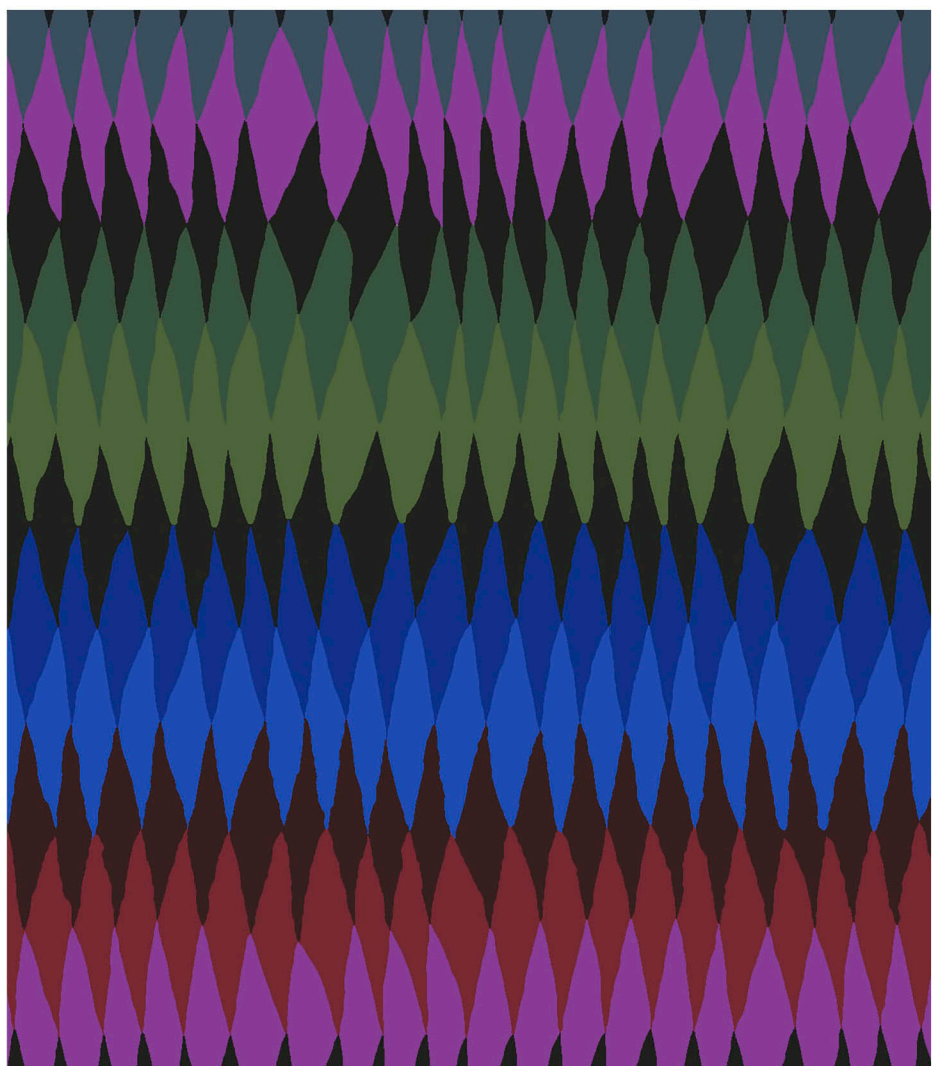
Inset shown at full width.

Repeat: 24"W x 12"H



Octopus PWBM074.RED

Repeat: 16"W x 16"H



Diamond Stripe PWGP170.MOODY

Repeat: 12.5"W x 12.5"H

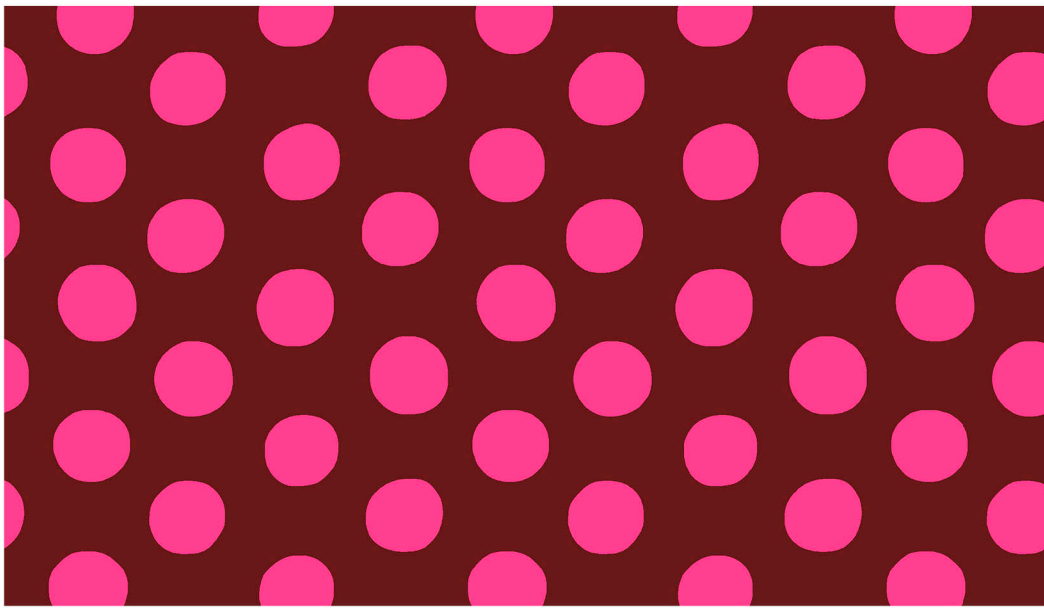




Enchanted PWGP172.RUST

Inset shown at full width.

Repeat: 32"W x 16"H



Spot PWGP070.MERLOT



Tiddlywinks PWGP171.RUST

Repeat: 12.5"W x 12.5"H

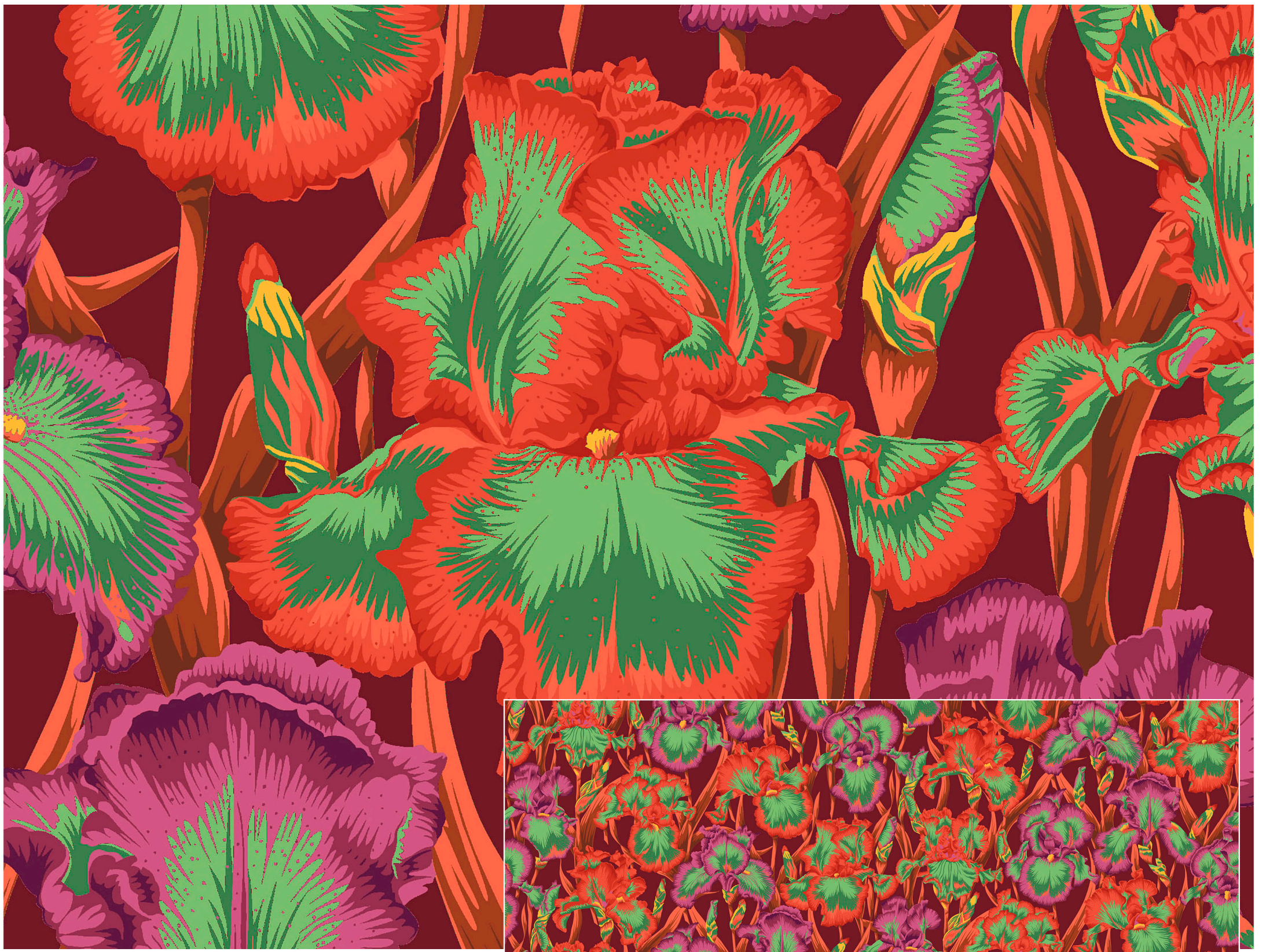


Wisteria PWPJ102.RED

Inset shown at full width.

Repeat: 42"W x 24"H





Bearded Iris PWPJ105.RED

Inset shown at full width.

Repeat: Full Width x 16"H



Dancing Dahlias PWPJ101.MULTI

Inset shown at full width.

Repeat: 28"W x 24"H

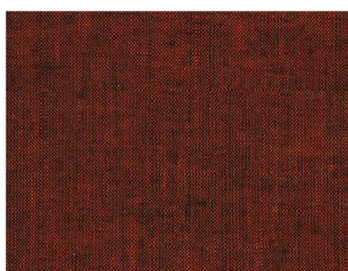


Dancing Dahlias PWPJ101.RED

Inset shown at full width.

Repeat: 28"W x 24"H

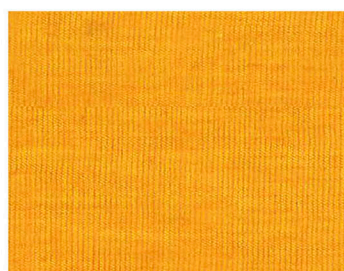
### HARMONIZING SHOT COTTONS



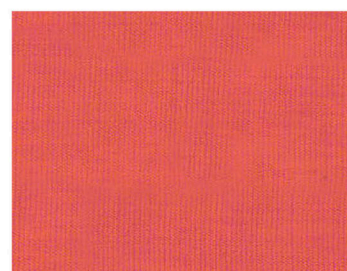
SCGP116.PIMENTO



SCGP101.PAPRIKA



SCGP112.SUNFLOWER



SCGP109.CAMELIA



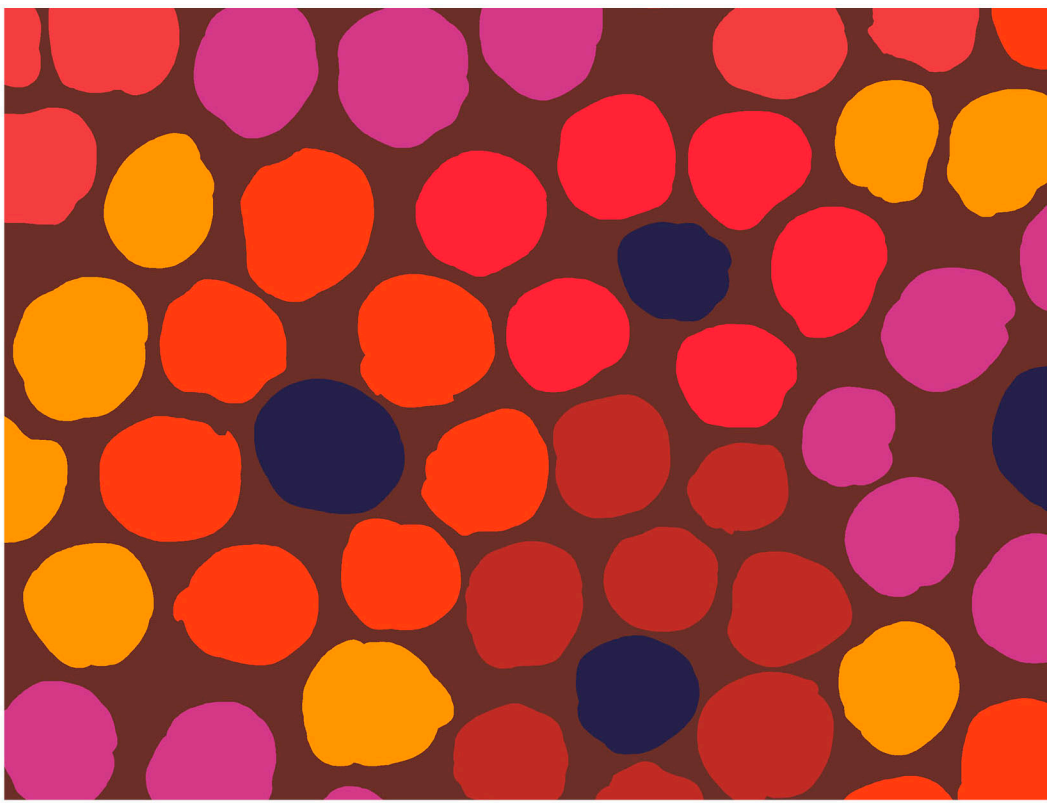
SCGP103.WINE



SCGP113.LUPIN

This presentation is a fair representation of design, scale and color of each fabric. The final fabrics will have very minimal changes.





Flower Dot PWBM077.WARM

Repeat: 12.5"W x 12.5"H



Stream PWBM075.ORANGE

Repeat: 12.5"W x 12.5"H



Agate PWPJ106.PINK

Inset shown at full width.

Repeat: 30"W x 24"H



Enchanted PWGP172.MAGENTA

Inset shown at full width. Repeat: 32"W x 16"H



Octopus PWBM074.ORANGE

Repeat: 16"W x 16"H





Wisteria PWPJ102.GREY

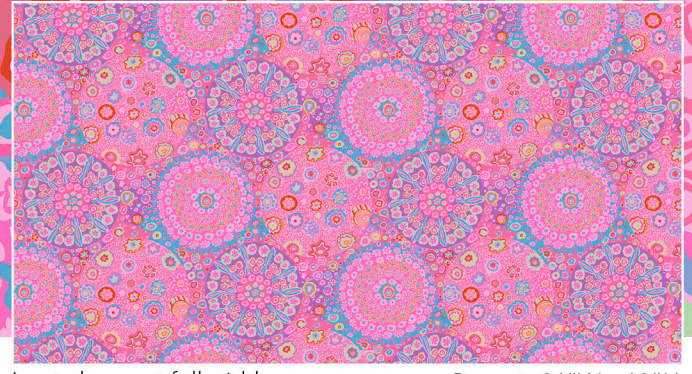


Inset shown at full width.

Repeat: 42"W x 24"H



Millefiore PWGP092.MAUVE



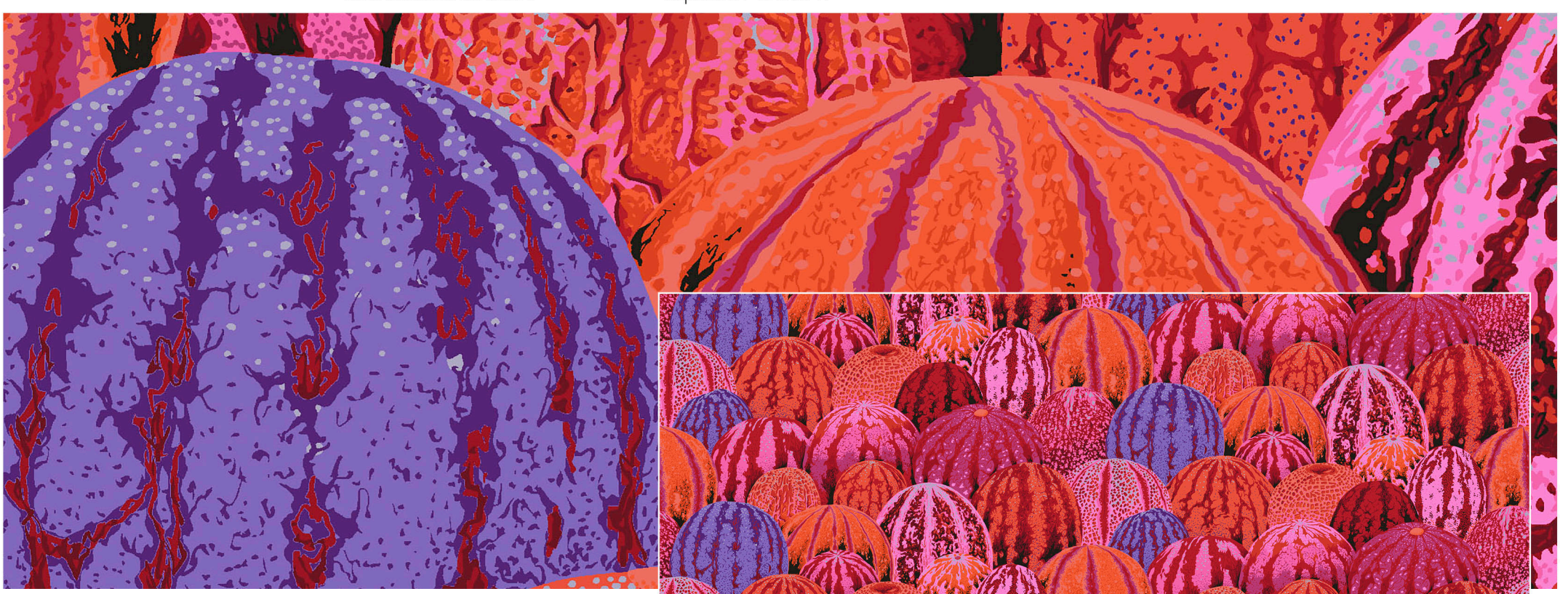
Inset shown at full width.

Repeat: 24"W x 12"H



Diamond Stripe PWGP170.PASTEL

Repeat: 12.5"W x 12.5"H



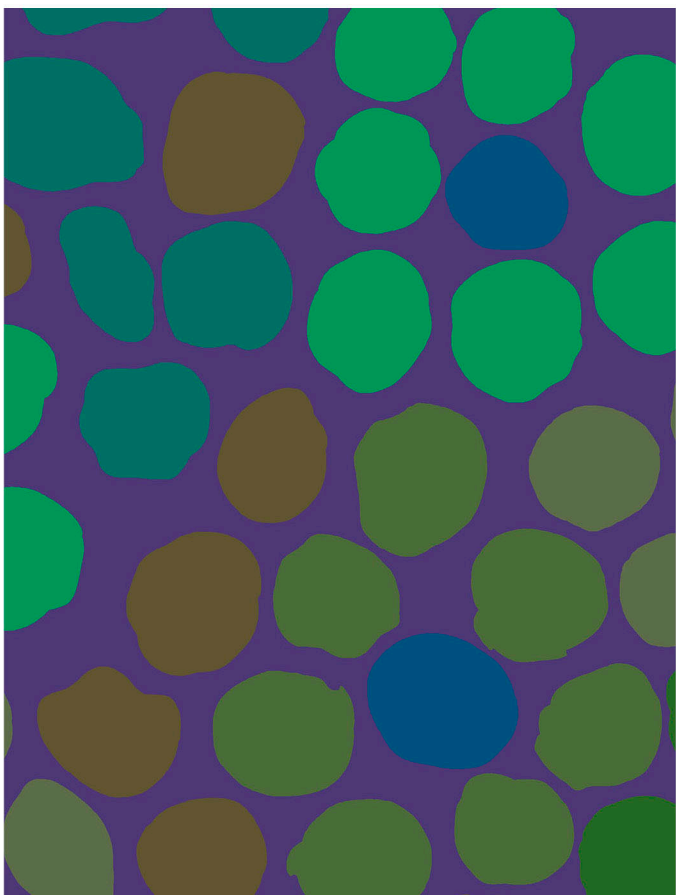
Watermelons PWPJ103.RED



Inset shown at full width.

Repeat: Full Width x 12"H

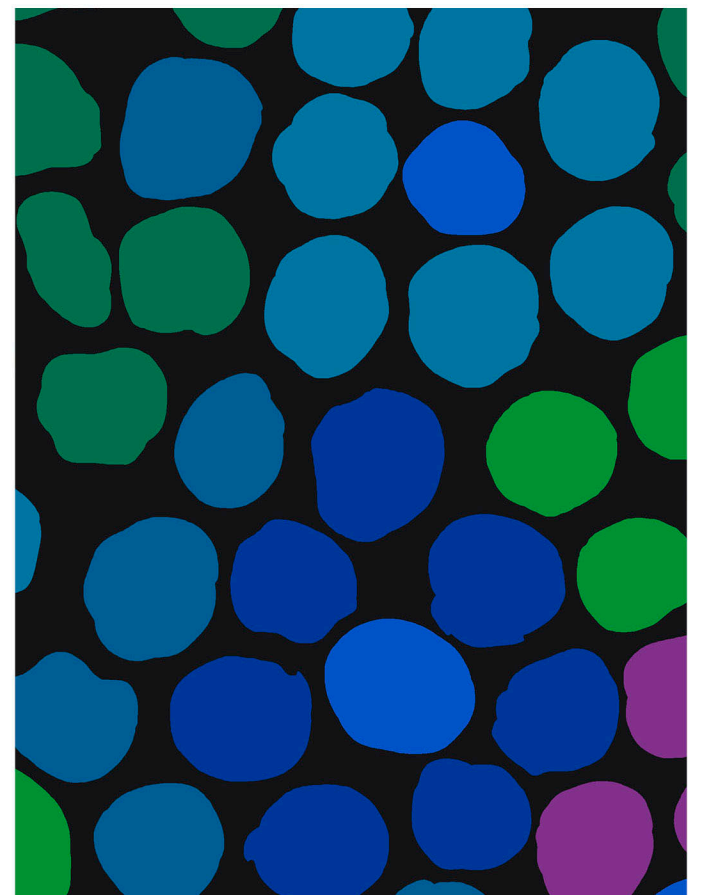




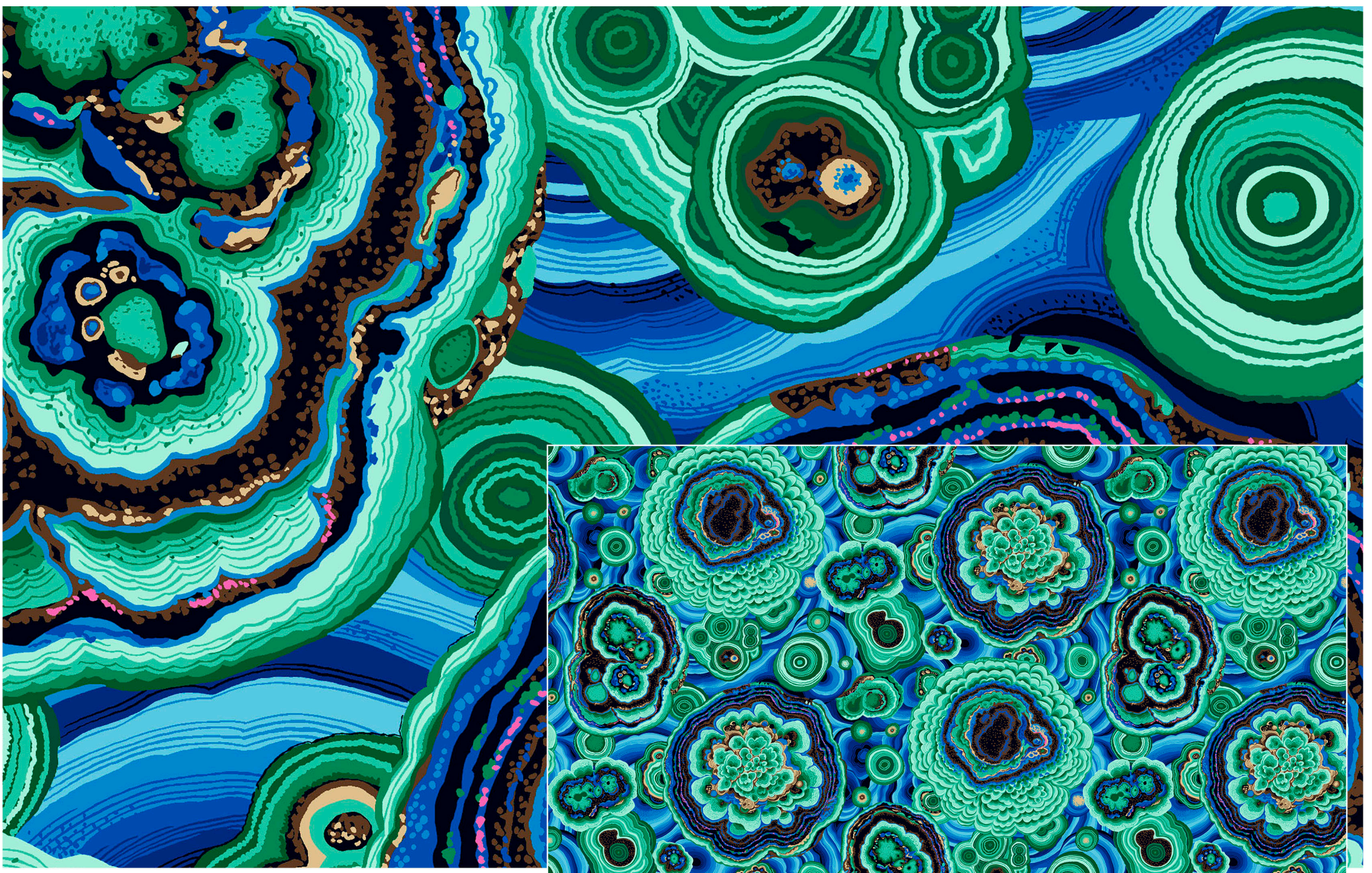
Flower Dot PWBM077.PURPLE



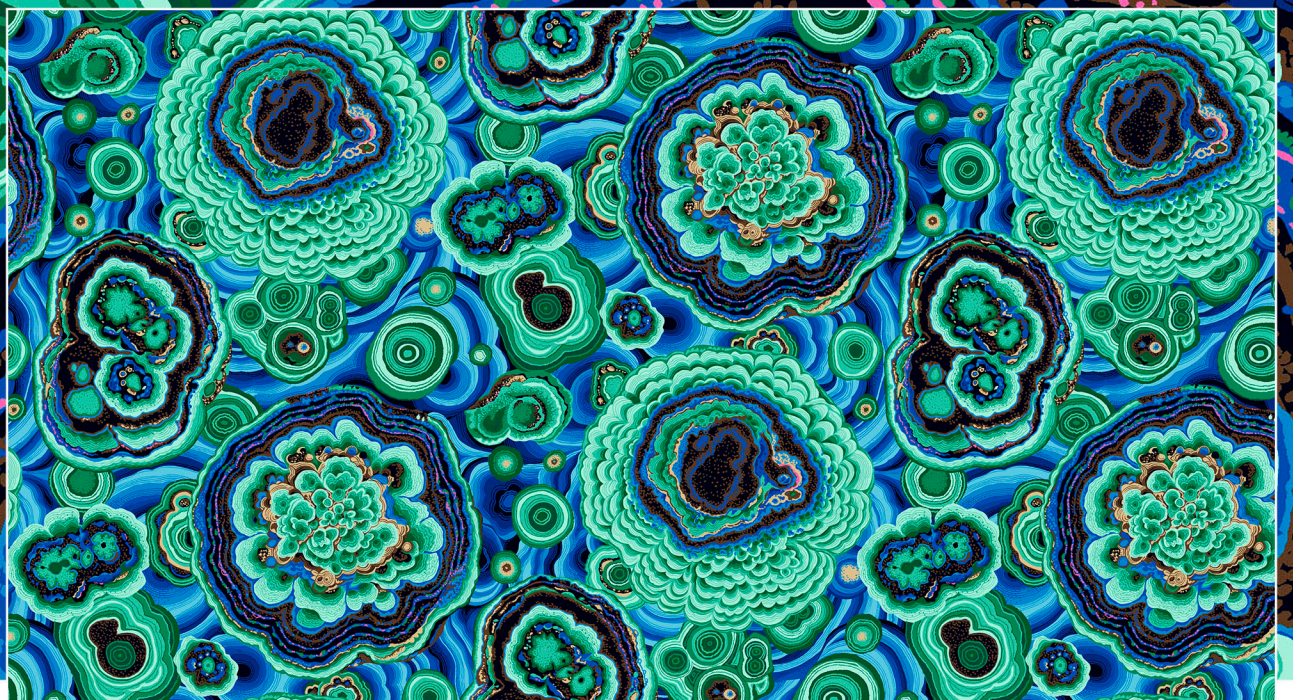
Stream PWBM075.MAGENTA



Flower Dot PWBM077.BLACK

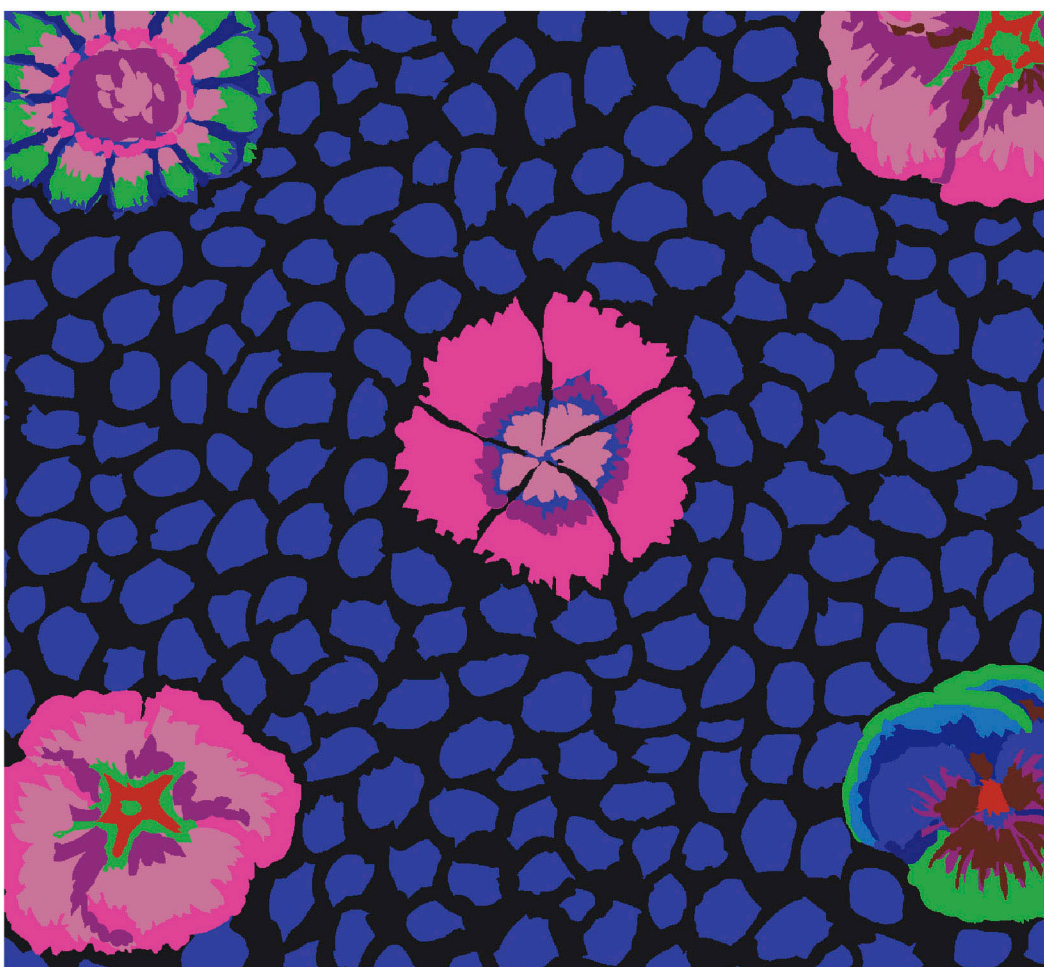


Agate PWPJ106.GREEN



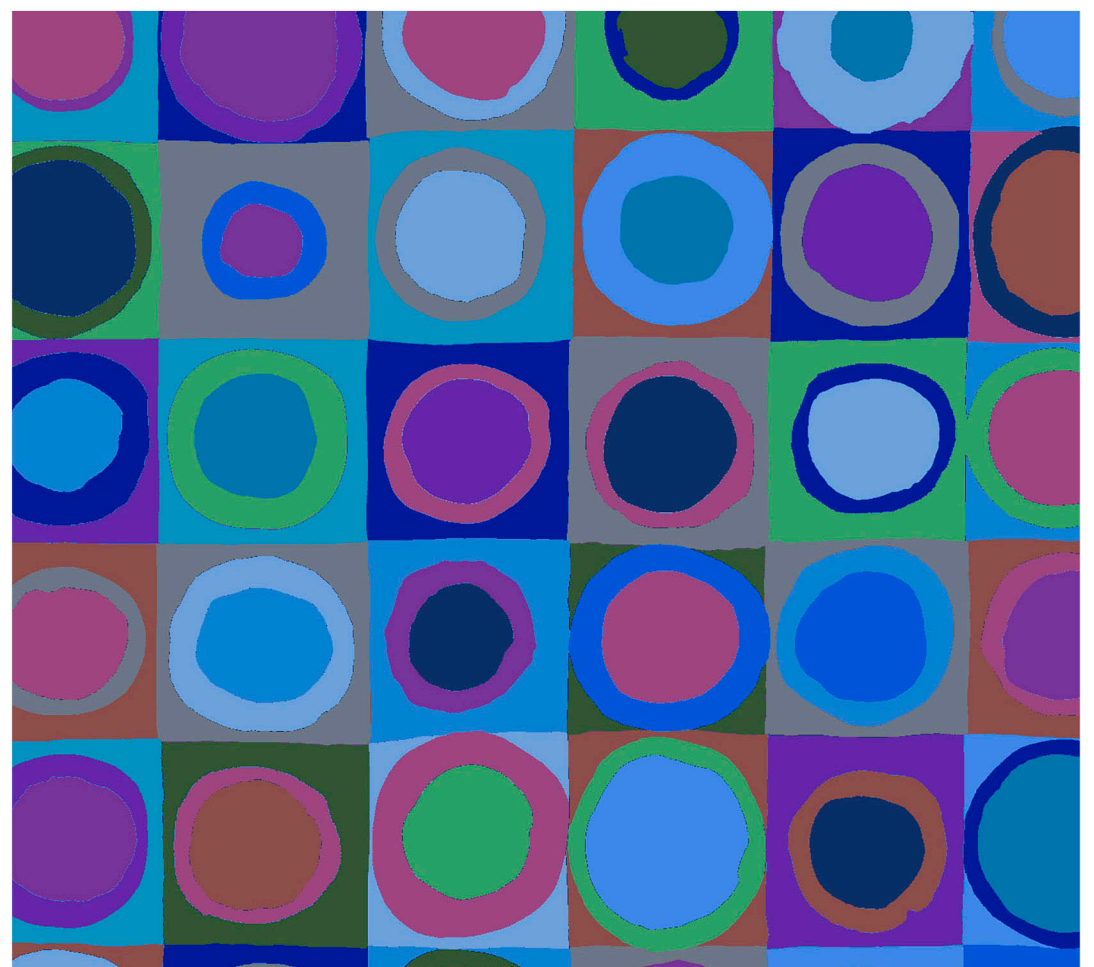
Inset shown at full width.

Repeat: 30"W x 24"H



Guinea Flower PWGP059.BLACK

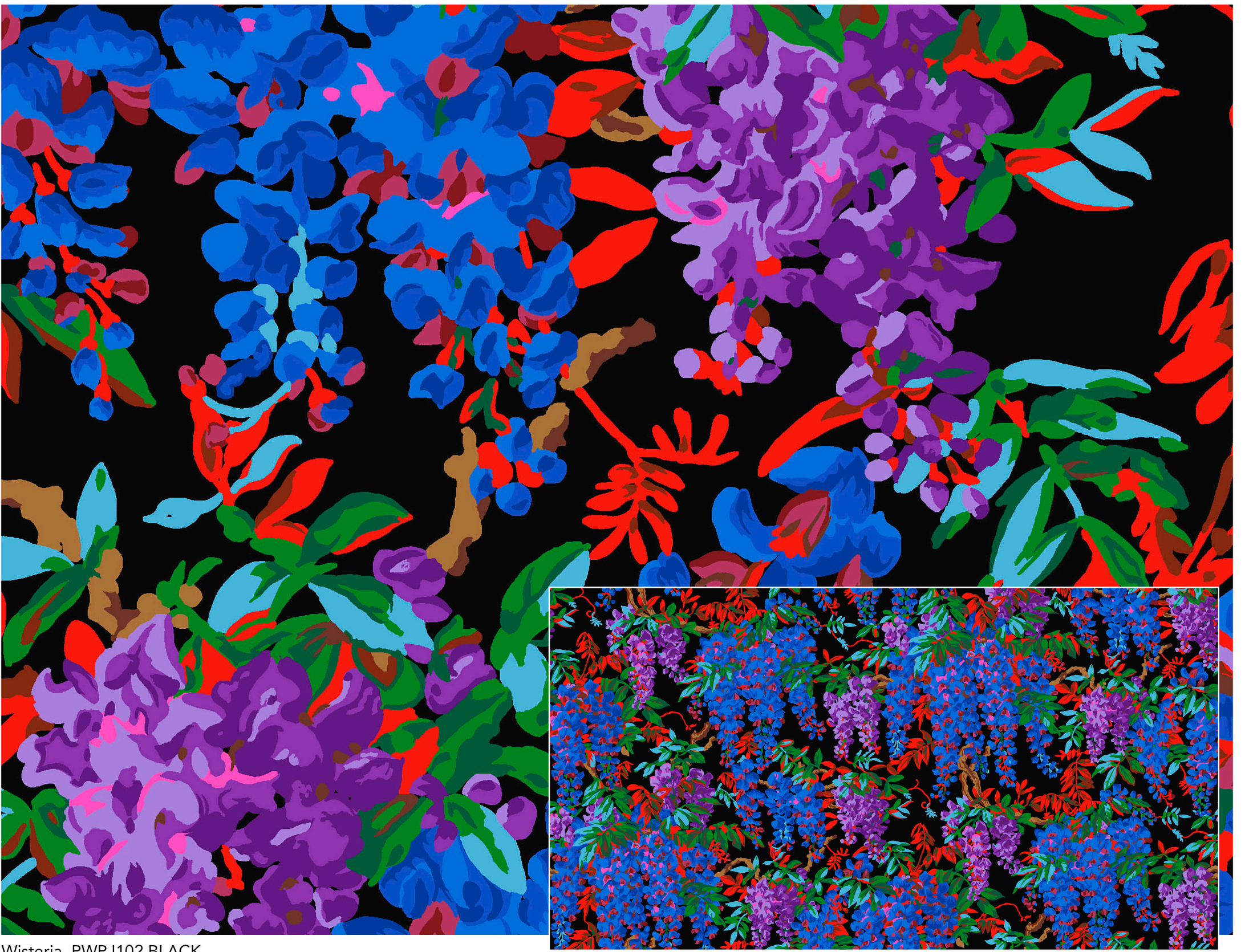
Repeat: 24"W x 12"H



Tiddlywinks PWGP171.COOL

Repeat: 24"W x 12"H





Wisteria PWPJ102.BLACK

Inset shown at full width.

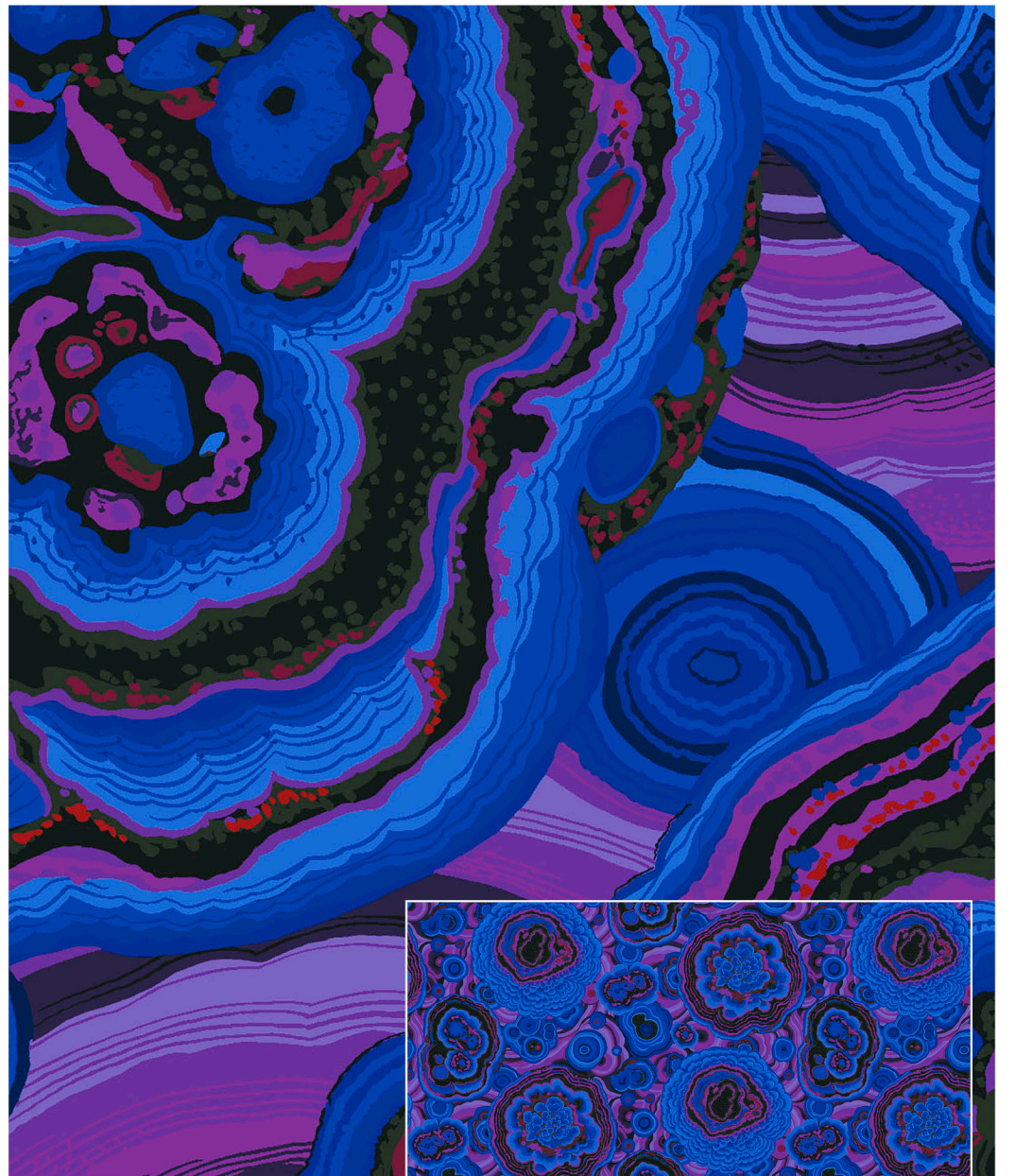
Repeat: 30"W x 24"H



Agate PWPJ106.RED

Inset shown at full width.

Repeat: 30"W x 24"H



Agate PWPJ106.BLUE

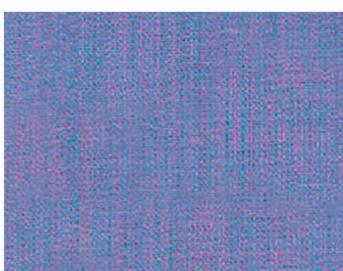
Inset shown at full width.

Repeat: 30"W x 24"H

**HARMONIZING SHOT COTTONS**



SCGP113.LUPIN



SCGP114.OPAL



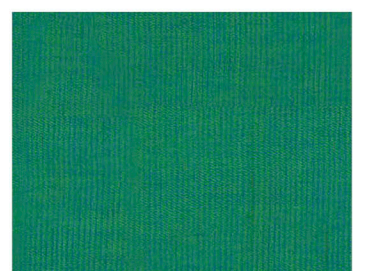
SCGP106.HELIOTROPE



SCGP104.AIRFORCE



SCGP105.TEAL



SCGP111.PISTACHIO

This presentation is a fair representation of design, scale and color of each fabric. The final fabrics will have very minimal changes.



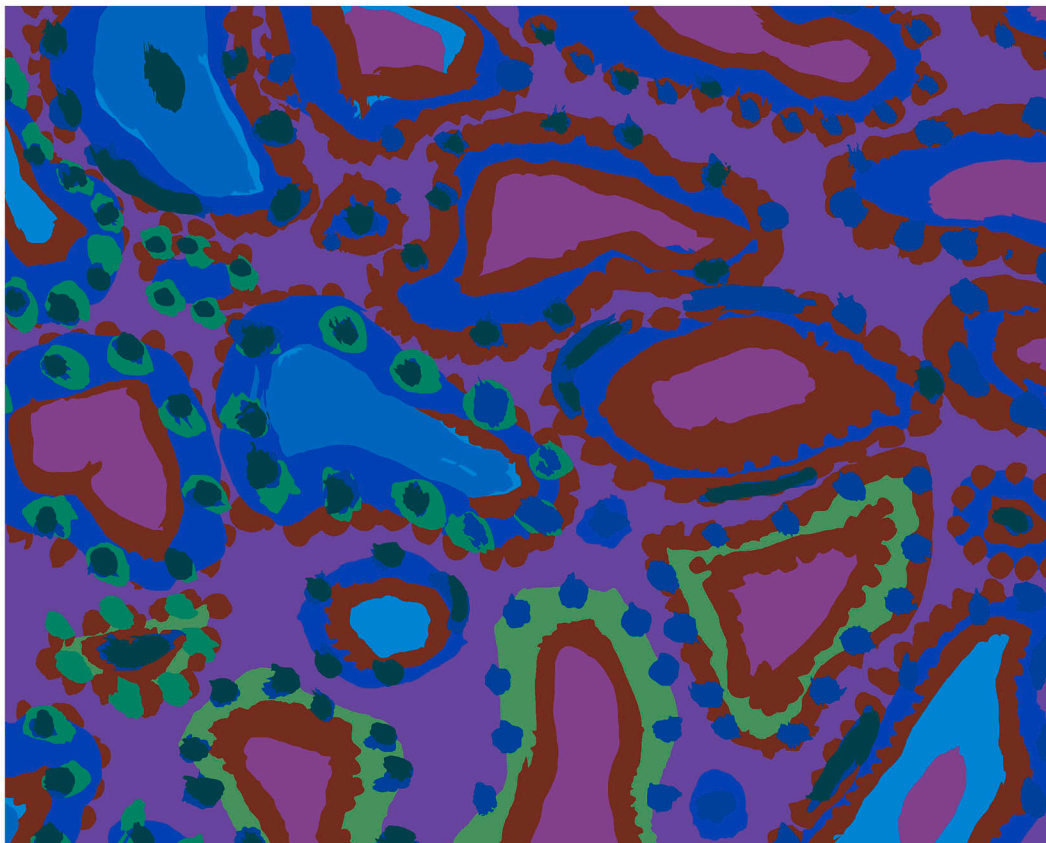


Watermelons PWPJ103.BLUE



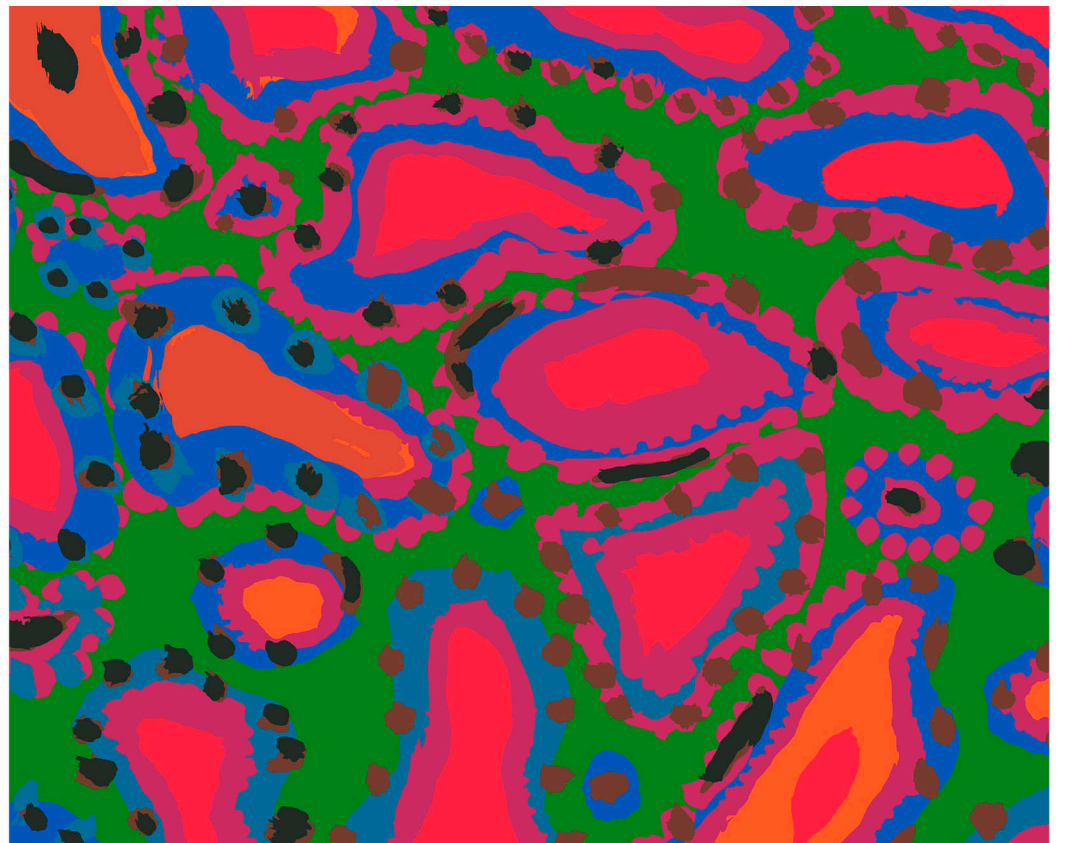
Inset shown at full width.

Repeat: Full Width x 12"H



Animal PWBM076.PURPLE

Repeat: 16"W x 12.5"H



Animal PWBM076.GREEN

Repeat: 16"W x 12.5"H



Dancing Dahlias PWPJ101.BLUE



Inset shown at full width.

Repeat: 28"W x 24"H





Amaryllis PWPJ104.RED

Inset shown at full width.

Repeat: 28"W x 24"H



Octopus PWBM074.BLUE

Inset shown at full width.

Repeat: 16"W x 16"H



Amaryllis PWPJ104.BLUE

Inset shown at full width.

Repeat: 28"W x 24"H



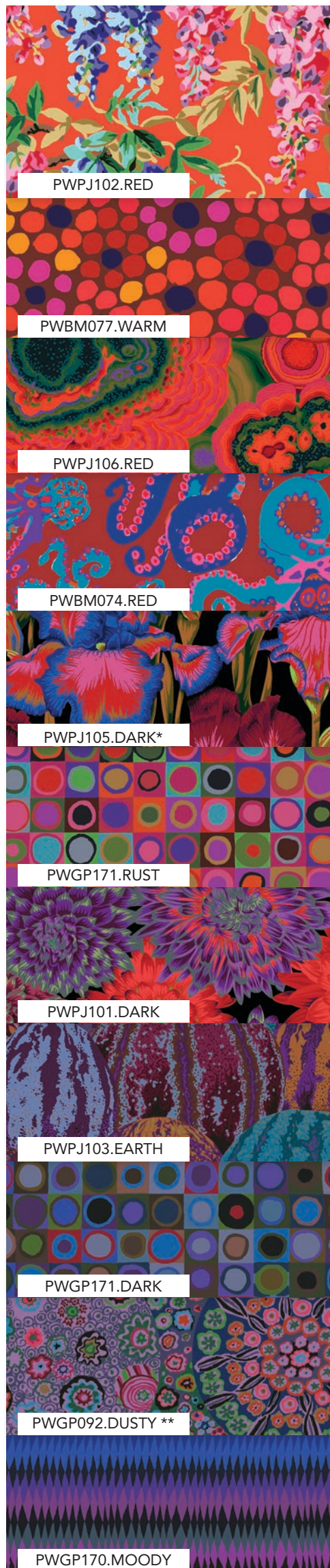
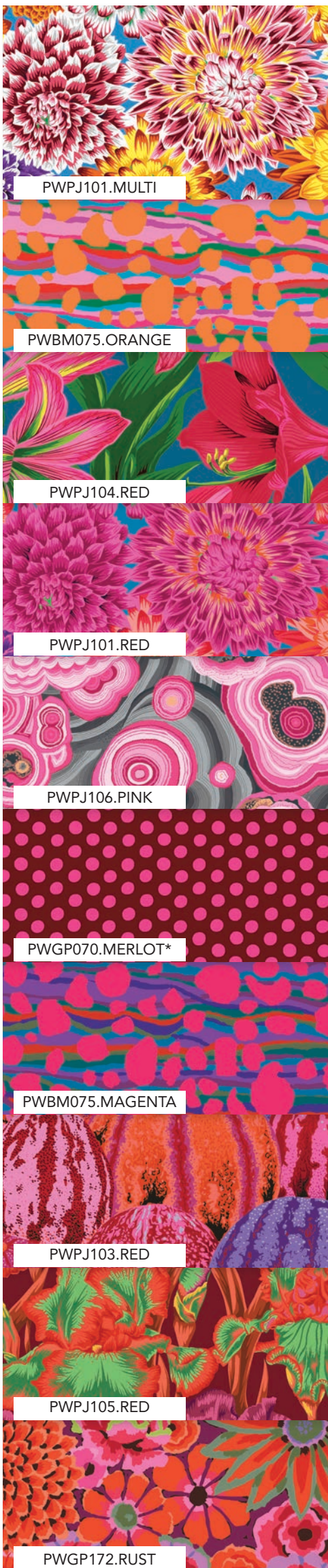
# Kaffe Fassett Collective August 2020 Pre-Cuts

featuring Kaffe Fassett, Brandon Mably & Philip Jacobs

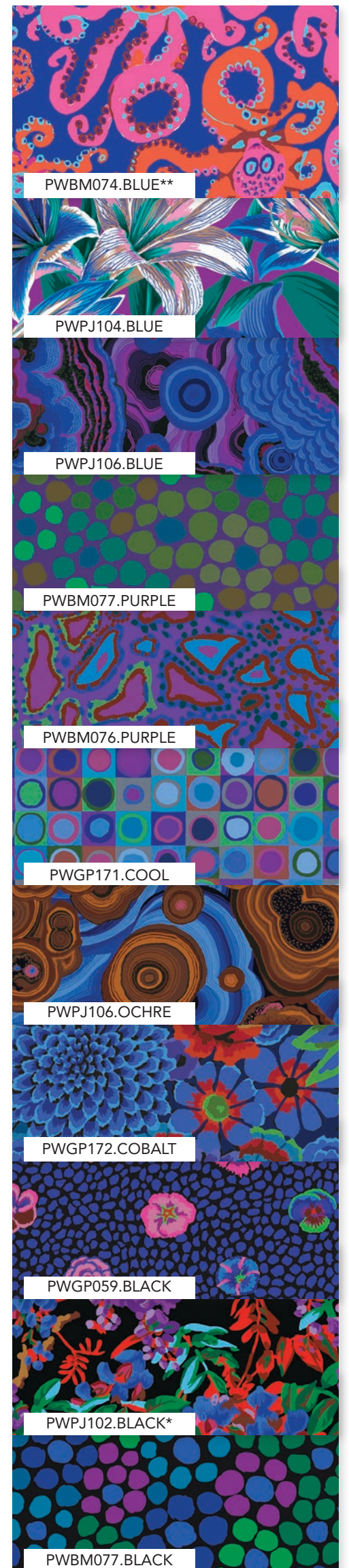
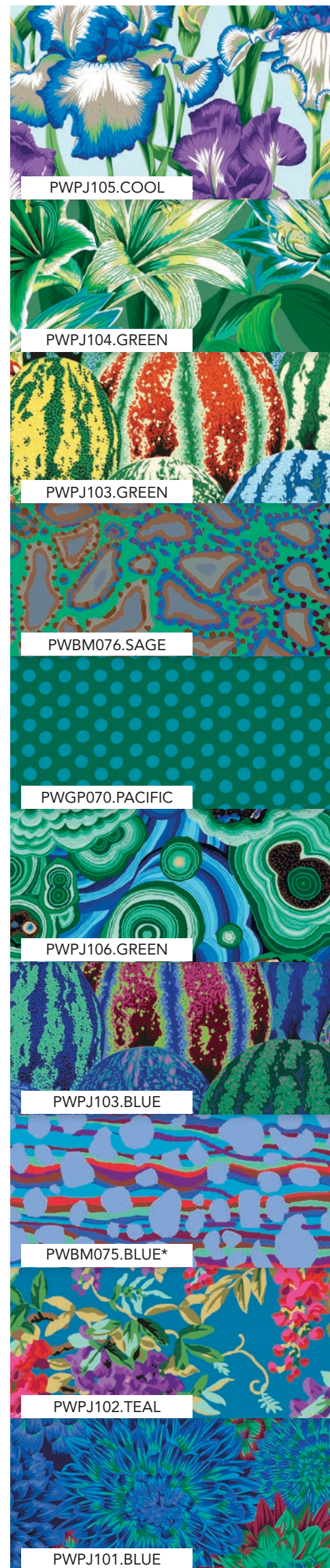
KAFFE  
FASSETT  
COLLECTIVE  
for

Free Spirit

## Hot Colorway



## Cold Colorway



## Fabric Pre-Cuts

Orders must be in multiples of minimum quantity.



Fat Quarter:  
21 Pieces

FB2FQGP.A2020HOT  
FB2FQGP.A2020COLD



Design Roll  
40 Pieces

FB4DRGP.A2020HOT  
FB4DRGP.A2020COLD



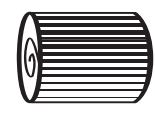
5" Charm Pack  
42 Pieces

FB6CPGP.A2020HOT  
FB6CPGP.A2020COLD



10" Charm Pack  
42 Pieces

FB610GP.A2020HOT  
FB610GP.A2020COLD



6" Design Strip  
20 Pieces

FB4DSGP.A2020HOT  
FB4DSGP.A2020COLD

Pre-Cuts Ship Date August 2020

Fabric patterns are not shown at actual size

Fabrics are included twice in design rolls and charm packs | \*Indicates fabric is included once in design roll | \*\*Indicates fabric is not included in design strip

This presentation is a fair representation of design and color of each fabric. The final fabrics may have very minimal changes.



# All Stacked Up Makeover Quilt

Designed by Linda and Carl Sullivan  
 Recolored by FreeSpirit Fabrics



Finished Size: 64" x 72" (1.63m x 1.83m)

Technique: Piecing

Pattern available at [freespiritfabrics.com](http://freespiritfabrics.com) - August 2020

## All Stacked Up Makeover Quilt Ordering Guide

SKU	Yards	Meters	12 kits	24 Kits	SKU	Yards	Meters	12 kits	24 Kits
PWPJ103.GREEN	1/4 yard	0.23m	1 bolt	1 bolt	PWBM075.ORANGE	1/8 yard	0.11m	1 bolt	1 bolt
PWPJ101.BLUE	1/4 yard	0.23m	1 bolt	1 bolt	PWGP170.PASTEL	1/8 yard	0.11m	1 bolt	1 bolt
PWBM075.GREEN	1/4 yard	0.23m	1 bolt	1 bolt	SSGP001.CANTALOUPE	1/8 yard	0.11m	1 bolt	1 bolt
PWPJ101.DARK	1/4 yard	0.23m	1 bolt	1 bolt	PWBM076.SAGE	1/8 yard	0.11m	1 bolt	1 bolt
PWGP059.BLACK	1/4 yard	0.23m	1 bolt	1 bolt	SSGP002.SULFUR	1/8 yard	0.11m	1 bolt	1 bolt
PWBM077.WARM	1/4 yard	0.23m	1 bolt	1 bolt	PWGP172.MAGENTA	1/8 yard	0.11m	1 bolt	1 bolt
PWGP070.PACIFIC	1/4 yard	0.23m	1 bolt	1 bolt	PWPJ102.GREY	1/8 yard	0.11m	1 bolt	1 bolt
PWBM077.BLACK	1/4 yard	0.23m	1 bolt	1 bolt	PWPJ103.EARTH	1/8 yard	0.11m	1 bolt	1 bolt
PWBM077.STONE	1/4 yard	0.23m	1 bolt	1 bolt	PWPJ104.GREEN	1/8 yard	0.11m	1 bolt	1 bolt
PWPJ106.BLUE	1/4 yard	0.23m	1 bolt	1 bolt	PWPJ102.BLACK	1/8 yard	0.11m	1 bolt	1 bolt
PWBM075.BLACK	1/4 yard	0.23m	1 bolt	1 bolt	PWPJ101.RED	1/8 yard	0.11m	1 bolt	1 bolt
PWPJ106.OCHRE	1/4 yard	0.23m	1 bolt	1 bolt	PWPJ105.DARK	1/8 yard	0.11m	1 bolt	1 bolt
PWGP092.MAUVE	1/4 yard	0.23m	1 bolt	1 bolt	PWGP171.COOL	1/8 yard	0.11m	1 bolt	1 bolt
PWPJ102.RED	1/4 yard	0.23m	1 bolt	1 bolt	PWBM076.PURPLE	1/8 yard	0.11m	1 bolt	1 bolt
PWPJ101.MULTI	1/4 yard	0.23m	1 bolt	1 bolt	PWGP029.VINTAGE	1/8 yard	0.11m	1 bolt	1 bolt
PWBM076.ORANGE	1/4 yard	0.23m	1 bolt	1 bolt	PWPJ106.RED	1/8 yard	0.11m	1 bolt	1 bolt
PWGP092.OCHRE	1/4 yard	0.23m	1 bolt	1 bolt	PWBM077.AQUA	1/8 yard	0.11m	1 bolt	1 bolt
PWGP172.COBALT	1/4 yard	0.23m	1 bolt	1 bolt	PWBM074.TURQUOISE	1/8 yard	0.11m	1 bolt	1 bolt
PWBM075.MAGENTA	1/4 yard	0.23m	1 bolt	1 bolt	PWBM076.PINK	1/8 yard	0.11m	1 bolt	1 bolt
PWPJ103.BLUE	1/4 yard	0.23m	1 bolt	1 bolt	PWBM076.GREEN	1/8 yard	0.11m	1 bolt	1 bolt
SSGP001.TURMERIC	1/4 yard	0.23m	1 bolt	1 bolt	PWBM077.PURPLE	1/8 yard	0.11m	1 bolt	1 bolt
PWPJ104.NATURAL	1/4 yard	0.23m	1 bolt	1 bolt	PWBM074.BLACK	1/8 yard	0.11m	1 bolt	1 bolt
PWGP070.MERLOT	1/4 yard	0.23m	1 bolt	1 bolt	PWGP171.RUST	1/8 yard	0.11m	1 bolt	1 bolt
PWPJ106.GREEN	1/4 yard	0.23m	1 bolt	1 bolt	PWGP070.INDIGO	1/8 yard	0.11m	1 bolt	1 bolt
PWBM074.ORANGE	1/4 yard	0.23m	1 bolt	1 bolt	PWPJ105.OCHRE	1/8 yard	0.11m	1 bolt	1 bolt
PWGP170.MOODY	1/4 yard	0.23m	1 bolt	1 bolt	PWGP071.WATER	1 yard	0.91m	1 bolt	2 bolts
PWGP172.RUST	1/8 yard	0.11m	1 bolt	1 bolt	PWGP171.DARK*	5/8 yard	0.57m	1 bolt	1 bolt
<b>44" Backing Fabric Option</b>					<b>108" Backing Fabric Option<sup>+</sup></b>				
PWPJ106.GREEN	4 yards	3.66m	4 bolts	7 bolts	QBGP004.2BLUE <sup>+</sup>	2 yards	1.83m	2 bolts	4 bolts

\* Indicates Binding Fabric

+108" Width fabric is on 12yd Bolts

All fabric quantities are based on 15yd Bolts unless otherwise indicated.

Yardage amounts above are estimates to buy against, not kit against.  
 For kitting please refer to the final pattern. It is recommended you make a quilt top prior to kitting.



# Crimson Poppy Quilt

Designed by Judel Niemeyer for Quiltworx



Finished Size: 68" (1.73m) Square  
 Technique: Foundation Piecing  
 Purchase pattern at [quiltworx.com](http://quiltworx.com)

Crimson Poppy Quilt Ordering Guide				
SKU	Yards	Meters	12 kits	24 Kits
PWGP070.MERLOT	1 yard	0.91m	1 bolt	2 bolts
GP71.IVORY	4 3/4 yards	4.34m	4 bolts	8 bolts
PWPJ101.MULTI	2 1/4 yards	2.06m	2 bolts	4 bolts
PWPJ101.RED	1 1/4 yards	1.14m	1 bolt	2 bolts
PWGP175.BLACK*	1 1/2 yards	1.37m	2 bolts	3 bolts
PWGP172.RUST	1/2 yard	0.46m	1 bolt	1 bolt
PWBM077.WARM	3/4 yards	0.69m	1 bolt	2 bolts
PWPJ096.YELLOW	1 1/4 yards	1.14m	1 bolt	2 bolts
PWGP071.ORCHI	2 3/4 yards	2.51m	3 bolts	5 bolts
<b>Backing Fabric Options</b>				
PWBM075.MAGENTA - 44" Width	4 1/4 yards	3.89m	5 bolts	9 bolts
QBG004.2PINK - 108" Width+	2 yards	1.83m	2 bolts	4 bolts
* Indicates Binding Fabric +108" Width fabric is on 12yd Bolts All fabric quantities are based on 15yd Bolts unless otherwise indicated.				

Yardage amounts above are estimates to buy against, not kit against.  
 For kitting please refer to the final pattern. It is recommended you make a quilt top prior to kitting.



# Swatched Quilts

Designed by Kaffe Fassett - Recolored by FreeSpirit Fabrics

Finished Size: 81" (2.05m) Square

Technique: Piecing

Pattern available at [freespiritfabrics.com](http://freespiritfabrics.com) - August 2020



## Swatched Ocean Quilt (Left) Ordering Guide Uses (1) FB2FQGP.A2020COLD

SKU	Yards	Meters	12 kits	24 Kits
PWPJ105.COOL	18" x 21"	.45m x .53m	1 bolt	1 bolt
PWPJ104.GREEN	18" x 21"	.45m x .53m	1 bolt	1 bolt
PWPJ103.GREEN	18" x 21"	.45m x .53m	1 bolt	1 bolt
PWBM076.SAGE	18" x 21"	.45m x .53m	1 bolt	1 bolt
PWPJ106.GREEN	18" x 21"	.45m x .53m	1 bolt	1 bolt
PWPJ103.BLUE	18" x 21"	.45m x .53m	1 bolt	1 bolt
PWBM075.BLUE	18" x 21"	.45m x .53m	1 bolt	1 bolt
PWPJ102.TEAL	18" x 21"	.45m x .53m	1 bolt	1 bolt
PWPJ101.BLUE	18" x 21"	.45m x .53m	1 bolt	1 bolt
PWBM074.BLUE	18" x 21"	.45m x .53m	1 bolt	1 bolt
PWPJ104.BLUE	18" x 21"	.45m x .53m	1 bolt	1 bolt
PWPJ106.BLUE	18" x 21"	.45m x .53m	1 bolt	1 bolt
PWBM076.PURPLE	18" x 21"	.45m x .53m	1 bolt	1 bolt
PWGP171.COOL	18" x 21"	.45m x .53m	1 bolt	1 bolt
PWGP172.COBALE	18" x 21"	.45m x .53m	1 bolt	1 bolt
PWGP059.BLACK	18" x 21"	.45m x .53m	1 bolt	1 bolt
PWPJ102.BLACK	18" x 21"	.45m x .53m	1 bolt	1 bolt
PWBM077.BLACK	18" x 21"	.45m x .53m	1 bolt	1 bolt

\* Binding is made using scraps from FQ pack

### Background Fabric - Not included in FQ

GP71.OCEAN	3 3/4 yards	3.43m	3 bolts	6 bolts
------------	-------------	-------	---------	---------

### Backing Fabric Options

PWBM074.BLACK - 44" Width	4 1/2 yards	4.11m	4 bolts	8 bolts
QBG003.2BLUE - 108"Width+	2 1/4 yards	2.06m	3 bolts	5 bolts

\* Indicates Binding Fabric

+108" Width fabric is on 12yd Bolts

All fabric quantities are based on 15yd Bolts unless otherwise indicated.

## Swatched Spot Quilt (Right) Ordering Guide Uses (1) FB2FQGP.A2020HOT

SKU	Yards	Meters	12 kits	24 Kits
PWPJ101.MULTI	18" x 21"	.45m x .53m	1 bolt	1 bolt
PWPJ104.RED	18" x 21"	.45m x .53m	1 bolt	1 bolt
PWPJ101.RED	18" x 21"	.45m x .53m	1 bolt	1 bolt
PWPJ106.PINK	18" x 21"	.45m x .53m	1 bolt	1 bolt
PWBM075.MAGENTA	18" x 21"	.45m x .53m	1 bolt	1 bolt
PWPJ103.RED	18" x 21"	.45m x .53m	1 bolt	1 bolt
PWPJ105.RED	18" x 21"	.45m x .53m	1 bolt	1 bolt
PWGP172.RUST	18" x 21"	.45m x .53m	1 bolt	1 bolt
PWBM077.WARM	18" x 21"	.45m x .53m	1 bolt	1 bolt
PWPJ106.RED	18" x 21"	.45m x .53m	1 bolt	1 bolt
PWBM074.RED	18" x 21"	.45m x .53m	1 bolt	1 bolt
PWPJ105.DARK	18" x 21"	.45m x .53m	1 bolt	1 bolt
PWGP171.RUST	18" x 21"	.45m x .53m	1 bolt	1 bolt
PWPJ101.DARK	18" x 21"	.45m x .53m	1 bolt	1 bolt
PWPJ103.EARTH	18" x 21"	.45m x .53m	1 bolt	1 bolt
PWGP171.DARK	18" x 21"	.45m x .53m	1 bolt	1 bolt
PWGP092.DUSTY	18" x 21"	.45m x .53m	1 bolt	1 bolt
PWGP170.MOODY	18" x 21"	.45m x .53m	1 bolt	1 bolt

\* Binding is made using scraps from FQ pack

### Background Fabric - Not included in FQ

GP70.HYDRA	3 3/4 yards	3.43m	3 bolts	6 bolts
------------	-------------	-------	---------	---------

### Backing Fabric Options

PWPJ104.NATURAL - 44" Width	4 1/2 yards	4.11m	4 bolts	8 bolts
QBG003.2PINK - 108"Width+	2 1/4 yards	2.06m	3 bolts	5 bolts

\* Indicates Binding Fabric

+108" Width fabric is on 12yd Bolts

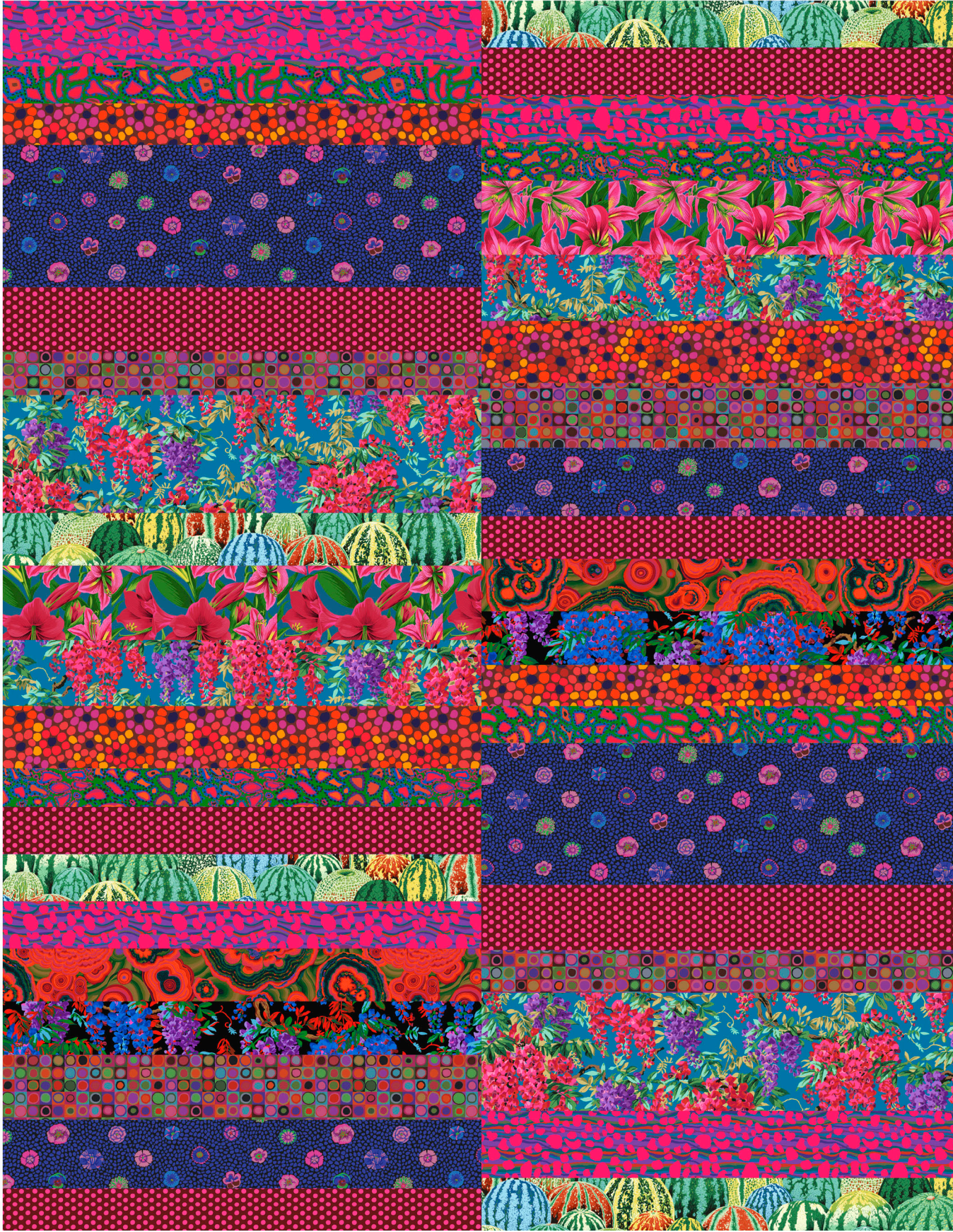
All fabric quantities are based on 15yd Bolts unless otherwise indicated.

Yardage amounts above are estimates to buy against, not kit against.  
For kitting please refer to the final pattern. It is recommended you make a quilt top prior to kitting.



# Banded Jump Quilt

Designed by Liza Prior Lucy - Recolored by FreeSpirit Fabrics



Finished Size: 80" x 94" (2m x 2.39m)

Technique: Piecing

Pattern available at [freespiritfabrics.com](http://freespiritfabrics.com) - August 2020

## Banded Jump Quilt Ordering Guide

SKU	Yards	Meters	12 kits	24 Kits
PWBM075.MAGENTA	5/8 yard	0.57m	1 bolt	1 bolt
PWBM076.GREEN	1/2 yard	0.46m	1 bolt	1 bolt
PWBM077.WARM	5/8 yard	0.57m	1 bolt	1 bolt
PWGP059.BLACK	1 1/8 yards	1.03m	1 bolt	2 bolts
PWGP070.MERLOT	7/8 yard	0.80m	1 bolt	2 bolts
PWGP171.RUST	5/8 yard	0.57m	1 bolt	1 bolt
PWPJ102.TEAL*	2 yards	1.83m	2 bolts	4 bolts
PWPJ103.GREEN	5/8 yard	0.57m	1 bolt	1 bolt
PWPJ104.RED	1/2 yard	0.46m	1 bolt	1 bolt
PWPJ106.RED	1/2 yard	0.46m	1 bolt	1 bolt
PWPJ102.BLACK	1/3 yard	0.30m	1 bolt	1 bolt

### Backing Fabric Options

PWBM074.BLUE - 44" Width	7 1/3 yards	6.71m	6 bolts	12 bolts
QBG004.2REDX - 108" Width+	2 1/2 yards	2.29m	3 bolts	5 bolts

\* Indicates Binding Fabric

+108" Width fabric is on 12yd Bolts

All fabric quantities are based on 15yd Bolts unless otherwise indicated.

**KAFFE  
FASSETT  
COLLECTIVE**

for

*FreeSpirit*

@kaffefassettstudio @kaffefassettstudio

@KaffeFassettStu KaffeFassettStudio

**68's COTTON**  
100% Cotton • 44/45" (114 cm) Wide  
15 Yds (13.7 m) D/R • Imported Screen Print

Care Instructions  
Machine wash cold, normal cycle with like colors.  
Do not bleach. Tumble dry low. Warm iron.  
⚠ Not suitable for children's sleepwear.



**SHOT COTTONS**  
100% Cotton • 44/45" (114 cm) Wide  
10 Yds (9.14 m) D/R • Woven in India

Care Instructions  
Machine wash cold, normal cycle with like colors.  
Do not bleach. Tumble dry low. Cool iron.  
⚠ Not suitable for children's sleepwear.



FreeSpirit Fabrics  
11121 Carmel Commons Blvd  
Suite 280  
Charlotte, NC 28226  
1-866-907-3305



[www.freespiritfabrics.com](http://www.freespiritfabrics.com)  
#freespiritfabrics

These designs are the property of FreeSpirit and are submitted to you in confidence for the sole purpose of soliciting your orders, in consideration of which you agree not to copy these designs or cause them to be copied directly or indirectly.  
©2020 All Rights Reserved  
Note: Paper reference and fabrics will never match exactly.

Yardage amounts above are estimates to buy against, not kit against.  
For kitting please refer to the final pattern. It is recommended you make a quilt top prior to kitting.