

Coronavirus Face Mask with Elastic & option for Ties

(not endorsed by any health facility)



Pattern by Pam Kauppila, Time Flies Quilt and Sew LLC

timefliesquiltandsew.com

#timeflieswhenyousewing

Revised 3/26/2020

Sewists and quilters want to help during this Coronavirus pandemic! If you are sewing, check with your local guild or sewing groups to see if this pattern complies with what they are looking for. I have had many requests for my pattern from near and far, so I am making it available for a free download. This is the pattern our local group, Masks for Marquette, is using. Everyone is working so hard in this endeavor. Thank you for all you are doing to stop the spread of this virus.

Materials Needed:

Batik or high quality 100% quilting cotton (no to flannels or fleece, bright colors and patterns are welcome) – Cut one piece 7.5” x 15” and two pieces 2” x 6”

22” inches of 1/4” elastic, cut two pieces: 11” each

Thread & simple sewing machine

Nose Piece that goes over the bridge of the nose (we have local craftsmen/women making these locally, and that is what our locals prefer) but you can use a twistie or pipe cleaner

One yard should make 5 masks if you cut the masks out with the grain

1. Cut batik into a 7.5” x 15” rectangle. Fold in half lengthwise, so your rectangle is now 7.5” by 7.5” and measure 1.5” from each edge. The picture shows your sew line, 1/2” seam. Leave a 4.5” opening in the middle. This opening is where a filter can be added into the mask later.
2. Serge or finish the 7.5” edges. I fold the edges above the sew line in a scant 1/4” and press flat. Fold it over again, and iron flat. Both sides of the seams will not fray.
4. Top stitch both sides into place and iron once again.
5. Turn so wrong sides are together, and move the seam down about 1/2” from the top. Edge stitch about 1/4” below the top, making a casing for the twist tie or nose piece to be inserted from the end.

6. Insert twist tie or nose piece and center it, stitch both ends, sewing directly over the twist tie with a reinforcing stitch, and being careful to NOT sew over the metal nose piece if using that. The goal is to hold the nose piece in place so it will not shift.

7. Make three pleats on each side of the mask, 1/4" fold so they take in about 1/2" total for each pleat.

8. Binding for the side of the mask 2" by 6" for each side. Fold each length to the inside and press a scant 1/4". Fold ends under 1/4" so they are finished.

9. Place the binding strip, right sides together on the top side of the mask, and stitch on the pressed line.

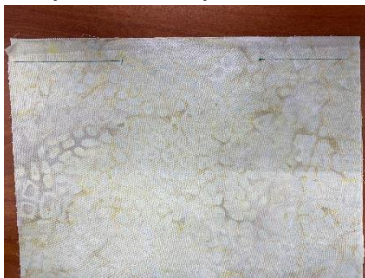
10. Fold over to the back of the mask, lay one piece of elastic into the binding, flip the binding over, making sure the other 1/4" is tucked inside. Use a few pins to hold and sew in place. Do not sew the elastic into the seam.

11. Tie the ends of the elastic together and leave exposed. The user can then adjust if needed.

Tie alternative: If you run out of elastic, you can make binding for the sides as in step #8. Cut two strips 2" x 42", turn both long edges in and iron, and then iron in half. You will have binding just like a quilt binding. Find the center of the strip and center on top of the mask. Stitch the entire edge of the strip together, making sure the mask raw edge is tucked inside the binding.



Step one, cut piece 7.5"x 15"



Fold in half, lengthwise and leave 4.5" opening in the middle, and stitch 1.5" from each edge.



Finish off the seams by turning under by $\frac{1}{4}$ ". Carefully topstitch.



Turn seam to the inside to 1" as shown. The slit is where the filter will be inserted by our local hospital. That is the inside of the mask.



Make $\frac{1}{4}$ " pleats, evenly spaced on the side of the mask as shown. Make sure when looking at the pleats, they face downward. Baste in place.



To prepare the binding, press $\frac{1}{4}$ " on three sides. Place right side of binding to the wrong side of the face mask. Stitch on the $\frac{1}{4}$ " ironed line. Flip the binding over to the right side and stitch close to the edge. When you get to the bottom of the binding, finger press the bottom edge up into place when stitching so you don't have any raw edges. This makes a casing where you can fish some elastic through. The picture shows me carefully encasing the $\frac{1}{4}$ " elastic inside.



Tie the elastic ends. Leave them out so the wearer can adjust if necessary.

How to substitute ties with elastic:

Cut strips 2"x 42", width of fabric. Press edges into the center, iron, then fold binding in half and press again. Zig zag the strip along the open edge to seal.



Using a bodkin, a safety pin or a turner like shown, fish the ties through the casing. Find the center of the strip, place at the center edge of the facemask and stitch in the center of the casing, back and

forth to hold the ties so they don't come out when washed. This cinches the face mask.

