

EASY PEASY SLIMLINE CARD & ENVELOPE

Designed by Carole Fulton, Crop A While

Slimline cards are really popular this season, so here is a card and envelope that can be adapted to any occasion. As well, slimline cards are an easy way to use the scenic papers in your stash.

- Finished, folded card will be 4.25x9"
- Finished assembled envelope will be 4.5x9.5"

What you need:

- 1 - 8.5x11" cardstock for card base
- 1 - 12x12" printed cardstock for card panels
- 1 - 12x12" printed or plain cardstock for envelope
- Embellishments to decorate card –glitter, stickles, enamel dots, ribbon whatever is in your stash.
- Two-sided tape
- Corner rounder

So let's get started with the card



- 1) Card base – Cut the 8.5x11" cardstock to 8.5x9"
– Score vertically in half at 4.25" and fold

- 2) Card paper: Choose your paper for card.
Use papers with long 'scenic' images.
The sample was made with 49 and Market, Peace & Joy Wishes (VPJ-34697)

- 3) Card panels: Cut paper vertically into three 4x 12" strips



Shorten each strip to 8.75" keeping the part of the scene you want either at top or bottom. In the sample the front and inside left panels were cut from the top and the right panel was shortened from the bottom.



- 4) Finish card: Attach panels to card front and insides using t adhesive of your choice. Add embellishments and sentiment of your choice. Sample card has Diamond and Christmas Red Stickles, Nuvo drops and Your Next Stamp Gumdrops. Add sentiments of your choice.

EASY PEASY SLIMLINE CARD & ENVELOPE

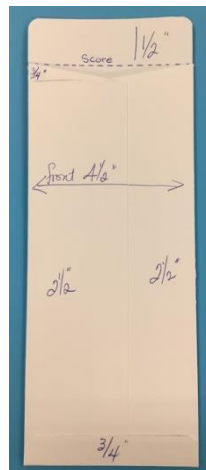
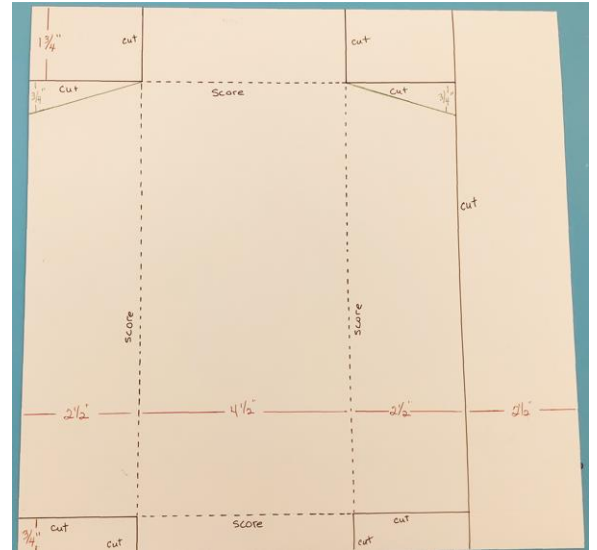
Designed by Carole Fulton, Crop A While

And now for the envelope

- 1) Start with a 12x12" cardstock and cut it to 9.5x12"

The template was designed using Bazzill Marshmallow which is a heavier (100 lb) smooth cardstock. The sample was done with a regular Bazzill white (has a bit of texture). Patterned paper/cardstock can also be used for the envelope.

- 2) Next score vertically at 2.5" from each side to create the envelope front and back panels.
- 3) Then score across the bottom at .75" and across the top at 1.75" to create the envelope bottom and top flaps



- 4) Attach back panels together with two-sided tape.
- 5) Use punch to round corners of flaps
- 6) Fold up bottom and tape to envelope using two-sided tape.
- 7) Optional – If you like, you can also decorate the outside of the envelope .

AND VOILA!
Your card and envelope are done.

