

Migrating Geese

Supply list (1 page)

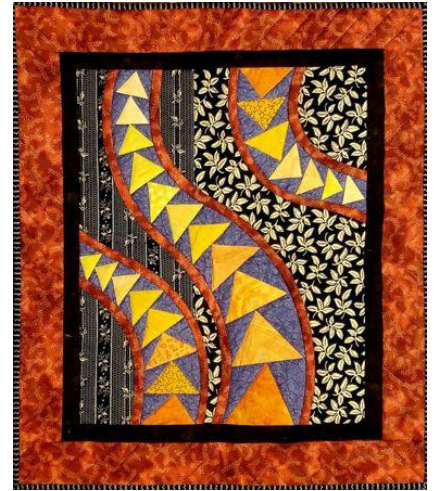
Instructor: Helene Knott 503-888-9784 Email: helene.m.knott@gmail.com

Website: www.heleneknott.com

It is remarkably easy to draft these flowing bands of 'geese'. In the traditional pattern, the lines of triangles are even and engineered to perfection, but the same geometry can be applied to the space between meandering lines. For this project, you can draft your own flock of geese in whatever size you wish, or use the pattern for a small project provided in the class to learn the process. NOTE: If you opt to draft your own geese, it's helpful to have a project in mind, such as a table runner or small wall hanging, so you can make your bands the right size. The bands of migrating geese are made independently and then 'applied' onto a quilt, making them easy to sew with no curved piecing involved. They can be made as a standalone design or applied over another quilt design.

Please be courteous to others by arriving for class with the correct supplies. Contact me at 503-888-9784 or helene.m.knott@gmail.com if you have any questions.

A Note to Students: Many students do not realize that once the teacher is paid, the shop offering a class makes little if any income on the class itself. The shop is relying on product sales to continue offering quality classes to you. Therefore, I urge you to patronize this shop when buying your supplies for this class as much as possible and remind you that big chain stores do not offer the variety of classes that the smaller shops do. Keep quilt classes alive by supporting this shop.
Thank you, Helene



TOOLS/MATERIALS:

- **Fabric:** For a small exploratory sample, you will need a fat quarter of background fabric for the base panel. For best results, the color and of this fabric should contrast but coordinate well with the fabrics chosen for the bands of 'geese'. For the bands of geese you will need three fabrics – one for the 'geese', one for the background around the geese and one for the framing strips on either side of the flocks. A fat quarter – ½ yard of each will be fine. If you are a scrap saver, the triangular geese can be scrappy and this is an excellent project to eat up those scraps (bring a variety of pieces around 3"- 6" square), but the background pieces will look better if they are consistent in color and the framing strips will be cut on the bias so fat quarters are critical for these. Avoid bold or overly busy prints as they will diminish the visibility of the geese, subtle prints or textures are best.
- **Golden Threads™ Quilting Paper:** a 12" wide roll will do but I use it often enough that I prefer to buy the wider rolls and cut them down if I need to plus a wider roll will allow you to make wider bands of geese if you wish. Note: there is a similar tracing paper on a roll made by Pellon if you have trouble locating the Golden Threads brand.
- **Standard or mechanical graphite (lead) Pencil and a good eraser:** If you bring a regular pencil make sure it is sharp and bring a pencil sharpener as well. Make sure you have a separate eraser, the ones on the pencil ends are never enough.
- **18" – 24" Flexible Curve Ruler (optional):** This is a semi-stiff ribbon-type ruler that can be bent into curved shapes to help draft undulating curves. It is optional and only needed if you plan to draft your own bands of geese; you can also draw curves free-hand.
- **Rotary cutter, small/medium cutting mat and a 6" square and 18" (or larger) ruler:** the smaller ruler will be used for both tracing the geese and trimming seam allowances after sewing and the larger for cutting bias strips.
- **Embroidery scissors or thread snips**
- **Seam ripper:** if you position and sew carefully, you will not need to rip but it's better to have one on hand.
- **Sewing pins**
- **11" x 17" sheet of copy paper (optional – needed only if you want to draft your own bands of geese):** this is a good use for recycled office paper; you will need this for a small-medium project; for a larger project you can use freezer paper off a roll.
- **Thread:** In a neutral color that works well with your fabrics **and** a color that matches the finishing band color you chose.
- **Sewing Machine:** With a ¼" piecing foot.

Migrating Geese

Supply list (1 page)

Instructor: Helene Knott 503-888-9784 Email: helene.m.knott@gmail.com

Website: www.heleneknott.com

- **Pattern:** You may draft your own pattern but a pattern in two sizes (8 ½" x 11" and 11" x 17") are supplied in the class.