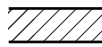







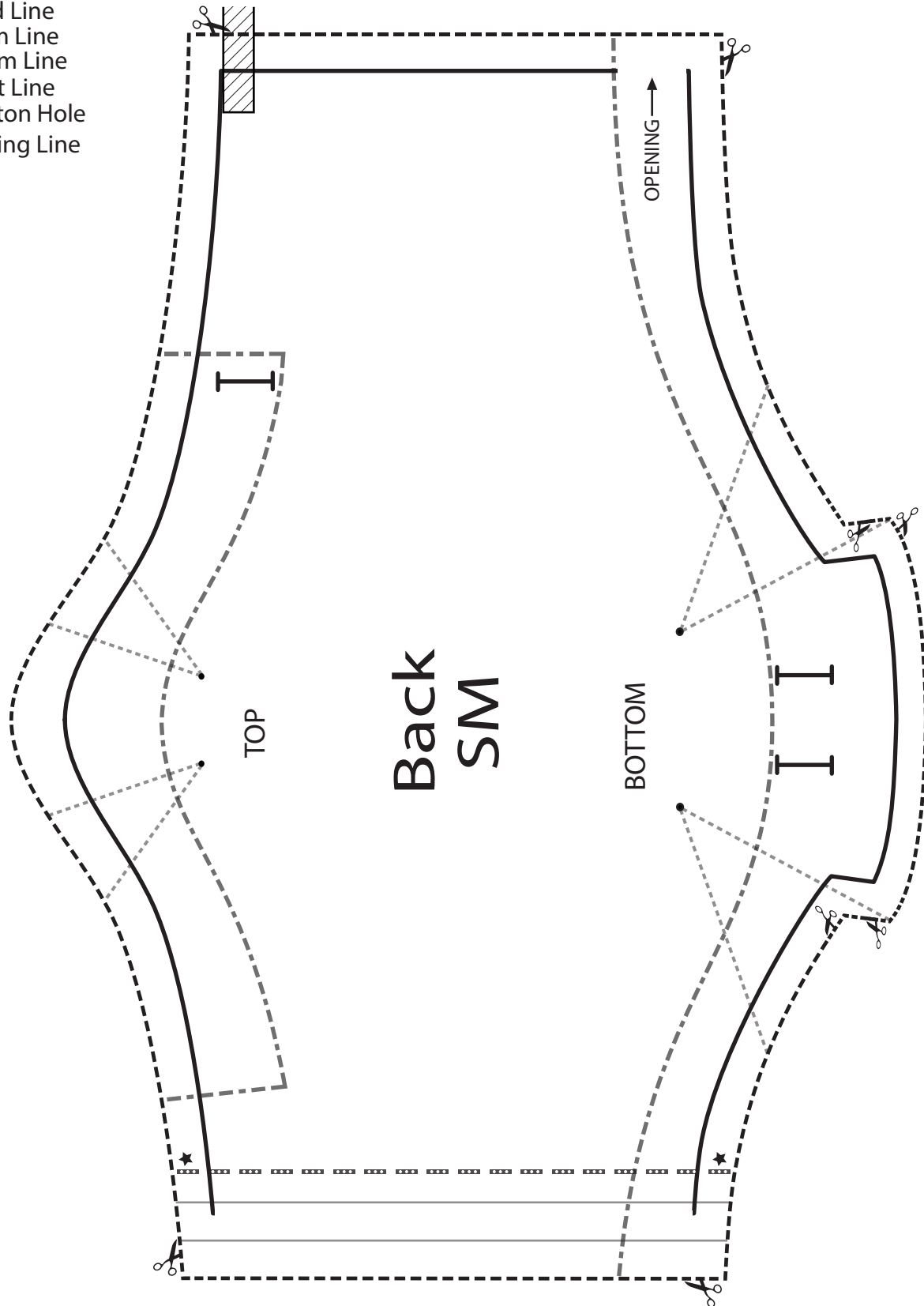







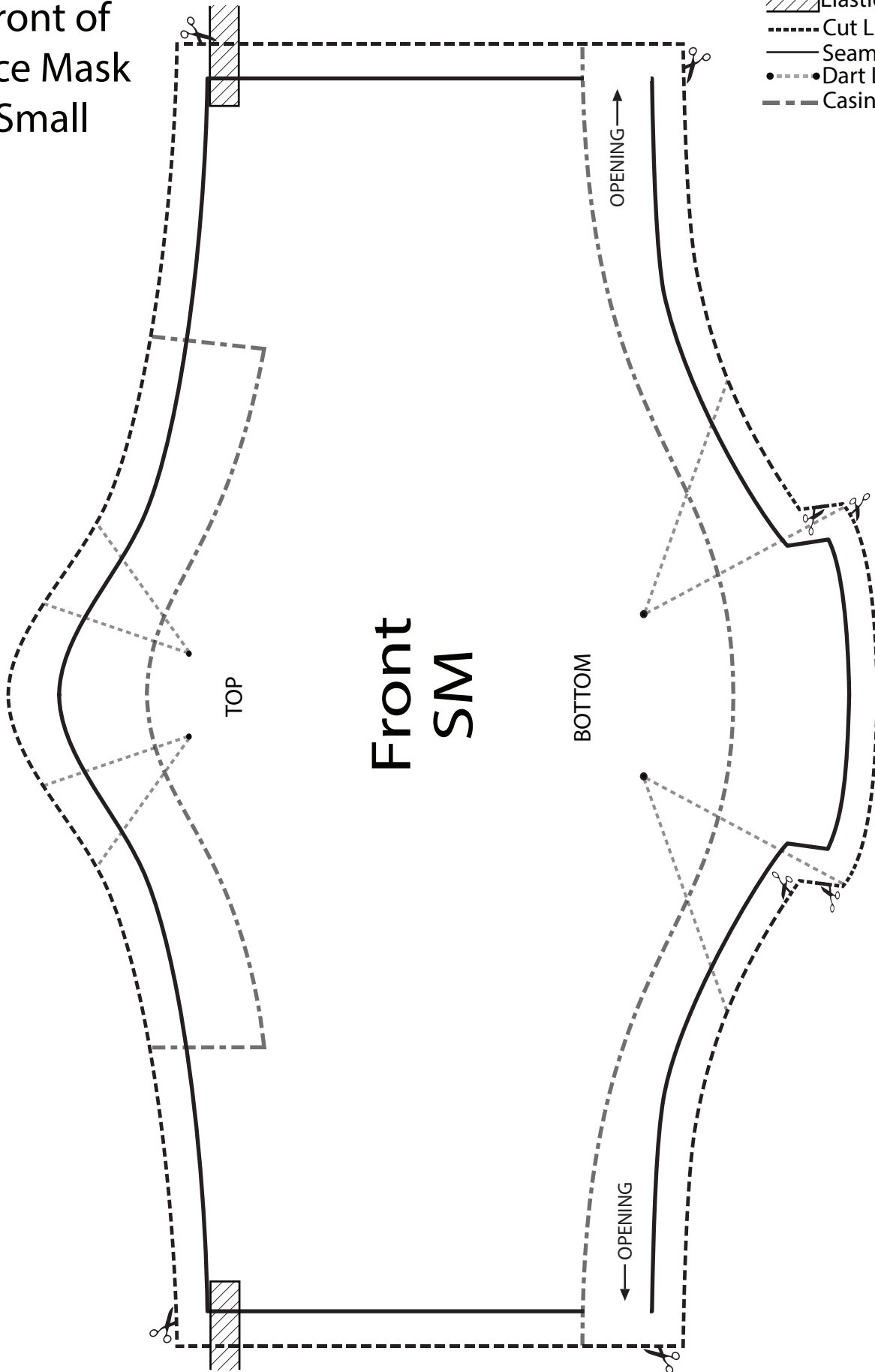
Back of Face Mask Small

-  Elastic Placement
-  Cut Line
-  Fold Line
-  Hem Line
-  Seam Line
-  Dart Line
-  Bottom Hole
-  Casing Line

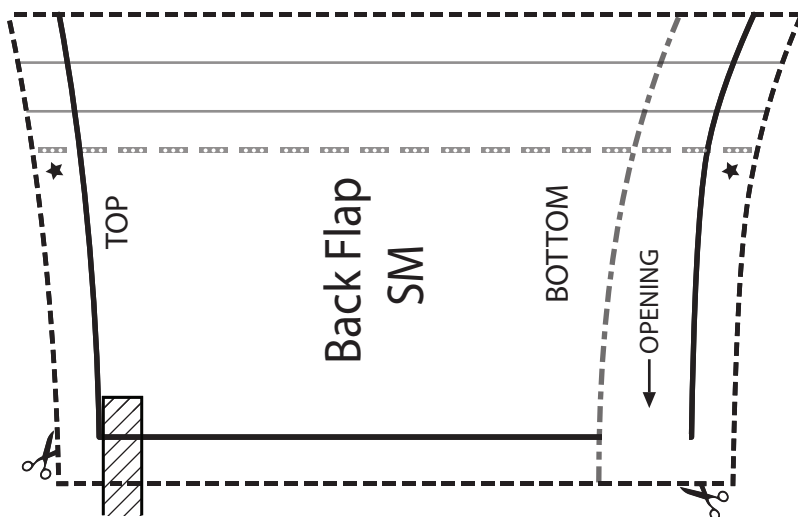
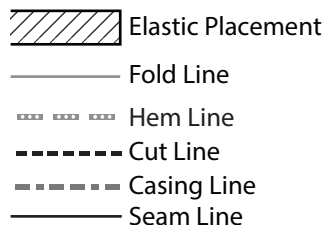


Front of
Face Mask
Small

-  Elastic Placement
-  Cut Line
-  Seam Line
-  Dart Line
-  Casing Line



Back Section for "Filter Pocket" Small



Materials:

- Tightly woven cotton fabric by 24" x 28" (about $\frac{3}{4}$ of a yard)
- 80/20 badding
- 2x $\frac{1}{4}$ " elastic bands at 15" length
- 20 gauge wire at 8" length
- Thread

Tightly woven fabric is important, some acceptable fabric you can use are bed sheets or pillow cases for example. You can use either 100% cotton or cotton blend. Just make sure they're pre shrunk. Instead of 20 gauge wire a paper clip can work in its place. For home use, you can use a coffee filter or a few tissue papers as replaceable filters. These are reusable but should be washed after use.

1. Cut the fabric according to the pattern. For the badding use the Front pattern again to cut out.
2. Mark the fabric for the darts, buttonholes, opening and ★ symbols.
3. Stitch the buttonholes.
4. Fold (twice by $\frac{1}{4}$), press and hem the Back & Back Flap on the sides shown on the pattern.
5. Secure (bast) the Back & Back Flap together by a scant $\frac{1}{4}$ ". Make sure you line up the two pieces where you marked previously from the ★ symbol.
6. Pin the darts on the top and bottom of this piece you just basted together. Then stitch the darts.
7. Press the darts on top so that they are facing away from the buttonhole
8. Press the darts on bottom so that they are each facing away from each buttonhole they are next to.
9. On the Front piece secure or bast the bading on the wrong side by a scant $\frac{1}{4}$ "
10. Finger fold, pin and stitch the darts on the top and bottom on the Front piece (including the badding.)
11. Place the right sides together and pin them. Stitch a $\frac{1}{4}$ " seam across the top and bottom. Make sure the Front darts are mirroring the pressed darts on the back.
12. Insert the elastic bands in between the Front & Back fabrics. At the top leave the end of the elastic so there's a $\frac{1}{4}$ " tail left sticking out. Do this on both sides.
13. Stitch the elastic in place and reinforce it by 2 or 3 times.
14. Stitch the hem on the sides starting from the top. Make sure you do not stitch the elastic bands that are inside. Leave an opening at the bottom by $\frac{3}{4}$ " or where you have marked the fabric previously.
15. Turn the piece right side out through the opening or "pocket hole" on the Back.
16. Press the seams around the mask.
17. Stitch the casing on the top where you previously marked. The stitch should be down by $\frac{5}{8}$ " or more, making sure the stitch is directly under the buttonhole and the bottonhole is inside the casing stitch.
18. Stitch the casing on the bottom where you previously marked. This should start the end of the seam where you left an opening. The casing should be $\frac{1}{2}$ " or make sure it's big enough for the $\frac{1}{4}$ " elastic bands.
19. Fish the elastic through the opening and out of the closest buttonhole. Do this on each side. (Using a safety pin on the edge of the band can help make this easier.)
20. Once the elastic bands are through the buttonholes, secure the ends together. You can do this by either tying or stitching them together.
21. Bend the ends of the wire inward and insert it into the top casing.