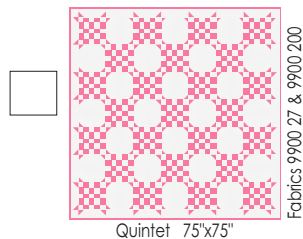


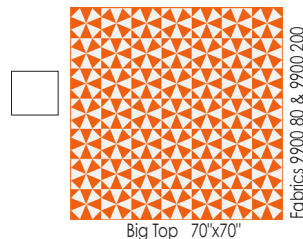
moda **Bella Solids**
Classic 2-color Quilts
"the magic of two"

Make all 6 Bella Classics

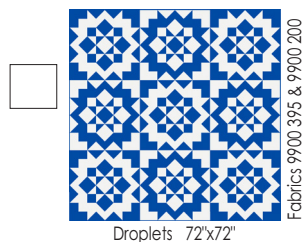
Bella Classic 1



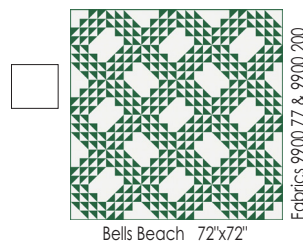
Bella Classic 4



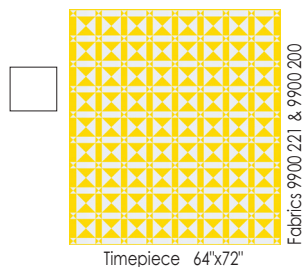
Bella Classic 2



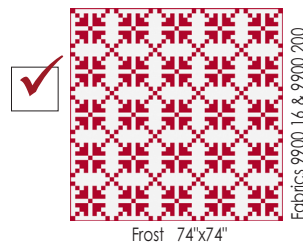
Bella Classic 5



Bella Classic 3

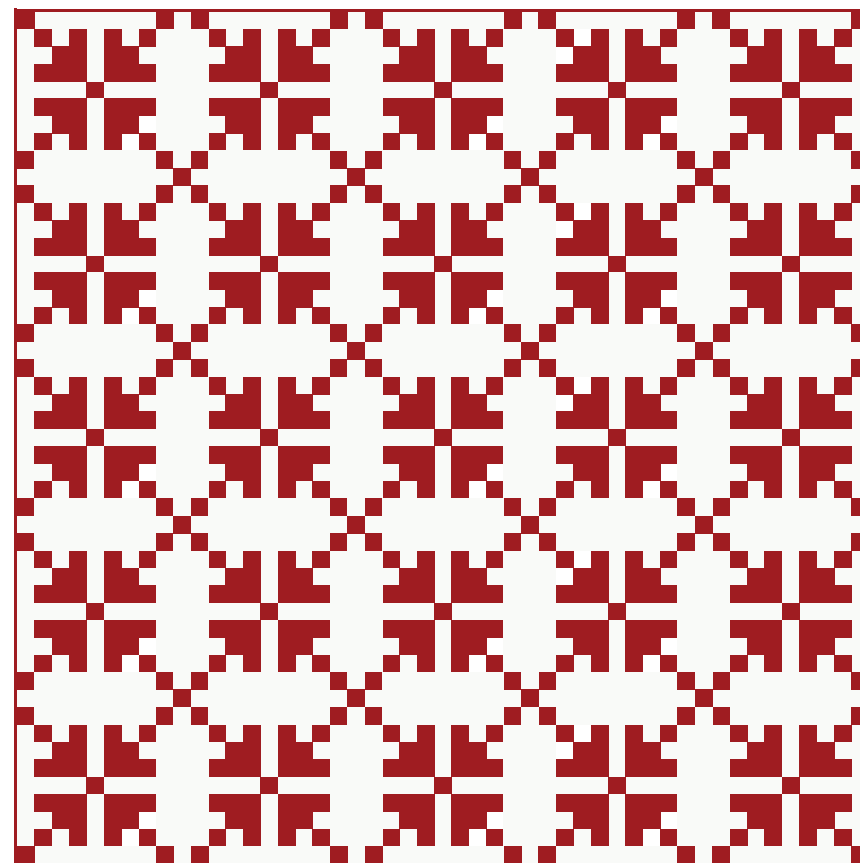


Bella Classic 6



moda **Bella Solids**
Classic 2-color Quilts
"the magic of two"

6



Bella Classic 6 - Frost

Finished Size: 74"x74"

Color 1 (9900 16)– 3 yds.

Color 2 (9900 200)– 3½ yds. – Bkgd.

Backing – 6½ yds.

moda FABRICS + SUPPLIES®



© 2021 All rights reserved.

moda

moda
Bella Classic 6 - Frost

Cutting:

Color 1 – Red

- From the yardage, cut 41–2"xWOF strips.
Set aside 10–2" x WOF strips for 4 Patch units and 7–2"xWOF for 9 Patch units.
- From the 24 remaining 2"xWOF strips cut the following:
 - From 1 strip, cut 20 – 2"x2" squares.
 - From 9 strips, cut 99 – 2"x3½" rectangles.
 - From 12 strips, cut 96 – 2"x5" rectangles.
 - From the last strip cut 1 – 2"x3½" rectangle 4 – 2"x5" rectangles. (For a total of 100 of each) and cut 9 – 2"x2" squares (For a total of 29 for large blocks and border corners.)
- Cut 8 strips - 2½"xWOF for binding.

Color 2 – White

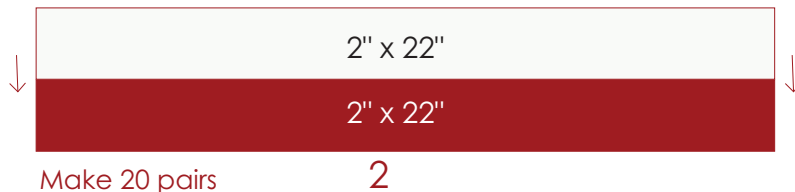
- From the yardage, cut 15 – 2"xWOF strips.
Set aside 10 – 2"xWOF for 4 Patch units and 5 – 2"xWOF for 9 Patch units.
- Cut 5 strips - 5" x WOF
From the strips, cut 100 – 2"x5" rectangles for Large Blks.
- Cut 6 strips - 11"xWOF
From 5 strips, cut 40 – 5"x11" sashing rectangles.
From the remaining strip, cut 20 – 2"x11" rectangles for outer border.

Construction:

4 Patch Blocks

Select 10 – 2"xWOF strips each from Color 1 and Color 2.
Cut each strip in half to make 20–2"x22" strips from both colors.

Using a ¼" seam, stitch strips into red and white pairs. Press seam toward Color 1. Make 20 pairs.



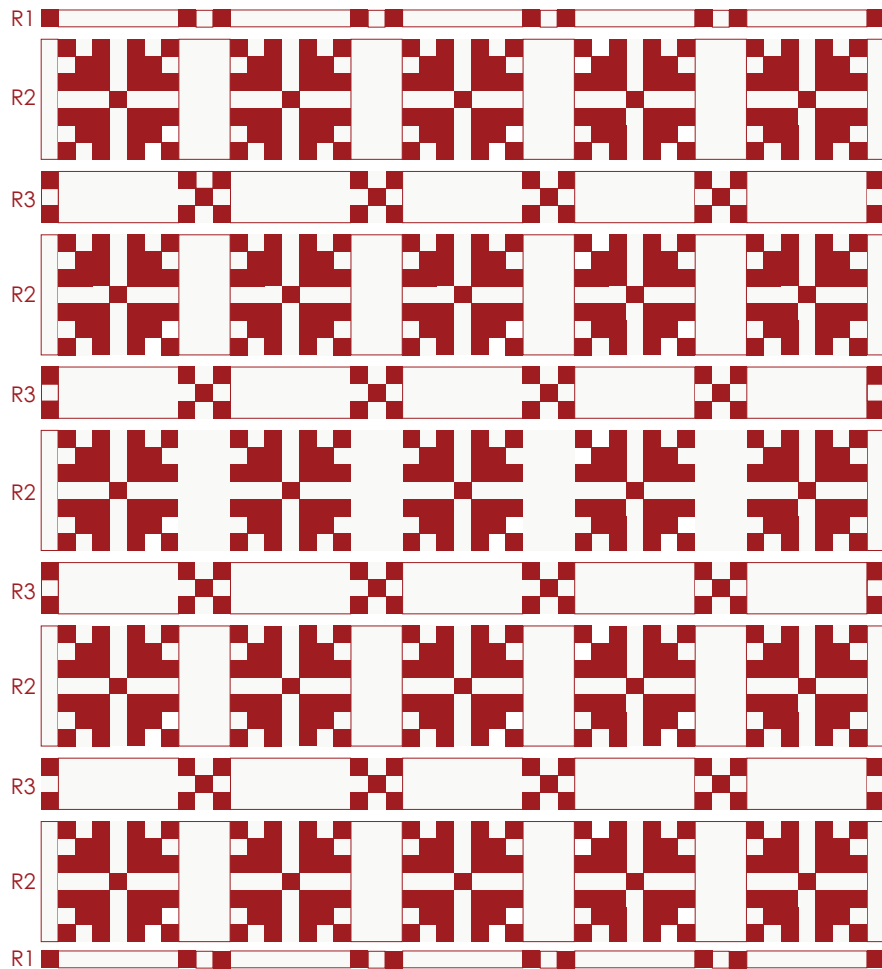
Optional edge-stitching - for pieced borders/edges, we recommend stay-stitching a continuous seam ⅛" from the edge of the quilt top. This keeps seams together during machine-quilting.

Finishing:

1. Using a diagonal seam, join the 8 remaining strips end to end. Press seams open. Fold prepared strip in half wrong sides together and press to make the binding.

2. Layer, Quilt, and Bind.

Assemble Quilt



Join the rows.
Press seams toward Rows 1 and Rows 3
or press the seams open.
Quilt should measure 74"x74" with seams.

moda

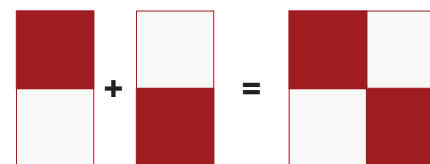
Visit us at modafabrics.com

Construction (cont.)

Cut 10 -2"x3½" units from each strip set.
Cut a total of 200 units from the 20 pairs.



Join 2 units to make a four patch block.



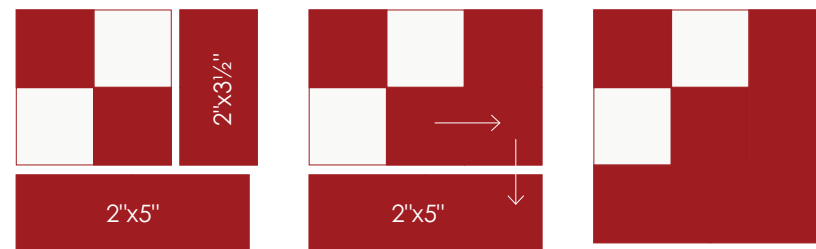
Make 100 Four Patch Blocks

Four patch block
should measure
3½"x3½" with seams.

Press seam open.

Corner Units

Select 1-Color 2"x3½" rectangle and 1-Color 2"x5" rectangle. Join to right side and bottom of each Four Patch unit. Press seams toward red rectangles.



Unit should measure 5"x5" with seams.

Make 100 Corner Units

moda

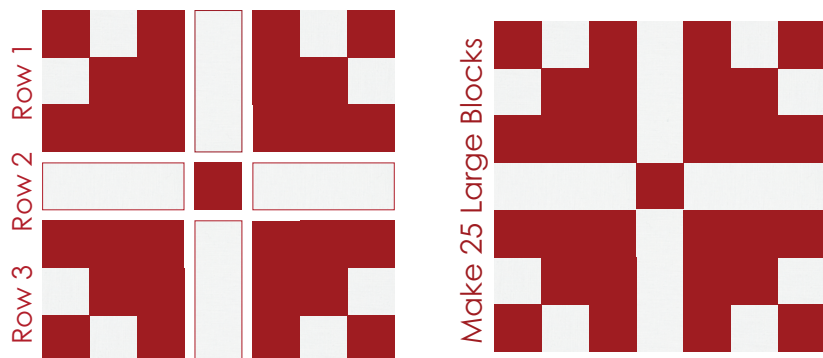
Visit us at modafabrics.com

Construction (cont.)

Complete the Large Block

Select 4 Corner Units, 1-Color 1 2"x2" square and 4-Color 2 2"x5" rectangles.

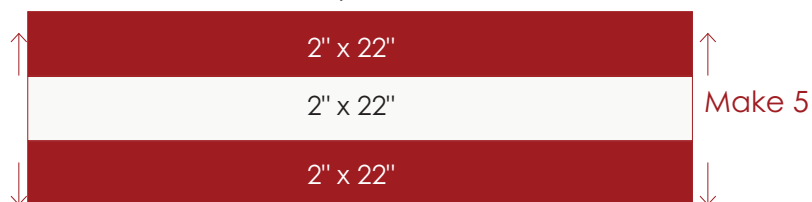
Join parts to make 3 rows. Press seams toward sashing strips.



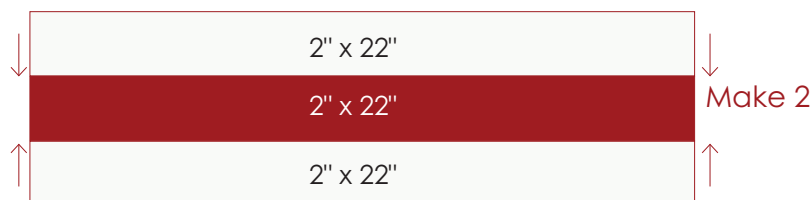
Block should measure 11"x11" with seams.

Nine Patch Blocks

Select 7 – 2" x WOF strips from Color 1 and 5 – 2" x WOF Color 2. Cut each strip in half to make 14 – 2"x22" strips from Color 1 and 10 – 2"x22" strips from Color 2.



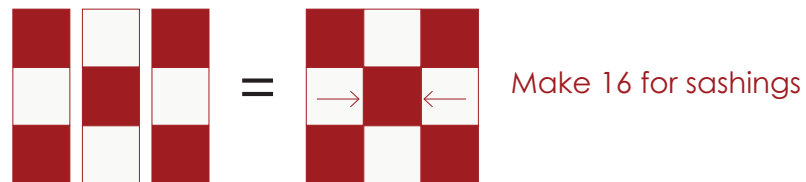
Make 5 Red/White/ Red Strip Sets – Cut a total of 48 – 2"x5" RWR units. 16 units for outer border and 32 for 9 Patch blocks



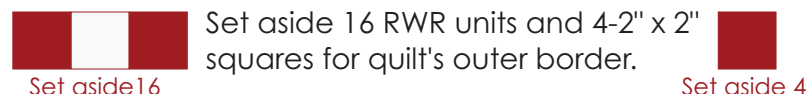
Make 2 White/Red/ White Strip Sets – Cut a total of 16 – 2"x5" WRW units for Nine Patch block centers

Assemble Nine Patch Blocks – Make 16

Each Nine Patch block requires 2 RWR units and 1 WRW unit. Press seams toward center.



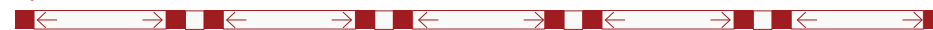
9 Patch blocks should measure 5"x5" with seams.



Assemble Quilt Rows

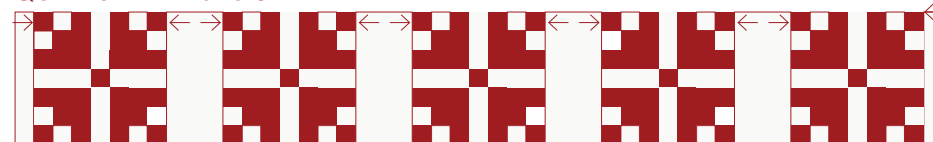
Press seams in direction of arrows.

Quilt Row 1- Make 2



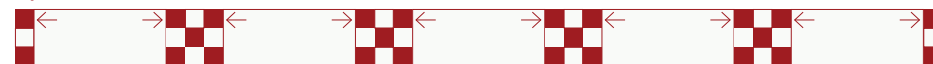
Row requires 2-2"x2" red squares, 5-2"x11" rectangles and 4 RWR units. Make two for top and bottom of the quilt.

Quilt Row 2- Make 5



Row requires 2-2"x11" white rectangles, 4-5"x11" white rectangles and 5-large pieced blocks. Make five rows.

Quilt Row 3- Make 4



Row requires 2-RWR units, 5-5"x11" rectangles and 4-Nine Patch units. Make four rows.

moda
Visit us at modafabrics.com