

## Weekly Newsletter

---

### Good News!



### San Francisco Street Bar & Grill is back, thank goodness

San Francisco Street Bar & Grill  
(50 E San Francisco St., (505)982-2644)

From the Santa Fe Reporter: Many readers out there will know precisely whom I mean when I say my party received killer service from legendary Santa Fe server Bob—aka Ernie Bob—during a recent visit to the reopened San Francisco Street Bar & Grill. No one knows the man's last name for sure; no one has ever seen him outside of a restaurant; I'm pretty sure he just emerged from the mist one day many years ago.

Regardless, seeing his beaming face at the newly-resurrected Plaza restaurant the other night was auspicious—we knew whatever else happened, he would take good care of us. And so he did.

But let's backtrack just a little bit: Yes, friends, San Francisco Street Bar & Grill (50 E San Francisco St., (505)982-2644) has reopened after shuttering in March 2020 thanks to the stupid pandemic. Founder Rob Day (also of the former Santa Fe Bar & Grill at the De Vargas Center, which has since, of course, become Dr. Field Goods) had always been a stalwart purveyor of affordable food, so the deal was tragic; especially so after the upstairs eatery became another link in the Lone Spur Café chain, which also counts locations in Arizona and Colorado. Santa Fe diners never really warmed to that place, though, so it closed last year to little, if any, concern from the townsfolk. As of late-October, however, former multi-decade San Francisco Street Bar & Grill employees Victor Medina, Carlos Rivas and Sergio Sanchez have taken over and reopened the good ol' San Francisco

Street Bar & Grill, and it's actually worth climbing all those stairs again.

[Read More](#)

---

## Announcements

### King Tut



### We Have Replenished the TOP 36 COLORS of KingTut

The thread of choice for those who prefer cotton for quilting!

---

## Featured Janome Machines



### Bi-Level Feet

This foot enables sewing at a constant width from the fold of the fabric. It guides your topstitching and edge stitching perfectly. Thick materials (e.g. wool, denim, tweed) can be finished beautifully. It's also the perfect tool for bag making, which can have several thick seams to work with.

[Janome 9mm Bi-Level Foot](#)  
[Janome 7mm Bi-Level Foot](#)

[See All Janome Feet](#)

---

## Featured Products

### Sewing Rainbow 500pc Puzzle

When you want to play with color but need



to take a break from your sewing, this jigsaw puzzle is the answer! Made from the highest quality puzzle board and soy based inks. Just 500 pieces!

Finished Size: 20in x 27in

[See What Else is NEW](#)

## What We're Up To

Margene made this NEW store sample. It's the second in a series of monthly appliquéd banner patterns. Quick to complete at only 6" x 20".



## Classes

### [Learn-to-Sew: Basics](#)

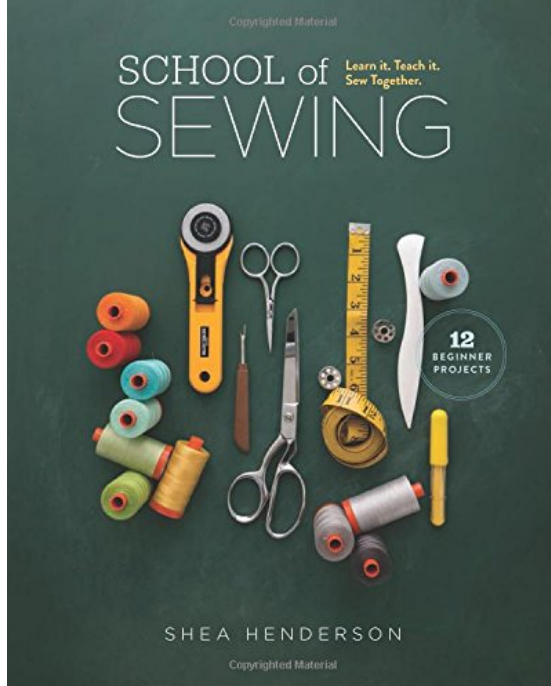
Wed, Feb 7, 9:30 am to 12:30 pm

This one-session class will cover machine anatomy, threading, bobbin winding, how to sew basic stitches, and maintain your machine. We will also discuss essential tools and materials. Open to all makes and models of sewing machines.

Ages 15 and up



Teacher: Liz Ballowe



[Class Fee: \\$25](#)

[Book: \\$25 \(optional\)](#)

[Supply List](#)

## [Monthly Mini Banner Class](#)

Thu, Feb 8, 9:30 am to 12:30 pm

Designed with the beginner in mind, these appliqued Mini Banners are also a great project to help you get back in the swing of Sewing Fun. Monthly patterns have a seasonal theme and include whimsical metal hangers. Some months even include cute buttons! For our first session you can choose to work on either January or February's snowy design. New to machine appliqué? Attend a Monday Mentor Sew, free of charge, and learn how to prepare your fabric shapes so you'll be ready for class. Finished banner measures 6" x 20".

Teacher: Margene

[Class Fee: \\$24](#)

[Cardinal Flurries Pattern: \\$49](#)

[Snow Much Love Pattern: \\$35](#)

[Supply List: Coming Soon](#)



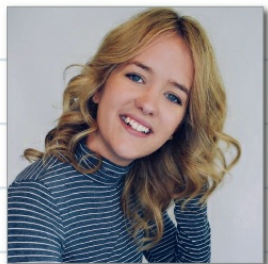
**CLASS CANCELLATION POLICY:** You must cancel 48 hours or more before the start time of your class for a full refund. Classes cancelled after 48 hours cannot be refunded.

[Visit Our Class Page](#)

**Inspiration**



## Learn Tricks and Tips for Brilliant Results From Beginners to Pros

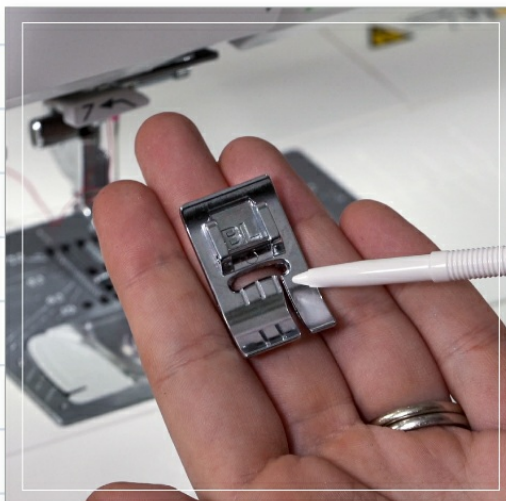


**Danielle  
Amato**

*Janome  
Educator*

**JANOME**

### Exploring ways to use the Bi-Level Foot



### Exploring Ways to Use the Bi-Level Foot

How many ways can you think of to use Janome's new Bi-Level Foot now available for 9mm and 7mm machines? Janome Educator Danielle Amato walks you through many uses of this foot which is higher on the left than the right. She'll talk about perfect top stitching, patch pockets, and attaching webbing to bags.

[Watch the Video](#)

There are so many ways to find projects you'll love at [Janome.com](#).

[Inspire](#)

[Blog](#)

[Search Bar](#)

**Local Fun**



### **Zozobra Now & Forever! (¡Zozobra Ahora y Siempre!)**

**Friday, January 19, 2:00pm - 4:00pm**

**Santa Fe Children's Museum**

**1050 Old Pecos Trail, Santa Fe, NM 87501, USA**

Make "Old Man Gloom" corn husk dolls to celebrate the 100th anniversary of The Burning of Zozobra in 2024.

[Learn More](#)

---

[Visit Our Website](#)

---

### **Safe Shopping at Sewing Center of Santa Fe**

**We remain diligent about keeping you and our staff healthy. Please stay home if you're not feeling well. Curbside service is always available.**

**STORE HOURS:**

**Mon - Sat 10 - 4**

**Closed Sun**

**505-424-3242**

Sewing Center of Santa Fe | 3014 Cielo Ct. Suite A, Santa Fe, NM 87507

[Unsubscribe info@sewingcenterofsantafe.com](mailto:info@sewingcenterofsantafe.com)

[Update Profile](#) | [Constant Contact Data Notice](#)

Sent by [info@sewingcenterofsantafe.com](mailto:info@sewingcenterofsantafe.com) powered by



Try email marketing for free today!

---