



# BABY LOCK SERGER FAMILY

Forever Change The Way You Serge

**baby lock**

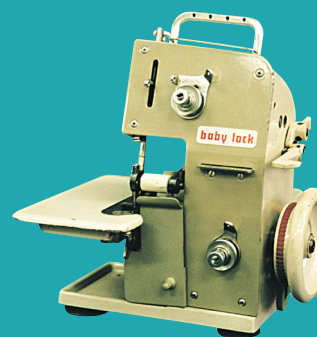
FOR THE LOVE OF SEWING





## THE HISTORY OF THE BABY LOCK SERGER

An employee in a Japanese factory saw his friend hemming trousers by hand and realized he could invent a better, easier and more efficient solution. He began developing a smaller, more convenient overlock serger – a “baby lock.” It worked, and it worked well -- ultimately revolutionizing the way garments are made.





# THE FOREMOST NAME IN HOME SERGING



A St. Louis based, family-owned company saw the benefit of this new machine and brought it to the United States. This new home serger was the first Baby Lock. It gave home sewers the opportunity to finish garments like a professional machine.



Over the years, Baby Lock has continued to revolutionize sergers. Today, Baby Lock has many patents to its name. Modern Baby Lock sergers have numerous innovative features, making them easy to use for all sorts of projects. RevolutionAir™ Threading, for instance, lets you thread your loopers and needles each with the touch of a button. And thanks to the Automatic Thread Delivery™ System, no tension knobs are needed. A balanced stitch is delivered on any fabric with any type of thread.



Impressive features aren't the only things you'll get with Baby Lock. The Baby Lock Retailer Network is dedicated to sewing enthusiasts like you. Plus, Baby Lock also offers a wealth of education and online sewing classes that continue to grow every day. With unsurpassed features and support, there truly is no substitute for a Baby Lock serger.





### REVOLUTIONAIR™ NEEDLE THREADING

Engage the RevolutionAir™ threader, push a button and the needles are threaded!

### REVOLUTIONAIR™ LOOPER THREADING

Insert thread into one of the threading ports, push the button and a gust of air quickly pushes it through the tubular loopers.



### EXTRAORDINAIR® AND JET-AIR™ THREADING

Baby Lock's ExtraordinAir® and Jet-Air™ Threading functions thread your loopers with just one touch.



### AUTOMATIC THREAD DELIVERY™ SYSTEM (ATD)

Your serger will automatically adjust how much thread is delivered as you go from one fabric to another, leaving balanced stitches. Plus, you can thread your loopers in any order!



## INNOVATIVE FEATURES

Baby Lock has been leading the sewing industry since the very beginning. From the first home serger to the Automatic Thread Delivery™ System (ATD) to RevolutionAir™ Threading, Baby Lock continues to develop technology that makes serging easy and will continue to evolve it for years to come... all for the love of sewing.



### VERTICAL NEEDLE PENETRATION

Baby Lock's needles are set to sew vertically by moving directly up and down. This helps you avoid deflection and reduce fabric damage.



### FULL-FEATURED DIFFERENTIAL FEED

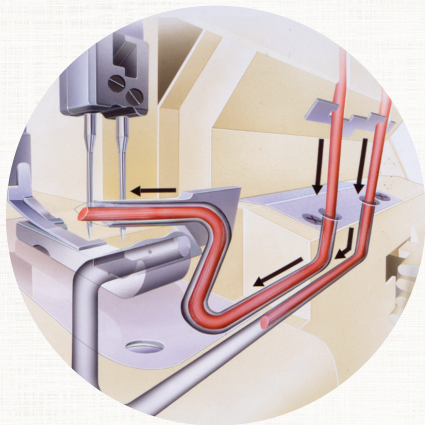
Gather with a 2:1 ratio on any fabric, even lightweight knits. Baby Lock has improved differential feed by adding a single unit feed dog mechanism.



### ADJUSTABLE STITCH LENGTH & AUTOMATIC ROLLED HEM DIAL

Adjust your stitch length with the turn of a dial. This dial includes a setting that retracts the built-in stitch finger for an automatic rolled hem.





### **TUBULAR LOOPERS**

No thread is exposed and there are no confusing thread guides.



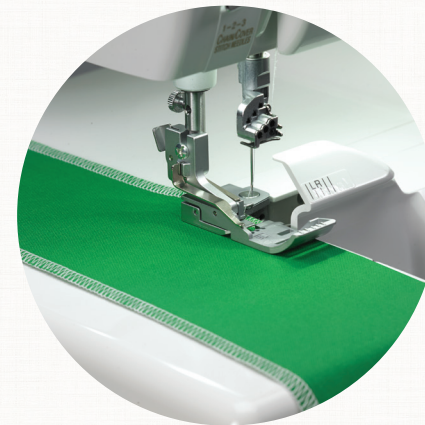
### **LOOPER DRIVE SYSTEM**

This system keeps the loopers aligned and in time.



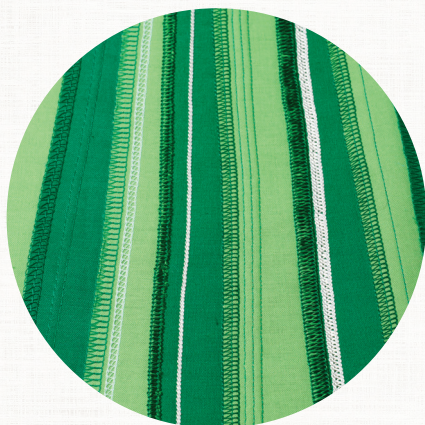
### **ADVANCED KNIFE DRIVING & ONE-WAY CLUTCH SYSTEMS**

Cut thicker fabrics with ease using the exclusive knife system with a larger cutting bite.



### **FABRIC SUPPORT SYSTEM**

Maintain flat, balanced stitches regardless of speed, fabric or stitch type you use. And you can adjust the seam allowance and cutting width simultaneously.



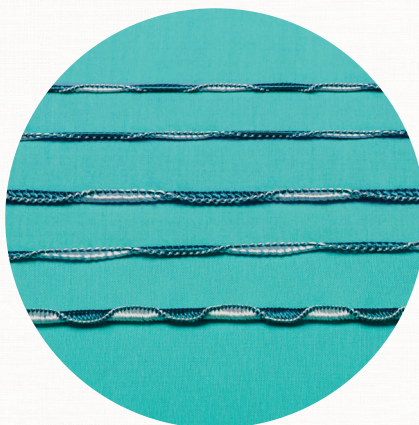
### **8/7/6 THREAD STITCH CAPACITY**

Enjoy more stitch combinations—87 total. This also lets Baby Lock combine overlocking and cover stitching in one machine.



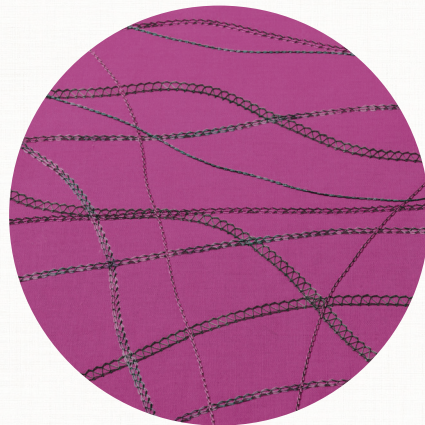
### **COVER STITCH CHAINING OFF**

Chain off the cover stitch and then start stitching on or off the fabric. It's also useful for creating decorative cords or trim.



### **THREAD DELIVERY UNIT FOR THE EXCLUSIVE WAVE STITCH**

The Thread Delivery Unit ensures that each beautiful Wave Stitch is even with the next.



### **CHAIN/COVER TENSION DISKS**

Save time by adjusting the thread for the chain, cover and triple cover stitch needles with just one dial.





Maypole Quilt Pattern designed by Suzy Williams. Available from Suzy's Quilts.

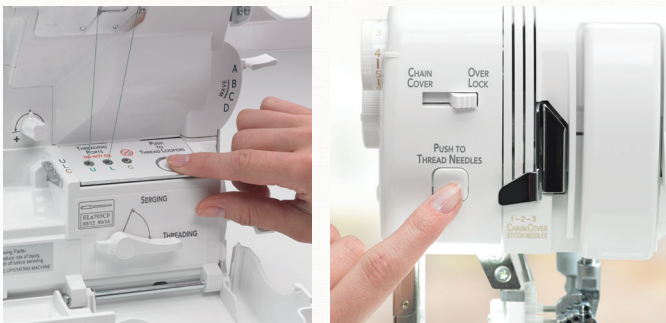


# TRIUMPH

The Triumph conquers serging in a way you never thought possible thanks to RevolutionAir™ Threading. Thread the loopers with just the touch of a button and then thread the needles automatically with the touch of another! You'll have more time to foster and focus on your creativity than worrying about setup.

## REVOLUTIONAIR THREADING

With Baby Lock's RevolutionAir Threading, a gust of air pushes the looper threads through the loopers, and then gentle suction pulls the thread through the eye of the needles. It's that easy!



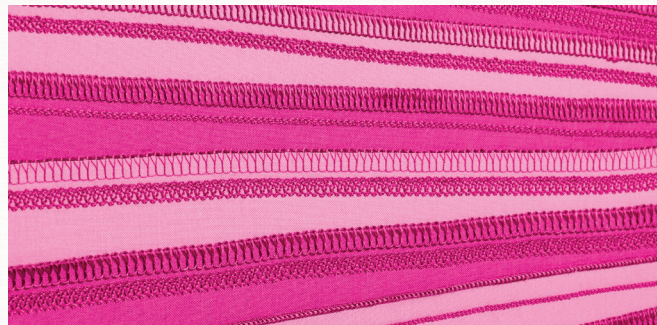
## LARGEST THROAT SPACE

Easily serge large projects with room to spare. You'll love adding decorative stitches to yards and yards of fabric.



## 8/7/6 STITCH THREAD CAPACITY PLUS EXCLUSIVE WAVE STITCH

With eight threads, the Triumph gives you 87 stitch combinations. Plus, you can combine overlocking and cover stitching in the same operation.



## AUTOMATIC THREAD DELIVERY™ (ATD)

Never worry about tension adjustments again. Enjoy perfectly balanced stitches regardless of the type of fabric you're using. And ATD lets you thread in any order.



## ADDITIONAL FEATURES

- Variable Speed Control
- Knee Lift
- Pure Lighting with Six LED Lights
- Convenient Presser Foot Lever
- Full-Featured Differential Feed
- Automatic Rolled Hem
- Looper Drive System
- Advanced Knife Driving and One-Way Clutch System
- Fabric Support System
- Chain/Cover Tension Disks
- Tubular Loopers
- Vertical Needle Penetration
- Inspiration Guide Available



## OPTIONAL ACCESSORIES

### Triumph Trolley (BLSTF2)

Protect your serger while on the go with this Baby Lock trolley bag.

### Triumph Foot Kit (BLETS8FTKIT)

Try new techniques. These 29 feet and attachments come in a canvas bag with dividers.

### Koala Serger Station

Furnish your sewing studio with fine Koala Studios sewing furniture. It's custom built in America just for your sewing room.

### Love of Sewing membership (LOSML1)

Four years of unlimited access to sewing tutorials, comprehensive service and unique savings opportunities.







# ACCOLADE

Bring a new sense of creative capability to your serging with the Baby Lock Accolade. Combine chain and overlock stitches to form up to eight-thread stitches. ExtraordinAir® threading takes your thread through all three loopers at once, instantly, with a gust of air. Plus, Accolade's new presser foot features a 6 mm height that makes serging on thicker fabrics a breeze!

## EXTRAORDINAIR THREADING

With just a gust of air, ExtraordinAir takes thread through all the loopers instantly. Threading has never been this fast, easy or extraordinary.



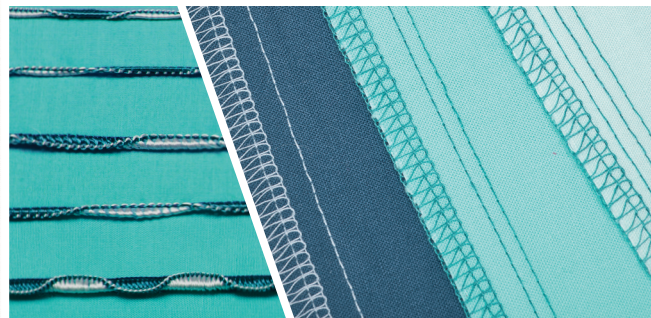
## AUTOMATIC THREAD DELIVERY™ (ATD)

Thread in any order for a balanced stitch every time. ATD controls the tension of threads, even on the sheerest fabrics.



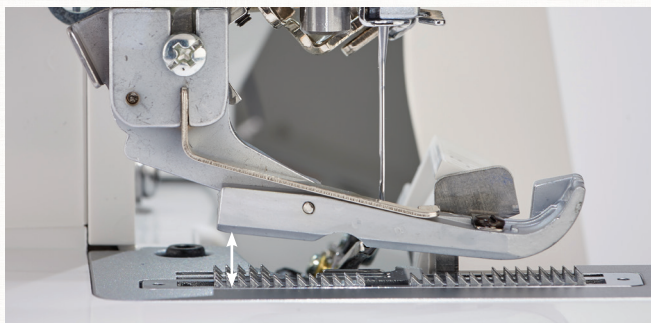
## 8/7/6 STITCH THREAD CAPACITY PLUS EXCLUSIVE WAVE STITCH

With eight threads, the Accolade gives you 87 stitch combinations. Plus, you can combine overlocking and cover stitching to give you two machines in one!



## ADJUSTABLE PRESSER FOOT HEIGHT UP TO 6MM

Accolade features a higher presser foot height to effortlessly handle thicker and loftier fabric.



## ADDITIONAL FEATURES

- Pure Lighting with 3 LED Lights
- Full-Featured Differential Feed
- Automatic Rolled Hem
- Looper Drive System
- Fabric Support System
- Advanced Knife Driving and One-Way Clutch System
- Vertical Needle Penetration
- Tubular Loopers
- Chain/Cover Discs
- Inspiration Guide Available



## OPTIONAL ACCESSORIES

### 16 Piece Serger Accessory Foot Kit (BLE8FTKIT)

Helpful accessory feet in a convenient canvas bag.

### Trim Bin (BLTBIN)

Catches fabric scraps as you serge.

### Madeira Aerolock Premium Serger Thread

These threads run smoothly in your serger.

### Trolley Bag (BLSTF)

Safely bring your serger to classes and on the road in this durable serger trolley bag.







# ACCLAIM

The Baby Lock Acclaim features RevolutionAir™ Threading that threads the loopers with just the touch of a button and then threads the needles with the touch of another. You'll also serge tension-free with the Automatic Thread Delivery™ System (ATD), and the exclusive Wave Stitch will expand your creative options even further.

## REVOLUTIONAIR THREADING

With Baby Lock's RevolutionAir Threading, a gust of air pushes the looper threads through the loopers, and then gentle suction pulls the thread through the eye of the needles. It's that easy!



## 4/3/2 THREAD SERGING

No matter what type of stitch your project calls for, you can always find the right thread option.



## WIDER WORKSPACE - 2" TO THE RIGHT OF THE NEEDLE

Easily serge larger projects with room to spare. You'll love adding decorative stitching to yards and yards of fabric.



## AUTOMATIC THREAD DELIVERY (ATD)

Set the Acclaim to the type of stitch you want and serge. The Acclaim will deliver a balanced stitch on any fabric with any type of thread. It even goes from one fabric type to another without skipping.



## ADDITIONAL FEATURES

- Advanced Knife Driving and One-Way Clutch System
- Pure Lighting with 3 LED Lights
- Full-Featured Differential Feed
- Built-in Needle Threader
- Automatic Rolled Hem
- Looper Drive System
- Fabric Support System
- Tubular Loopers
- Vertical Needle Penetration
- Inspiration Guide Available



## OPTIONAL ACCESSORIES

### 10 Piece Serger Accessory

#### Foot Kit (BLES4FTKIT)

Helpful serger accessories in a convenient canvas bag.

### Madeira Glamour Serger Thread

These metallic threads run smoothly in your serger.

### Trim Bin (BLTBIN)

This helpful bin keeps your sewing area tidy by catching cut fibers as you serge. Fits all Baby Lock serger models.

### Trolley Bag (BLSTF)

Safely bring your serger to classes and on the road in this durable serger trolley bag.







# VICTORY

Ready to declare victory over threading your serger? Look no further than the Baby Lock Victory. This advanced home serger includes Jet-Air Threading™, which threads the lower loopers with the touch of a lever and Automatic Thread Delivery™ to thread in any order. Plus, Victory's new presser foot features a 6mm height that makes serging on thicker fabrics a breeze!

## JET-AIR THREADING

With just the touch of a lever, thread is sent through the tubular loopers. There are no thread guides, no struggling, and there's plenty of time to serge away!



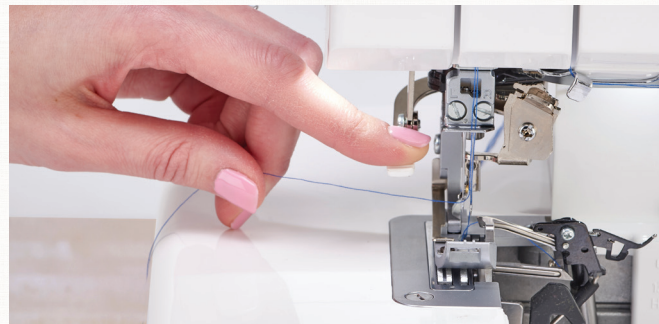
## AUTOMATIC THREAD DELIVERY (ATD)

Set the Victory to the type of stitch you want and get started! The Victory delivers a balanced stitch on any fabric with any type of thread.



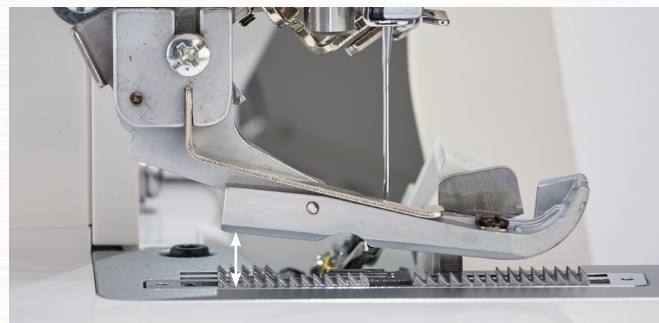
## NEEDLE THREADING SYSTEM

Hold the needle threader in place for quick and easy threading with just the touch of a lever.



## ADJUSTABLE PRESSER FOOT HEIGHT UP TO 6MM

Victory features a higher presser foot height to effortlessly handle thicker and loftier fabric.



## ADDITIONAL FEATURES

- Pure Lighting with 2 LED Lights
- 4/3/2 Thread Serging
- Full-Featured Differential Feed
- Automatic Rolled Hem
- Looper Drive System
- Fabric Support System
- Advanced Knife Driving and One-Way Clutch System
- Vertical Needle Penetration
- Tubular Loopers
- Inspiration Guide Available



## OPTIONAL ACCESSORIES

### 10 Piece Serger Accessory Foot Kit (BLES4FTKIT)

Helpful serger accessories in a convenient canvas bag.

### Trolley Bag (BLSTF)

Protect your serger while on the go.

### Trim Bin (BLTBIN)

This helpful bin keeps your sewing area tidy by catching cut fibers as you serge. Fits all baby lock serger models.

### Klassé Needles

Designed for durability, even at high sewing speeds.







# CELEBRATE

The easy-to-use Celebrate includes adjustable manual tensions, allowing for perfect stitches on any type of fabric. Jet-Air Threading™ threads your machine with the touch of a lever. Plus, Celebrate's presser foot features a 6mm height that makes serging on thicker fabrics a breeze!

## JET-AIR THREADING

With just the touch of a lever, thread is sent through the tubular loopers. There are no thread guides, no struggling, and there's plenty of time to serge away!



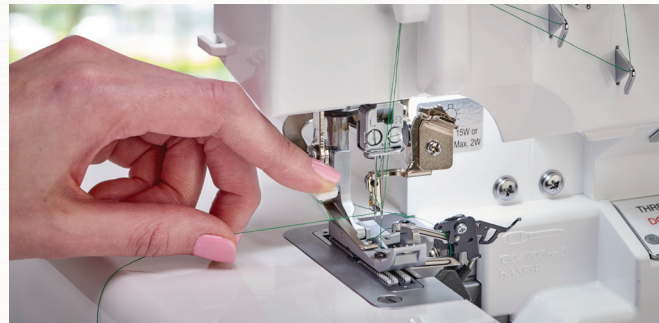
## MICROMATIC TWIN CAM TENSION SYSTEM

Eliminates thread tangles and delivers proper tension with all threads on any fabric.



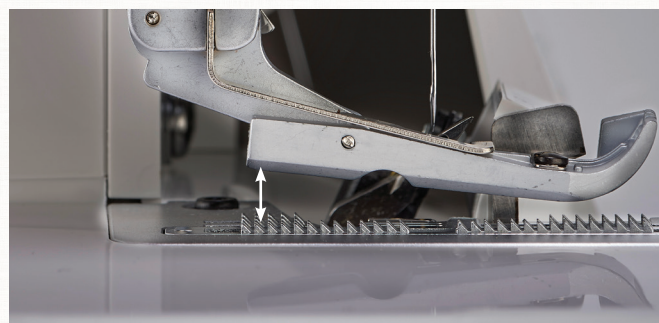
## NEEDLE THREADING SYSTEM

Hold the needle threader in place for quick and easy threading with just the touch of a lever.



## ADJUSTABLE PRESSER FOOT HEIGHT UP TO 6MM

Celebrate features a higher presser foot height to effortlessly handle thicker and loftier fabric.



## ADDITIONAL FEATURES

- Full-Featured Differential Feed
- Tubular Loopers
- 4/3/2 Thread Serging
- Advanced Knife Driving and One-Way Clutch System
- Automatic Rolled Hem
- Fabric Support System
- Vertical Needle Penetration
- Looper Drive System
- Pure Lighting with 1 LED light



## OPTIONAL ACCESSORIES

### 10 Piece Serger Accessory Foot Kit (BLES4FTKIT)

Helpful serger accessories in a convenient canvas bag.

### Trim Bin (BLTBIN)

This helpful bin keeps your sewing area tidy by catching cut fibers as you serge. Fits all baby lock serger models.

### Madeira Aerolock Premium Serger Thread

These threads run smoothly in your serger.

### Trolley Bag (BLSTF)

Safely bring your serger to classes and on the road in this durable serger trolley bag.





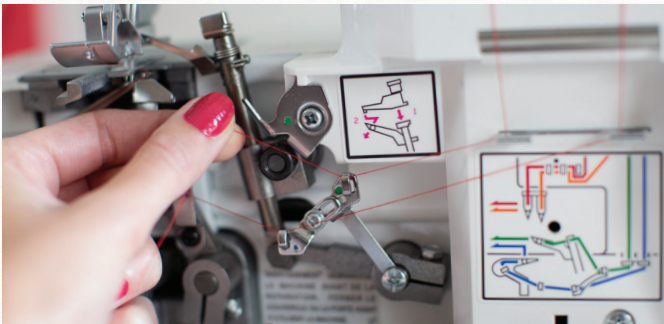


# VIBRANT

This is it: the place where serging begins, and it leads you and your sewing skills to a dynamic future. Vibrant is the perfect introduction to the art and craft of serging, especially for garment sewers who want truly finished edges. With Vibrant, serging isn't scary – it's genuinely exciting!

## EASY COLOR-CODED THREADING

New to serging? Don't be afraid! Following Vibrant's easily accessible color-coded threading system, you'll have your serger threaded in no time at all!



## RETRACTABLE THREAD CUTTER WITH PUSH LEVER

Forget fumbling with scissors, Vibrant features a thread cutter that pops up with just a quick push.



## 4/3/2 STITCH THREAD CAPACITY

Finish all your projects with quality and versatility — easily switch from 4-thread, 3-thread, 2-thread and rolled hemming for a different look and finish every time.



## DIFFERENTIAL FEED

Want to add gathers to your next project? Vibrant's differential feed allows you to increase or decrease the fullness in the fabric, making sewing easier on tricky fabrics.



## ADDITIONAL FEATURES

- Lay-In Tension System
- Snap-On Accessory Feet
- Built-In LED Light
- Electronic Foot Control
- Trim Bin
- Removable Stitch Finger



## OPTIONAL ACCESSORIES

### 6 Piece Serger Foot Kit (BL460B-FEET)

Includes 0.5mm Blindhem Foot, 1mm Blindhem Foot, Cording Foot, Elastic Foot, Beading Foot and Ruffling Foot.

### Beginning Serger Kit (BLGCSGK)

Get serging with all the beginning essentials you need in the Genuine Collection Serger Kit.

### Vibrant Luggage Tag (BLLT-VIBRANT)

Show off your Genuine side with a cute luggage tag to match your machine.







# EUPHORIA

The Baby Lock Euphoria cover stitch machine is the perfect complement to your Baby Lock four-thread serger or sewing machine. It creates professional finishes for all your garments, is perfect for active knitwear and even home décor projects. Choose from a triple, wide or narrow cover stitch or chain stitch and easily finish your projects made from even the trickiest fabrics.

## EXTRAORDIN-AIR® THREADING

With just a gust of air, ExtraordinAir instantly takes thread through the looper. Threading has never been this fast, easy or extraordinary!



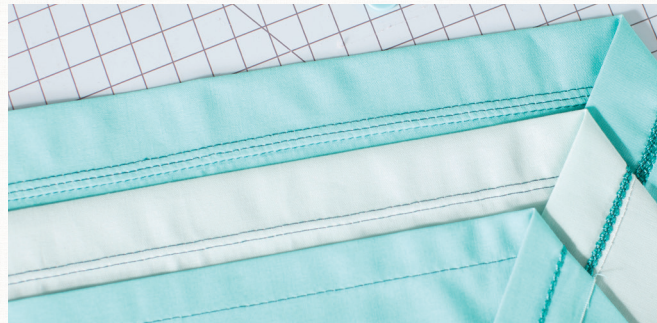
## AUTOMATIC THREAD DELIVERY (ATD™) SYSTEM

Set the Euphoria to the type of stitch you want and get started! The Euphoria delivers a balanced stitch on any fabric with any type of thread.



## CHAIN AND COVER STITCHES

Use a single chain, triple cover stitch, or choose between different widths to create a narrow or wide cover stitch – great for hems, belt loops and more!



## LARGE 5" THROAT SPACE

Easily stitch on large projects and use optional attachments with room to spare.



## ADDITIONAL FEATURES

- Drop Feed when Presser Foot is Raised
- Auto Tension Release
- Tubular Chain Looper
- 3 Position Hook System for Threading Needles
- Knee Lift
- Pure Lighting with Three LED Lights
- Convenient Presser Foot Lifter
- Full-Featured Differential Feed



## OPTIONAL ACCESSORIES

### Madeira Aerolock Premium Serger Thread

Durable thread for every project.

### 10 Piece Accessory Kit (BLC4FTKIT)

Helpful feet and accessories in a convenient carry bag.

### Klassé Needles

Designed for durability, even at high sewing speeds.



# SERGER FEATURES GUIDE – WHICH SERGER IS RIGHT FOR YOU?

FEATURE	Baby Lock	Machine A	Machine B
<b>Looper Threading</b>			
Are any special tools or skills required to thread the loopers?			
Can the loopers be threaded in any order?			
<b>Needle Threading</b>			
Is there a built-in needle threader?			
<b>Tension Settings</b>			
Does the serger need special settings to use specialty or decorative threads?			
<b>Abilities on Varied Fabrics (Fabric Support, Needle Penetration and Knife Cutting Performance)</b>			
Can the machine knife easily cut several layers of polar fleece?			
On denim and home décor weight fabrics, is the cutting action clean and doesn't bog down?			
Can the machine adjust and stitch with ease on different types of fabrics like silk chiffon to four layers of denim?			
<b>Differential Feed</b>			
Can the serger create a full 2 to 1 ratio for gathering fabrics for endless yards of ruffles?			
<b>Adjustable Stitch Width</b>			
Is it easy to adjust for a wider or narrower stitch?			
<b>Stitch Type Conversion</b>			
Can you convert from standard overlock stitches to a narrow rolled hem by turning a dial?			
<b>Accessory Feet or Attachments Available</b>			
How many optional accessories are available?			
<b>Optional Service Plan (Gold Standard Comprehensive Care Program)</b>			
Will you receive superior customer service and support after you get the machine home?			
<b>Reference Materials (Inspirational Guides)</b>			
Are additional reference materials available to enhance your serger experience with new techniques?			




# SERGER COMPARISON CHART

SERGERS							
	<b>Triumph</b> (BLETS8)	<b>Accolade</b> (BLS8)	<b>Euphoria</b> (BLC4)	<b>Acclaim</b> (BLES4)	<b>Victory</b> (BLS3)	<b>Celebrate</b> (BLS1)	<b>Vibrant</b> (BL460B)
Tension System	Automatic Thread Delivery (ATD)	Automatic Thread Delivery (ATD)	Automatic Thread Delivery (ATD)	Automatic Thread Delivery (ATD)	Automatic Thread Delivery (ATD)	Twin Cam Micromatic	Tension Disc
Looper Threading	RevolutionAir	ExtraordinAir	ExtraordinAir	RevolutionAir	Jet-Air	Jet-Air	Color Coded
Max # of Threads	8	8	4	4	4	4	4
Cover Stitch	Yes-up to triple needle	Yes-up to triple needle	Yes-up to triple needle	N/A	N/A	N/A	N/A
Differential Feed	Full-Featured	Full-Featured	Full-Featured	Full-Featured	Full-Featured	Full-Featured	Standard
Stitch Length in mm	0.75-4.0	0.75-4.0	1.0-4.0	0.75-4.0	0.75-4.0	0.75-4.0	1.0-4.0
Stitch Width in mm	1.5-7.5; 16 on Expressive stitches	1.5-7.5; 16 on Expressive stitches	3.0 or 6.0	1.5-7.5	1.5-7.5	1.5-7.5	2.0-7.2
Lighting	Pure Lighting with 6 LED lights	Pure Lighting with 3 LED lights	Pure Lighting with 3 LED lights	Pure Lighting with 3 LED lights	Pure Lighting with 2 LED lights	Pure Lighting with 1 LED light	Standard
Built-in Accessory Storage	Yes	Yes	Yes	Yes	Yes	Yes	Case included
2-Thread Overlock Conversion	Built-in	Built-in	N/A	Built-in	Built-in	Built-in	Included accessory
Rolled Hem	Built-in	Built-in	N/A	Built-in	Built-in	Built-in	Removeable stitch finger
Thread Cutter	Built-in	Built-in	Built-in	Built-in	Built-in	Built-in	Built-in
Other Exclusive Features	87 stitches including Exclusive Wave Stitch	87 stitches including Exclusive Wave Stitch	-	Wave Stitch	-	-	-
Needle System	ELx705CF	ELx705CF	ELx705CF	ELx705CF	ELx705CF	ELx705CF	ELx705CF
Electronic Drive System	Yes	Yes	Yes	Yes	Yes	Yes	-
Weight	28.6 Pounds	20.9 Pounds	25.6 Pounds	24.7 Pounds	16.7 Pounds	16.5 Pounds	19.8 Pounds
Warranty	25 yrs. limited, 10 yrs. parts, 5 yrs. electrical, 1 yr. labor						25 yrs. limited, 10 yrs. parts, 2 yrs electrical, 1 yr. labor
Feet Included	1	1	1	1	1	1	1
Optional Feet	Foot kit available	Foot kit available	Foot kit available	Foot kit available	Foot kit available	Foot kit available	Foot kit available
Love of Sewing	Yes	Yes	-	Yes	Yes	Yes	-
Available Inspirational Guide	Yes	Yes	-	Yes	Yes	-	-



## SERGER OPTIONAL ATTACHMENT FEET

Sergers							
	<b>Triumph</b> (BLETS8)	<b>Accolade</b> (BLS8)	<b>Euphoria</b> (BLC4)	<b>Acclaim</b> (BLES4)	<b>Victory</b> (BLS3)	<b>Celebrate</b> (BLS1)	<b>Vibrant</b> (BL460B)
Beading Foot	BLE8-BF	BLE8-BF	–	BLE-BF	BLE-BF	BLE-BF	BL460B-BF
Belt Loop Binder	3/4": BLE8-S12 1-1/2": BLE8-S11	3/4": BLE8-S12 1-1/2": BLE8-S11	3/4": BLE8-S12 1-1/2": BLE8-S11	–	–	–	–
Blindhem Foot	BLE8-BLHF	BLE8-BLHF	–	BLE-BLHFS	BLE-BLHFS	BLE-BLHFS	BL406B-BLHF1 BL406B-BLHF5
Clear Foot	BLE8-CLF	BLE8-CLF	BLCS-CLF	BLE3ATW-CLF	BLE3ATW-CLF	BLE3ATW-CLF	–
Cording Foot	BLE8-CF	BLE8-CF	–	3mm: BLE-CF3 5mm: BLE-CF5	3mm: BLE-CF3 5mm: BLE-CF5	3mm: BLE-CF3 5mm: BLE-CF5	BL406B-CF
Cover/Chain Stitch Foot	BLE8-CCF	BLE8-CCF	–	–	–	–	–
Clear Curve Foot	BLE8-CLVF	BLE8-CLVF	–	–	–	–	–
Curve Foot	BLE8-CVF	BLE8-CVF	–	–	–	–	–
Double Fold Bias Binder	28mm: BLE8-S3 36mm: BLE8-S2  Knit/Woven: 8mm: BLCS-DFBB8 10mm: BLCS-DFBB10 15mm: BLCS-DFBB15	28mm: BLE8-S3 36mm: BLE8-S2	28mm: BLE8-S3 36mm: BLE8-S2  Knit/Woven: 8mm: BLCS-DFBB8 10mm: BLCS-DFBB10 15mm: BLCS-DFBB15	–	–	–	–
Elastic Foot	BLE8-EF	BLE8-EF	–	BLE-EF	BLE-EF	BLE-EF	BL406B-EF
Fabric Guide	BLES8-FG	BLE8-FG	BLES8-FG	–	–	–	–
Flat Sole Foot	BLE8-TF	BLE8-TF	–	BLE3ATW-FSF	BLE3ATW-FSF	BLE3ATW-FSF	–
Lace Applicator	BLE8-LF	BLE8-LF	–	BLE-LF	BLE-LF	BLE-LF	–
Pintuck Foot with Guides	BLE8-PTF	BLE8-PTF	BLCS-PTF	–	–	–	–
Plain Hemmer	1/4": BLE8-S7 1/2": BLE8-S6	1/4": BLE8-S7 1/2": BLE8-S6	1/4": BLE8-S7 1/2": BLE8-S6	–	–	–	–
Ruffling Foot	BLE8-RF	BLE8-RF	–	BLE-RF	BLE-RF	BLE-RF	BL406B-RF
Shirring Foot	BLE8-SF	BLE8-SF	–	–	–	–	–
Single Downturn Feller	1/4": BLE8-S10 5/8": BLE8-S8 1": BLE8-S9	1/4": BLE8-S10 5/8": BLE8-S8 1": BLE8-S9	1/4": BLE8-S10 5/8": BLE8-S8 1": BLE8-S9	–	–	–	–
Single Fold Bias Binder	28mm: BLE8-S4 40mm: BLE8-S5 Knit/woven 15mm: BLES8-SFBIS	28mm: BLE8-S4 40mm: BLE8-S5	28mm: BLE8-S4 40mm: BLE8-S5 Knit/woven 15mm: BLES8-SFB15	–	–	–	–



# THE BABY LOCK RETAILER EXPERIENCE

There's always something exciting to learn, to experience, or to be inspired by when you own a Baby Lock product. But what inspires us? To put it simply—you.



Baby Lock and our independent retailer network are committed to sewers like you. Together, we provide the highest quality products and services not available through mass retailers, and we can meet your sewing needs better than anyone else.



Whether you're looking for product information or a recommendation on your next machine, you can count on your Baby Lock retailer to help you choose the sewing machines that best fit your needs. Well-trained on the Baby Lock line, they're your friendly, trusted advisor—someone who will guide you through the features and innovations that make sewing so much fun.



When we have problems with our car, many of us turn to a mechanic. Well, think of your Baby Lock retailer as the expert you rely on for another very important machine— your Baby Lock! They'll always go the extra mile for you.



## Why Shop Small?

By choosing a Baby Lock retailer for your sewing needs, you not only enjoy a more distinctive personal experience, but you're also helping build a community. Stop by your local authorized Baby Lock Retailer and get to know them. They'll be happy to share all the wonderful Baby Lock products that will bring your love of sewing to life.





**FOR THE LOVE OF SEWING**

[www.babylock.com](http://www.babylock.com)