

Free Download DOUBLE WEDDING RING PILLOW PROJECT

- A great start to get to know the Quiltsmart EASY Double Wedding Ring!
- Makes a great gift, too! Also could be made as a table mat!
- Perfect compliment for your Double Wedding Ring bed quilt!
- Learn our Pieced Arc method & our Single Arc method in one project!



A great pattern to showcase embroidery or quilting!

Yardage & Cutting

Approx finished size:
22" square

You will need:

- (1) Double Wedding Ring "Instructions Only".
- 1 Double Wedding Ring Interfacing Panel

Fabric:

Background:

5/8 yard (or exactly 1/2 yd)

Cut (1) 12" square

(4) 6" x 12" rect.

(4) 6" x 6" squares

Solid Fabric Arcs:

(1) 10" square.

Wedges:

(6) 2.5" strips (or more for more variety) to yield 24 wedges.

Jewels (Intersections):

(1) 2.5" strip (or a variety of fabrics) cut into (12) 2.5" squares.

Backing:

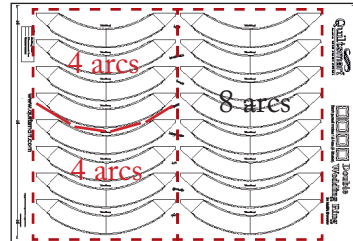
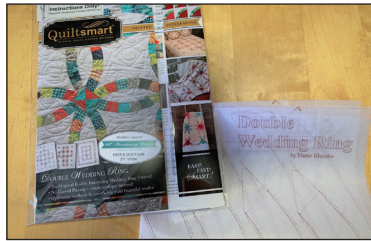
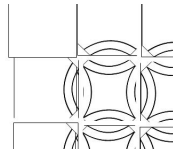
(2) pieces 22" x 28", fold in half to equal (2) pieces 14" x 22".

Optional Batting:

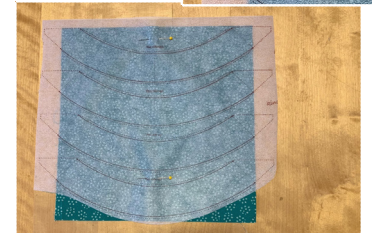
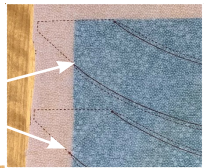
28" square

Optional Binding:

Cut (2-3) 2 1/2" strips



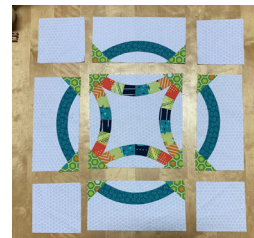
dots



1 You will need the Double Wedding Ring "Instructions Only" and 1 panel of Quiltsmart Double Wedding Ring printed interfacing. This project is basically like making a corner of your quilt (illustration above). Follow Yardage & Cutting chart to the left to cut your fabrics.

2 Cut the interfacing panel into 2 sections, each with 8 arcs. You will need 8 arcs for the pillow. Cut one of the sections of 8 into 2 sections of 4.

3 Center one of the interfacing arc sections over the 10" fabric square, keeping the dots right at the raw edge of the square, and the top wing dashed line even with the top edge of the fabric. Place *Rough* side of interfacing to *Right* side of fabric - "This side up." Pin. The "wings" (placement guides for later) will go over the edge of the fabric. Do not fuse yet! Set aside.



4 Following Steps 1-9 in the "Instructions Only", make 4 pieced arcs using the paper template provided in the Instructions OR the Quiltsmart Acrylic template which you can find at your local quilt shop or quiltsmart.com.

5 Follow Steps 10 - 18 of the "Instructions Only", using same instructions for stitching, trimming, turning, fusing, and zigzagging for the pieced arcs and single fabric arcs (that you placed on the 10" square above). The single fabric arcs will be stitched on all the solid lines from dot to dot, then trimmed. You can place either the pieced arcs or the single fabric arcs in the 12" center block and the other on the rectangles.

6 Sew together following Step 19 in instructions. If you want to quilt your pillow top, do that now. Trim to 22" or smaller. Fold each back piece in half, and overlap & baste to equal your pillow size. Center envelope back right sides together with block. Pin. From the smaller side, stitch around edge with a 1/2" seam allowance. Turn through back, press (topstitch if desired) & enjoy! *Alternate: Bind in a traditional manner.*