

Silvia's Sonnet

by Silvia Vassileva



Silvia's Sonnet

Walk Through the Garden quilt by Heidi Pridemore
featuring the *Silvia's Sonnet* collection by Silvia Vassileva
for P&B Textiles • Quilt Size: 58" x 70"

Yardage

Fabric A	SIL2 771 T	5/8 yard
Fabric B	SUEM 300 BG*	3/8 yard
Fabric C	SUED 300 E**	2 yards
Fabric D	SIL2 772 T	3/4 yard
Fabric E	SIL2 771 Z	1/2 yard
Fabric F	SUED 300 X**	1/4 yard
Fabric G	SIL2 774 M	1/2 yard
Fabric H	SIL2 772 I	3/4 yard
Fabric I	SIL2 773 Z	5/8 yard
Fabric J	SIL2 775 T	5/8 yard
Fabric K	SIL2 777 MU	5/8 yard
Backing	Any SIL2 fabric	3 3/4 yards

* from the *Suede Midtones* collection

** from the *Suede* collection

Cutting

From fabric A (SIL2 771 T), cut:

- (2) 8 1/2" x 42" strips; cut into (5) 8 1/2" squares

From fabric B (SUEM 300 BG), cut:

- (2) 4 1/2" x 42" strips; cut into (10) 4 1/2" squares

From fabric C (SUED 300 E), cut:

- (1) 8 1/2" x 42" strip; cut into (20) 1 1/2" x 8 1/2" strips
- (1) 9 1/2" x 42" strip; cut into (20) 1 1/2" x 9 1/2" strips
- (1) 11 1/2" x 42" strip; cut into (20) 1 1/2" x 11 1/2" strips
- (1) 12 1/2" x 42" strip; cut into (20) 1 1/2" x 12 1/2" strips
- (6) 3 1/2" x 42" strips. Piece the strips and cut
(2) 3 1/2" x 60 1/2" strips and (2) 3 1/2" x 54 1/2" strips

From fabric D (SIL2 772 T), cut:

- (1) 9 1/2" x 42" strip; cut into (10) 2 1/2" x 9 1/2" strips
- (1) 11 1/2" x 42" strip; cut into (10) 2 1/2" x 11 1/2" strips

From fabric E (SIL2 771 Z), cut:

- (2) 6 1/2" x 42" strips; cut into (10) 6 1/2" squares

From fabric F (SUED 300 X), cut:

- (1) 3 1/2" x 42" strip; cut into (10) 3 1/2" squares

From fabric G (SIL2 774 M), cut:

- (1) 6 1/2" x 42" strip; cut into (10) 2 1/2" x 6 1/2" strips
- (1) 8 1/2" x 42" strip; cut into (10) 2 1/2" x 8 1/2" strips

From fabric H (SIL2 772 I), cut:

- (1) 9 1/2" x 42" strip; cut into (10) 2 1/2" x 9 1/2" strips
- (1) 11 1/2" x 42" strip; cut into (10) 2 1/2" x 11 1/2" strips

From fabric I (SIL2 773 Z), cut:

- (7) 2 1/2" x 42" strips. Piece the strips and cut
(2) 2 1/2" x 66 1/2" strips and (2) 2 1/2" x 58 1/2" strips

From fabric J (SIL2 775 T), cut:

- (7) 2 1/2" x 42" binding strips

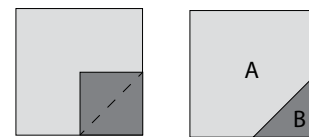
From fabric K (SIL2 777 MU), cut:

- (2) 8 1/2" x 42" strips; cut into (5) 8 1/2" squares

Block One Assembly

Refer to the photo and the diagram after step 4 for placement guidance as needed.

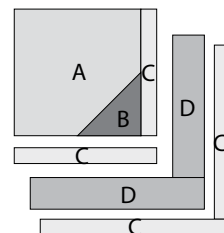
1. Draw a diagonal line from corner to corner on the wrong side of each fabric B square. Place a marked square on one corner of a fabric A square, right sides together. Sew along the marked line and trim away the corner fabric, leaving a 1/4" seam allowance. Press the seam allowances toward the resulting triangle. Make a total of five units.



2. Sew a fabric C 1 1/2" x 8 1/2" strip to the right side of each unit from step 1. Sew a fabric C 1 1/2" x 9 1/2" strip to the bottom of each unit.

3. Sew a fabric D 2 1/2" x 9 1/2" strip to the right side of each unit from step 2. Sew a fabric D 2 1/2" x 11 1/2" strip to the bottom of each unit.

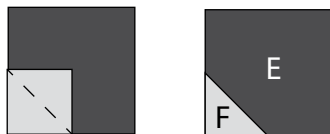
4. Sew a fabric C 1 1/2" x 11 1/2" strip to the right side of each unit from step 3. Sew a fabric C 1 1/2" x 12 1/2" strip to the bottom of each unit to make five of Block One.



Block Two Assembly

Refer to the photo and the diagram after step 9 for placement guidance as needed.

5. Repeat step 1, using the fabric F squares and fabric E squares to make a total of 10 units.

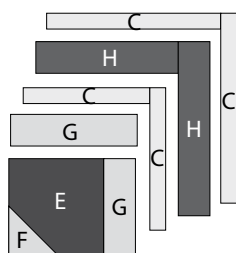


6. Sew a fabric G $2\frac{1}{2}$ " x $6\frac{1}{2}$ " strip to the right side of each unit from step 5. Sew a fabric G $2\frac{1}{2}$ " x $8\frac{1}{2}$ " strip to the top of each unit.

7. Sew a fabric C $1\frac{1}{2}$ " x $8\frac{1}{2}$ " strip to the right side of each unit from step 6. Sew a fabric C $1\frac{1}{2}$ " x $9\frac{1}{2}$ " strip to the top of each unit.

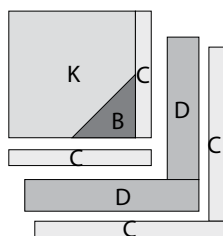
8. Sew a fabric H $2\frac{1}{2}$ " x $9\frac{1}{2}$ " strip to the right side of each unit from step 7. Sew a fabric H $2\frac{1}{2}$ " x $11\frac{1}{2}$ " strip to the top of each unit.

9. Sew a fabric C $1\frac{1}{2}$ " x $11\frac{1}{2}$ " strip to the right side of each unit from step 8. Sew a fabric C $1\frac{1}{2}$ " x $12\frac{1}{2}$ " strip to the top of each unit to make 10 of Block Two.



Block Three Assembly

10. Repeat steps 1–4 using the fabric K squares instead of the fabric A squares to make five of Block Three.



Quilt Assembly

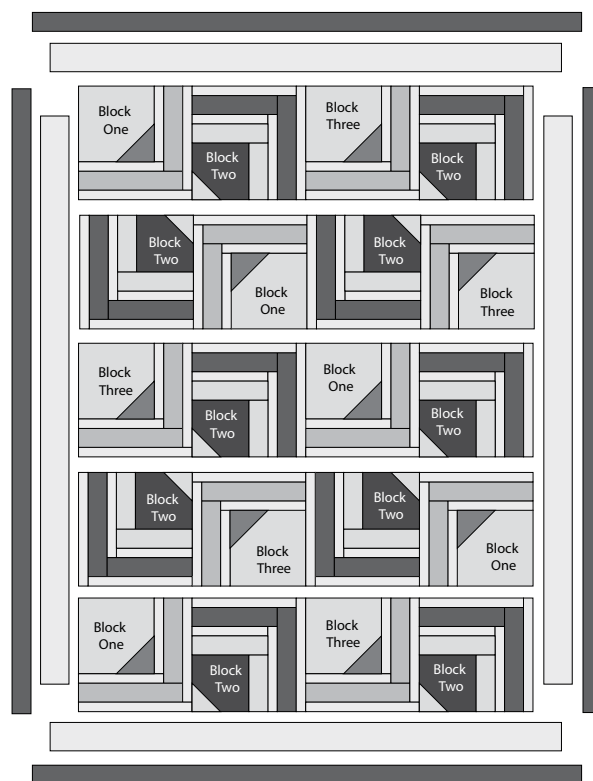
Refer to the photo and quilt layout diagram as needed for placement guidance.

11. Lay out the blocks in five rows of four blocks each, alternating and rotating the blocks in each row and from row to row as shown. Join the blocks into rows; join the rows. The quilt top should measure $48\frac{1}{2}$ " x $60\frac{1}{2}$ ".

12. Sew fabric C $60\frac{1}{2}$ "-long strips to opposite sides of the quilt top. Sew fabric C $54\frac{1}{2}$ "-long strips to the top and bottom of the quilt top.

13. Sew fabric I $66\frac{1}{2}$ "-long strips to opposite sides of the quilt top. Sew fabric I $58\frac{1}{2}$ "-long strips to the top and bottom of the quilt top.

14. Layer the quilt top with batting and backing; baste. Quilt as desired. Using the fabric J strips, bind the edges to finish.



QUILT ASSEMBLY DIAGRAM

Silvia's Sonnet

Fabric Collection by **Silvia Vassileva**



SIL2 771 T



SIL2 771 Z



SIL2 772 I



SIL2 772 T



SIL2 777 MU



SIL2 773 T



SIL2 773 Z



SIL2 774 AU



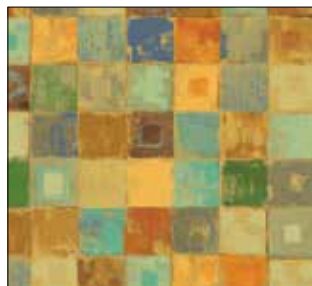
SIL2 774 M



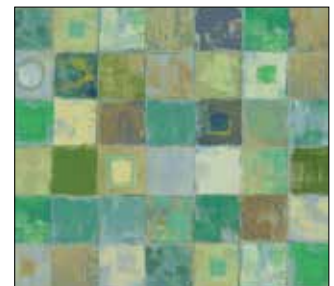
SIL2 775 I



SIL2 775 T



SIL2 776 AU



SIL2 776 T



P&B Textiles ♦ www.pbtex.com ♦ 800-351-9087

45-47 Washington St., Pawtucket, RI 02860 ♦ 237 W. 35th St., 11th floor, New York, NY 10001

▲ 100% cotton ♦ Cold wash & dry ♦ 43" / 44" ♦ Colors may vary due to printing process

All fabrics shown at 25% scale.