

Churn Dash – 6 ½" x 6 ½" unfinished

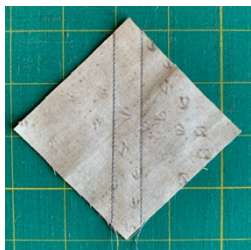


1. Cut fabric as directed.

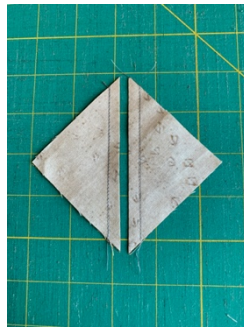
Background: 2 – 3" x 3" squares – **A1**
1 – 1 ½" x 12" strip – **A2**
1 – 2 ½" x 2 ½" square – **A3**
Contrast: 2 – 3" x 3" squares – **B1**
~~1 – 2 ½" x 12" strip – **B2**~~
1 – 1 ½" x 12" strip – **B2**

2. Half Square Triangles....AGAIN!!! I know you are getting so good at these now! On the wrong side of the **A1** squares mark a line ¼" away from both sides of one diagonal. Match each **A1** with a **B1** and stitch on, or just inside the marked lines. Cut between the diagonals and press toward the darker fabric. This will yield four HST.

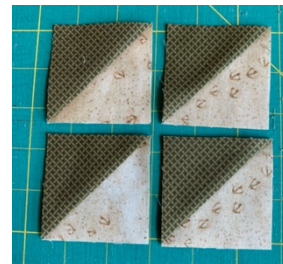
Mark and Stitch



Cut

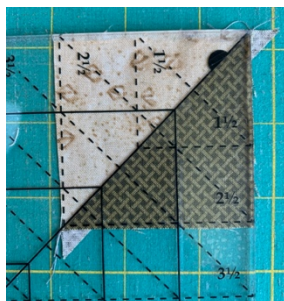


Press

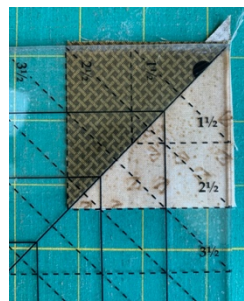


3. Trim all four HST's to 2 ½" x 2 ½". I used my Tucker Trimmer 1, but use whatever tool makes you happy! 😊

First Trim



Second Trim



4. Gather the **A2** and the **B2** strips and stitch together on the long side. Press to the darker fabric. Then subcut the strip into four $2\frac{1}{2}$ " sections.



5. Gather the **A3** square and assemble block as shown. Press seams open. You are now ready for your setting block!

