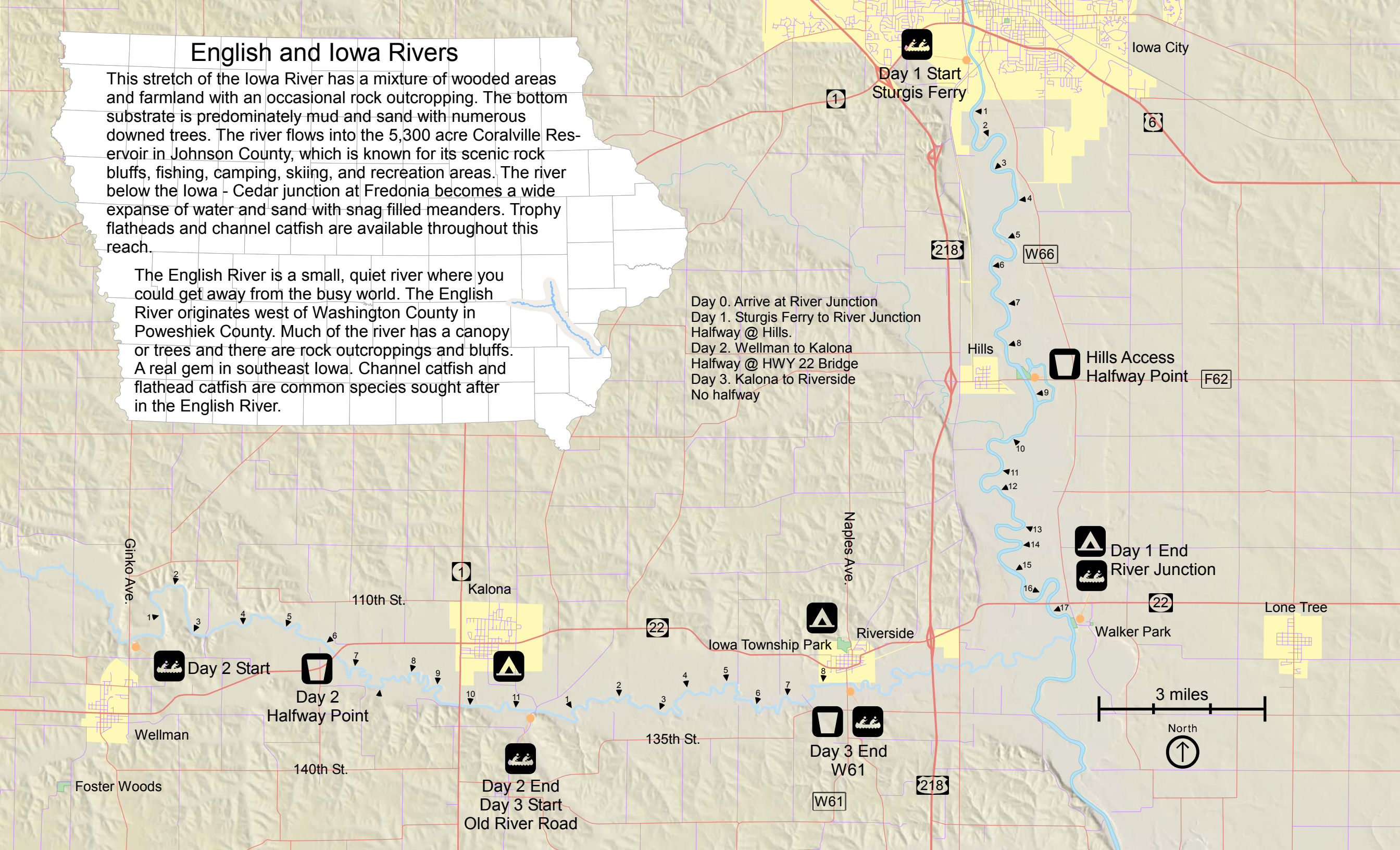


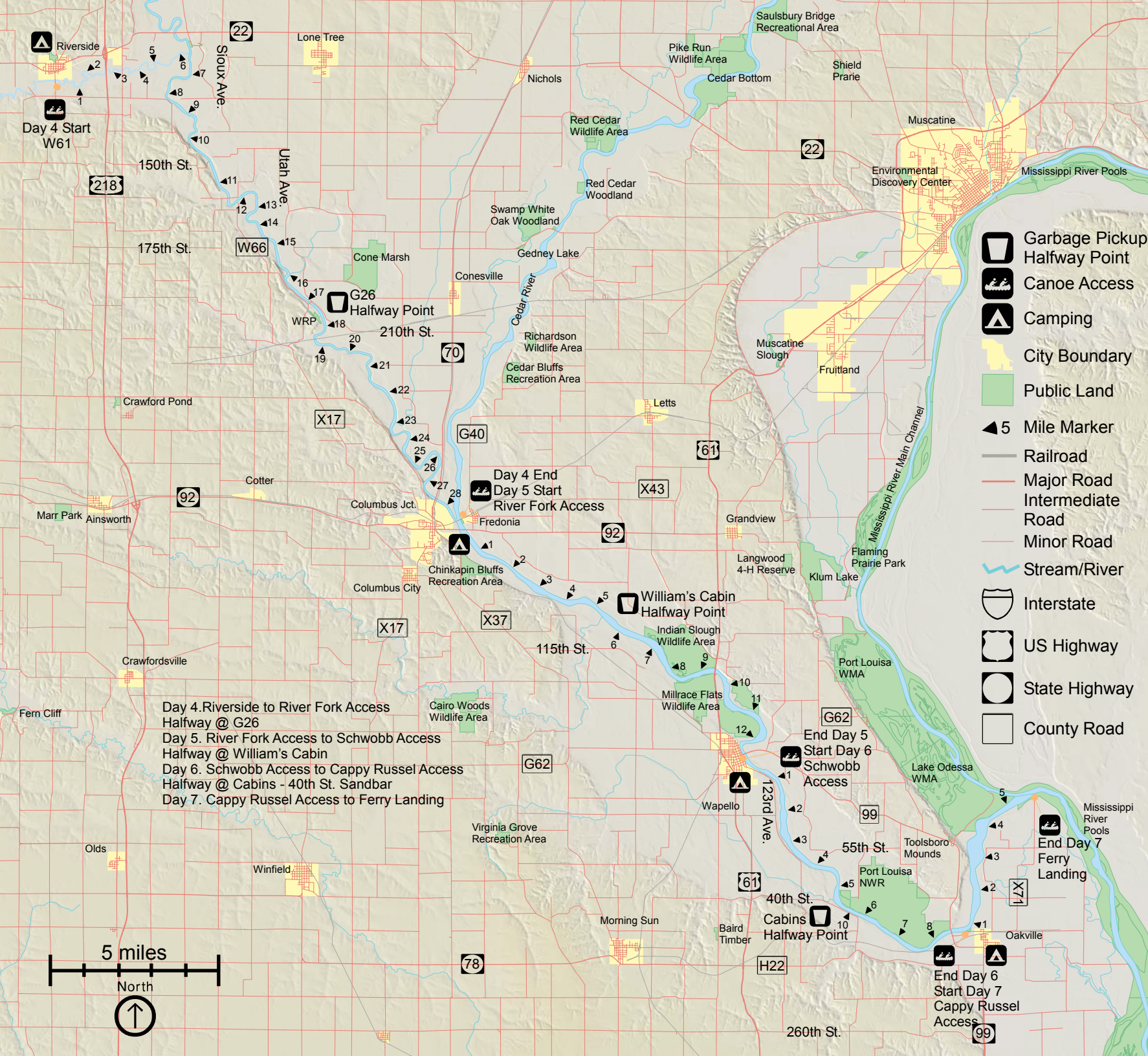
English and Iowa Rivers

This stretch of the Iowa River has a mixture of wooded areas and farmland with an occasional rock outcropping. The bottom substrate is predominately mud and sand with numerous downed trees. The river flows into the 5,300 acre Coralville Reservoir in Johnson County, which is known for its scenic rock bluffs, fishing, camping, skiing, and recreation areas. The river below the Iowa - Cedar junction at Fredonia becomes a wide expanse of water and sand with snag filled meanders. Trophy flatheads and channel catfish are available throughout this reach.

The English River is a small, quiet river where you could get away from the busy world. The English River originates west of Washington County in Poweshiek County. Much of the river has a canopy or trees and there are rock outcroppings and bluffs. A real gem in southeast Iowa. Channel catfish and flathead catfish are common species sought after in the English River.

Day 0. Arrive at River Junction
Day 1. Sturgis Ferry to River Junction
Halfway @ Hills.
Day 2. Wellman to Kalona
Halfway @ HWY 22 Bridge
Day 3. Kalona to Riverside
No halfway





JUNE 17-24, 2006
IOWA RIVER



The maps on this brochure were compiled for the Iowa Department of Natural Resources, using data believed to be accurate; however, a degree of error is inherent in all maps.