

# Quick Checkmate Quilt

Finished Size 49-1/2" x 58-1/2"

## Materials:

3/4 yd—light print  
1 3/8 yd—medium print  
3/4 yd—dark print  
3/8 yd—binding

## Notes:

WOF—width of fabric  
All seams are 1/4"

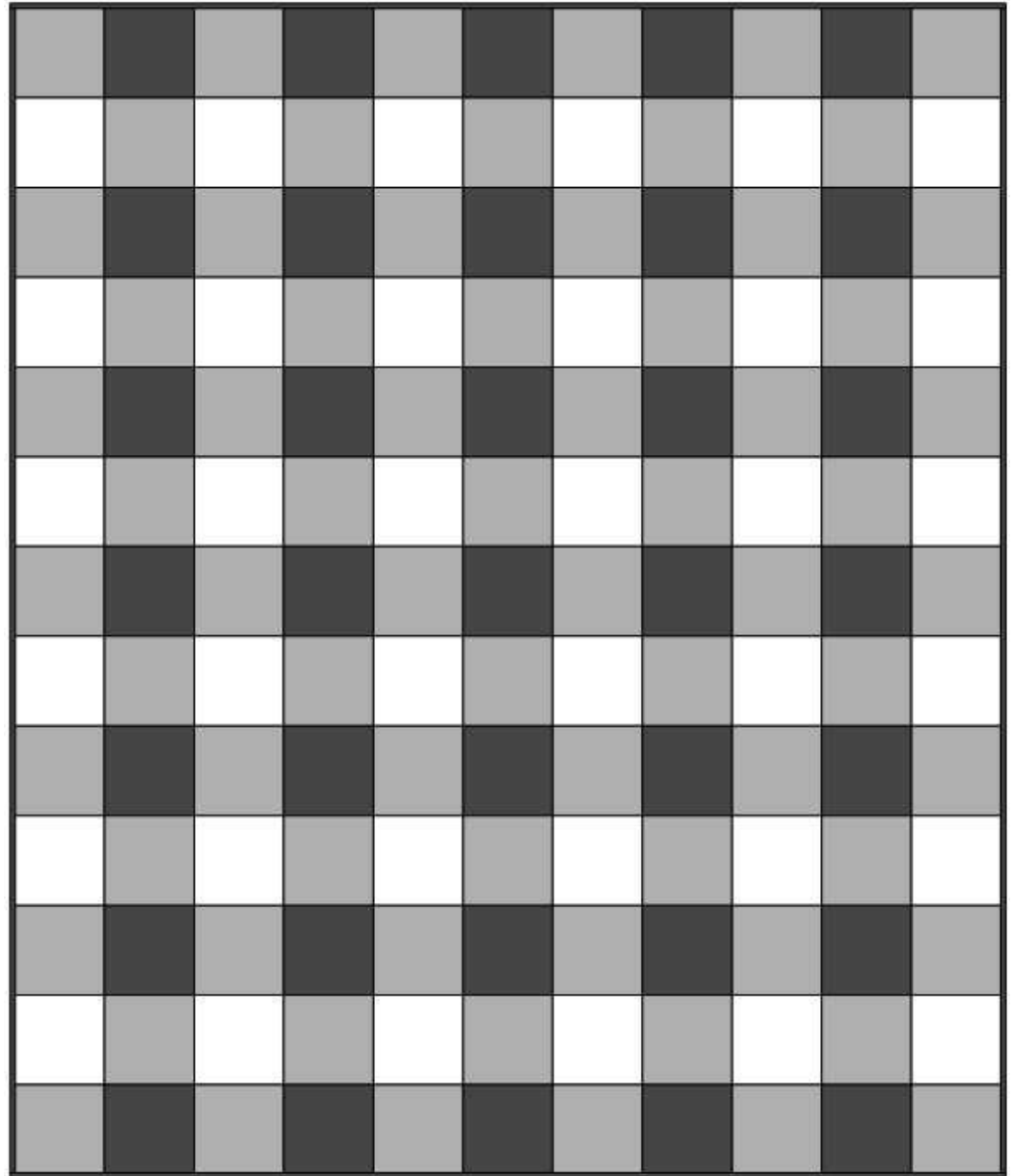
## Cutting:

Light Print—Cut (5) 5" WOF strips and sub cut into (36) 5" squares.

Medium Print—Cut (9) 5" WOF strips and sub cut into (72) 5" squares.

Dark Print—Cut (5) 5" WOF strips and sub cut into (36) 5" squares.

Binding—cut (6) 2-1/2" WOF strips



Lay out rows as diagramed alternating between dark rows and light rows.

When piecing rows together alternating pressing. Press the rows with the dark fabric to the left and press rows with the light fabric to the right.

Sew rows together and press seams open.

Quilt as desired. To bind sew the binding strips together on the diagonal to create one long strip and bind using your preferred method.

This quilt can be made to any size simply by adding additional rows and columns. Each block finish 4-1/2" square. To figure out additional yardage requirements you can get (8) 5" squares out of a 5" WOF strip.