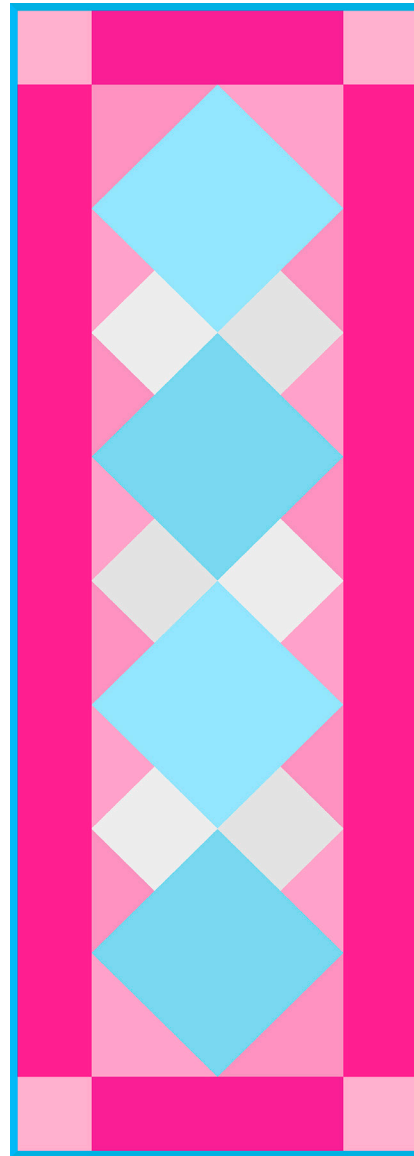


QUILT SIZE 14" × 39"





Finished Size: 14" × 39"

FABRIC REQUIREMENTS							
	Fabric A 31804 G ½ YARD		Fabric B 31806 K ¼ YARD		Fabric C 31808 E ⅜ YARD		Fabric D 31803 G ⅜ YARD
	Fabric E * 31807 O ¼ YARD		Fabric F ** 31802 K ¾ YARD	* includes binding ** includes backing			



We recommend that you carefully read through all instructions before starting your project.

CUTTING INSTRUCTIONS

Fabric A:

- Fussy-cut (4) 6½" squares on point.

Fabric B:

- Cut (1) 3½" x WOF strip. Subcut into (6) 3½" squares.

Fabric C:

- Cut (1) 5½" x WOF strip. Subcut into (3) 5½" squares, (2) 5⅛" squares and (4) 3" squares.

Fabric D:

- Cut (3) 3" x WOF strips. Subcut into (2) 3" x 34" strips and (2) 3" x 9" strips.

Fabric E:

- Cut (3) 2¼" x WOF strips for binding.

PIECED SETTING AND CORNER TRIANGLES

All measurements include ¼" seam allowances. Press in the directions indicated by arrows on diagrams.

1. Sub-cut 3 **Fabric C** 5½" squares in half diagonally twice for 12 side setting triangles (Fig. 1).

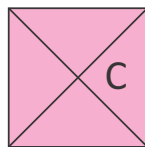


Figure 1

2. Sew Fabric C side setting triangles from step 1 to **Fabric B** 3½" squares (Fig. 2). Press. Trim dog ears. Make 6 pieced setting triangles.

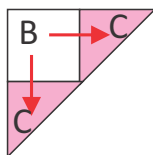


Figure 2

3. Sub-cut 2 **Fabric C** 5⅛" squares in half diagonally for 4 corner setting triangles (Fig. 3).

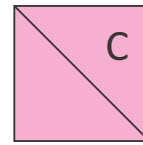


Figure 3

RUNNER CENTER

4. Referring to Figure 4, lay out **Fabric A** squares, pieced setting triangles and 2 **Fabric C** corner setting triangles in 4 diagonal rows. Sew together pieces in each row. Press seams away from fussy-cut squares.
5. Matching adjacent seams, join rows. Press seams in one direction (Fig. 5).
6. Stitch 2 remaining **Fabric C** corner setting triangles to each end to complete the runner center (Fig. 6). Press. Trim dog ears. Runner center should measure 9" x 34".

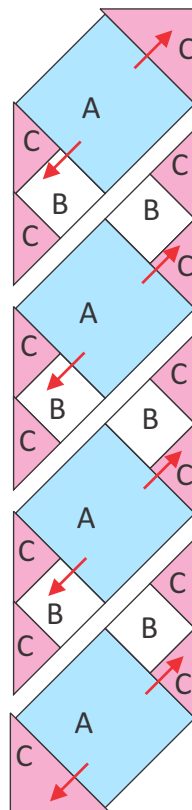


Figure 4

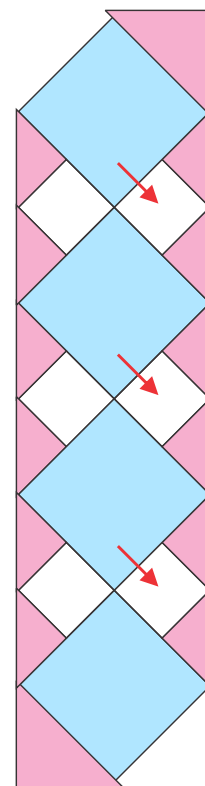


Figure 5

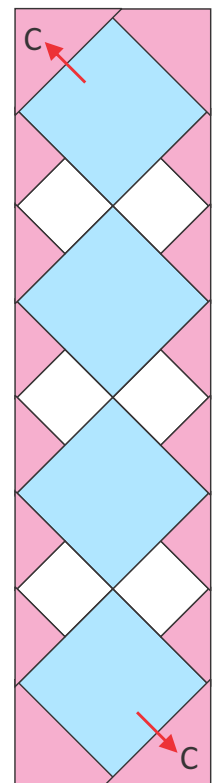


Figure 6



ADD BORDERS

7. Sew **Fabric D** 3" x 34" strip to each side of runner center (Fig. 5). Press to **Fabric D**.

8. Sew **Fabric D** 3" squares to each end of **Fabric D** 3" x 9" strips and press to **Fabric D**. Sew to remaining edges of runner center (Fig. 6). Press all seams to **Fabric D**.

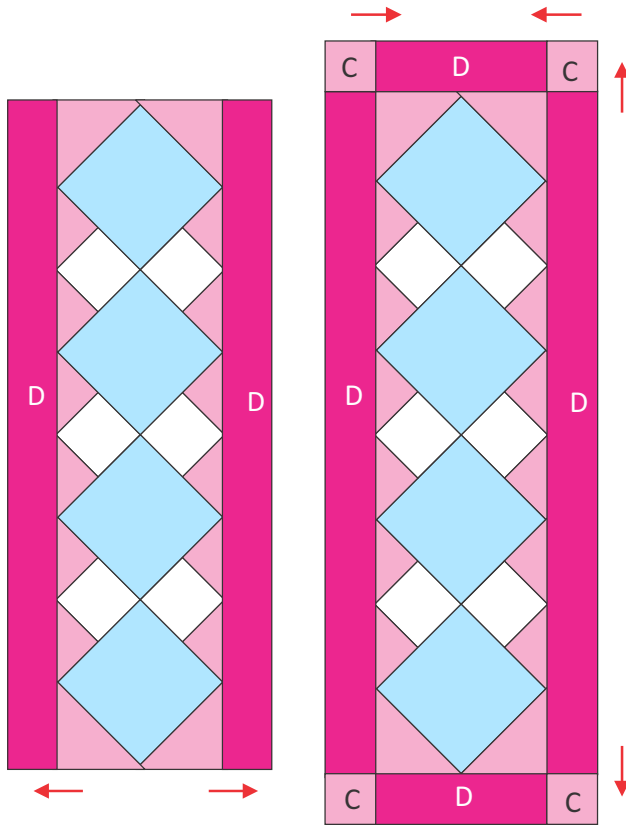


Figure 7

Figure 8

FINISH RUNNER

9. Cut **Fabric F** backing in half, parallel to selvage and sew together (Fig. 9). Press to one side.

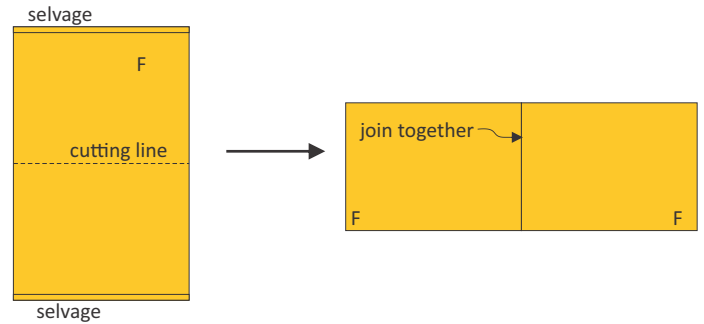


Figure 9

10. Layer runner top, batting and backing; baste.

11. Quilt as desired.

12. Make double-fold binding using the 2¼" wide **Fabric E** strips, and sew the binding to the quilt using your preferred method.

While all possible care has been taken to ensure the accuracy of this pattern, we are not responsible for printing errors or the way in which individual work varies.