



## Wheelhouse Medallion Quilt Club Week 3

Featuring Hindsight by Anna Maria

<b>Collection:</b>	Hindsight by Anna Maria
<b>Technique:</b>	Templates, Fussy-cutting, Piecing, Appliqué, Quilting
<b>Skill Level:</b>	Advanced Beginner
<b>Finished Size:</b>	<b>Finished Size:</b> 80" x 80" (203.20cm x 203.20cm) <b>Finished Block Size:</b> 18" x 18" (45.72cm x 45.72cm)

*All possible care has been taken to assure the accuracy of this pattern. We are not responsible for printing errors or the manner in which individual work varies. Please read the instructions carefully before starting this project. If kitting it is recommended a sample is made to confirm accuracy.*

Project designed by Anna Maria  
Tech edited by Alison M. Schmidt

## General Instructions

**Read all instructions before beginning the project.**

*All seam allowances are  $\frac{1}{4}$ " (.64cm) and pieces are sewn right sides together. Remember pieces cut from templates have bias edges, so handle with care and follow the recommendation to starch all fabrics prior to cutting. Follow the arrows for pressing direction.*

## WOF = Width of Fabric

The construction of this medallion style quilt has been divided across 5 months, starting from the Center Block and building outwards. During some months, pieces will be cut in advance and sewn during a later month.

**Month 1:** Center Block

**Month 2:** Inner Quarter Blocks, excluding corner units

**Month 3:** Outer Quarter Blocks, Corner Blocks, and partial quilt assembly

**Month 4:** Corner Blocks, partial quilt assembly, and appliqué

**Month 5:** Borders, Quilting, and Binding

## Templates

A complete set of Wheelhouse Quilt Templates are required to complete the quilt. The Small Triangle, Triangle Center, Large Triangle, and Border Triangle templates include a  $\frac{1}{4}$ " (.64cm) seam allowance. The side of the template with the text is considered the right side – to cut a Reverse shape from a template, flip it so the text is facing down. The Medium and Large Circle Templates are for appliqué, and **do not include a seam allowance**, as appliqué seam allowance requirements vary based on the method used.

## FUSSY CUTTING

Refer to the cutting diagrams in each month's cutting section when placing templates and cutting with rulers and rotary cutters. These diagrams are only to be used as a placement guide - the beginning and ending points of the repeat in the yardages received each month may differ from the diagrams. Extra yardage allowed in the fabric requirements ensures that all of the fussy cut pieces can be cut no matter where the print repeat begins.

**Starch fabrics and let dry prior to cutting to reduce the possibility of stretching/distorting the bias-cut edges.**

To fussy cut fabric pieces, place the heat resistant reusable plastic templates right side up, on the right side of a single layer of fabric, over the print design indicated in the instructions. **To avoid trimming away the template edges, first trace around the template, remove the template, and then cut out on the inside edge of the traced line using scissors.**

## Tips:

- Use a fine dry erase marker to draw guidelines of the fussy cut motif on the right side of the template to help position it for perfect repeat cuts. Wipe off and mark again on the opposite side for Reverse cuts.
- If the fabric moves while tracing, place a piece of fine grit sandpaper underneath the fabric to hold secure.

## Appliqué

Appliqué cutting and sewing instructions for hand or machine appliqué are provided in Month 4.

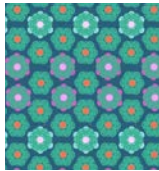
**Note:** *The appliqué circle templates provided **do not include a seam allowance**.*



## Month 3

### Fabric Requirements

DESIGN	COLOR	ITEM ID	YARDAGE
(F) Honeycomb	Denim	PWAH143.DENIM	1¼ yards (1.14m)
(G) Stitched Bouquet	Dim	PWAH147.DIM	1¼ yards (1.14m)
(H) Piecework	Sea	PWAH145.SEA	2¾ yards (2.51m)



(F)



(G)



(H)

### Additional Recommendations

- **Templates:** Small Triangle, Triangle Center, and Large Triangle
- Hindsight by Anna Maria Aurifil Thread Collection
- **Unit from Month 1:** Center Block
- **Units from Month 2:** (8) Quarter Block 1 and (8) Quarter Block 2

## Cutting

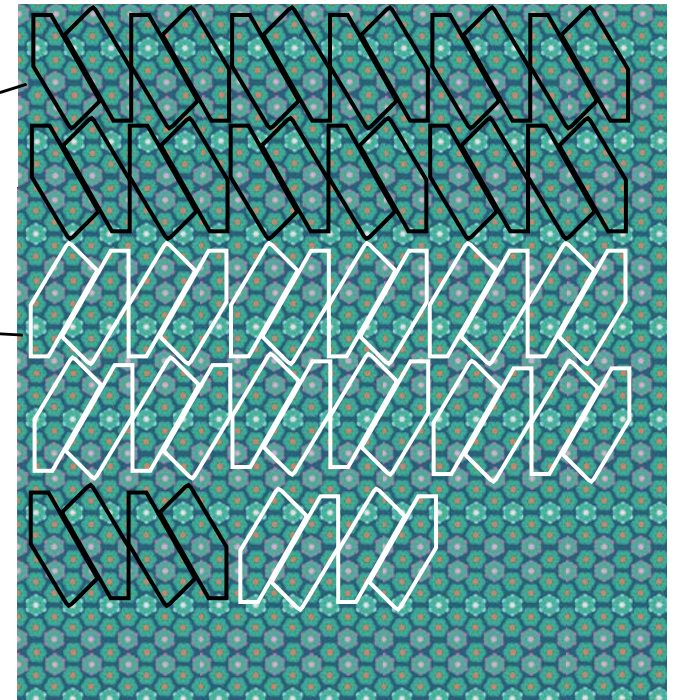
Refer to Fussy Cutting, page 2, for best practices for fussy cutting.

### Fabric F, cut:

(28) Triangle Centers and **(28) Reverse** Triangle Centers using the template, placing the indicated edge on the lengthwise grain (noted on template); set aside (12 and 12 Reverse) for Month 4

Triangle Center template: Cut 28, noting lengthwise grain

**Reverse** Triangle Center template: Cut 28, noting lengthwise grain

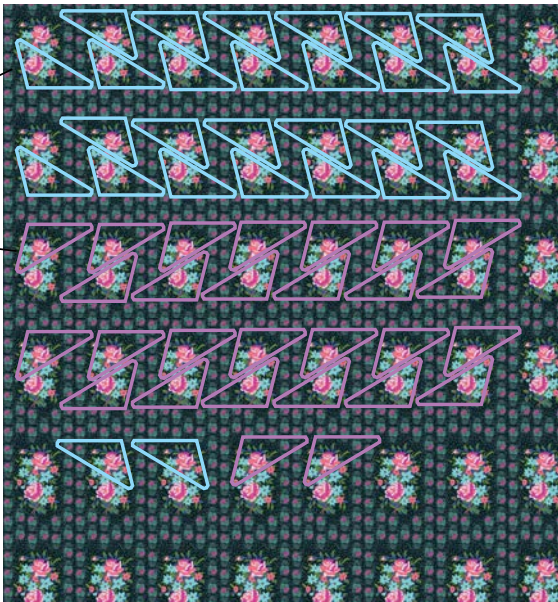


## Fabric G, fussy cut:

(28) Small Triangles and **(28) Reverse** Small Triangles, using the template with the shortest side on the rose motif; set aside (12 and 12 Reverse) for Month 4

Small Triangle template:  
Cut 28

**Reverse** Small Triangle template:  
Cut 28



## Fabric H, fussy cut:

**Note:** The position of the fussy-cut flower in the large triangle differs based on the block position, even though the construction is the same. For the top/bottom blocks, cut with the flower towards the narrow point on the template (called 'point' below). For the side blocks, cut with the flower towards the center of the template ('centered').

(16) Large Triangles, using the template and fussy cutting (8) point flowers and (8) centered flowers

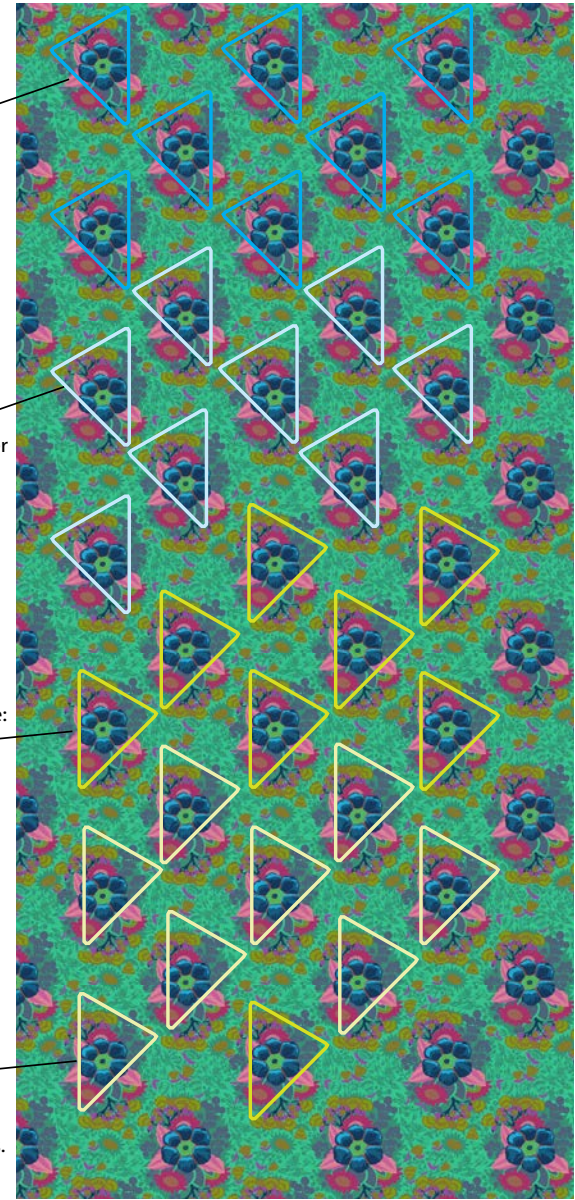
**(16) Reverse** Large Triangles, using the template and fussy cutting (8) point flowers and (8) centered flowers

Large Triangle template: Cut 8 with the flower centered for the Side Blocks.

Large Triangle template: Cut 8 with the flower towards the inner point for the Top/Bottom Blocks.

**Reverse** Large Triangle template: Cut 8 with the flower centered for the Side Blocks.

**Reverse** Large Triangle template: Cut 8 with the flower towards the inner point for the Top/Bottom Blocks.





## Instructions

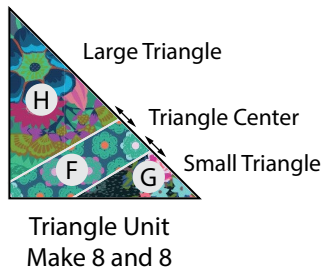
All seam allowances are  $\frac{1}{4}$ " (.64cm) and pieces are sewn right sides together. Remember pieces cut from templates have bias edges, so handle with care and follow the recommendation to starch all fabrics prior to cutting. Follow the arrows for pressing direction.

### Quarter Block 3

Use the point flower position **Fabric H** Large Triangles for the Top/Bottom blocks and the centered flower **Fabric H** Large Triangles for the Side blocks.

1. Sew together a **Fabric H** Large Triangle, **Fabric F** Triangle Center, and **Fabric G** Small Triangle as shown (**Fig. 1**). Repeat to make (16) Triangle Units: (8) **Fabric H** point and (8) **Fabric H** centered.

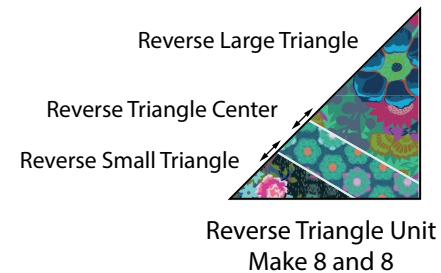
**Fig. 1**



**Note:** only the point flower placement version is shown.

2. Sew together a **Fabric H** Reverse Large Triangle, **Fabric F** Reverse Triangle Center, and **Fabric G** Reverse Small Triangle as shown (**Fig. 2**). Repeat to make (16) Reverse Triangle Units consisting of (8) **Fabric H** point and (8) **Fabric H** centered.

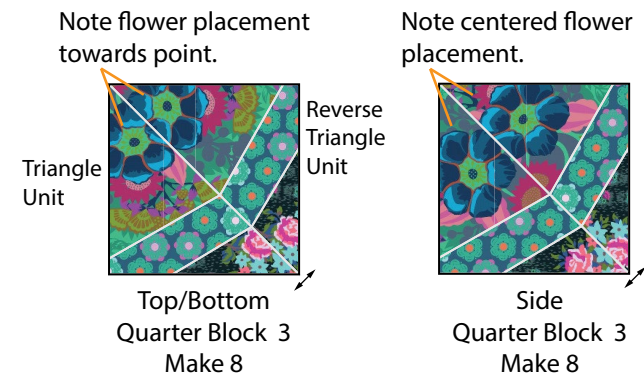
**Fig. 2**



**Note:** only the point flower placement version is shown.

3. Sew together a **Fabric H** Triangle unit and Reverse Triangle unit, matching the seams, to complete a Quarter Block 3 ( $9\frac{1}{2}$ " (24.13cm) square) as shown (**Fig. 3**). Repeat to make (8) **Fabric H** (point) Quarter Block 3 and (8) **Fabric H** (centered) Side Quarter Block 3.

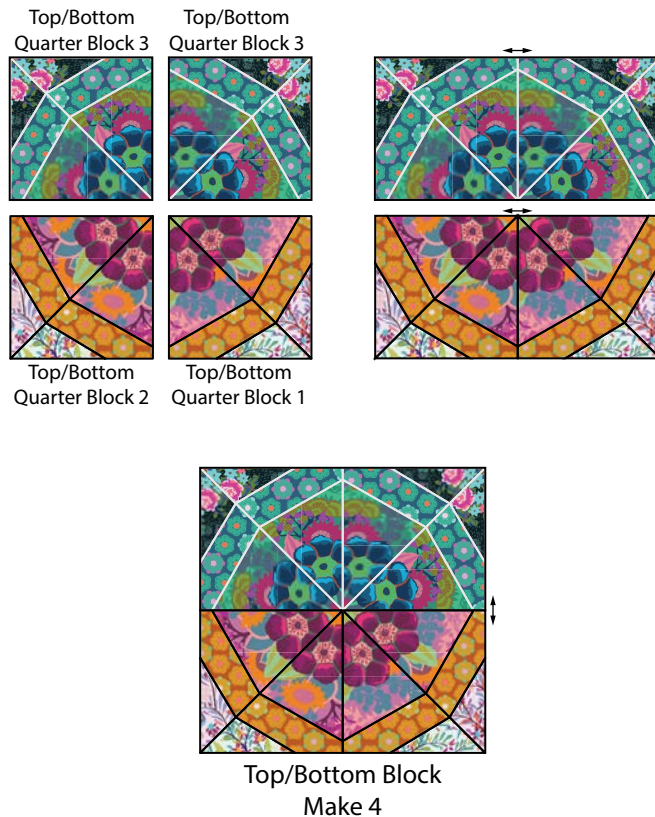
**Fig. 3**



## Side and Top/Bottom Blocks

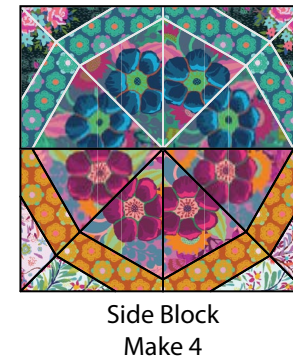
4. Sew (2) **Fabric H** Top/Bottom Flower Quarter Block 3 together. Sew a **Fabric E** Top/Bottom Quarter Block 2 to the left side of a **Fabric E** Top/Bottom Quarter Block 1. Sew the pieced sections together to complete a Top/Bottom Block (18½" (46.99cm) square) (**Fig. 4**). Repeat to make (4) Top/Bottom Blocks.

Fig. 4



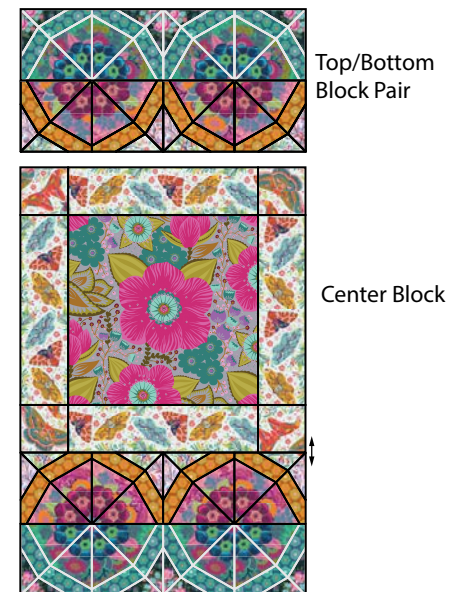
5. Repeat step 4 using the centered Side Quarter Blocks to make (4) Side Blocks as shown (**Fig. 5**).

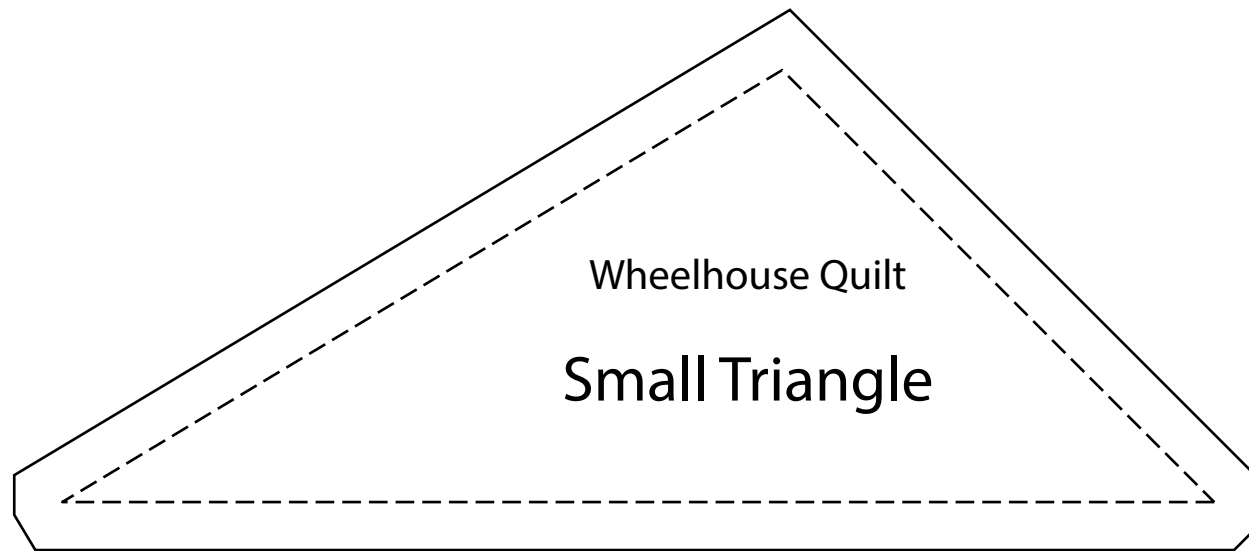
Fig. 5



## Quilt Top Assembly

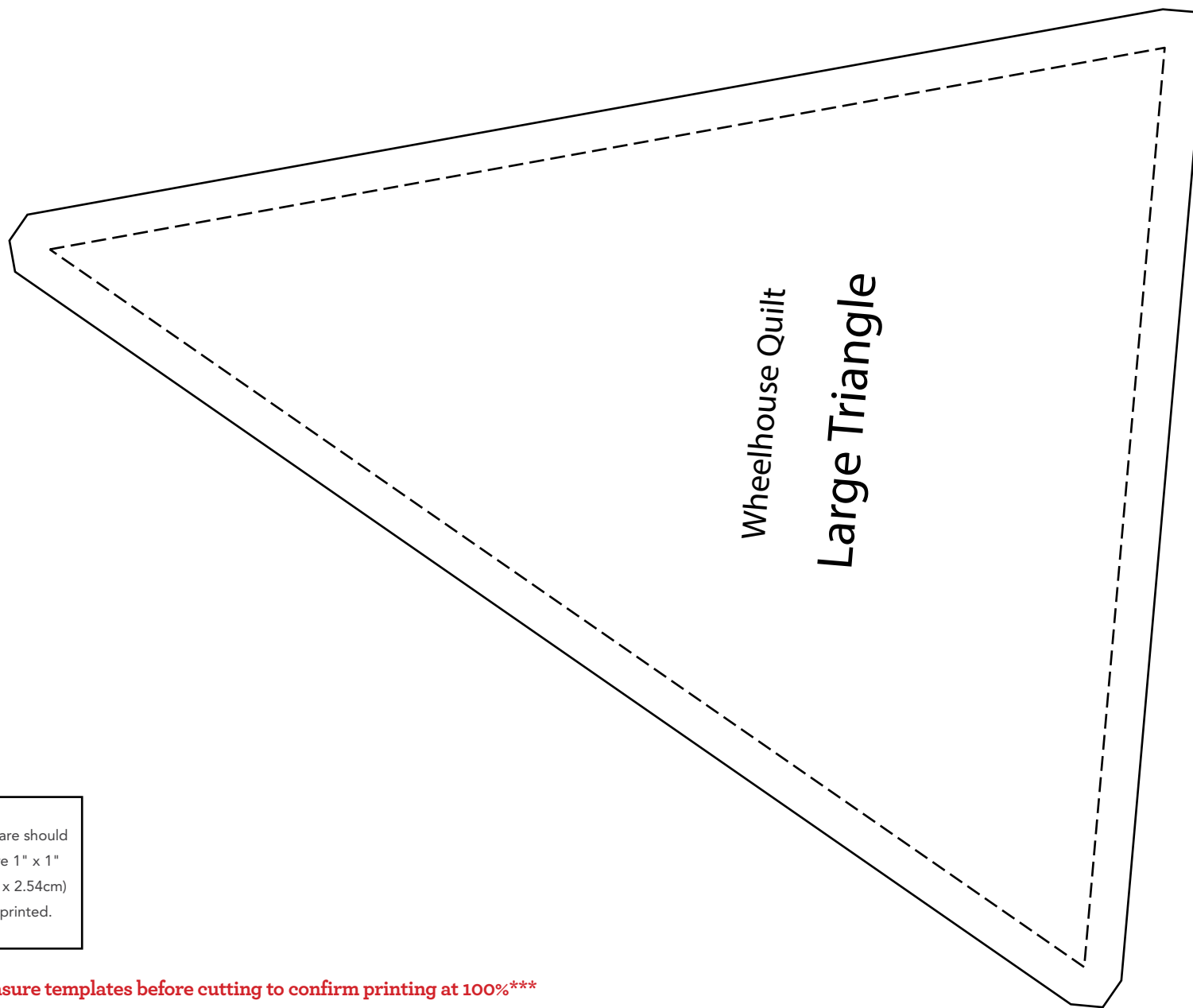
6. Sew the Top/Bottom Blocks together into (2) sets of (2) paired Blocks.
7. Sew a Top/Bottom Block pair to the top and to the bottom of the Center Block, with the **Fabric E** triangles towards the center. (**Fig. 6**)





This square should  
measure 1" x 1"  
(2.54cm x 2.54cm)  
when printed.

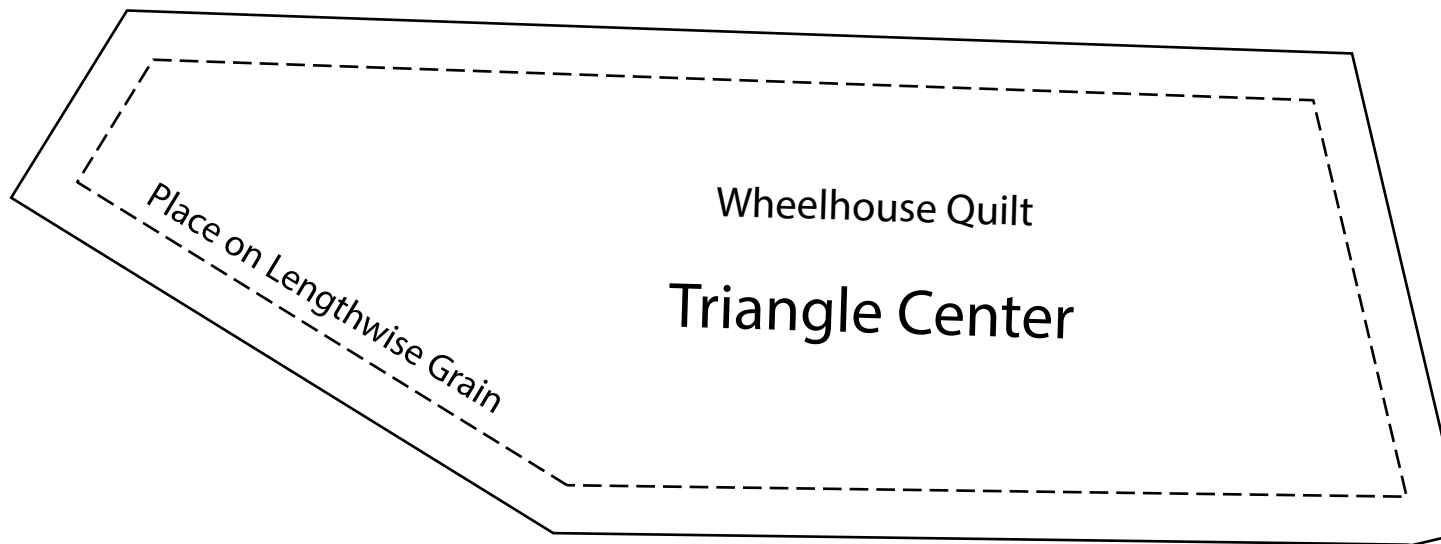
**\*\*\* Measure templates before cutting to confirm printing at 100%\*\*\***



This square should  
measure 1" x 1"  
(2.54cm x 2.54cm)  
when printed.

**\*\*\* Measure templates before cutting to confirm printing at 100%\*\*\***





This square should  
measure 1" x 1"  
(2.54cm x 2.54cm)  
when printed.

**\*\*\* Measure templates before cutting to confirm printing at 100%\*\*\***