

Palm Leaf Shawlette: Fiji



This is part of my World Tour collection. I have yarn, I have ideas and I am letting the rest develop along the way. This is the first installment and stop along our trip: Fiji!! This Pattern is inspired by the lush vegetation of Fiji I picked the colorway The Grass is Greener by Ryberry yarns before I left. Little did I know what a choice I made! The palm trees, bushes and other trees are GREEN! This yarn feels right at home here. I found a Stitch pattern on the internet but made changes to the direction the ssk and k2tog bend so as to create a strong spine to the fronds and a sawtooth edge. Voila the edge is ready. As I finish up my edge I will pick up stitches along the k2 side of the shawl and build a gentle crescent decrease so that the shawl sits nicely around your neck for sunny tropical nights (or just to help you imagine you are here on this island soaking up the sun as it dips into the blue horizon!).



Yarn: Ryberry yarns 60% superwash merino 20% yak and 20% silk: In the colorway (The Grass is Greener).
100grams, Fingering weight.

Needles: chiaogoo Size 4, 40" circular red lace.

Unblocked stockinette Gauge: 5st per inch, 7 rows per inch.

Finished Size: Border 8" x 64"

Instructions:

The instructions for this shawl will be coming in installments. This first part-the Palm Leaf border comes first. I have provided both a charted and written set of instructions. You are

getting this as it is written so definitely if you find any errors let me know! I will quickly fix them as soon as I have access to internet ☺.

Key:

Co: Cast on	<input type="checkbox"/> Knit
Pm: place marker	
K: knit	○ Yarn over
P: purl	\ Slip slip knit
Ktbl: knit through the back loop	/ Knit two together
Ssk: slip, slip, knit	
K2tog: knit two together	<u>v</u> Slip stitch knit-wise, with yarn in front
Yo: yarn over	
Slip wyif: Slip Stitch Purlwise with yarn in front.	

For everyone (whether planning to use the chart or written instructions!)

1. Only odd numbered rows are provided. At the end of each odd number row turn and purl back (these are counted as your even numbered rows).
2. **Cast on (co) 43 stitches.**
3. Repeat rows 1-44 seven times

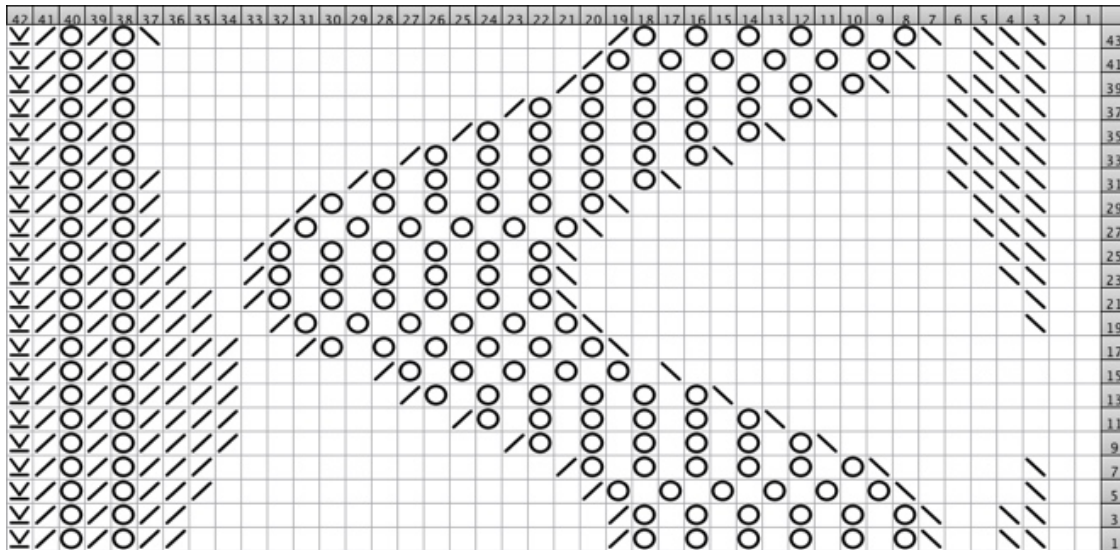


Diagram 1: Palm Leaf Border

Palm Leaf Border Written:

Row 1. Ktbl across. (all odd rows are the RS of work)

Row 2. P across (all even rows are p across and wrong side of work).

Row 3. k2, ssk2, k2, ssk, yo, k1, yo, k1, yo, k1, yo, k1, yo, k1, yo, k2tog, k16, k2tog2, yo, k2tog, yo, k2tog, slip wyif

Row 5. k2, ssk2, k2, ssk, yo, k1, yo, k1, yo, k1, yo, k1, yo, k1, yo, k2tog, k16, k2tog2, yo, k2tog, yo, k2tog, slip wyif

Row 7. k2, ssk, k4, ssk, yo, k1, yo, k1, yo, k1, yo, k1, yo, k1, yo, k2tog, k14, k2tog3, yo, k2tog, yo, k2tog, slip wyif

Row 9. k2, ssk, k5, ssk, yo, k1, yo, k1, yo, k1, yo, k1, yo, k1, yo, k2tog, k13, k2tog3, yo, k2tog, yo, k2tog, slip wyif

Row 11. k10, ssk, yo, k1, yo, k1, yo, k1, yo, k1, yo, k1, yo, k1, yo, k2tog, k10, k2tog4, yo, k2tog, yo, k2tog, slip wyif

Row 13. k12, ssk, yo, k1, yo, k1, yo, k1, yo, k1, yo, k1, yo, k1, yo, k2tog, k8, k2tog4, yo, k2tog, yo, k2tog, slip wyif

Row 15. k14, ssk, yo, k1, yo, k1, yo, k1, yo, k1, yo, k1, yo, k1, yo, k2tog, k6, k2tog4, yo, k2tog, yo, k2tog, slip wyif

Row 17. k16, ssk, k1, yo, k1, yo, k1, yo, k1, yo, k1, yo, k1, yo, k2tog, k5, k2tog4, yo, k2tog, yo, k2tog, slip wyif

Row 19. k18, ssk, yo, k1, yo, k1, yo, k1, yo, k1, yo, k1, yo, k1, yo, k2tog, k2, k2tog4, yo, k2tog, yo, k2tog, slip wyif

Row 21. k2, ssk, k16, ssk, yo, k1, yo, k1, yo, k1, yo, k1, yo, k1, yo, k1, yo, k2tog, k2, k2tog3, yo, k2tog, yo, k2tog, slip wyif

Row 23. k2, ssk, k17, ssk, yo, k1, yo, k1, yo, k1, yo, k1, yo, k1, yo, k1, yo, k2tog, k1, k2tog3, yo, k2tog, yo, k2tog, slip wyif

Row 25. k2, ssk2, k16, ssk, yo, k1, yo, k1, yo, k1, yo, k1, yo, k1, yo, k1, yo, k2tog, k2, k2tog2, yo, k2tog, yo, k2tog, slip wyif

Row 27. k2, ssk2, k16, ssk, yo, k1, yo, k1, yo, k1, yo, k1, yo, k1, yo, k1, yo, k2tog, k2, k2tog2, yo, k2tog, yo, k2tog, slip wyif

Row 29. k2, ssk3, k14, ssk, yo, k1, yo, k1, yo, k1, yo, k1, yo, k1, yo, k1, yo, k2tog, k4, k2tog, yo, k2tog, yo, k2tog, slip wyif

Row 31. k2, ssk3, k13, ssk, yo, k1, yo, k1, yo, k1, yo, k1, yo, k1, yo, k1, yo, k2tog, k5, k2tog, yo, k2tog, yo, k2tog, slip wyif

Row 33. k2, ssk4, k10, ssk, yo, k1, yo, k1, yo, k1, yo, k1, yo, k1, yo, k1, yo, k2tog, k7, k2tog, yo, k2tog, yo, k2tog, slip wyif

Row 35. k2, ssk4, k8, ssk, yo, k1, yo, k1, yo, k1, yo, k1, yo, k1, yo, k1, yo, k2tog, k10, yo, k2tog, yo, k2tog, slip wyif

Row 35. k2, ssk4, k6, ssk, yo, k1, yo, k1, yo, k1, yo, k1, yo, k1, yo, k1, yo, k2tog, k12, yo, k2tog, yo, k2tog, slip wyif

Row 37. k2, ssk4, k4, ssk, yo, k1, yo, k1, yo, k1, yo, k1, yo, k1, yo, k1, yo, k2tog, k14, yo, k2tog, yo, k2tog, slip wyif

Row 39. k2, ssk4, k2, ssk, yo, k1, yo, k1, yo, k1, yo, k1, yo, k1, yo, k1, yo, k2tog, k16, yo, k2tog, yo, k2tog, slip wyif

Row 41. k2, ssk3, k2, ssk, yo, k1, yo, k1, yo, k1, yo, k1, yo, k1, yo, k1, yo, k2tog, k17, yo, k2tog, yo, k2tog, slip wyif

Row 43. k2, ssk3, k1, ssk, yo, k1, yo, k1, yo, k1, yo, k1, yo, k1, yo, k1, yo, k2tog, k17, ssk, yo, k2tog, yo, k2tog, slip wyif



Garter Section

In this part of your shawllette you will pick up stitches and cast on stitches along the long side of your work so that work is both connected to the palm leaf section but holes remain as well. You will also do some shaping at either end and in two places in this work.

Set up row: Bind off 28 st, k the remaining 15 st, *c/o 22 st, using a cable cast on (and facing the right side of the palm leaf design), Sk 22 rows of your work, pick up 22 stitches along the row edge of the palm leaf design edge**. Repeat from * to ** 6 more times. c/o 22 st, using the cable cast on. Turn the work and pick up 15 st on the end of the palm leaf border (into the original c/o edge), Turn. (360 stitches on needles)

Row 1: Ssk, k 98, pm, ssk, k164 st, k2tog, pm, k to end of row, turn.

Row 2: Ssk, k to marker, ssk, k to 2 st before next marker, k2tog, k to end of row, turn.

Rows 3-bind off row: Repeat rows 2 and 3.

Bind off row: When 8 yards of yarn remains bind off loosely. I included the each of the 3 decrease st during the bind off (and removed the stitch markers!). **Finishing:** Hide ends and block firmly pulling the leaves so that they undulate and form a scalloped border.