



Designed By: Sue Harvey and Sandy Boobar of Pine Tree Country Quilts  
Finished Quilt Size: 53" x 68"  
Finished Block Size: 15" x 15"  
Number of Blocks: 12

*Tina Higgins*



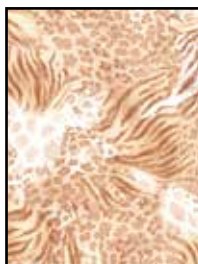
24832 A



24834 A



24834 K



24835 A

QUILT REQUIREMENTS		
Design:	Yards	Bolts
24832 A	$\frac{2}{3}$	1
24834 A	$1\frac{1}{8}$	2
24834 K	$\frac{7}{8}$	1
24835 A	1	1
24835 O	1	1
24837 E	1	1
22542 A (includes binding)	$1\frac{1}{4}$	2
24833 A (backing only)	$4\frac{1}{3}$	4



24835 O



24837 E



22542 A



24833 A

### Cutting Directions

WOF = width of fabric from selvage to selvage.  
Remove as little fabric as possible when squaring strip ends.

#### 24832 A - Out of Africa Panel

- Fussy-cut (6)  $9\frac{1}{2}$ " squares with animal centered in each square. **Note:** The frame in the giraffe square will not be centered. Refer to the cover quilt for motif positioning.

#### 24834 A - Tan Animals

- 2 strips  $3\frac{1}{2}$ " x  $62\frac{1}{2}$ " along length of fabric for outer side borders.
- 2 identical strips  $3\frac{1}{2}$ " x remaining WOF for outer top border.
- 2 identical strips  $3\frac{1}{2}$ " x remaining WOF for outer bottom border.

#### 24834 K - Gray Animals

- 3 strips 8" x WOF; recut into (12) 8" squares.

#### 24835 A - Tan Skins

- 1 strip  $12\frac{1}{2}$ " x WOF; recut into (12)  $1\frac{1}{2}$ " x  $12\frac{1}{2}$ " strips. Trim remainder of strip to  $10\frac{1}{2}$ " wide; recut into (12)  $1\frac{1}{2}$ " x  $10\frac{1}{2}$ " strips.
- 3 strips  $3\frac{7}{8}$ " x WOF; recut into (24)  $3\frac{7}{8}$ " squares.
- 1 strip  $3\frac{1}{2}$ " x WOF; recut into (12)  $3\frac{1}{2}$ " squares.

#### 24835 O - Rust Skins

- 2 strips  $2\frac{1}{2}$ " x WOF; recut into (24)  $2\frac{1}{2}$ " squares.
- 3 strips  $3\frac{1}{2}$ " x WOF; recut into (36)  $3\frac{1}{2}$ " squares.
- 3 strips  $3\frac{7}{8}$ " x WOF; recut into (24)  $3\frac{7}{8}$ " squares.

#### 24837 E - Cream Texture

- 13 strips 2" x WOF; recut into (12) 2" x  $15\frac{1}{2}$ " strips, (12) 2" x  $12\frac{1}{2}$ " strips and (48) 2" x  $3\frac{1}{2}$ " rectangles.

#### 22542 A - Brown Texture

- 6 strips 1" x WOF; recut into (12) 1" x  $10\frac{1}{2}$ " strips and (12) 1" x  $9\frac{1}{2}$ " strips.
- 1 strip 2" x WOF; recut into (12) 2" squares.
- 6 strips  $1\frac{1}{2}$ " x WOF for inner border.
- 7 strips  $2\frac{1}{4}$ " x WOF for binding.

#### 24833 A - Animal Patches (Backing Only)

- 2 pieces 76" x WOF for backing.

#### Framed Animal Blocks

**Note:** Use a  $\frac{1}{4}$ " seam allowance for all stitching.

1. Sew a 1" x  $9\frac{1}{2}$ " brown strip to opposite sides of each panel square. Press seams toward the strips. Stitch a 1" x  $10\frac{1}{2}$ " brown strip to the top and bottom. Press seams toward the strips. Repeat with  $1\frac{1}{2}$ " x  $10\frac{1}{2}$ " and  $1\frac{1}{2}$ " x  $12\frac{1}{2}$ " tan skins strips.



2. Draw a diagonal line on the wrong side of each 2½" and 3½" rust skins square. Set aside (12) 3½" squares for Crossing Africa blocks.
3. Place a marked 2½" square right sides together on each corner of the bordered panel squares. Sew on the marked lines. Trim seam allowance ¼" out from the stitched lines. Press the rust triangles open.



4. Stitch a 2" x 12½" cream strip to opposite sides of each bordered panel square. Press seams toward the strips. Sew a 2" x 15½" cream strip to the top and bottom. Press seams toward the strips.



5. Repeat step 3 with marked 3½" squares to complete (6) 15½" x 15½" Framed Animal blocks.



Framed Animal Block - Make 6

### Crossing Africa Blocks

1. Draw a diagonal line on the wrong side of each 3½" and 3⅞" tan skins square.
2. Place a marked 3½" tan square on the top right corner of a gray animals square and a marked 3½" rust square right sides together on the bottom left corner. Sew on the marked lines. Trim seam allowance ¼" out from the stitched lines. Press the tan and rust triangles open with seams toward the gray animals square to complete 1 A unit. Repeat to make 6 A units.
3. Repeat step 2, placing the marked tan square on the bottom left corner and marked rust square on the top right corner, to make 6 B units.



A Unit - Make 6



B Unit - Make 6

4. Place a marked 3⅞" tan square right sides together with a 3⅞" rust square. Stitch ¼" from each side of the marked line. Cut on the line. Press units open with seams toward the rust triangles to complete (2) 3½" x 3½" triangle units. Repeat to make 48 triangle units.



Triangle Units - Make 48

5. Sew a 2" brown square between (2) 2" x 3½" cream rectangles to make a 2" x 8" center strip. Press seams toward the cream rectangles. Stitch a 2" x 3½" cream rectangle between 2 triangle units to make a 3½" x 8" top/bottom strip. Press seams toward the cream rectangle. Repeat to make a second top/bottom strip. Sew the center strip between the top/bottom strips to make an 8" x 8" corner unit. Press seams toward the center strip. Repeat to make 12 corner units.



Corner Unit - Make 12

6. Stitch an A unit to a corner unit to make an 8" x 15½" row. Press seam toward the A unit. Repeat with a corner unit and B unit. Join the rows to complete (1) 15½" x 15½" Crossing Africa block. Press seam to 1 side. Repeat to make 6 blocks.



Crossing Africa Block - Make 6

### Quilt Assembly

Refer to the exploded quilt diagram as needed throughout the following steps.

1. Sew a Crossing Africa block between 2 Framed Animal blocks to make the 15½" x 45½" row 1. Press seams toward the Framed Animal blocks. Repeat to make row 3.
2. Stitch a Framed Animal block between 2 Crossing Africa blocks to make the 15½" x 45½" row 2. Press seams toward the Framed Animal block. Repeat to make row 4.
3. Join the rows to complete the 45½" x 60½" quilt center. Press seams to 1 side.
4. Sew the 1½" x WOF brown texture strips short ends together to make a long strip. Press seams to 1 side. Cut into (2) 60½" strips and (2) 47½" strips. Stitch the longer strips to the long sides of the quilt center and the shorter strips to the top and bottom. Press seams toward the strips.
5. Stitch the 3½" x 62½" tan animals strips to the long sides of the quilt center. Press seams toward the strips.
6. Sew 2 identical 3½" x remaining WOF tan animals strips short ends together to make a long strip, matching the print at the seam as much as possible. Press seam to 1 side. Trim to 53½" to make the top strip. Repeat with the 2 remaining identical strips to make the bottom strip. Stitch the strips to the top and bottom of the quilt center to complete the top. Press seams toward the strips.
7. Remove the selvage edges from the backing pieces. Join the pieces on the long edges with a ½" seam allowance. Press seam open. Trim the edges to make a 61" x 76" backing piece.
8. Layer the top with the backing and a 61" x 76" batting piece. Quilt as desired. Trim edges even with the top.
9. Prepare brown texture binding and bind edges using your favorite method to complete the quilt.



Exploded Quilt Diagram

Designed by: Sue Harvey and Sandy Boobar