

Binding by folding the Backing to the front and topstitching

By Tess Pokorny of Scrap and Sew, Inc. 16541 Pointe Village Drive, Lutz, FL 813-749-0888

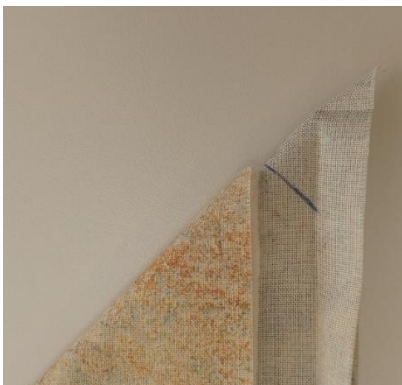
Trim the batting even with the quilt top. Trim the backing 1" wider on all 4 sides.



Fold the backing to butt the raw edge of the backing to the raw edge of the quilt and press in place. Let the corners overlap. Using a ruler with a 45 degree line, draw a line using a removable ink or pencil on the wrong side of the backing that "kisses" the corner of the quilt top. Stop the line at the crease where you ironed.



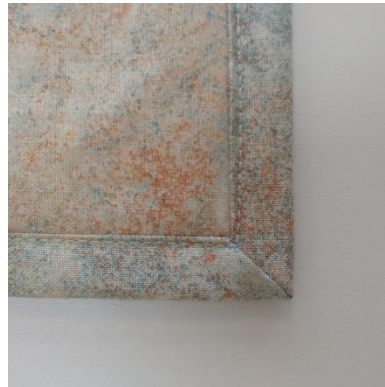
Fold in half with backing right sides together and sew on the mark. Trim $\frac{1}{4}$ " away from the seam.



Turn the corner right side out, tucking the quilt inside the mitered corner.



The corners should work themselves out and create a flat mitered corner. Press all the way around the quilt. This should create a binding that cover the edge of your quilt by about $\frac{1}{2}$ ". Topstitch all the way around.



P.S. If you want a narrower binding, you can trim the backing $\frac{3}{4}$ " wider than the quilt top. That should yield a binding about $\frac{3}{8}$ ".