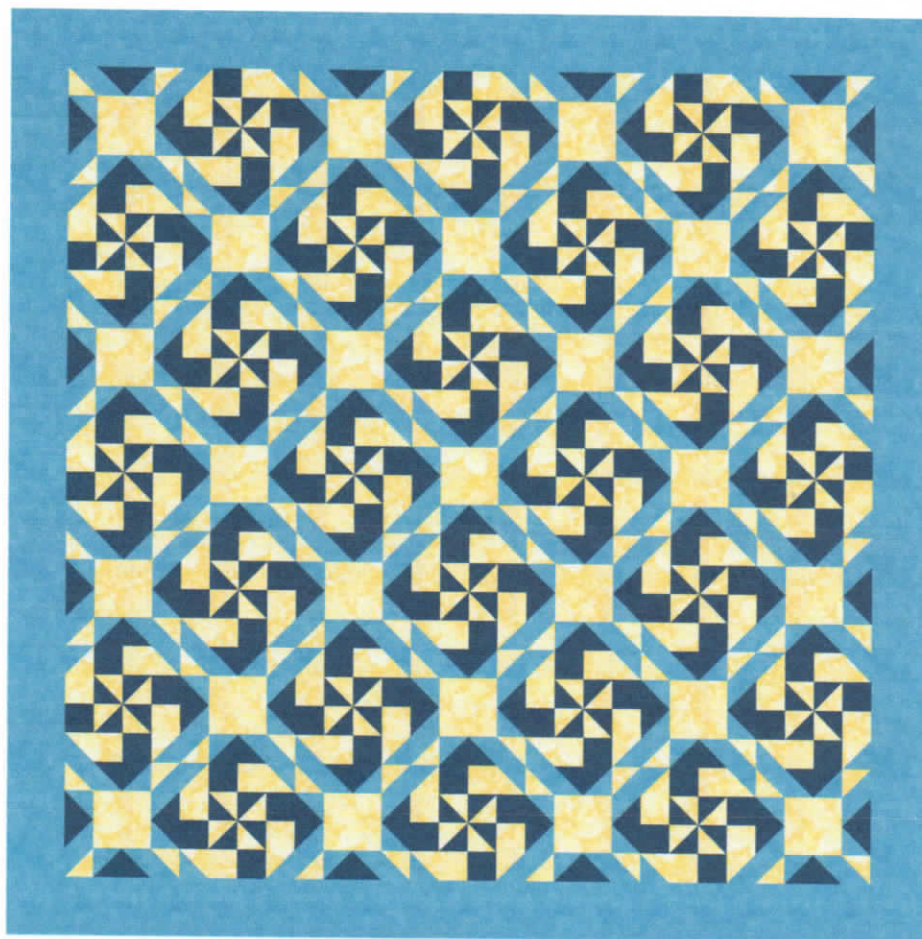


## Bluebells & Jonquils



Finished Size: Approximately 96" x 96"

### Fabric Requirements

Fabric A (dark print)	2 1/2	yards
Fabric B (medium print)	4 1/4	yards
Fabric C (light print)	3 1/2	yards
Backing:	7 1/2	yards
Binding:	3/4	yard

**Like Sew**  
[www.LikeSew.com](http://www.LikeSew.com)  
Copyright 2007

## Cutting Directions

1. Fabric A: Cut 9 strips  $3\frac{1}{2}$ " x width of the fabric. Cut the strips into 96 squares measuring  $3\frac{1}{2}$ " x  $3\frac{1}{2}$ ". Cut 15 strips  $3\frac{7}{8}$ " x width of the fabric. Cut the strips into 148 squares measuring  $3\frac{7}{8}$ " x  $3\frac{7}{8}$ ".
2. Fabric B: Cut 20 strips  $3\frac{7}{8}$ " x width of the fabric. Cut the strips into 198 squares measuring  $3\frac{7}{8}$ " x  $3\frac{7}{8}$ ". Cut 11 strips  $6\frac{1}{2}$ " x width of the fabric. Set these strips aside for the border.
3. Fabric C: Cut 18 strips  $3\frac{1}{2}$ " x width of the fabric. Cut the strips into 196 squares measuring  $3\frac{1}{2}$ " x  $3\frac{1}{2}$ ". Cut 15 strips  $3\frac{7}{8}$ " x width of the fabric. Cut the strips into 146 squares measuring  $3\frac{7}{8}$ " x  $3\frac{7}{8}$ ".
4. Binding: Cut 10 strips  $2\frac{1}{2}$ " x width of the binding fabric. Set these strips aside for the binding.

## Half-square Triangle Instructions

1. Draw a diagonal line on the wrong side of the lighter colored fabric.
2. Place this square, right sides together, with the other square to be sewn.
3. Sew a seam exactly  $\frac{1}{4}$ " on BOTH sides of the drawn line as shown:



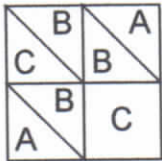
4. Cut directly on the drawn line.
5. Press the seams open.
6. Clip the "dog ears" to make a perfect square:



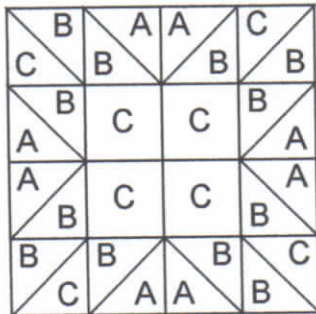
# Piecing Directions

## Block 1

1. Draw a diagonal line on the back of each Fabric A square measuring  $3\frac{7}{8}$ " x  $3\frac{7}{8}$ ". Match 100 of the squares together with 100 squares of the same size cut from fabric B. Draw a diagonal line on the back of each remaining Fabric B square measuring  $3\frac{7}{8}$ " x  $3\frac{7}{8}$ ". Match 50 of the squares together with 50 squares of the same size cut from fabric C.
2. Follow the directions for making half-square triangles on page 2. You will have 300 half-square triangles when this step is completed. 200 will be with fabrics A and B, 100 will be with fabrics B and C.
3. Following the diagram below, sew four squares together to form a block. All of the blocks are made exactly this same way. Continue with the remaining squares until you have 100 completed blocks.

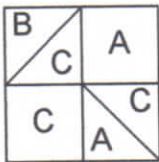


4. Following the diagram below, take four of the completed blocks in the previous step and sew them together in the exact order shown. This will make a larger block. There will be 25 of these larger blocks in the quilt. Continue with the remaining smaller blocks until you have 25 completed larger blocks.

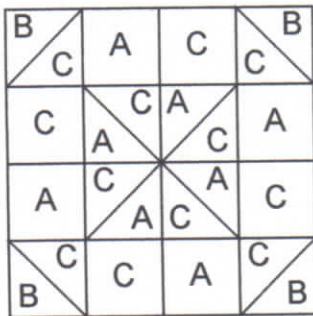


## Block 2

5. Draw a diagonal line on the back of each Fabric A square measuring  $3\frac{7}{8}$ " x  $3\frac{7}{8}$ ". Match 48 of the squares together with 48 squares of the same size cut from fabric C. Draw a diagonal line on the back of each Fabric B square measuring  $3\frac{7}{8}$ " x  $3\frac{7}{8}$ ". Match 48 of the squares together with 48 squares of the same size cut from fabric C.
6. Follow the directions for making half-square triangles on page 2. You will have 192 half-square triangles when this step is completed. 96 will be with fabrics A and C, 96 will be with fabrics B and C.
7. Following the diagram below, sew four squares together to form a block. All of the blocks are made exactly this same way. Continue with the remaining squares until you have 96 completed blocks.



8. Following the diagram below, take four of the completed blocks in the previous step and sew them together in the exact order shown. This will make a larger block. There will be 24 of these larger blocks in the quilt. Continue with the remaining smaller blocks until you have 24 completed larger blocks.





## Quilt Assembly

1. When assembling the quilt top using two different blocks, the top row will be made by sewing block 1 to block 2, and continuing in that order until the desired number of blocks per row are sewn.
2. The next row will be sewn exactly the same way, except that the first block in the row will be block 2.
3. Continue alternating the beginning block for each row until the number of rows desired are sewn.
4. Now join the completed rows together, making sure that the beginning block of each row alternates as you go down the side of the quilt top.
5. Sew border strips onto both sides of the quilt. Press. Now sew the remaining border strips onto both the top and the bottom of the quilt.
6. Layer the quilt back, the batting, and the quilt top together, in that order.
7. Machine or hand quilt as desired.
8. Use the 2 1/2" strips of binding fabric cut earlier to bind the quilt using your favorite method.