



FILATURA
DI CROSA

Zara

25th Anniversary



TSC
yarns

• TAHKI STACY CHARLES

www.tahkistacycharles.com

Caterina Top-Down Pullover

designed by Irina Poludnenko



FILATURA DI CROSA

ZARA: 25th Anniversary Collection



Sizes

Small (**Medium**, Large, **XL**, 2X, **3X**)

Knitted Measurements

Bust 40 (**43¼**, 46½, **49½**, 52¾, **56**)/ 101.5 (**110**, 118, **125.5**, 134, **142**) cm

Length (from center back) 20 (**20¾**, 21¼, **22**, 22¾, **23¼**)/51 (**52.5**, 54, **56**, 58, **59**) cm

Materials

- 9 (**10**, 11, **12**, 13, **14**) balls Filatura Di Crosa **ZARA CHINÉ** 100% superfine merino wool (1.75oz/50g; 137yds/125m) in **color #27 silver chiné**
 - One size 7 (4.5mm) circular needle, 32"/80cm long
- OR SIZE TO OBTAIN GAUGE**
- One size 7 (4.5mm) circular needle, 16"/40cm long for Sleeves
 - Stitch holders
 - Stitch markers in two colors
 - Yarn needle

GAUGE

20 sts and 24 rnds = 4"/10 cm in Stockinette stitch

TAKE TIME TO CHECK GAUGE

SPECIAL ABBREVIATION

M1: Make 1 (inc) – Lift strand between needles to LH needle from front to back and work strand through the back loop, twisting it to prevent a hole, [knit or purl as indicated by pattern st].

PATTERN STITCHES

Stockinette stitch in the round (St st) Knit all sts every row.

Garter stitch (Garter st) Knit one rnd, purl one rnd.

K2, p2 rib

NOTE: Neckband is worked first, then sts are picked up to work the BODY seamlessly from the top-down in one piece.

NECKBAND

Cast on 25 sts.

Row 1 (RS) Sl1, [k2, p2] 3 times, k11, p1.

Row 2 (WS) Sl1, k11, [k2, p2] 3 times, p1.

Rep Rows 1-2 until Band measures 42 (**44**, 46, **48**, 50, **52**)" at beg of RS row (in k2, p2 rib). Bind off all sts in patt. Sew cast-on edge to bound-off edge.

BODY

Place 4 markers along ribbed edge of Neckband as follows: first after 7 (**7½**, **7¾**, **8**, **8½**, **8¾**)", second after 7 (**7¼**, **7¾**, **8**, **8¼**, **8¾**)", third after 14 (**14½**, 15, **16**, **16½**, **17**)", and fourth after 7 (**7¼**, **7¾**, **8**, **8¼**, **8¾**)".

With RS facing and longer circular needle, pick up and knit 33 (**34**, 35, **36**, 37, **38**) sts from Neckband seam to first marker, 30 (**32**, 34, **36**, 38, **40**) sts between first and second markers, 66 (**68**, 70, **72**, 74, **76**) sts between second and third markers, 30 (**32**, 34, **36**, 38, **40**) sts between third and fourth markers, and 33 (**34**, 35, **36**, 37, **38**) sts from fourth marker to seam. Pm (in a different color) and join for working in the rnd.

Shape Yoke

Rnd 1 [Knit to 3 sts before marker, p2, k1, sm, k1, p2] 4 times, knit to end of rnd.

Inc Rnd 2 [Knit to 3 sts before marker, M1, p2, k1, sm, k1, p2, M1] 4 times, knit to end of rnd – 8 sts inc. Rep these two rnds 14 (**16**, 18, **20**, 22, **24**) more times – 312 (**336**, 360, **384**, 408, **432**) sts.



Divide for Body and Sleeves

Next Rnd Knit to first marker, place 60 (**66**, 72, **78**, 84, **90**) sts between first and second markers on holder for Right Sleeve, cast on 4 (**6**, 8, **10**, 12, **14**) sts, k96 (**102**, 108, **114**, 120, **126**) between second and third markers for Front, place next 60 (**66**, 72, **78**, 84, **90**) sts between third and fourth markers on holder for Left Sleeve, cast on 4 (**6**, 8, **10**, 12, **14**) sts, knit to end of rnd – 200 (**216**, 232, **248**, 264, **280**) sts rem for Body. Remove all markers except for beg-of-rnd marker.

Work even in St st for 10".

Next Rnd Knit to last 25 (**27**, 29, **31**, 33, **35**) sts, pm for new beg of rnd, p25 (**27**, 29, **31**, 33, **35**), remove beg-of-rnd marker, p25 (**27**, 29, **31**, 33, **35**), pm, k50 (**54**, 58, **62**, 66, **70**), pm, p50 (**54**, 58, **62**, 66, **70**), pm, k50 (**54**, 58, **62**, 66, **70**). Keeping 50 (**54**, 58, **62**, 66, **70**) sts at center Front and Back in Garter st and rem 50 (**54**, 58, **62**, 66, **70**) sts at each side in St st, work even for 2". Bind off all sts knitwise.

SLEEVES

With RS facing and shorter circular needle, starting at center of underarm, pick up and knit 3 (**4**, 5, **6**, 7, **8**) sts along cast-on sts, k60 (**66**, 72, **78**, 84, **90**) sts from holder, pick up and knit 3 (**4**, 5, **6**, 7, **8**) sts along cast-on sts. Pm and join for working in the rnd.

Work even in St st for 10".

Next Rnd K10, pm, purl to last 10 sts, pm, k10.

Keeping center sts in Garter st and 10 sts at beg and end of rnd in St st, work even for 2". Bind off all sts knitwise.

FINISHING

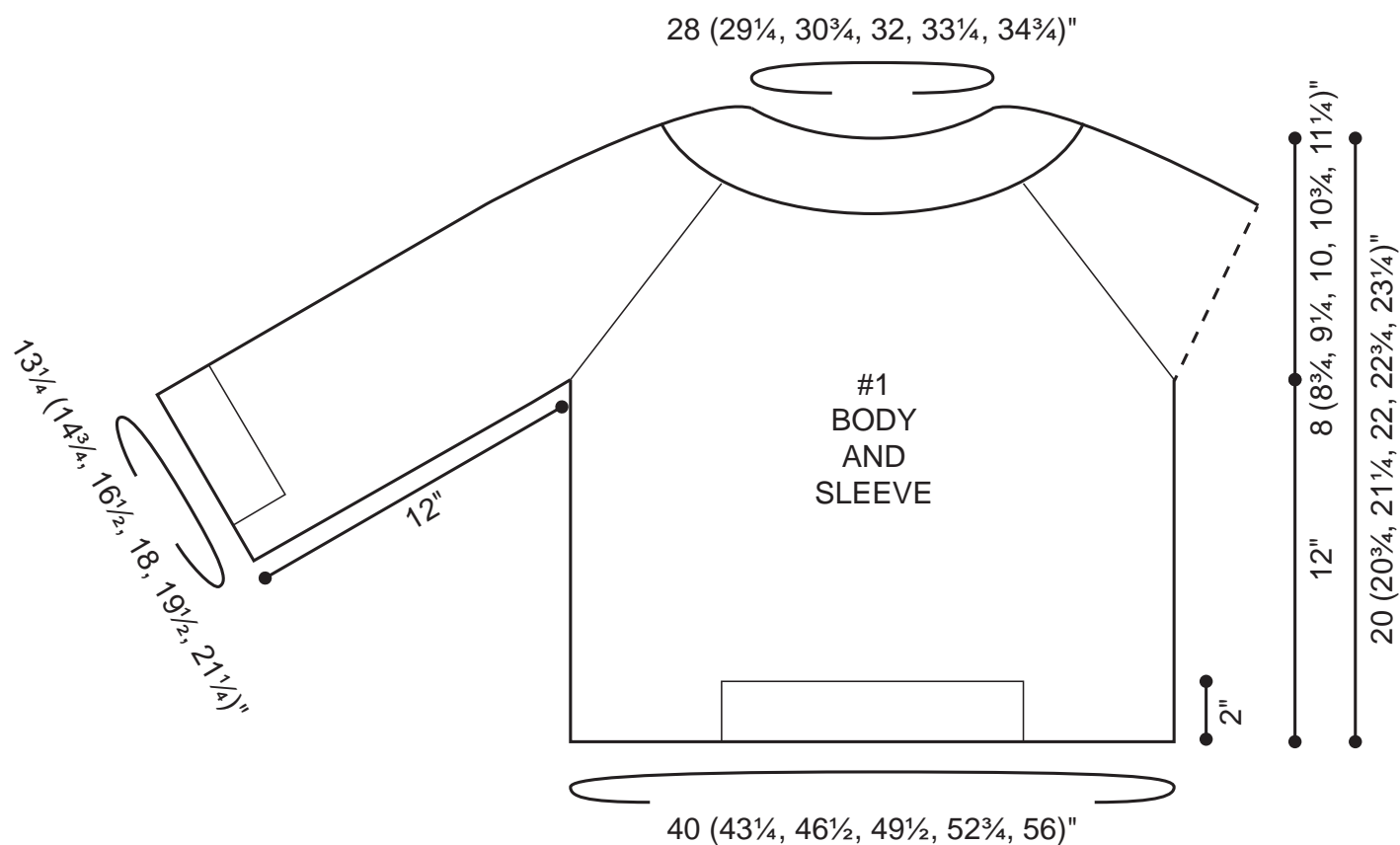
Weave in ends. Block piece to measurements.

ABBREVIATIONS

beg	begin(ning)
inc	increase(d)(s)(ing)
k	knit
p	purl
patt	pattern
pm(Pm)	place marker(s)
rem	remain(ed)(s)(ing)
rep	repeat(ed)(s)(ing)
rnd(s)	round(s)
RS	right side
sl	slip
sm	slip marker
st(s)	stitch(es)
WS	wrong side



Originally published Fall 2014



Twisted Rib Tunic

designed by Filatura Di Crosa Design Studio



ZARA: 25th Anniversary Collection



Sizes

Small (**Medium**, Large, **XL**)

Knitted Measurements

Bust 38½ (**41¾**, 45, **48**)"/

98 (**106**, 114, **122**) cm

Length 30 (**31½**, 33, **34½**)"/

76 (**80**, 84, **88**) cm

Materials

- 12 (**15**, 18, **21**) balls Filatura Di Crosa **ZARA PLUS** 100% extrafine merino wool (1.75oz/50g; 77yds/70m) in **color #448 taupe** or substitute **color #404 oatmeal**
- One pair size 8 (5mm) needles
- OR SIZE TO OBTAIN GAUGE**
- One pair size 7 (4.5mm) needles
- Stitch markers
- Stitch holders
- Yarn needle

GAUGE

19 sts and 24 rows = 4"/10cm in Fancy Pattern using larger needles

TAKE TIME TO CHECK GAUGE

SPECIAL ABBREVIATION

P2tog Purl 2 together (dec) – Purl 2 sts tog through the front loops.

PATTERN STITCHES

K1, p1 rib (multiple of sts + 1)

Fancy Pattern (odd number sts)

Row 1 (RS) Purl.

Row 2 (WS) *P1, k1; rep from * to last st, p1. Repeat Rows 1 and 2 for Fancy Pattern.

NOTE: Left side and Right side refer to the left-hand side and to the right-hand side of the garment respectively, as you are wearing it.

BACK

With smaller needles, cast on 93 (**101**, 109, **115**) sts.

(RS) Begin k1, p1 rib; work 10 rows.

(RS) Change to larger needles and Fancy Pattern. Work even until piece measures 22 (**23**, 24, **25**)" from beginning, end with a WS row.

Shape Armholes

(RS) Bind off 3 (**3**, 4, **4**) sts at beginning of next 2 rows, 1 st at beginning of next 8 (**10**, 10, **10**) rows – 79 (**85**, 91, **97**) sts remain.

Work even until Armholes measure $7\frac{7}{8}$ (**8** $\frac{1}{2}$, 9, **9** $\frac{5}{8}$)" from beginning, end with a WS row. Bind off all sts.

FRONT

Work as for BACK until piece measures $19\frac{1}{4}$ (**20** $\frac{1}{2}$, 21 $\frac{3}{4}$, **22** $\frac{3}{4}$)" from beginning, end with a WS row.

Place a marker at center st.

Shape Neck

(RS) Work across to marker, join a second ball of yarn and bind off center st, work to end – 46 (**50**, 54, **57**) sts remain on each side.

With both sides at the same time.

Work 1 row even.

Decrease Row (RS) Left side: Work to last 2 sts, p2tog. **Right side:** p2tog, work to end.

Work 1 row even.

Repeat last 2 rows twice more.

Repeat Decrease Row.

Work 3 rows even.



Repeat last 4 rows 8 (**9**, 10, **11**) more times.

AT SAME TIME, when piece measures 22 (**23**, 24, **25**)" from beginning, end with a WS row, start Armhole shaping.

Shape Armholes

Work as for BACK.

When Neck and Armhole Shaping are completed, 27 (**29**, 31, **33**) sts remain for each shoulder.

Work even until Armholes measure $7\frac{7}{8}$ (**8** $\frac{1}{2}$, 9, **9** $\frac{5}{8}$)" from beginning, end with a WS row. Bind off all sts.

NECKBAND

With smaller needles, cast on 171 (**177**, 183, **189**) sts.

(RS) Begin k1, p1 rib; work 8 rows.

Place all sts on holder.

ARMBANDS

With smaller needles, cast on 103 (**109**, 115, **121**) sts.

(RS) Begin k1, p1 rib; work 8 rows.

Place all sts on holder.

FINISHING

Block pieces to measurements. Sew shoulder seams.

With RS facing and yarn needle, backstitch sts from NECKBAND holder one by one to Neck edge, string at center of FRONT V-neck.

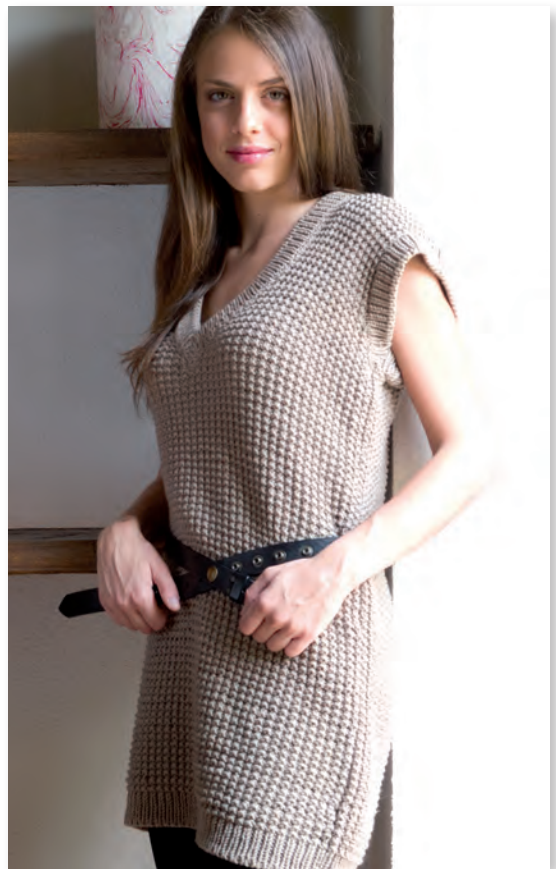
Shape V-point

Fold NECKBAND ends to WS, forming a small triangle and fix folded edges to center of FRONT, then fix triangle remaining edges to

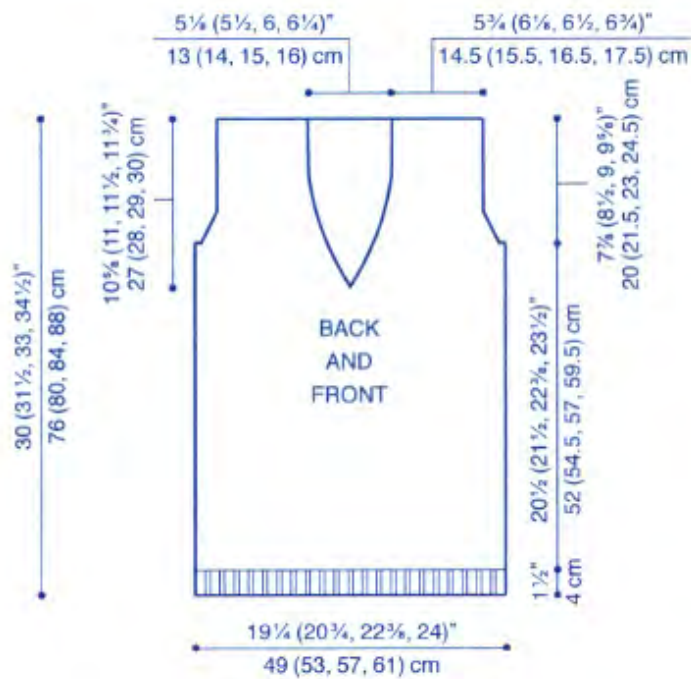
WS. With RS facing and yarn needle, backstitch sts from ARMBAND holders one by one to Armholes. Sew ARMBAND and side seams. Weave in ends.

ABBREVIATIONS

cm	centimeter
dec	decrease(d)(s)(ing)
k	knit
mm	millimeters
p	purl
rep	repeat(s)(ing)
RS	right side
st(s)	stitch(es)
tog	together
WS	wrong side



Originally published Fall 2011



Turtleneck Tunic Vest

designed by Filatura Di Crosa Design Studio



FILATURA DI CROSA

ZARA: 25th Anniversary Collection



Sizes

Small (**Medium**, Large, **XL**)

Knitted Measurements

Bust 31½ (**34**⁵/₈, 37³/₄, **40**⁷/₈)”/
80 (**88**, 96, **104**) cm

Length 24¾ (**26**, 27½, **28**⁷/₈)”/
63 (**66.5**, 70, **73.5**) cm

Materials

- 9 (**12**, 15, **18**) balls Filatura di Crosa **ZARA** 100% extrafine merino wool (1.75oz/50g; 137yds/125m) in **color #1706 dark magenta** or substitute **color #1783 dark fuchsia**
 - One pair size 6 (4mm) needles
- OR SIZE TO OBTAIN GAUGE**
- One pair size 4 (3.5mm) needles
 - Cable needle
 - Yarn needle

GAUGE

23 sts and 31 rows = 4"/10 cm St st and Fancy Pattern with larger needles

TAKE TIME TO CHECK GAUGE

SPECIAL ABBREVIATIONS

C4F Cable 4 Front – Slip 2 sts to cable needle and hold in front, k2, k2 from cable needle.

C4B Cable 4 Back– Slip 2 sts to cable needle and hold in back, k2, k2 from cable needle.

K1 tbl Knit 1 through back loop – Knit 1 stitch through its back loop, inserting the needle into the back of the stitch from the left-hand side.

K2tog Knit 2 together (dec) – Knit 2 sts tog through the front loops.

K3tog Knit 3 together (double dec) – Knit 3 sts tog through the front loops.

MIK M1 knitwise (inc) – Lift strand between needles to left-hand needle and knit it through back loop, twisting it.

P1 tbl Purl 1 through back loop – Purl 1 stitch through its back loop, inserting the needle into the back of the stitch from the left-hand side.

SKP (Left-leaning dec) – Slip 1, k1, psso.

PATTERN STITCHES

K2, P2 rib (multiple of 4 sts + 2)

Reverse Stockinette stitch (Rev St st) Purl on RS, knit on WS.

Stockinette stitch (St st) Knit on RS, purl on WS.

Twisted 1/1 rib

Row 1 (RS) * k1 tbl, p1 tbl *, rep from * to *.

Row 2 (WS) * k1 tbl, p1 tbl *, rep from * to *.

Repeat Rows 1-2 for Twisted 1/1 rib.

Horizontal ribs

* 4 rows in St st, 4 rows in Rev St st *, rep from * to *.

Fancy Pattern (worked over 22 sts)

Row 1 (RS) P3,C4F, p3, k2, p3, C4B, p3

Row 2 and even rows (WS) Work sts as they face you.

Row 3 (RS) P3, k4, p3, k2, p3, k4, p3.

Row 5 (RS) P3, C4F, p3, k2, p3, C4B, p3.

Row 7 (RS) P3, yo, k3, SKP, p2, k2, p2, k2tog, k3, yo, p3.

Row 9 (RS) P4, yo, k3, SKP, p1, k2, p1, k2tog, k3, yo, p4.

Row 11 (RS) P5, yo, k3, SKP, k2, k2 tog, k3, yo, p5.

Row 13 (RS) P5, k1, yo, k3, k2tog, SKP, k3, yo, k1, p5.

Row 15 (RS) P5, k2, yo, k2, k2tog, SKP, k2, yo, k2, p5.

Row 17 (RS) P5, k3, yo, k1, k2tog, SKP, k1, yo, k3, p5.

Row 19 (RS) P5, k4, yo, k2tog, SKP, yo, k4, p5.

Row 21 (RS) P5, C4B, p1, k2, p1, C4F, p5.

Row 23 (RS) P5, k4, p1, k2, p1, k4, p5.

Row 25 (RS) P5, C4B, p1, k2, p1, C4F, p5.

Row 27 (RS) P4, k2tog, k3, yo, p1, k2, p1, yo, k3, SKP, p4.

Row 29 (RS) P3, k2tog, k3, yo, p2, k2, p2, yo, k3, SKP, p3.

Row 31 (RS) P2, k2tog, k3, yo, p3, k2, p3, yo, k3, SKP, p2.

Row 33 (RS) P1, SKP, k3, yo, k1, p3, k2, p3, k1, yo, k3, k2tog, p1.

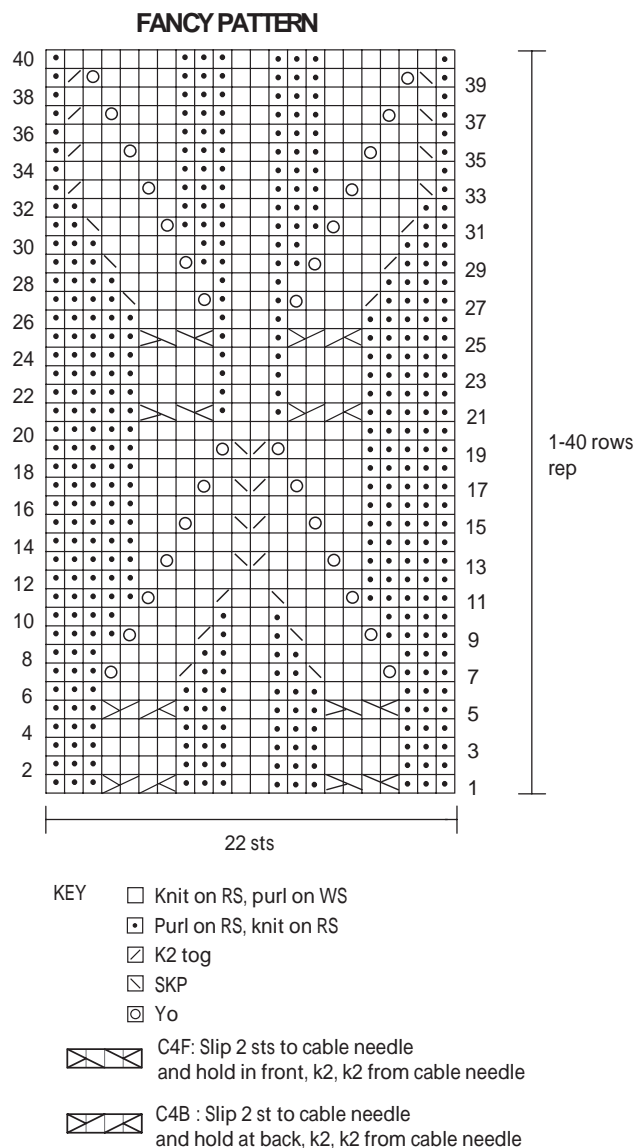
Row 35 (RS) P1, SKP, k2, yo, k2, p3, k2, p3, k2, yo, k2, k2tog, p1.

Row 37 (RS) P1, SKP, k1, yo, k3, p3, k2, p3, k3, yo, k1, k2tog, p1.

Row 39 (RS) P1, SKP, yo, k4, p3, k2, p3, k4, yo, k2tog, p1.

Row 40 Work sts as they face you.

Repeat Rows 1 - 40 for Fancy Pattern.



BACK

With smaller needles cast on 110 (**120**, 130, **140**) sts.
(RS) Begin k2, p2 rib starting and ending with k2. Work even until piece measures 6 $\frac{5}{8}$ " from beg, end with a WS row.

(RS) With larger needles cont in St st across the 1st row dec 17 sts evenly spaced – 93 (**103**, 113, **123**) sts.

Work even until piece measures 9 $\frac{7}{8}$ (**10** $\frac{1}{4}$, 10 $\frac{5}{8}$, **11**)" from beg, end with a WS row.

Decrease Row (RS) K1, SKP, work to the last 3 sts, end with k2tog, k1 – 91 (**101**, 111, **121**) sts rem. Work even until piece measures 16 $\frac{1}{8}$ (**16** $\frac{7}{8}$, 17 $\frac{3}{4}$, **18** $\frac{1}{2}$)" from beg, end with a WS row.

Sleeves

Increase Row (RS) k1, M1K, work to the next to last st, end with M1K, k1.

Work 3 rows.

Rep last 4 rows 3 more times – 99 (**109**, 119, **129**) sts.

Increase row (RS) k1, M1K, to the next to last st, end with M1K, k1.

Work 1 row.

Rep last 2 rows 3 (**3**, 4, **5**) more times – 107 (**117**, 129, **141**) sts ending with a WS row; before turning work, cast on 8 sts – 115 (**125**, 137, **149**) sts.

Increase Row (RS) Work to the last st, cast on 8 sts – 123 (**133**, 145, **157**) sts.

(WS) Work 8 sts in 1/1 twisted rib starting with k1 tbl, in St st to the last 8 sts, 8 sts in 1/1 twisted rib starting with k1 tbl.

Work even until piece measures 8 $\frac{5}{8}$ (**9** $\frac{1}{8}$, 9 $\frac{7}{8}$, **10** $\frac{3}{8}$)" from beg of sleeves.

FRONT

With smaller needles cast on 102 (**112**, 122, **132**) sts.

(RS) Begin k2, p2 rib.

Work even until piece measures 6 $\frac{5}{8}$ " from beg, end with a WS row.

(RS) With larger needles set Pattern as foll working 12 dec evenly spaced: Work 12 (**14**, 16, **18**) sts in St st, 22 sts in Fancy Pattern, 56 (**64**, 72, **80**) sts in St st – 90 (**100**, 110, **120**) sts rem. Work even until piece measures 16 $\frac{1}{8}$ (**16** $\frac{7}{8}$, 17 $\frac{3}{4}$, **18** $\frac{1}{2}$)" from beg, end with a WS row.

Sleeves

Increase Row (RS) K1, M1K, work to the next to last st, end with M1K, k1.

Work 3 rows even.

Rep last 4 rows 3 more times – 98 (**108**, 118, **128**) sts.

Increase Row (RS) K1, M1K, work to the next to last st, end with M1K, k1.

Work 1 row even.

Rep last 2 rows 3 (**3**, 4, **5**) more times – 106 (**118**, 128, **140**) sts ending with a WS row; before turning work, cast on 8 sts – 114 (**126**, 136, **148**) sts.



Increase Row (RS) Work to the last st, cast on 8 sts – 122 (**134**, 144, **156**) sts.

(WS) Work 8 sts in 1/1 twisted rib starting with k1 tbl, in St st to the last 8 sts, 8 sts in 1/1 twisted rib starting with k1 tbl.

Work even until piece measures 4 $\frac{3}{4}$ (**5** $\frac{1}{4}$, 5 $\frac{7}{8}$, **6** $\frac{3}{8}$)" from beg of Sleeves, end with a WS row.

Shape Neck

(RS) Work 52 (**57**, 61, **66**) sts, join a second ball of yarn and bind off center 18 (**20**, 22, **24**) sts then work rem 52 (**57**, 61, **66**) sts. End each part separately – 52 (**57**, 61, **66**) sts rem.

Right Front

(WS) Work sts as they face you.

Double Decrease Row (RS) K2, Sl 1-k2tog-ssso, work foll sts in pattern.

Work 3 rows even.

Rep last 4 rows 2 more times – 46 (**51**, 55, **60**) sts rem.

Decrease Row (RS) K2, SKP, work foll sts in pattern.

Work 1 row even.

Rep last 2 rows 5 (**6**, 6, **6**) more times – 40 (**44**, 48, **53**) sts rem.

Work even until Sleeves measure 8 $\frac{5}{8}$ (**9** $\frac{1}{8}$, 9 $\frac{7}{8}$, **10** $\frac{3}{8}$)" from beg. Bind off all sts.

Left Front

Work as for Right Front.

For Neck shaping, in row with double dec work to the last 5 sts end with k3tog, k2; in row with dec work to the last 4 sts end with k2tog, k2.

COLLAR

With larger needles cast on 120 (**124**, 128, **132**) sts.
(RS) Begin horizontal ribs.
Work even until piece measures 7" from beg.
Bind off all sts.

BELT (optional)

With larger needles cast on 9 sts.
(RS) Begin 1/1 twisted rib.
Work even until piece measures 63 (**64½**, 66, **67¾**)" from beg. Bind off all sts.

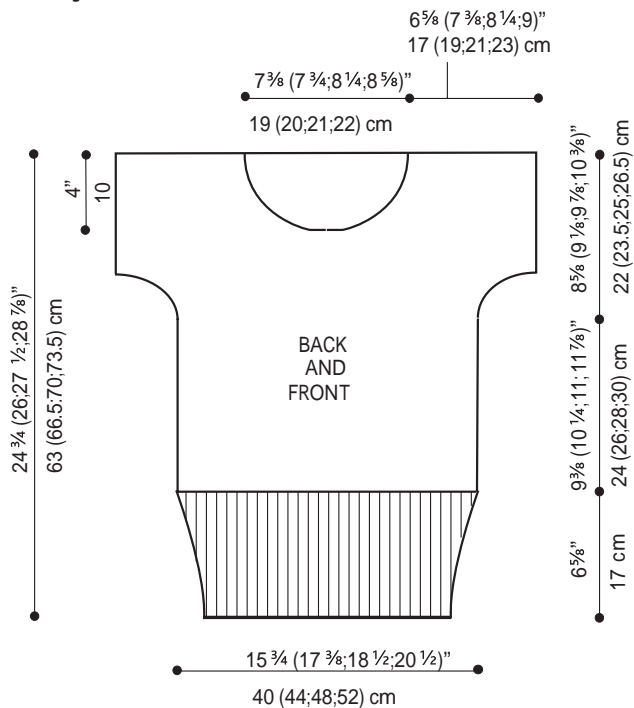
FINISHING

Block pieces to measurements. Sew Shoulder seams.

Sew side and Sleeve seams. Set in COLLAR at Neckline; sew back seam of COLLAR.

ABBREVIATIONS

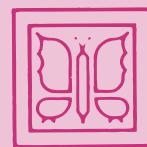
beg begin(ning)
cm centimeter
dec decrease(d)(s)(ing)
foll follow(ed)(s)(ing)
inc increase(d)(s)(ing)
k knit
mm millimeters
p purl
psso pass slipped stitch over
rem remain(ing)
rep repeat(s)(ing)
RS right side
st(s) stitch(es)
tbl through back loop
tog together
WS wrong side
yo yarn over



Originally published Fall 2010

Eyelet-Stripe Boatneck

designed by Filatura Di Crosa Design Studio



FILATURA DI CROSA

ZARA: 25th Anniversary Collection



INTERMEDIATE



Sizes

Small (**Medium**, Large, **XL**)

Knitted Measurements

Bust 33 (**36** $\frac{1}{4}$, 39 $\frac{1}{4}$, **42** $\frac{1}{2}$)"/
84 (**92**, 100, **108**) cm

Length 19 $\frac{3}{4}$ (**21** $\frac{1}{4}$, 22 $\frac{3}{4}$, **24** $\frac{1}{2}$)"/
50 (**54**, 58, **62**) cm

Materials

- 8 (**11**, 14, **17**) balls Filatura Di Crosa **ZARA** 100% superfine merino wool (1.75oz/50g; 137yds/125m) in **color #1940 cyclamen**
 - One pair size 6 (4mm) needles
- OR SIZE TO OBTAIN GAUGE**
- Stitch markers
 - Crochet hook size D-3 (3.25mm)
 - Yarn needle

GAUGE

22 sts and 29 rows = 4"/10cm in Stockinette stitch

TAKE TIME TO CHECK GAUGE

SPECIAL TECHNIQUES

chain (ch)

slip stitch (sl st)

single crochet (sc): Working from right to left, insert hook into the next st or ch, yarn over, draw yarn through this st (2 lps on hook), yarn over, draw yarn through 2 lps on hook.

SPECIAL ABBREVIATIONS

K2tog: Knit 2 together (dec) – Knit 2 sts tog through the front loops.

M1K: M1 knitwise (inc) – Lift strand between needles to left-hand needle and knit it through back loop, twisting it.

SK2P: (2 sts dec) Slip 1, knit 2 sts together, psso.

SKP (Left-leaning dec) – Slip 1, k1, psso.

PATTERN STITCHES

K1, p1 rib (multiple of 2 sts/2 sts + 1)

Stockinette stitch (St st) Knit on RS, purl on WS.

Lace Pattern (multiple of 3 sts + 1)

Row 1 (RS) K1, * yo, SK2P; rep from * to end.

Rows 2 and 4 (WS) Purl.

Row 3 (RS) * SK2P, yo; rep from * to last st, k1. Repeat Rows 1-4 for Lace Pattern.

Stripe Pattern (multiple of 3 sts + 1)

Rows 1-12 (12, 14, 14) Work in Lace Pattern.

Rows 13 (13, 15, 15) to 24 (26, 28, 30) Work in St st.

Repeat Rows 1-24 (26, 28, 30) for Stripe Pattern.

BACK

Cast on 92 (101, 110, 119) sts.

(RS) Begin k1, p1 rib; work 2 rows.

(RS) Change to St st.

Work even until piece measures 13¾ (14¾, 15¾, 16¾)" from beginning, end with a WS row.

Shape Armholes

(RS) Bind off 2 sts at beginning of next 2 rows – 88 (99, 106, 115) sts remain.

Decrease Row (RS) K4, k2tog, work to last 6 sts, SKP, k4.

Work 1 row even.

Repeat Decrease Row.



Work 3 rows even.

Repeat last 4 rows once more.

Repeat Decrease Row.

Work 1 row even.

Repeat last 2 rows twice more.

Repeat Decrease Row.

Work 3 rows even.

Repeat last 4 rows 5 (6, 7, 8) more times.

Repeat Decrease Row.

AT SAME TIME, when Armholes measure 5½ (5¾, 6¼, 6¾)" from beginning, start Neck shaping. Place a marker each side of center 40 (43, 46, 49) sts.

Shape Neck

(RS) Work as established across to marker; join a second ball of yarn and bind off center 40 (43, 46, 49) sts, work to end.

Work both sides at the same time.

When Armhole shaping is complete and Armholes measure 6 (6½, 7, 7¾)" from beginning, bind off remaining 11 (13, 15, 17) sts for each shoulder.

FRONT

Cast on 92 (101, 110, 119) sts.

(RS) Begin k1, p1 rib; work 2 rows.

(RS) Change to St st; work 2 rows.

(RS) K2, work Row 1 of Stripe Pattern over next 88 (97, 106, 115) sts, k2.

(WS) P2, work Row 2 of Stripe Pattern over next 88 (97, 106, 115) sts, p2.

Continue in pattern as established, working next rows of Stripe Pattern.

Work even until piece measures $13\frac{3}{4}$ (**14 $\frac{3}{4}$** , **15 $\frac{3}{4}$** , **16 $\frac{3}{4}$**)" from beginning, end with a WS row.

Shape Armholes

Work as for BACK.

AT SAME TIME, when Armholes measure $4\frac{3}{4}$ (**5 $\frac{1}{4}$** , **5 $\frac{1}{2}$** , **6**)" from beginning, start Neck shaping. Place a marker each side of center 30 (**33**, **36** **39**) sts.

Shape Neck

(RS) Work as established across to marker; join a second ball of yarn and bind off next 30 (**33**, **36**, **39**) sts, work to end.

Work both sides at the same time.

Bind off 3 sts once, 1 st twice at each Neck edge every other row.

When Armhole shaping is complete and Armhole measures 6 (**6 $\frac{1}{2}$** , **7**, **7 $\frac{3}{4}$**)" from beginning, bind off remaining 11 (**13**, **15**, **17**) sts for each shoulder.

SLEEVES

Cast on 50 (**55**, **59**, **64**) sts.

(RS) Begin k1, p1 rib; work 2 rows.

(RS) Change to St st; work 2 rows.

(RS) Knit 2 (**3**, **2**, **3**) sts, work Row 1 of Lace Pattern over next 46 (**49**, **55**, **58**) sts, knit 2 (**3**, **2**, **3**) sts.

(WS) Purl 2 (**3**, **2**, **3**) sts, work Row 2 of Lace Pattern over next 46 (**49**, **55**, **58**) sts, purl 2 (**3**, **2**, **3**) sts.

Continue in pattern as established, working next rows of Lace Pattern.

Work 24 (**24**, **28**, **28**) more rows.

(RS) Change to St st.

Work even until piece measures $7\frac{7}{8}$ (**7 $\frac{7}{8}$** , **7 $\frac{7}{8}$** , **7**)" from beginning, end with a WS row.

Shape Sleeve

Increase Row (RS) Work 2 sts M1K, work to last 2 sts, M1K, work next 2 sts.

Work 9 rows even.

Repeat last 10 rows 3 (**4**, **5**, **6**) more times – 58 (**65**, **71**, **78**) sts.

Work even until piece measures $15\frac{3}{4}$ (**16 $\frac{1}{4}$** , **17**, **17 $\frac{1}{2}$**)" from beginning end with a WS row.

Shape Cap

(RS) Bind off 2 sts at beginning of next 2 rows – 54 (**61**, **67**, **74**) sts remain.

Decrease Row (RS) K4, k2tog, work to last 6 sts, SKP, k4.

Work 1 row even.

Repeat last 2 rows 18 (**21**, **23**, **25**) more times – 14, (**17**, **19**, **22**) sts remain.

Work even until piece measures $22\frac{1}{2}$ (**24 $\frac{1}{4}$** , **26**, **27 $\frac{3}{4}$**)" from beginning. Bind off all sts.

FINISHING

Block pieces to measurements.

Sew edges of last 10 (**14**, **18**, **22**) rows of Sleeves to relevant Shoulder of FRONT and BACK.

Neck Edging

Rnd 1 (RS) With crochet hook, join yarn at BACK Left Shoulder seam; ch 1 (counts as sl st), and work 119 (**129**, **139**, **149**) sc evenly around Neck, sl st in first ch to join.

Rnd 2 Ch 4 (counts as sc + ch 3), skip 1 sc, *1 sc in next st, ch 3, skip 1 sc; rep from * around; sl st in first ch to join. Fasten off.

Sew side seams. Sew SLEEVE seams and set in SLEEVES. Weave in ends.

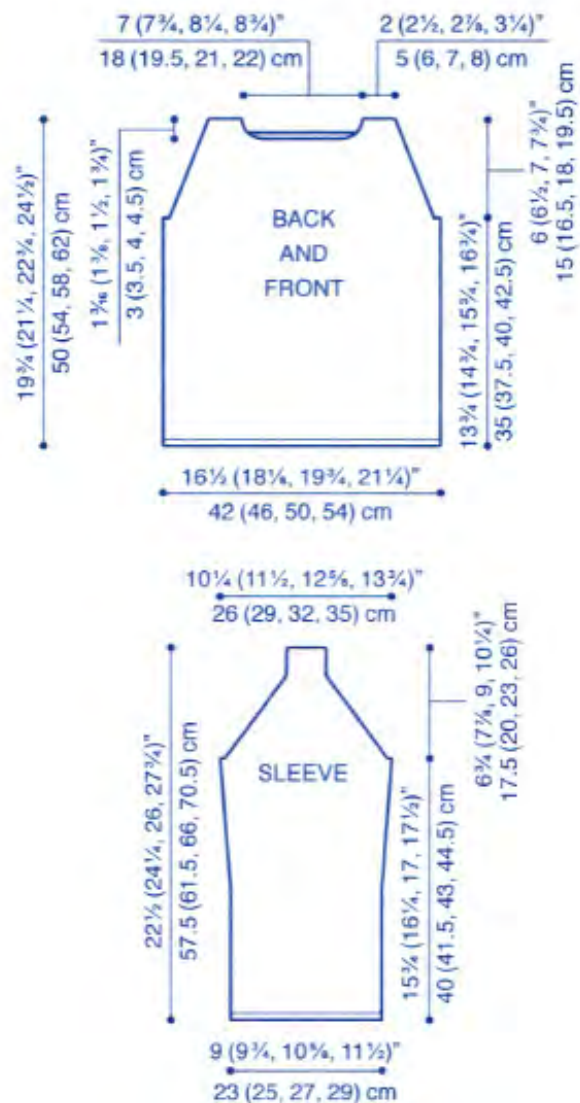
ABBREVIATIONS & SCHEMATICS ON
NEXT PAGE



Originally published Fall 2011

ABBREVIATIONS

cm	centimeter
dec	decrease(d)(s)(ing)
inc	increase(d)(s)(ing)
k	knit
lp(s)	loop(s)
mm	millimeters
p	purl
psso	pass slipped stitch over
rep	repeat(s)(ing)
rnd(s)	round(s)
RS	right side
sc	single crochet
sl	slip
st(s)	stitch(es)
tog	together
WS	wrong side
yo	yarn over



Ribbed Turtleneck Vest

designed by Filatura Di Crosa Design Studio



FILATURA DI CROSA

ZARA: 25th Anniversary Collection



Sizes

Small (**Medium**, Large, **XL**)

Knitted Measurements

Bust 30³/₄ (**34**, 37, **40**¹/₈)"/

78 (**86**, 94, **102**) cm

Length 21³/₄ (**23**¹/₄, 24⁷/₈, **26**¹/₄)"/

55 (**59**, 63, **67**) cm

Materials

- 8 (**10**, 12, **14**) balls Filatura Di Crosa **ZARA** 100% superfine merino wool (1.75oz/50g; 137yds/125m) in **color #1490 dark denim heather**

- One pair size 7 (4.5mm) needles

OR SIZE TO OBTAIN GAUGE

- One size 7 (4.5mm) circular needle
- Stitch markers
- Stitch holders
- Yarn needle

GAUGES

30 sts and 28 rows = 4"/10cm in Fancy Rib stitch

10 sts = ¾"/2cm in Slip Stitch Rib

TAKE TIME TO CHECK GAUGES

SPECIAL ABBREVIATIONS

K2tog: Knit 2 together (dec) – Knit 2 sts tog through the front loops.

M1K: M1 knitwise (inc) – Lift strand between needles to left-hand needle and knit it through back loop, twisting it.

M1P: M1 purlwise (inc) – Lift strand between needles to left-hand needle and purl it through back loop, twisting it.

PATTERN STITCHES

K1, p1 rib (multiple of 2 sts + 1)

K1, p1 rib in the round (even number sts)

Fancy Rib stitch (multiple of 4 sts + 2)

Row 1 (RS) * P2, (sl1 knitwise, k1, psso, but before dropping the slipped st from the left-hand needle, knit into the back of it); rep from * to last 2 sts, p2.

Row 2 (WS) Repeat Row 1.

Repeat Rows 1 and 2 for Fancy Rib stitch.

Right-hand Slip Stitch Rib (panel of 10 sts):

Row 1 (RS) * sl 1 purlwise, k1; rep from * 4 more times.

Row 2 (WS) Repeat Row 1.

Repeat Rows 1 and 2 for Right-hand Slip Stitch Rib.

Left-hand Slip Stitch Rib (panel of 10 sts):

Row 1 (RS) * K1, sl 1 purlwise; rep from * 4 more times.

Row 2 (WS) Repeat Row 1.

Repeat Rows 1 and 2 for Left-hand Slip Stitch Rib.

BACK

Cast on 119 (**131, 143, 155**) sts.

(RS) Begin k1, p1 rib; work 21 rows.

Row 22 (WS) Work in k1, p1 rib to last 2 sts, k2tog – 118 (**130, 142, 154**) sts remain.

(RS) Change to Fancy Rib stitch.

Work even until piece measures 13 (**14, 15, 16**)" from beginning, end with a WS row.

Shape Armholes

(RS) Bind off 3 (**4, 5, 6**) sts, M1P (**M1P, M1K, M1P**), work across to last 4 (**5, 6, 7**) sts, M1P (**M1P, M1K, M1P**), work last 4 (**5, 6, 7**) sts.

(WS) Bind off 3 (**4, 5, 6**) sts, work to end – 114 (**124, 134, 144**) sts remain.



(RS) Work Row 1 of Right-hand Slip Stitch Rib over first 10 sts, work in Fancy Rib stitch across to last 10 sts, work Row 1 of Left-hand Slip Stitch Rib over last 10 sts.

(WS) Work Row 2 of Left-hand Slip Stitch Rib over first 10 sts, work in Fancy Rib stitch across to last 10 sts, work Row 2 of Right-hand Slip Stitch Rib over last 10 sts.

Continue in pattern as established until Armholes measure 8¾ (**9¼, 9¾, 10½**)" from beginning, end with a WS row.

Place a marker each side of center 42 (**46, 50, 54**) sts.

Shape Neck and Shoulders

(RS) Bind off 36 (**39, 42, 45**) sts; join a second ball of yarn, work next 42 (**46, 50, 54**) sts and place on holder; bind off next 36 (**39, 42, 45**) sts.

FRONT

Work as for BACK until piece measures 18½ (**19¾, 20¾, 22¾**)" from beginning, end with a WS row.

Place a marker each side of center 16 (**18, 20, 22**) sts.

Shape Neck

(RS) Work across to marker; join a second ball of yarn and bind off next 16 (**18, 20, 22**) sts, work to end. Work both sides at the same time. Bind off 2 sts 3 times, 1 st 7 (**8, 9, 10**) times at each Neck edge every other row – 36 (**39, 42, 45**) sts remain for each Shoulder.

Work even until Armholes measure 8¾ (**9¼, 9¾, 10½**)" from beginning. Bind off all sts.

FINISHING

Block piece to measurements. Sew Shoulder seams.

Collar

With RS facing and circular needle, pick up and knit 90 (**100**, 110, **120**) sts along Front Neck, knit 42 (**46**, 50, **54**) sts from BACK Neck holder.

(RS) Begin k1, p1 rib in the rnd.

Work even until Collar measures 6¾" from beginning.

Bind off all sts.

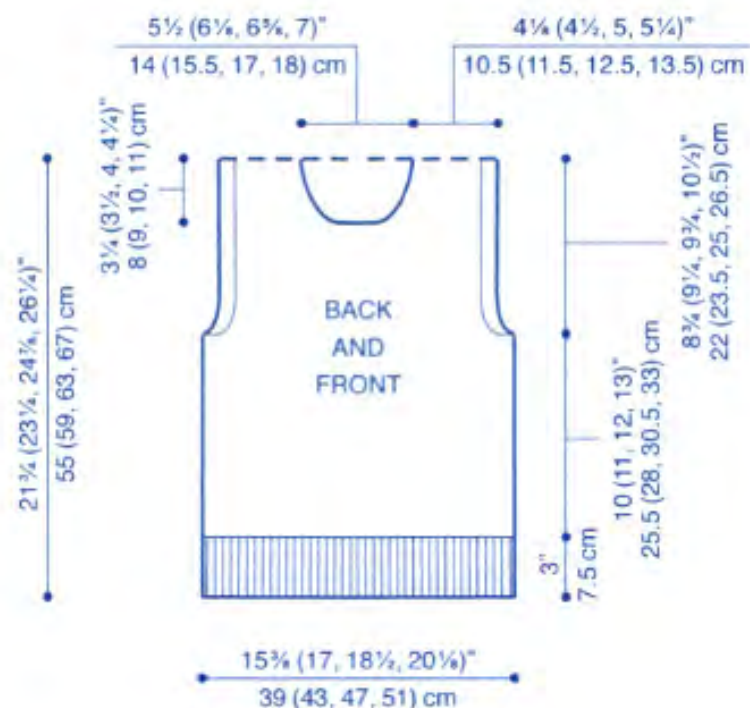
Sew side seams. Weave in ends.

ABBREVIATIONS

cm	centimeter
dec	decrease(d)(s)(ing)
inc	increase(d)(s)(ing)
k	knit
mm	millimeters
p	purl
psso	pass slipped stitch over
rep	repeat(s)(ing)
rnd(s)	round(s)
RS	right side
sl	slip
st(s)	stitch(es)
tog	together
WS	wrong side



Originally published Fall 2011



Olimpia Shrug

designed by Filatura Di Crosa Design Studio



FILATURA DI CROSA

ZARA: 25th Anniversary Collection



Sizes

Small (**Medium**, Large, **XL**, 2X, **3X**)

Knitted Measurements

Back Width 20 $\frac{3}{4}$ (**21 $\frac{3}{4}$** , 22 $\frac{3}{4}$, **23 $\frac{3}{4}$** , 24 $\frac{3}{4}$, **25 $\frac{3}{4}$**)"/
52.5 (**55**, 58, **60.5**, 63, **65.5**) cm

Length 21 $\frac{3}{4}$ (**24**, 25 $\frac{1}{4}$, **27 $\frac{1}{2}$** , 28 $\frac{1}{2}$, **29 $\frac{3}{4}$**)"/
55 (**61**, 64, **70**, 72.5, **75.5**) cm

Materials

- 9 (**11**, 13, **15**, 17, **19**) balls Filatura Di Crosa **ZARA PLUS** 100% extrafine merino wool (1.75oz/50g; 77yds/70m) in **color #404 oatmeal**
 - One pair size 8 (5mm) needles
- OR SIZE TO OBTAIN GAUGE**
- One pair size 6 (4mm) needles
 - Cable needle (cn)
 - Yarn needle

GAUGE

14 sts and 34 rows = 4"/10 cm in Fisherman's Rib with larger needles

TAKE TIME TO CHECK GAUGE

SPECIAL ABBREVIATIONS

Tw2B: Slip 1 st to cn and hold in back, k1, p1 from cn.

Tw2F: Slip 1 st to cn and hold in front, p1, k1 from cn.

K1B: Knit 1 below – insert RH needle through center of st below next st on LH needle and k1, slipping the st above off needle at the same time.

PATTERN STITCHES

Reverse Stockinette stitch (Rev St st) Purl on RS, knit on WS.

K2, p2 rib (multiple of 4 sts)

Row 1 (RS) Sl1 knitwise, * k2, p2; rep from * to last 3 sts, k3.

Row 2 (WS) Sl1 knitwise, * p2, k2; rep from * to last 3 sts, p2, k1.

Repeat Rows 1-2 for k2, p2 rib.

Fisherman's Rib (multiple of 2 sts)

Row 1 Sl1 knitwise, * k1, K1B; rep from * to last st, k1. Repeat Row 1 for Fisherman's Rib.

NOTE: SHRUG is worked side to side in one piece, starting from Right Sleeve.

SHRUG

With smaller needles, cast on 76 (**84**, 88, **96**, 100, **104**) sts.

(RS) Begin k2, p2 rib; work 18 rows. Change to larger needles.

Next Row (RS) Sl1 knitwise, * Tw2F, p1, k1; rep from * to last 3 sts, Tw2F, k1.

(WS) Change to Fisherman's Rib; work even until piece measures 32 (**35½**, 39, **42½**, 46, **49½**)" from beg, end with a WS row.

Change to smaller needles.

Next Row (RS) Sl1 knitwise, * Tw2B, p1, k1; rep from * to last 3 sts, Tw2B, k1.

(WS) Change to k2, p2 rib (starting with p2, k2); work 17 rows.

Bind off all sts in rib.

FINISHING

Block piece to measurements. Sew Sleeve seams from cuff to 7 (**8¼**, 9½, **10¾**, 12, **13¼**)" from beg.

Back Edging

With WS facing and smaller needles, pick up and knit 93 (**98**, 103, **108**, 113, **118**) sts along bottom edge of SHRUG.

(RS) Begin Rev St st; work 5 rows.



Fold Edging in half to RS (with Rev St st side inside) and sew each st down along picked-up row of Edging, using back stitch.

Front and Neck Edging

Work as for Back Edging along top edge of SHRUG.

Sew Edging ends tog. Weave in ends.

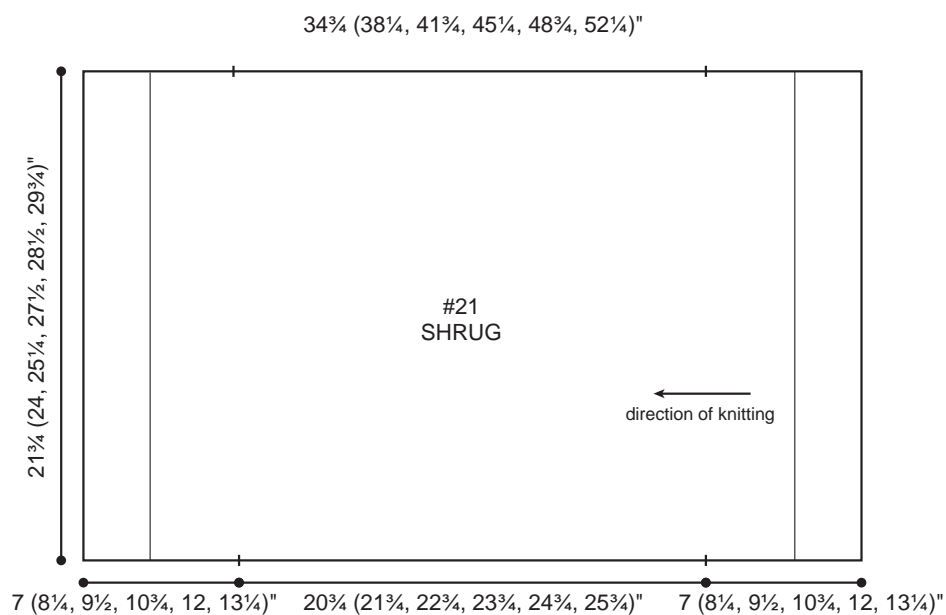
ABBREVIATIONS & SCHEMATICS ON NEXT PAGE



Originally published Fall 2014

ABBREVIATIONS

beg	begin(ning)
k	knit
LH	left-hand
p	purl
rem	remain(ed)(s)(ing)
rep	repeat(ed)(s)(ing)
RH	right-hand
RS	right side
sl	slip
st(s)	stitch(es)
tog	together
WS	wrong side



Scoop-Neck Eyelet-Cable Pullover & Scarf

designed by Filatura Di Crosa
Design Studio



FILATURA DI CROSA

ZARA: 25th Anniversary Collection



Sizes

Small (**Medium**, Large, **XL**)

Knitted Measurements

PULLOVER

Bust 33 $\frac{7}{8}$ (**37**, 40 $\frac{1}{8}$, **43 $\frac{1}{4}$**)/ 86 (**94**, 102, **110**) cm

Length 24 (**25 $\frac{5}{8}$** , 26 $\frac{3}{4}$, **28 $\frac{3}{8}$**)/ 61.5 (**65**, 68.5, **72**) cm

SCARF

Width 5 $\frac{7}{8}$ (**6 $\frac{5}{8}$** , 7 $\frac{3}{8}$, **8 $\frac{1}{4}$**)/ 15 (**17**, 19, **21**) cm

Length 65 (**66**, 67 $\frac{3}{8}$, **68 $\frac{7}{8}$**)/ 165 (**168**, 171, **175**) cm

Materials

- 10 (**13**, 16, **19**) balls Filatura Di Crosa **ZARA** 100% superfine superwash merino wool (1.75oz/50g; 136.5yds/125m) in **color #1798 turquoise** or substitute **color #1956 aqua** for **PULLOVER**
 - 5 (**6**, 7, **8**) balls Filatura Di Crosa **ZARA** in **color #1798 turquoise** or substitute **color #1956 aqua** for **SCARF**
 - One pair size 4 (3.5mm) needles
 - One pair size 6 (4mm) needles
 - One size 4 (3.5mm) circular needle
- OR SIZE TO OBTAIN GAUGE**
- Stitch markers
 - Yarn needle

GAUGES

23 sts and 30 rows = 4"/10 cm over St st with larger needles for PULLOVER

36 sts and 30 rows = 4"/10 cm in k2, p2 rib with larger needles for SCARF

TAKE TIME TO CHECK GAUGES

SPECIAL ABBREVIATIONS

K2tog Knit 2 together (dec) – Knit 2 sts tog through the front loops.

M1K M1 knitwise (inc) – Lift strand between needles to left-hand needle and knit it through back loop, twisting it.

SKP (Left-leaning dec) – Slip 1, k1, psso.

PATTERN STITCHES

K2, P2 rib (multiple of 4 sts + 2)

Stockinette stitch (St st) Knit on RS, purl on WS.

Fancy Pattern (multiple of 8 + 2)

Row 1 * p2, k6 *, rep from * to *, p2.

Row 2 and all even rows Work sts as they face you, p yo.

Row 3 * p2, yo, k2, SKP, k2 *, rep from * to *, p2.

Row 5 * p2, k1, yo, k2, SKP, k1 *, rep from * to *, p2.

Row 7 * p2, k2, yo, k2, SKP *, rep from * to *, p2.

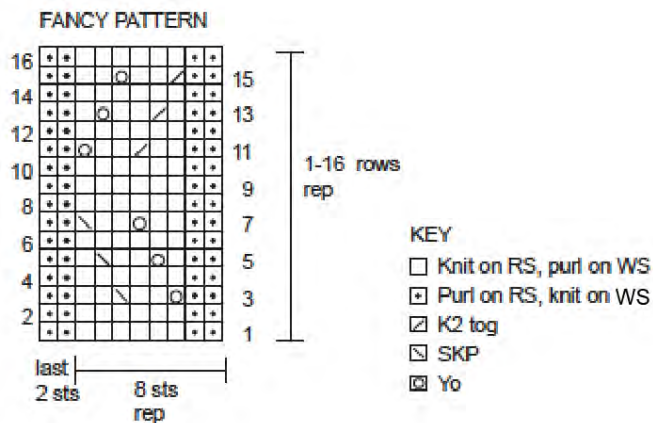
Row 9 * p2, k6 *, rep from * to *, p2.

Row 11 * p2, k2, k2 tog, k2, yo *, rep from * to *, p2.

Row 13 * p2, k1, k2 tog, k2, yo, k1 *, rep from * to *, p2.

Row 15 * p2, k2 tog, k2, yo, k2 *, rep from * to *, p2.

Repeat Rows 1 – 16 for Fancy Pattern.



NOTE: Fancy Pattern for Scarf is an 8-st repeat only; the 2 extra stitches are not worked.

BACK

With smaller needles cast on 100 (**108**, 116, **126**) sts.

(RS) Begin k2, p2 rib starting with p2.



Work even until piece measures 2¾" from beg, end with a WS row.

(RS) Cont with larger needles in St st.

Work even until piece measures 5½ (**5½**, 5¾, **6¼**)" from beg, end with a WS row.

Shape Sides

Decrease Row (RS) K3, SKP, work to last 6 sts, end with k2tog, k3.

Work 17 rows.

Rep last 18 rows twice more – 94 (**102**, 110, **120**) sts rem.

Work even until piece measures 13 (**13¾**, 14½, **15¾**)" from beg, end with a WS row.

Increase Row (RS) K3, M1K, work to last 4 sts, end with M1K, k3.

Work 19 rows.

Rep last 20 rows once more – 98 (**106**, 114, **124**) sts.

Work even until piece measures 17 ⅜ (**18⅞**, 19, **19⅝**)" from beg, end with a WS row.

Shape Armholes

(RS) Bind off 5 sts at beg of next 2 rows – 88 (**96**, 104, **114**) sts rem.

Decrease Row (RS) K3, SKP, work to last 5 sts, end with k2tog, k3.

Work 1 row.

Rep last 2 rows 8 (**9**, 10, **11**) more times – 70 (**76**, 82, **90**) sts rem.

Work even until armholes measure 6⅞ (**7⅞**, 7⅞, **8⅝**)" from beg. Bind off rem sts.

FRONT

With smaller needles cast on 100 (**108**, 116, **126**) sts.
(RS) Begin k2, p2 rib starting with p2.
Work even until piece measures 2¾" from beg, end with a WS row.

(RS) Cont with larger needles and work 9 (**13**, 5, **6**) sts in St st, 82 (**82**, 106, **114**) sts in Fancy Pattern, 9 (**13**, 5, **6**) sts in St st.

Work even until piece measures 5⅞ (**5½**, 5⅞, **6¼**)" from beg, end with a WS row. Place a marker each side of center 14 (**16**, 18, **20**) sts.

Shape Sides

Work as for BACK.

Work even until piece measures 13¾ (**14½**, 15⅜, **16⅞**)" from beg, end with a WS row.

Shape Neck

(RS) Work across to marker, join a second ball of yarn and bind off center 14 (**16**, 18, **20**) sts, work to the end. End each part separately.

Right Front (WS) Work 1 row on WS.

(RS) Bind off 1 st and work foll sts as established.

Work 1 row.

Rep last 2 rows 4 more times.

AT THE SAME TIME, when piece measures 17⅞ (**18⅞**, 19, **19⅝**)" from beg, start Armhole shaping, end with a RS row.

Shape Armhole

(WS) Bind off 5 sts at beg of foll 2 rows – 88 (**96**, 104, **114**) sts rem.

(WS) Bind off 5 sts at beg of foll row.

Decrease Row (RS) work to last 5 sts, k2tog, k3. Work 1 row.

Rep last 2 rows 8 (**9**, 10, **11**) more times – 23 (**25**, 27, **30**) sts rem.

Work even until Armholes measure 6⅞ (**7⅜**, 7⅞, **8⅝**)" from beg. Bind off rem sts.

Left Front and Left Armhole Shaping

Work as the Right Front, reversing all shaping, then start the sleeve cap after having worked a row on WS and the neckline after having worked 1 row on RS.

For Armhole decs work SKP.

SLEEVES

With smaller needles cast on 48 (**52**, 56, **58**) sts.
(RS) Begin k2, p2 rib starting with k2.
Work even until piece measures 2¾" from beg, end with a WS row.

(RS) Cont with larger needles in St st.
Work even until piece measures 4" from beg, end with a WS row.

Shape Sleeve

Increase Row (RS) K2, M1K, work to last 2 sts,



end with M1K, k2.

Work 7 rows.

Rep last 8 rows 9 (**9**, 10, **11**) more times – 68 (**72**, 78, **84**) sts.

Work even until piece measures 16½ (**17⅜**, 18⅞, **19**)" from beg, end with a WS row.

Sleeve Cap

(RS) Bind off 5 sts at beg of foll 2 rows – 58 (**62**, 68, **74**) sts rem.

Decrease Row (RS) K4, SKP, work to the last 6 sts, end with k2tog, k4.

Work 1 row.

Rep last 2 rows 9 (**10**, 11, **12**) more times – 38 (**40**, 44, **48**) sts rem.

Decrease Row (RS) K4, SKP, work to the last 6 sts, end with k2tog, k4.

Work 3 rows.

Rep last 4 rows twice more – 32 (**34**, 38, **42**) sts rem.

Decrease Row (RS) K4, SKP, work to the last 6 sts, end with k2tog, end with k4.

Work 1 row.

Rep last 2 rows 4 (**5**, 6, **7**) more times – 22 (**22**, 24, **26**) sts rem.

When piece measures 23¼ (**24¾**, 26, **27½**)" from beg, bind off rem sts.

FINISHING

Block pieces to measurements. Sew Shoulder seams.

Collar

With circular needle, pick up and knit up 160 (**168**, 176, **184**) sts along the Neckline.

(RS) Begin k2, p2 rib.

Work even until piece measures 1¼" from beg.

Bind off all sts.

Join side seams. Sew and mount sleeves.

SCARF

With larger needles cast on 52 (**60**, 68, **76**) sts.

(RS) Begin k2, p2 rib.

Work even until piece measures ¾" from beg, end with a WS row.

(RS) Work 1 St st, 16 sts in Fancy Pattern, 34 (**42**, 50, **58**) sts in k2, p2 rib starting with k2, 1 St st.

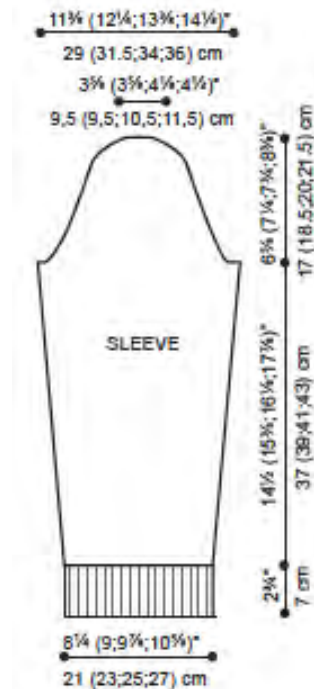
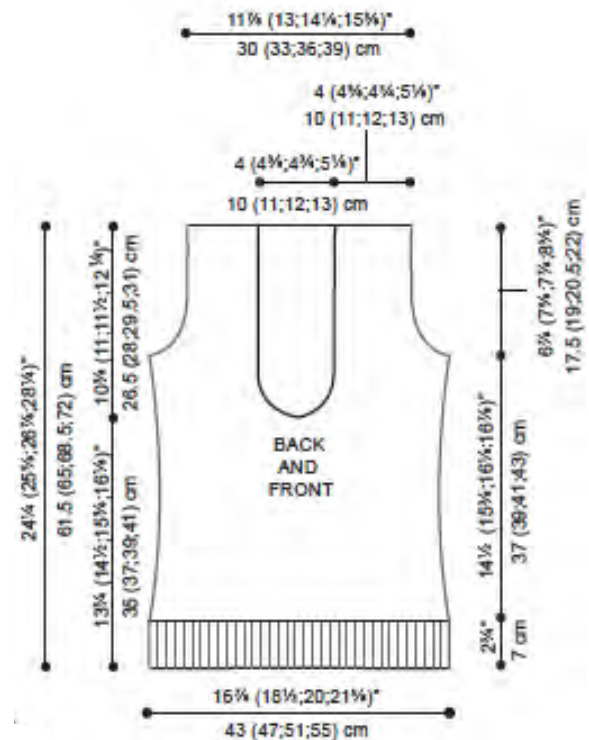
Work even until piece measures 64½ (**65¾**, 67, **68½**)" from beg, end with a WS row.

Cont in k2, p2 rib over all sts.

Work even until piece measures 65 (**66**, 67¾, **68¾**)" from beg. Bind off all sts.

ABBREVIATIONS

beg	begin(ning)
cm	centimeter
cont	continue(d)(s)(ing)
dec	decrease(d)(s)(ing)
foll	follow(ed)(s)(ing)
inc	increase(d)(s)(ing)
k	knit
mm	millimeters
p	purl
psso	pass slipped stitch over
rem	remain(ing)
rep	repeat(s)(ing)
RS	right side
st(s)	stitch(es)
tbl	through back loop
tog	together
WS	wrong side
yo	yarn over



Originally published Fall 2010

Trastevere Poncho Top

designed by Filatura Di Crosa Design Studio



FILATURA DI CROSA

ZARA: 25th Anniversary Collection



Sizes

Small (**Medium**, Large, **XL**, 2X, **3X**)

Knitted Measurements

Width 35¼ (**36¾**, 38½, **40**, 41½, **43¼**)”/
89.5 (**93.5**, 98, **101.5**, 105.5, **110**) cm

Length 38½ (**41¾**, 45, **48**, 51, **54¼**)”/
98 (**106**, 114.5, **122**, 129.5, **138**) cm

Materials

- 11 (**13**, 15, **17**, 19, **21**) balls Filatura Di Crosa **ZARA** 100% extrafine merino wool (1.75oz/50g; 137yds/125m) in **color #1655 deep taupe heather**
 - One pair size 6 (4mm) needles
- OR SIZE TO OBTAIN GAUGE**
- Stitch markers
 - Yarn needle

GAUGE

20 sts and 28 rows = 4"/10 cm in Stockinette stitch

TAKE TIME TO CHECK GAUGE

SPECIAL ABBREVIATION

K1-b: Knit 1 below – insert RH needle through center of st below next st on LH needle and k1, slipping the st above off needle at the same time.

PATTERN STITCHES

Stockinette stitch (St st) Knit on RS, purl on WS.

Honeycomb Pattern (multiple of 2 sts + 2)

Row 1 (RS) K1, * k1, k1-b; rep from * to last st, k1.

Row 2 Purl.

Row 3 K1, * k1-b, k1; rep from * to last st, k1.

Row 4 Purl.

Repeat Rows 1-4 for Honeycomb Pattern.

PONCHO TOP

Cast on 176 (**184**, 192, **200**, 208, **216**) sts.

(WS) Purl 1 row.

(RS) Beg Honeycomb Patt; work even until piece measures 3½" from beg, end with a WS row.

(RS) Work in Honeycomb Patt over first 15 (**15**, 17, **17**, 19, **19**) sts, k146 (**154**, 158, **166**, 170, **178**), work in Honeycomb Patt over last 15 (**15**, 17, **17**, 19, **19**) sts. Keeping first and last 15 (**15**, 17, **17**, 19, **19**) sts in Honeycomb Patt and center sts in St st, work even until piece measures 13 (**14¼**, 15¼, **16½**, 17½, **18¾**)" from beg, end with a WS row. Pm each side of center 18 (**18**, 22, **22**, 26, **26**) sts.

Shape Neck

(RS) Work to marker, work Row 1 of Honeycomb Patt over next 8 (**8**, 10, **10**, 12, **12**) sts, k1, join second ball of yarn, k1, work Row 1 of Honeycomb Patt over next 8 (**8**, 10, **10**, 12, **12**) sts, work to end.

Working both sides at the same time with separate balls of yarn and keeping 1 st at each Neck edge in St st, work even until piece measures 12½ (**13¼**, 14½, **15**, 16, **16¾**)" from beg of Neck shaping, end with a WS row.

Joining Row (RS) Work across to marker, remove marker, k9 (**9**, 11, **11**, 13, **13**), with same ball of yarn k9 (**9**, 11, **11**, 13, **13**), remove marker, work to end.

Keeping first and last 15 (**15**, 17, **17**, 19, **19**) sts in Honeycomb Patt and center sts in St st as set, work even until piece measures 9½ (**10¾**, 11¾, **13**, 14, **15¼**)" from end of Neck shaping, end with a WS row.



(RS) Change to Honeycomb Patt across all sts; work even for 3½". Bind off all sts. Weave in ends.

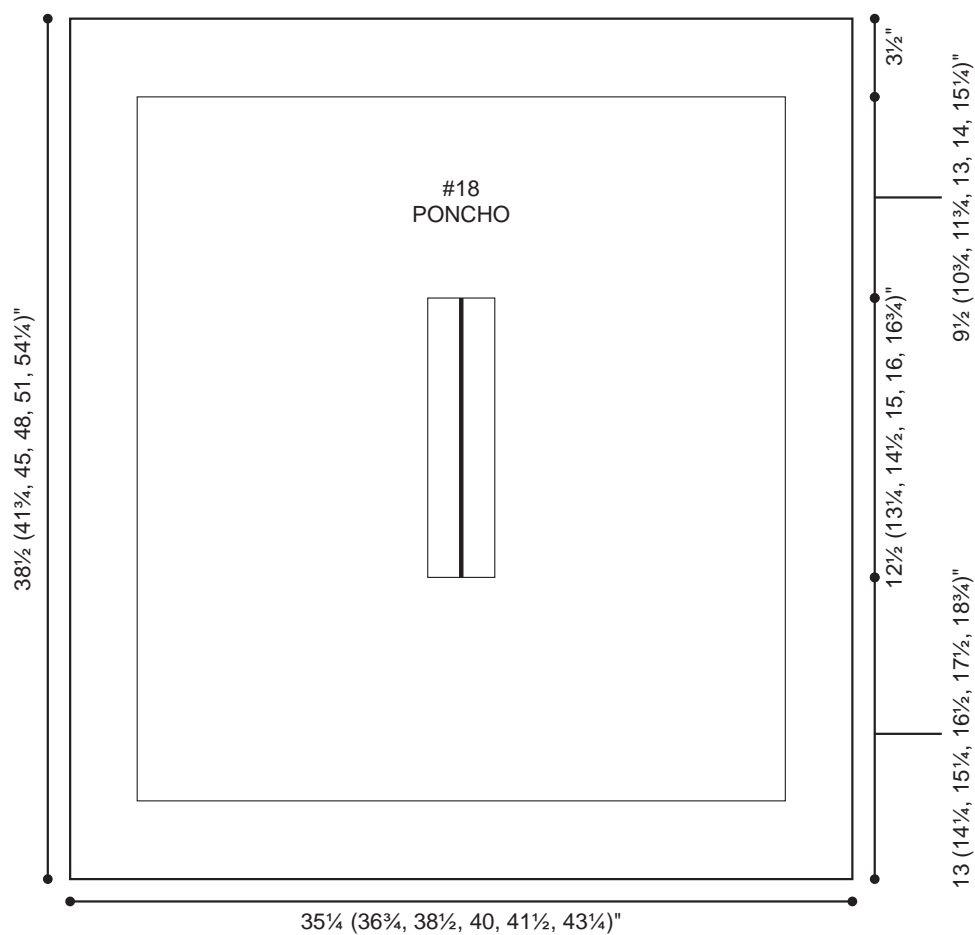
ABBREVIATIONS & SCHEMATIC ON
NEXT PAGE



Originally published Fall 2013

ABBREVIATIONS

beg	begin(ning)
cm	centimeter
dec	decrease(d)(s)(ing)
inc	increase(d)(s)(ing)
k	knit
LH	left-hand
mm	millimeters
p	purl
patt(s)	pattern(s)
rem	remain(ed)(s)(ing)
rep	repeat(ed)(s)(ing)
RH	right-hand
RS	right side
st(s)	stitch(es)
tog	together
WS	wrong side



Shawl-Collar Cardigan

designed by Filatura Di Crosa Design Studio



FILATURA DI CROSA

ZARA: 25th Anniversary Collection



Sizes

Small (**Medium**, Large, **XL**)

Knitted Measurements

Bust 32¼ (**35½**, 38½, **42**)"/
82 (**90**, 98, **107**) cm
Length 18¾ (**20½**, 22, **23⅝**)"/
48 (**52**, 56, **60**) cm

Materials

- 14 (**17**, 20, **23**) balls Filatura Di Crosa **ZARA CHINÉ** 100% extrafine merino wool (1.75oz/50g; 137yds/125m) in **color #1929 loden chiné**
 - One pair size 7 (4.5mm) needles
- OR SIZE TO OBTAIN GAUGE**
- Stitch markers
 - Yam needle
 - 8 (**8**, 9, **9**) buttons, 1"/25cm diameter

GAUGE

19 sts and 28 rows= 4 "/10 cm in Stockinette stitch

TAKE TIME TO CHECK GAUGE

SPECIAL ABBREVIATIONS

Inc1: using single strand of yarn, k1 into 1st strand of st worked with 2 strands of yarn held tog, then k1 into 2nd strand of same st.

M1K M1 knitwise (inc) – Lift strand between needles to left-hand needle and knit it through back loop, twisting it.

PATTERN STITCHES

K2, p2 rib (multiple of 4 sts/4 sts + 2)

Stockinette stitch (St st) Knit on RS, purl on WS.

BACK

With 2 strands of yarn held together, cast on 78 (**86, 94, 102**) sts.

(RS) Begin k2, p2 rib (starting with p2, k2); work 12 rows.

(RS) Change to single strand of yarn and St st. Work even until piece measures 12¼ (**13¼, 14¼, 15¼**)" from beginning, end with a WS row.

Shape Armholes

(RS) Bind off 3 (**3, 4, 4**) sts at beginning of next 2 rows, 1 st at beginning of next 12 (**14, 14, 16**) rows – 60 (**66, 72, 78**) sts remain.

Work even until Armhole measures 6⅝ (**7¼, 7⅞, 8½**)" from beginning, end with a WS row. Bind off all sts.

LEFT FRONT

With 2 strands of yarn held together, cast on 38 (**42, 46, 50**) sts.

(RS) Begin k2, p2 rib (starting with p2, k2); work 12 rows.

(RS) Change to single strand of yarn and St st, Inc1 6 times evenly across 1st row – 44 (**48, 52, 56**) sts.

Work even until piece measures 12¼ (**13¼, 14¼, 15¼**)" from beginning, end with a WS row.

Shape Armhole

(RS) Bind off 3 (**3, 4, 4**) sts at beginning of row, 1 st at beginning of next 6 (**7, 7, 8**) RS rows – 35 (**38, 41, 44**) sts remain.

Work even until Armhole measures 4 (**4½, 4½, 4¾**)" from beginning, end with a RS row.

Shape Neck

(WS) Bind off 10 (**10, 11, 11**) sts at beginning of row, 1 st at beginning of next 3 (**4, 4, 5**) WS rows – 22 (**24, 26, 28**) sts remain.



Work even until Armhole measures 6⅝ (**7¼, 7⅞, 8½**) from beginning, end with a WS row. Bind off all sts.

RIGHT FRONT

Work as for Left Front, reversing all shaping. Work Armhole shaping at beginning of WS rows and Neck shaping at beginning of RS rows.

SLEEVES

With 2 strands of yarn held together, cast on 38 (**42, 46, 50**) sts.

(RS) Begin k2, p2 rib (starting with p2, k2); work 36 rows.

(RS) Change to single strand of yarn and St st. Work even until piece measures 7 (**6⅝, 7⅞, 8¼**)" from beginning, end with a WS row.

Shape Sleeve

Increase Row (RS) K1, M1K, knit to last st, M1K, k1. Work 7 (**7, 5, 5**) rows even.

Repeat last 8 (**8, 6, 6**) rows 7 (**8, 9, 10**) more times – 54 (**60, 66, 72**) sts.

Work even until piece measures 16½ (**17¼, 17¾, 18¼**)" from beginning, end with a WS row.

Shape Cap

(RS) Bind off 3 (**3, 4, 4**) sts at beginning of next 2 rows, 1 st at beginning of next 32 (**36, 40, 44**) rows – 16 (**18, 18, 20**) sts remain.

Work even until piece measures 21¼ (**22⅜, 23⅝, 24⅞**)" from beginning. Bind off all sts.

COLLAR

With 2 strands of yarn held together, cast on 114 (**118**, 126, **130**) sts.

(RS) Begin k2, p2 rib (starting with p2, k2). Work even until piece measures $7\frac{7}{8}$ " from beginning. Bind off all sts.

FINISHING

Block pieces to measurements.

Sew shoulder seams. With RS of COLLAR and WS of work facing, sew bind-off edge of COLLAR to Neck shaping.

Button Band

With RS facing and 2 strands of yarn held tog, pick up and purl 38 sts along Collar Left edge, pick up and knit 82 (**88**, 94, **100**) sts along Left Front.

(WS) Begin k2, p2 rib (starting with k2, p2; p2, k2; k2, p2; p2, k2); work 8 rows. Bind off all sts.

Buttonhole Band

With RS facing and 2 strands of yarn held tog, pick up and knit 82 (**88**, 94, **100**) sts along Right Front, pick up and purl 38 sts along Collar Right edge.

(WS) Begin k2, p2 rib (starting with p2, k2); work 3 rows.

Buttonhole Row - Row 4 (RS) Work 6 (**4**, 4, **6**) sts, *bind off 4 sts, work next 10 (**12**, 10, **12**) sts; rep from * 3 (**3**, 4, **4**) more times, bind off 4 sts, work to end.

Next Row - Row 5 (WS) Work across to bound off sts, * cast on 4 sts, work next 10 (**12**, 10, **12**) sts; rep from * 3 (**3**, 4, **4**) more times, cast on 4 sts, work to end.

Work 3 rows even. Bind off all sts.

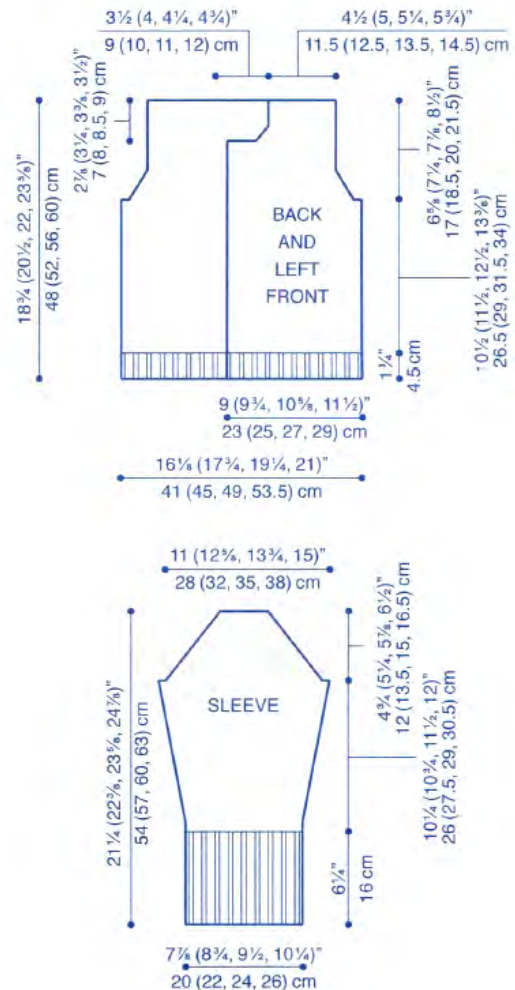
Sew side seams. Sew Sleeve seams and set in Sleeves.

Sew buttons to Button Band opposite Buttonholes.

Sew one button to WS of Buttonhole Band at beginning of Neck shaping, and 2 buttons to WS of Collar Band $2\frac{3}{4}$ " apart from each other. Weave in ends.

ABBREVIATIONS

cm	centimeter
inc	increase(d)(s)(ing)
k	knit
mm	millimeters
p	purl
rep	repeat(s)(ing)
RS	right side
st(s)	stitch(es)
tog	together
WS	wrong side



Originally published Fall 2011

Lattice-Yoke Tunic

designed by Rosemary Drysdale



FILATURA DI CROSA

ZARA: 25th Anniversary Collection



Sizes

Small (**Medium**, Large, **XL**)

Knitted Measurements

Bust 42½ (**49**, 55½, **62**)"/108 (**124.5**, 141, **157.5**) cm

Length 27 (**28¼**, 29½, **30¾**)"/68.5 (**72**, 75, **78**) cm

Materials

• 14 (**16**, 18, **20**) balls Filatura Di Crosa **ZARA** 100% superfine merino wool (1.75oz/50g; 137yds/125m) in color **#1748 cappuccino** or substitute **#1978 chocolate**

- One pair size 9 (5.5mm) needles

OR SIZE TO OBTAIN GAUGE

- One pair size 10.5 (6.5mm) needles
- One size 10.5 (6.5mm) circular needle, 24"/60cm long, for Cowl Neck
- One size 11 (8mm) circular needle, 24"/60cm long, for Cowl Neck
- Cable needle (cn)
- Stitch holders
- Stitch markers
- Yarn needle

GAUGE

17 sts and 22 rows = 4"/10 cm in Stockinette stitch with smaller needles and single strand of yarn

TAKE TIME TO CHECK GAUGE

SPECIAL ABBREVIATIONS

C2F: Slip 1 st to cn and hold in front, k1, k1 from cn.

C2B: Slip 1 st to cn and hold in back, k1, k1 from cn.

C3F: Slip 2 sts to cn and hold in front, k1, k2 from cn.

C3B: Slip 1 st to cn and hold in back, k2, k1 from cn.

C4F: Slip 2 sts to cn and hold in front, k2, k2 from cn.

C4B: Slip 2 sts to cn and hold in back, k2, k2 from cn.

Tw2F: Slip 1 st to cn and hold in front, p1, k1 from cn.

Tw2B: Slip 1 st to cn and hold in back, k1, p1 from cn.

Tw3F: Slip 2 sts to cn and hold in front, p1, k2 from cn.

Tw3B: Slip 1 st to cn and hold in back, k2, p1 from cn.

PATTERN STITCHES

Stockinette stitch (St st) Knit on RS, purl on WS.

K2, p2 rib for working flat (multiple of 4 sts + 2)

Row 1 K2, * p2, k2; rep from * across.

Row 2 P2, * k2, p2; rep from * across.

Repeat Rows 1-2 for k2, p2 rib.

K2, p2 rib for working in the rnd (multiple of 4 sts)

Rnd 1 * K2, p2; rep from * around.

Repeat Rnd 1 for k2, p2 rib.

Moss stitch (multiple of 2 sts + 2)

Row 1 (RS) K1, * k1, p1; rep from * to last st, k1.

Rows 2, 4 Knit the knit sts and purl the purl sts as they face you.

Row 3 K1, * p1, k1; rep from * to last st, k1.

Repeat Rows 1-4 for Moss stitch.

Plaid Lattice pattern (multiple of 14 sts + 2)

Row 1 (WS) K1, * p1, k4, p4, k4, p1; rep from * to last st, k1.

Row 2 P1, k1, * p4, C4F, p4, C2F; rep from * to last 14 sts, p4, C4F, p4, k1, p1.

Row 3 and all odd number rows Knit the knit sts and purl the purl sts.

Row 4 P1, * Tw2F, p2, Tw3B, Tw3F, p2, Tw2B; rep from * to last st, p1.



Row 6 P1, * p1, Tw2F, Tw3B, p2, Tw3F, Tw2B, p1; rep from * to last st, p1.

Row 8 P1, * p2, C3B, p4, C3F, p2; rep from * to last st, p1.

Row 10 P1, * p1, Tw3B, Tw2F, p2, Tw2B, Tw3F, p1; rep from * to last st, p1.

Row 12 P1, * Tw3B, p2, Tw2F, Tw2B, p2, Tw3F; rep from * to last st, p1.

Row 14 P1, k2, * p4, C2B, p4, C4B; rep from * to last 13 sts, p4, C2B, p4, k2, p1.

Row 16 P1, * Tw3F, p2, Tw2B, Tw2F, p2, Tw3B; rep from * to last st, p1.

Row 18 P1, * p1, Tw3F, Tw2B, p2, Tw2F, Tw3B, p1; rep from * to last st, p1.

Row 20 P1, * p2, C3F, p4, C3B, p2; rep from * to last st, p1.

Row 22 P1, * p1, Tw2B, Tw3F, p2, Tw3B, Tw2F, p1; rep from * to last st, p1.

Row 24 P1, * Tw2B, p2, Tw3F, Tw3B, p2, Tw2F; rep from * to last st, p1.

Repeat Rows 1-24 for Plaid Lattice pattern.
(Chart on next page)

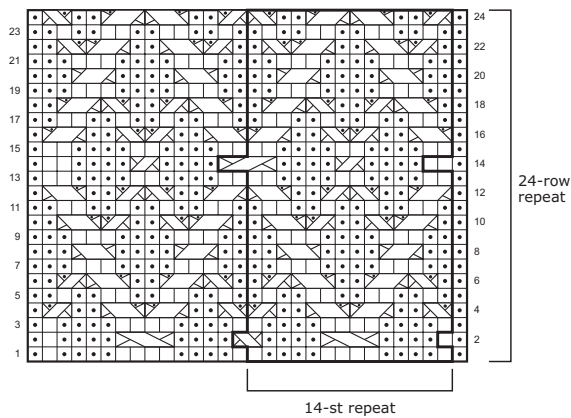
BACK AND FRONT (both alike)

With smaller needles and one strand of yarn, cast on 90 (**106, 118, 134**) sts.

(RS) Begin k2, p2 rib; work even until piece measures 4" from beginning, end with a WS row and dec 0 (**2, 0, 2**) sts in last row – 90 (**104, 118, 132**) sts.

(RS) Change to St st; work even until piece measures 20 (**20½, 21, 21½**)" from beginning,

PLAID LATTICE PATTERN #1



KEY

- ☐ Knit on RS, purl on WS
- ☒ Purl on RS, knit on WS
- ☒ C2F: Slip 1 st to cable needle and hold in front, k1, k1 from cable needle.
- ☒ C2B: Slip 1 st to cable needle and hold in back, k1, k1 from cable needle.
- ☒ C3F: Slip 2 sts to cable needle and hold in front, k1, k2 from cable needle.
- ☒ C3B: Slip 1 st to cable needle and hold in back, k2, k1 from cable needle.
- ☒ C4F: Slip 2 sts to cable needle and hold in front, k2, k2 from cable needle.
- ☒ C4B: Slip 2 sts to cable needle and hold in back, k2, k2 from cable needle.
- ☒ Tw2F: Slip 1 st to cable needle and hold in front, p1, k1 from cable needle.
- ☒ Tw2B: Slip 1 st to cable needle and hold in back, k1, p1 from cable needle.
- ☒ Tw3F: Slip 2 sts to cable needle and hold in front, p1, k2 from cable needle.
- ☒ Tw3B: Slip 1 st to cable needle and hold in back, k2, p1 from cable needle.

end with a WS row. Join second ball of yarn.

(RS) With 2 strands of yarn held tog, larger needles and Moss stitch; work 9 (**13**, **17**, **21**) rows.

Next Row (WS) P2, pm, work Row 1 of Plaid Lattice pattern to last 2 sts, pm, p2.

Keeping 2 sts in St st at beg and end of row and working in pattern st over remaining 86 (**100**, **114**, **128**) sts, work in Plaid Lattice pattern for a total of 24 rows.

Shape Shoulders

(WS) Bind off 20 (**25**, **30**, **35**) sts loosely, purl across 50 (**54**, **58**, **62**) sts and place on holder for Neck, bind off 20 (**25**, **30**, **35**) sts loosely. Sew Shoulder seams.

Cowl Neck

With RS facing, 2 strands of yarn held tog, smaller circular needle and k2, p2 rib, work across 50 (**54**, **58**, **62**) sts from Back Neck holder pick up 4 sts at shoulder seam, work across 50 (**54**, **58**, **62**) sts from Front Neck holder and pick up 4 sts at shoulder seam - 108 (**116**, **124**, **132**) sts. Working in the round, work in k2, p2 rib for 4". Change to larger circular

needle and continue in k2, p2 rib for 5" more. Bind off loosely in rib.

Sleeves

With RS facing, one strand of yarn, and smaller straight needles, pick up and knit 70 (**78**, **86**, **94**) sts along edge of Moss Stitch/Plaid Lattice pattern section.

(WS) Begin k2, p2 rib; work even until piece measures 4" from beginning. Bind off loosely in rib.

FINISHING

Block piece to measurements. (**NOTE:** Do not flatten Plaid Lattice pattern during blocking.) Sew side and Sleeve seams. Weave in ends.

ABBREVIATIONS & SCHEMATICS ON NEXT PAGE

ABBREVIATIONS

beg begin(ning)



Originally published Fall 2008

cm	centimeter
dec	decrease(d)(s)(ing)
k	knit
mm	millimeter
p	purl
pm(Pm)	place marker
rep	repeat(ed)(s)(ing)
rnd(s)	round(s)
RS	right side
st(s)	stitch(es)
WS	wrong side

