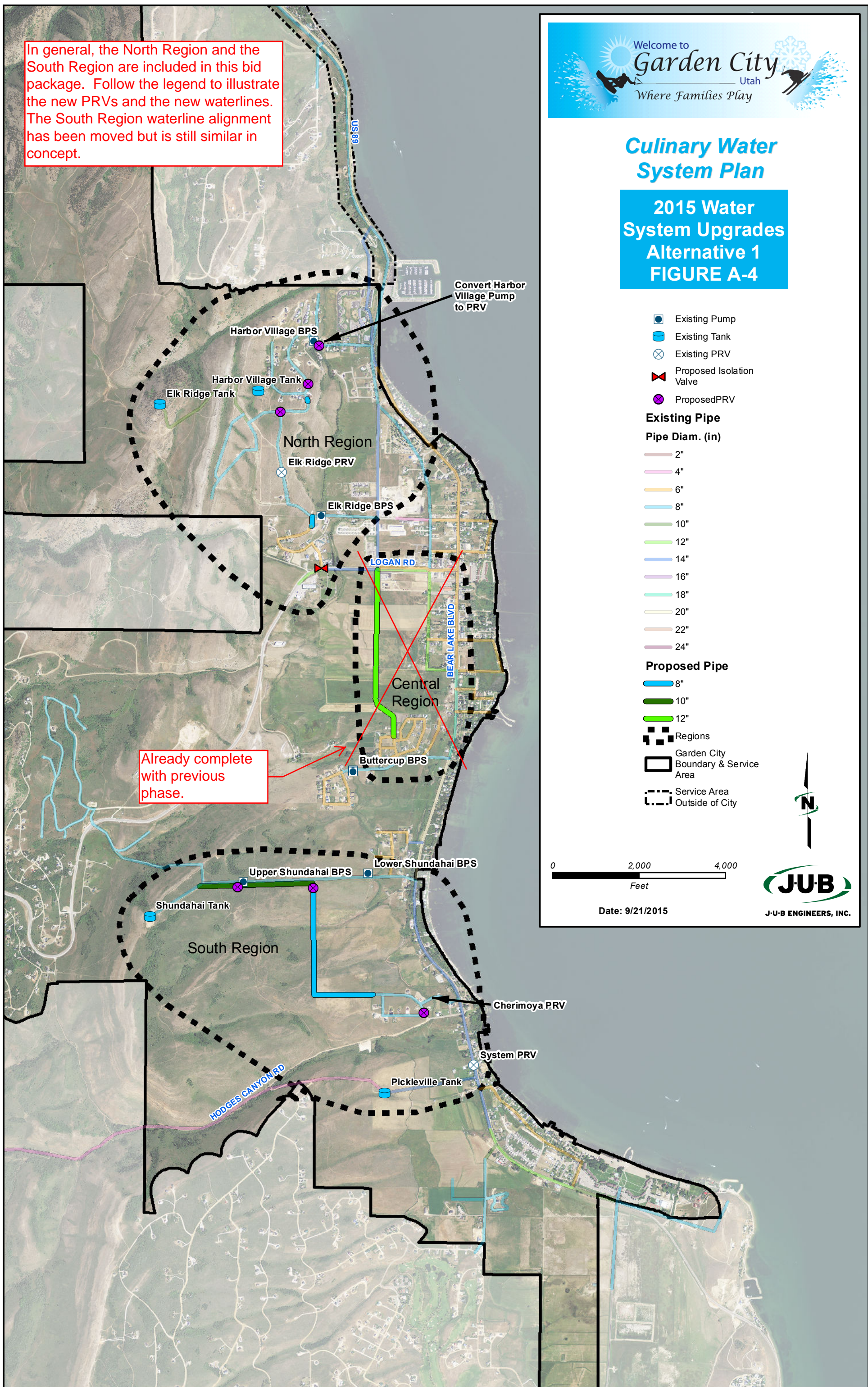


Culinary Water System Plan

2015 Water System Upgrades Alternative 1 FIGURE A-4

In general, the North Region and the South Region are included in this bid package. Follow the legend to illustrate the new PRVs and the new waterlines. The South Region waterline alignment has been moved but is still similar in concept.



Already complete with previous phase.

Convert Harbor Village Pump to PRV

- Existing Pump
- Existing Tank
- Existing PRV
- Proposed Isolation Valve
- Proposed PRV

Existing Pipe

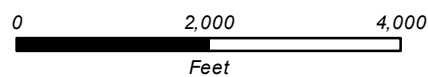
Pipe Diam. (in)

- 2"
- 4"
- 6"
- 8"
- 10"
- 12"
- 14"
- 16"
- 18"
- 20"
- 22"
- 24"

Proposed Pipe

- 8"
- 10"
- 12"

- Regions
- Garden City Boundary & Service Area
- Service Area Outside of City



Date: 9/21/2015



J-U-B ENGINEERS, INC.