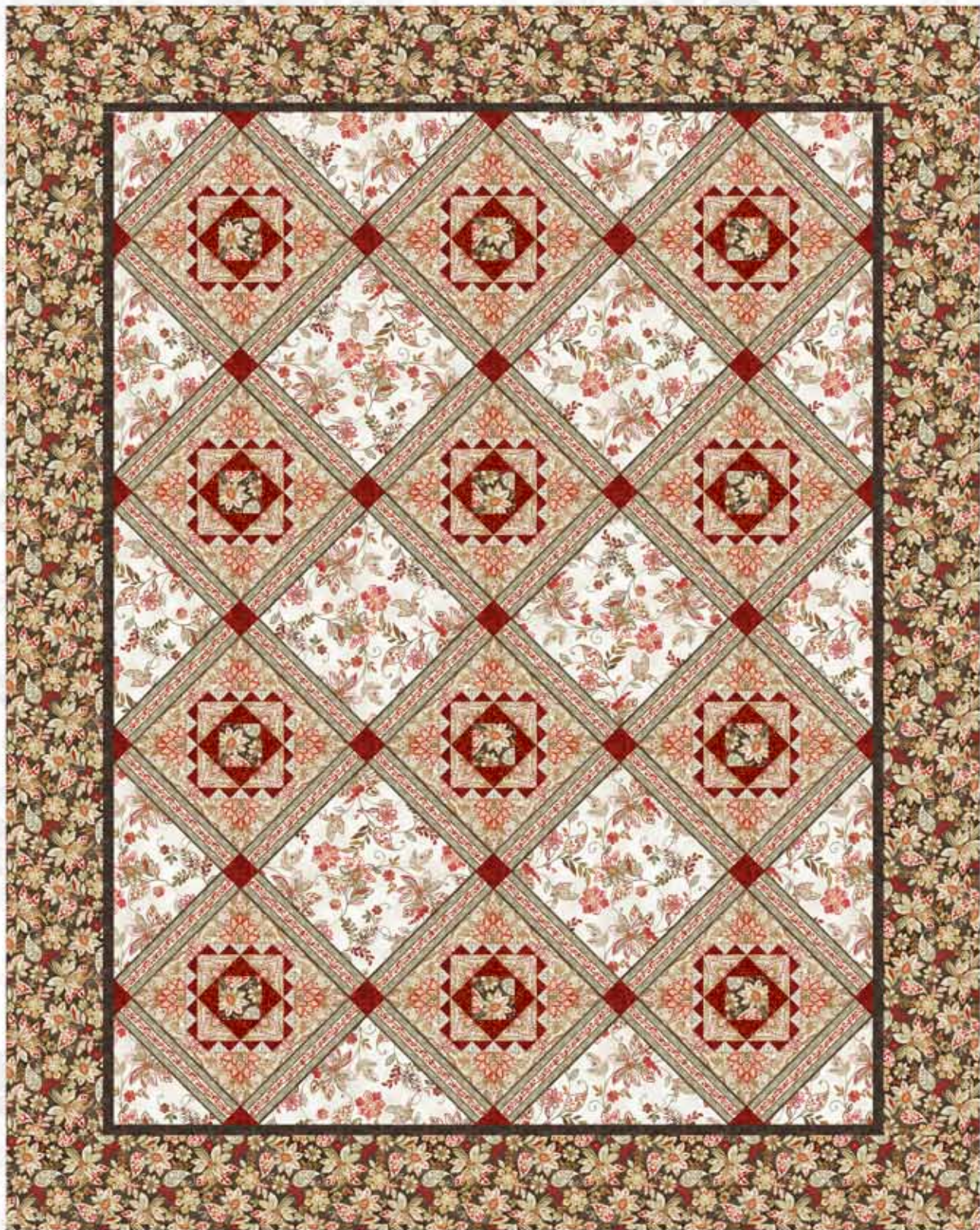




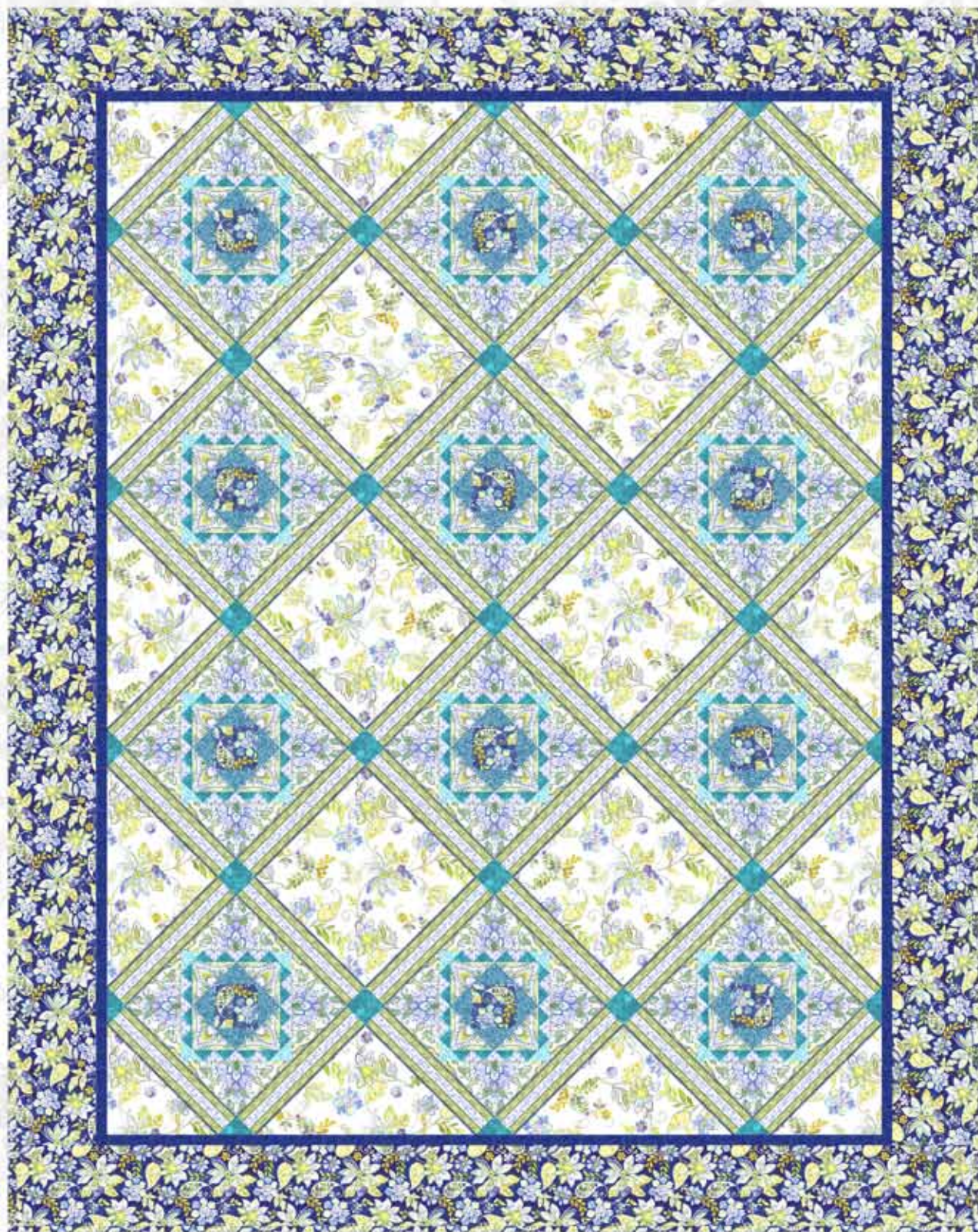
Brianna by Gray Sky Studio



In The Beginning *fabrics*



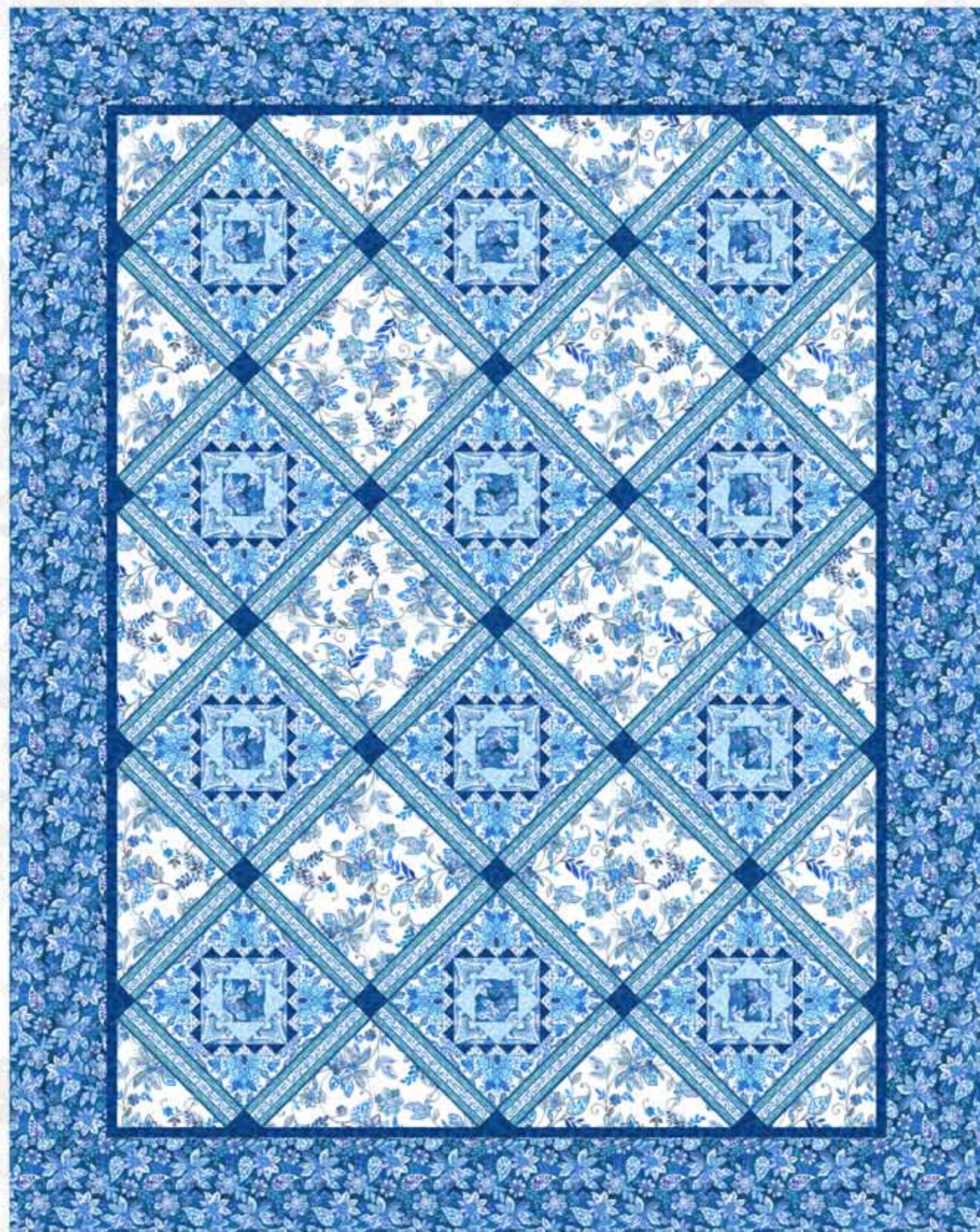
Brianna by Gray Sky Studio



In The Beginning *fabrics*



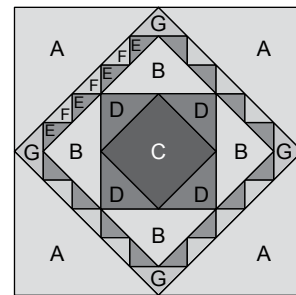
Brianna by Gray Sky Studio



In The Beginning *fabrics*

FINISHED BLOCK SIZE: 14½" x 14½" • FINISHED QUILT SIZE: 91" x 115"

- Quilt instructions are given for quilts in three different colorways.
- A separate materials list is given for each of the three quilts.
- Yardages are based on 40" fabric width.



Materials: Russet Quilt

- 3½ yds. Red/Tan Large Medallion (1GSB1) for blocks
 4½ yds. Brown/Red Large Floral (2GSB1) for blocks, outer border, and binding
 3¼ yds. Taupe/Red Vine Floral (3GSB1) for setting pieces
 2¾ yds. Brown/Red Lattice Stripe (4GSB1) for sashing rectangles
 ½ yd. Red Small Tonal Vine (5GSB1) for blocks
 ⅓ yd. Red/Taupe Sprigs (6GSB1) for blocks
 ½ yd. Taupe Zig Zag Stripe (7GSB1) for blocks
 ⅞ yd. Red Medium Tonal Vine (8GSB1) for blocks and sashing pieces
 ⅝ yd. Brown Medium Tonal Vine (8GSB4) for inner border
 10⅞ yds. for backing (vertical seams)

Materials: Teal Quilt

- 3½ yds. Blue/Green Large Medallion (1GSB2) for blocks
 4½ yds. Blue/Green Large Floral (2GSB2) for blocks, outer border, and binding
 3¼ yds. Cream/Blue-Green Vine Floral (3GSB2) for setting pieces
 2¾ yds. Blue/Green Lattice Stripe (4GSB2) for sashing rectangles
 ½ yd. Teal Small Tonal Vine (5GSB2) for blocks
 ⅓ yd. Teal/Cream Sprigs (6GSB2) for blocks
 ½ yd. Blue/Violet Zig Zag Stripe (7GSB2) for blocks
 ⅞ yd. Teal Medium Tonal Vine (8GSB5) for blocks and sashing pieces
 ⅝ yd. Blue/Violet Medium Tonal Vine (8GSB2) for inner border
 10⅞ yds. for backing (vertical seams)

Materials: Blue Quilt

- 3½ yds. Blue/White Large Medallion (1GSB3) for blocks
 4½ yds. Blue Large Floral (2GSB3) for blocks, outer border, and binding
 3¼ yds. White/Blue Vine Floral (3GSB3) for setting pieces
 2¾ yds. Blue/White Lattice Stripe (4GSB3) for sashing rectangles
 ½ yd. Sky Blue Small Tonal Vine (5GSB3) for blocks
 ⅓ yd. Royal/White Sprigs (6GSB3) for blocks
 ½ yd. Royal Zig Zag Stripe (7GSB3) for blocks
 1¼ yds. Royal Medium Tonal Vine (8GSB3) for blocks, sashing pieces, and inner border
 10⅞ yds. for backing (vertical seams)

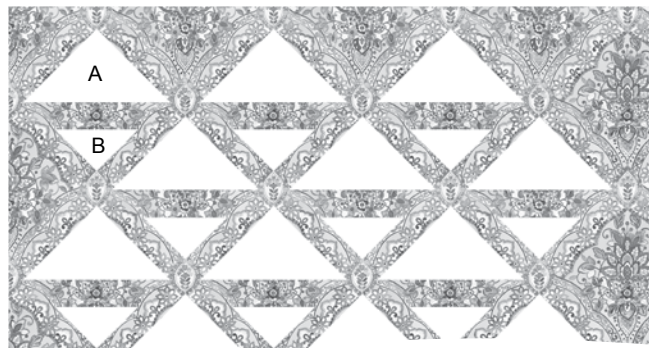
Cutting

One set of cutting instructions is given, and includes information for all three variations of the quilt. Fabrics are cut in order given in Materials lists. Cut strips across width of fabric, unless otherwise instructed.

Tip: After cutting fabric for A-G shapes, put your cut pieces in labeled envelopes or baggies. (Labeling information could include quilt name, size/shape of piece, and identifying letter.) When you are ready to sew, your pieces will be easy to find and use.

From Large Medallion, selectively cut:

- 48 triangles, using Template A, as shown below
- 48 triangles, using Template B, as shown below



Selectively cut A and B triangles by positioning templates as shown.

From *Large Floral*, cut in order given:

- 4 lengthwise strips, $9\frac{1}{2}" \times 102"$, for outer border
- 2 strips, $4\frac{1}{2}" \times 40"$; crosscut 12 squares, $4\frac{1}{2}" \times 4\frac{1}{2}"$, for C squares
- 11 strips, $2\frac{1}{2}" \times 40"$, for double-fold binding

From *Vine Floral*, cut:

- 3 squares, $21\frac{1}{4}" \times 21\frac{1}{4}"$; cut each square twice diagonally to make 12 side-setting triangles (2 extra)
- 6 squares, $14\frac{5}{8}" \times 14\frac{5}{8}"$, for setting squares
- 2 squares, $10\frac{7}{8}" \times 10\frac{7}{8}"$; cut each square once diagonally to make 4 corner-setting triangles

From *Lattice Stripe*, selectively cut:

- 11 strips, 3" x length of fabric, being sure to get correct portion of design for sashing rectangles as shown in photograph; crosscut 48 lengthwise rectangles, 3" x $14\frac{5}{8}"$, for sashing rectangles

From *Small Tonal Vine*, cut:

- 2 strips, $5\frac{1}{4}" \times 40"$; crosscut 12 squares, $5\frac{1}{4}" \times 5\frac{1}{4}"$; cut each square twice diagonally to make 48 of triangle D

From *Sprigs*, cut:

- 2 strips, $2\frac{7}{8}" \times 40"$; crosscut 24 squares, $2\frac{7}{8}" \times 2\frac{7}{8}"$; cut each square once diagonally to make 48 of triangle G

From *Zig Zag Stripe*, cut:

- 3 strips, $3\frac{1}{4}" \times 40"$; crosscut 36 squares, $3\frac{1}{4}" \times 3\frac{1}{4}"$; cut each square twice diagonally to make 144 of triangle F

[For *Russet and Teal Quilts*] From *Red Medium Tonal Vine (Russet Quilt)* –OR– *Teal Medium Tonal Vine (Teal Quilt)*, cut:

- 1 strip, $3\frac{3}{8}" \times 40"$; crosscut 7 squares, $3\frac{3}{8}" \times 3\frac{3}{8}"$; cut each square once diagonally to make 14 sashing triangles
- 4 strips, $3\frac{1}{4}" \times 40"$; crosscut 48 squares, $3\frac{1}{4}" \times 3\frac{1}{4}"$; cut each square twice diagonally to make 192 of triangle E
- 2 strips, 3" x 40"; crosscut 17 squares, 3" x 3", for sashing squares

[For *Russet and Teal Quilts*] From *Brown Medium Tonal Vine (Russet Quilt)* –OR– *Blue/Violet Medium Tonal Vine (Teal Quilt)*, cut:

- 9 strips, $1\frac{1}{2}" \times 40"$, for inner border

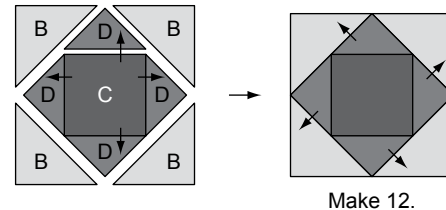
[For *Blue Quilt*] From *Royal Medium Tonal Vine*, cut:

- 1 strip, $3\frac{3}{8}" \times 40"$; crosscut 7 squares, $3\frac{3}{8}" \times 3\frac{3}{8}"$; cut each square once diagonally to make 14 sashing triangles
- 4 strips, $3\frac{1}{4}" \times 40"$; crosscut 48 squares, $3\frac{1}{4}" \times 3\frac{1}{4}"$; cut each square twice diagonally to make 192 of triangle E
- 2 strips, 3" x 40"; crosscut 17 squares, 3" x 3", for sashing squares
- 9 strips, $1\frac{1}{2}" \times 40"$, for inner border

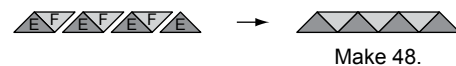
Block Assembly

All seams $\frac{1}{4}"$. Press seams in direction of arrows unless otherwise instructed. Assembly directions are the same for all three quilts. Refer to photographs for fabric placement.

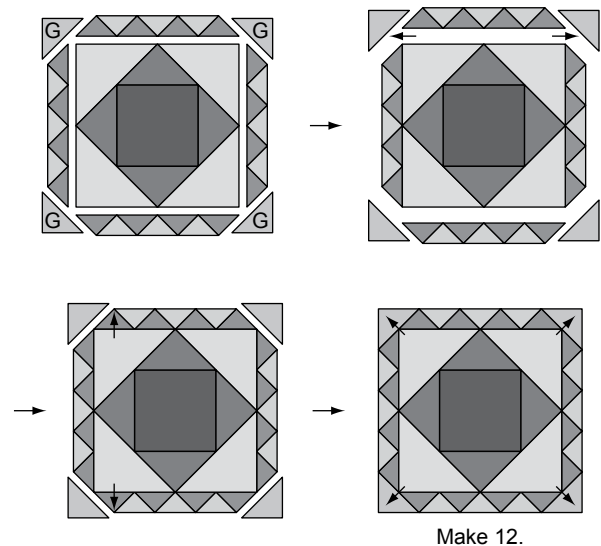
- Using 1 Large Floral $4\frac{1}{2}"$ C square, 4 Small Tonal Vine D triangles, and 4 Large Medallion B triangles, assemble a pieced unit as shown. Repeat to make a total of 12 units.



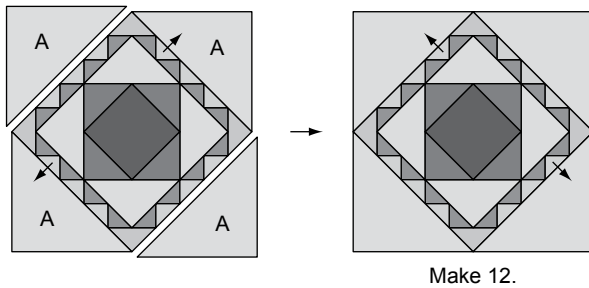
- Using 4 Medium Tonal Vine E triangles, and 3 Zig Zag Stripe F triangles, assemble a triangle unit as shown. (**Note:** Make sure that the zig zag stripe is going in the same direction in each of the 3 F triangles. Notice that in the finished blocks, the stripe runs vertically the *short* length of the triangles at the top and bottom of the block, and the strips run vertically the *long* length of the triangles at the sides of the block.) Press seams open. Repeat to make a total of 48 units.



- Using 1 pieced unit from Step 1, 4 triangle units from Step 2, and 4 Sprigs G triangles, assemble a center-block unit as shown. (**Note:** Make sure that your triangle units are placed so that all of the zig zag stripes in the center-block unit are running in the same direction.) Repeat to make a total of 12 units.

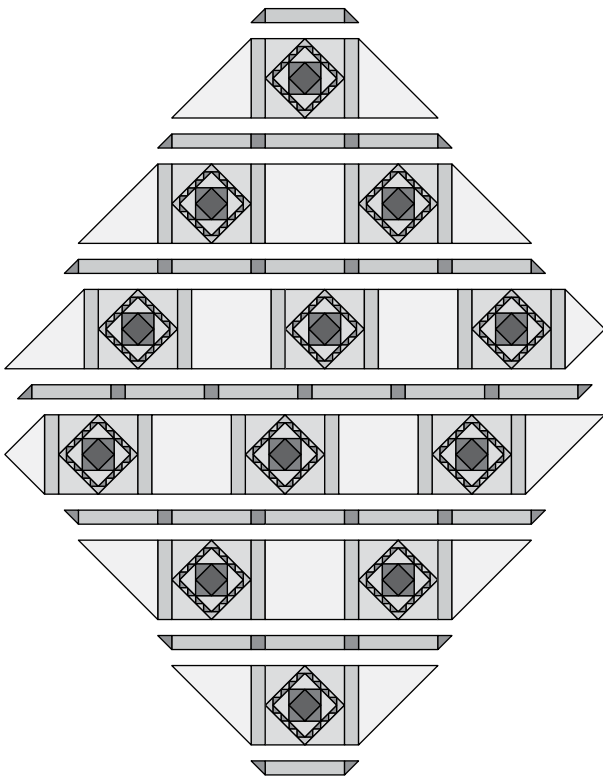


- Using 1 center-block unit and 4 Large Medallion A triangles, assemble a block as shown. Repeat to make a total of 12 blocks.



Quilt Top Assembly

- Using 12 blocks, 48 Lattice Stripe 3" x 14 $\frac{5}{8}$ " sashing rectangles, 17 Medium Tonal Vine 3" sashing squares, 14 Medium Tonal Vine sashing triangles, 6 Vine Floral 14 $\frac{5}{8}$ " setting squares, 10 Vine Floral side-setting triangles, and 2 Vine Floral corner-setting triangles, assemble rows as shown. Press seams toward sashing rectangles.



- Sew rows and 2 remaining Vine Floral corner-setting triangles together as shown in the Quilt Assembly Diagram at right. Press seams toward sashing rows.

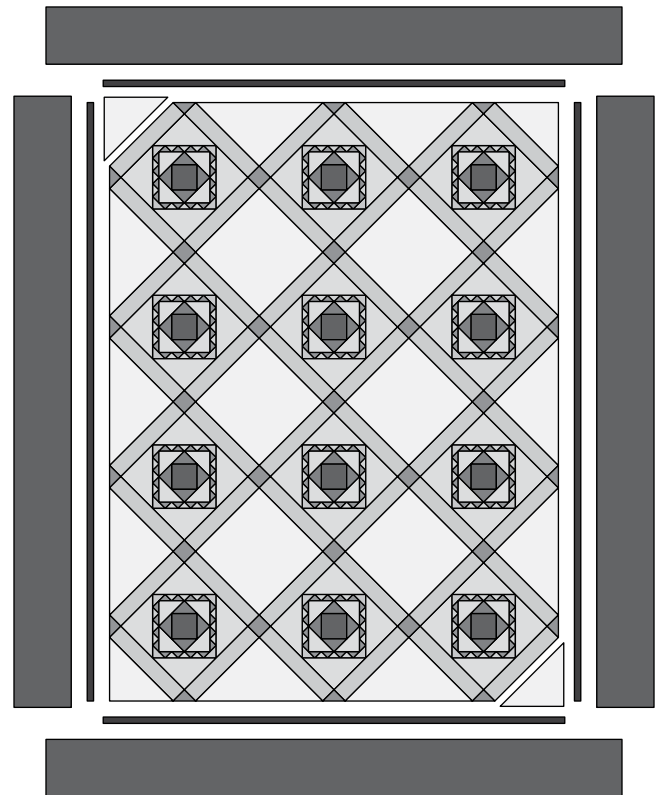
Borders

- Sew the 9 Medium Tonal Vine 1 $\frac{1}{2}$ " x 40" inner border strips together, end-to-end, to make one long strip. Press seams open.

- Measure length of quilt top through center. From the long strip, cut 2 inner border strips to this measurement, and sew to sides of quilt as shown in the Quilt Assembly Diagram. Press seams toward inner borders.
- Measure width of quilt top, including borders just added, through center. From the long strip, cut 2 inner border strips to this measurement, and sew to top and bottom of quilt. Press seams toward inner borders.
- Measure length of quilt top through center. Trim 2 of the Large Floral outer border strips to this measurement, and sew to sides of quilt. Press seams toward outer borders.
- Measure width of quilt top, including borders just added, through center. Trim remaining 2 Large Floral outer border strips to this measurement, and sew to top and bottom of quilt. Press seams toward outer borders.

Finishing

Layer quilt top, batting, and backing. Quilt as desired. Bind. Don't forget to sign and date your finished quilt.



Quilt Assembly Diagram

