



## 3D Pinwheel Table Runner 13" X 31" with Cathy Wildes

### Supplies Needed:

- 1 package 5" Squares (or 42 5" squares)
- ¼ yard for binding
- ½ yard for backing

## Coiled Rope Clothesline Basket with Sally Manke



### KIT Included with class

- 50 yards of cotton clothesline rope
- Clothesline wrapping tool (allows for faster, more even, tighter clothesline wrapping)
- metal spring clamp (used w/wrapping tool)
- Glue Stick

### SUPPLY LIST – You will need to bring from home:

- approximately 3/4 yard fabric (3 fat quarters or scraps)
- Strongly recommend batik for first basket (less raveling and smoother finished basket)
- Optional - button or bead to coordinate with fabric

### SEWING SUPPLIES – You will need to bring from home:

- Sewing Machine (With Zig Zag Stitch)
- Needles 90/14 or 100/16
- Open Toe Sewing Machine Foot (if Available)
- Thread (variegated works well) to coordinate with your fabrics

### STANDARD SEWING SUPPLIES

- Rotary Cutter
- Rotary Matt
- Ruler for Rotary Cutting
- Scissors for snipping thread
- Pins
- Tape Measure

HOMEWORK BEFORE CLASS (not required but gets students wrapping and stitching sooner)

- Cut fabric into 3/4" strips
- If using fat quarters, length will be between 18" and 21"
- If using scraps, length will vary. Aim for between 12" and 21"



## Dresden Neighborhood Mini Quilt 24" X 24" with Joy Lamphere

### Supplies Needed:

- Pattern Dresden Ruler - (both of these are acceptable :) )
- Easy Dresden or Creative Grids Dresden
- 2/3 yard background fabric
- Multiple scraps and pieces of fabric – the more the merrier
- Fusible Web – 2/3 yard
- Machine and Basic Sewing Supplies

## Confetti Landscape with Sally Manke

### KIT ITEMS Included with class

- Tulle to cover your project
- Metallic and Specialty Fibers for Highlights
- Specialty Yarns and Threads
- Bits and Piece of Novelty Fabrics

### SUPPLY LIST – You will need to bring from home:

- Backing Fabric - Fat Quarter (24 X 24 inches or slightly larger)
- Batting - (24 X 24 inches or slightly larger) - warm and natural works well

### DIG THROUGH YOUR SCRAPS OF **BATIK OR HAND DYED FABRICS** (same on both sides)

at least **3-4 of each color** (12'X12" or any combination of that size)

- Sky - 3 or 4 light blues, lavenders, pinks....think REALLY LIGHT COLORS
- Greens - 3 - 6 greens, reds, golds
- Sand - 2 - 3 tan shades
- Tree Trunks - 2 - 4 batik or prints - black, brown, gray, white or tree prints
- Foreground Flowers - 2-3 prints or batik
- Novelty yarns or glitter fabrics, just for fun - optional
- Flat Box to take project home (presentation board from Dollar Tree works well)

### PHOTO TO WORK FROM

- Instructor will bring assortment of landscape photos
- Feel free to bring your own landscape/treescape photo to work from

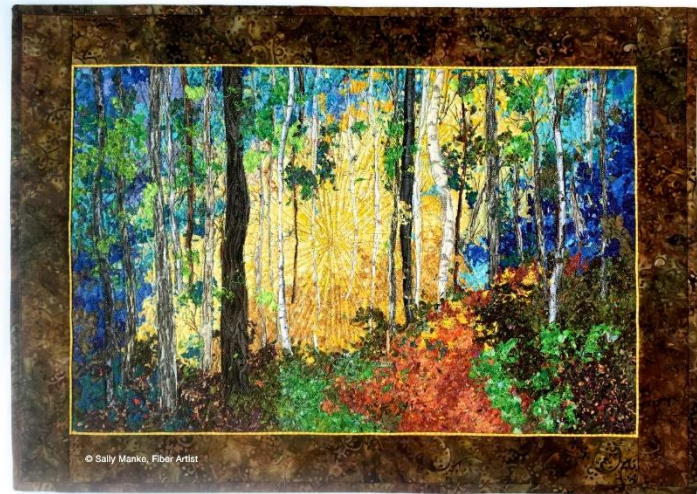
### SEWING SUPPLIES – You will need to bring from home:

- Sewing Machine
- Needles 90/14 or 100/16 top stitching
- Free Motion Foot (Stippling Foot)
- Thin (60-100 Weight) strong thread in soft gray (I like Superior Silk or Bottom Line)
- Various Machine Embroidery Threads - green, brown, tan, gray, blue

### STANDARD SEWING SUPPLIES

- Rotary Cutter (and old one works just fine)
- Rotary Matt
- Scissors for fussy cutting
- Lots and lots of quilting pins (**straight pins**)

NOTE - Printed fabric work well **ONLY** for tree trunks or flowers. Use batiks, hand dyed for confetti)



## Utensil Sewing Cup with Jennifer Williams



## Embellishments Class with Sally Manke

### KIT ITEMS INCLUDED WITH CLASS:

- Embellishment tool
- Sari silk ribbon - for one flower
- Wonderfil Specialty Threads - one classroom spool
- Novelty Yarns - for one flower
- Colored Burlap
- Accuquilt Flower Material

### SUPPLY LIST – You will need to bring from home:

- Variety of Beads or Buttons 1/2" to 1" for centers
- Bright colored old tee shirt to cut up (we can cut around stains or tears)
- Additional novelty yarns or metallic threads
- Fat Eighth of solid, batik or gingham fabric
- Wide Rickrack - about 48 inches
- Hand Sewing Needle - Large Eye to hold yarn
- Fabric Glue - like Aleenes All Purpose Multi Fabric Fusion
- Hot Glue and Hot Glue Gun - if you have one...we can share

### SEWING SUPPLIES – You will need to bring from home:

- Sewing Machine (Straight Stitch)
- Needles 80/12
- Open Toe Sewing Machine Foot (if Available)
- Thread (neutral silver or light gray works well)
- Tape Measure or ruler
- Scissors for snipping thread
- Pins





## **Sewing Machine Mat with Jennifer Williams**

### **Supplies Needed:**

- 2 – ½ yard cuts of coordinating fabric
- 1 package of Bosal In R Form Plus (18 x 53)
- 1/4 steam a seam
- 1/3 yard for binding