

**3rd District**

DIGHTON TOWN CO.



ATCHESON, TOPEKA AND SAITA FE RAILROAD

R. R. DEPOT

DIGHTON TOWN CO.  
N. E. 1/4 of S. E. 1/4 Sec 11

RESERVE - U

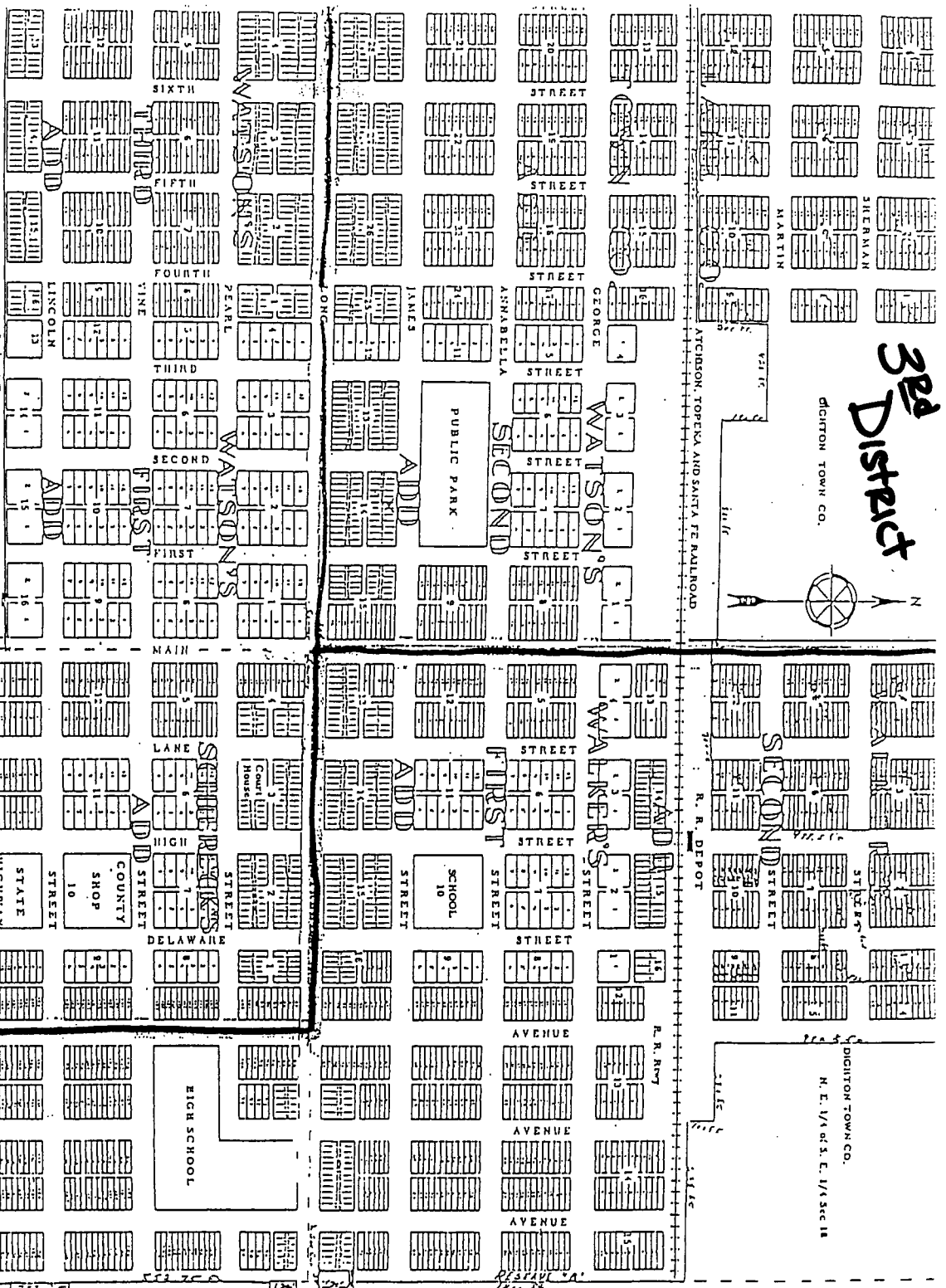
**1st District**

**2nd District**

# DIGHTON

LANE COUNTY KANSAS

ST. ON SEC. 11 & 15 T18 S. 28 W. 4, Sec 13 & 21 T. 18 S. R. 23 W.  
SCALE 200 FEET TO ONE INCH



**1st District**

N. Sec. 21

Can. Sec. 19

