

Mask with Filter Pocket-GK

Materials List

8"x17" double layer of cotton fabric (Bleachable fabric if possible)

Two 7" pieces of ¼" elastic

PREP THE SETS OF FABRIC

Placing the pattern piece A on doubled fabric that is right sides together, cut out 2 sets.

Placie pattern B on doubled fabric cut 2, one set.

Directions

With right sides together (If you cut your fabric with right sides together you should not have to change your pieces),sew edge A of all 3 sets using a ¼" seam allowance. Clip the curved edge every ½" or so to ease the curved seam. PRESS the seam open on all sets.

FILTER POCKET

On straight edge of filter pocket Pattern B, fold under ½" towards the wrong side of fabric and press, then fold over a second time a ½" and PRESS. SEW close to the inner edge of the folded seam.

ASSEMBLING THE MAIN PIECES TO THE FILTER POCKET

Using one main section and filter pocket, aligning at the center seam, pin the wrong side of the filter pocket to the right side of the main section, then repining as you go, place the second main section over the filter pocket matching right sides together. Repeat for the opposite edge.

SEW through all three layers along the long edges using a ¼" seam reversing where the filter pocket is joined for reinforcement. Repeat for the opposite edge.

Clip along the long edge and trim the middle layer of fabric at the peak only to reduce bulk in the seam.

TURNING

Turn the mask inside out making sure that the right side of the pocket fabric is facing out when turned. PRESS so the long seams lay flat.

PREPING THE ENDS

Turn and press ½" of the fabric to the inside of the end of the mask so all raw edges are inside the mask.

ADDING ELASTIC LOOPS

You will be sewing these in place as you topstitch around the mask.

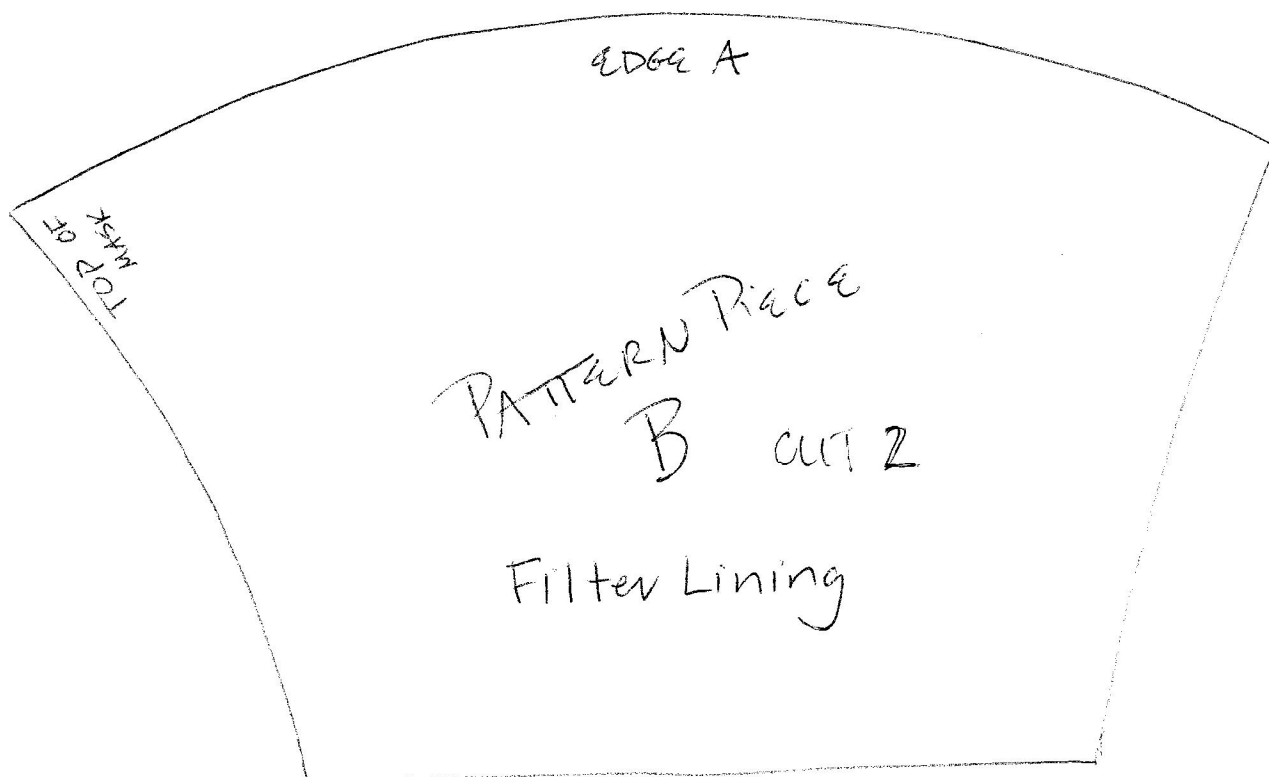
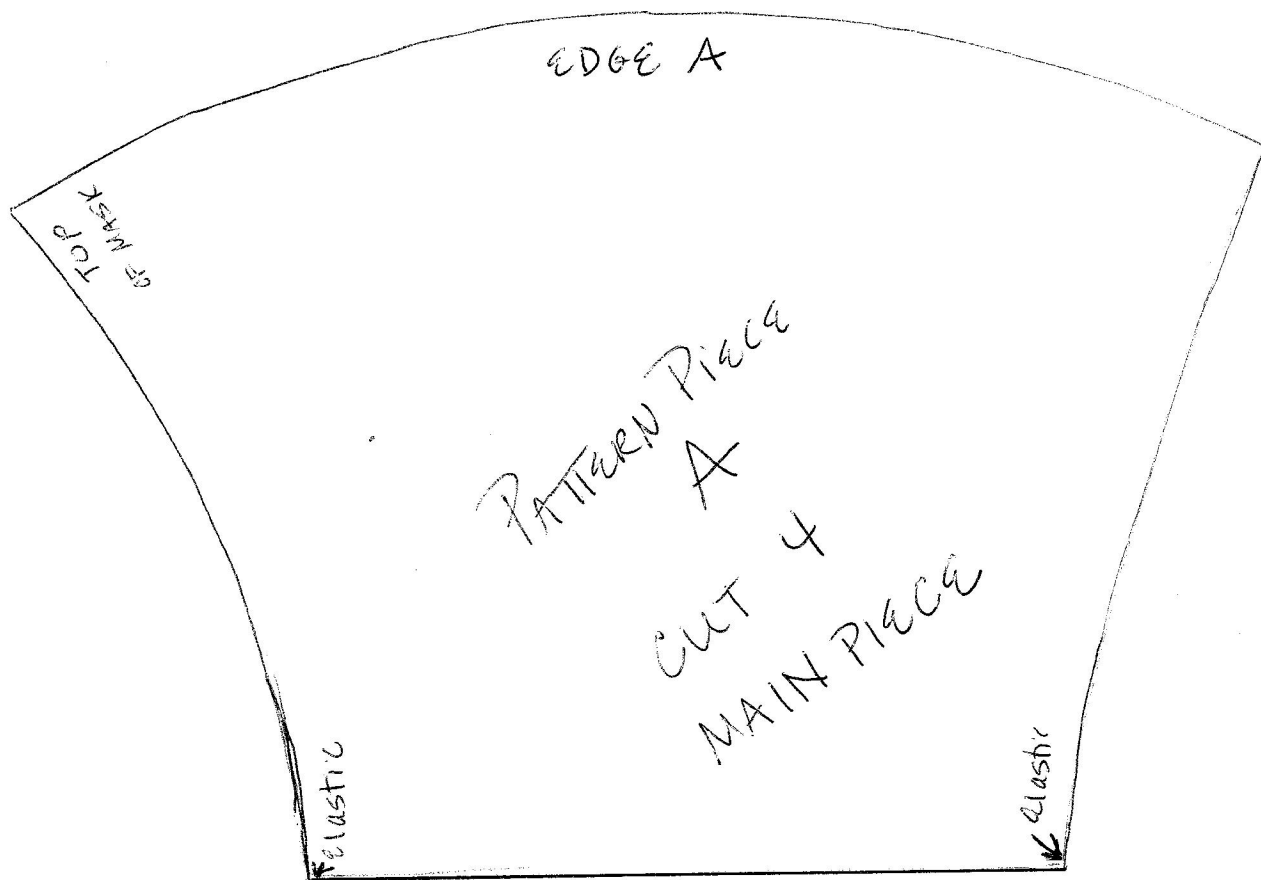
Place the end of the elastic inside the seam near the corner in about of ¼". Starting at the first corner and sewing close to the edge, about 1/8", top stitch heading towards the other corner and around the

mask inserting the elastic to create a loop being careful to not twist the elastic. Back stitch at the elastic to reinforce.

FILTER FABRIC

If impervious fabric is provided by the hospital, using the filter liner pattern C, cut one piece and place inside the pocket.

YOUR MASK IS COMPLETE. THANK YOU FOR YOUR WORK!



FILTER
PATTERN