

# DESIGN DATABASE TRANSFER

## Instruction and Reference Guide



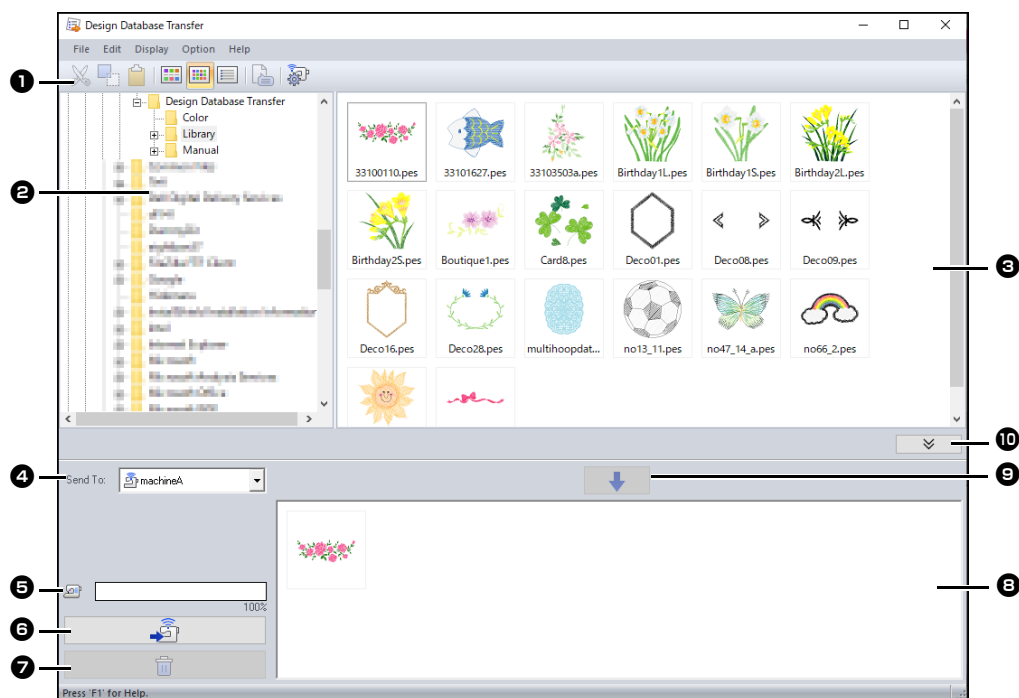
**FOR THE LOVE OF SEWING**

Baby Lock Consumer Helpline: 800-313-4110

[www.BabyLock.com](http://www.BabyLock.com)

Brought to You by Tacony Corporation®.

# Design Database Transfer Window



## 1 Toolbar

This contains available commands.

## 2 Folder pane

## 3 Contents pane

Displays thumbnails of all embroidery designs in the selected folder.

## 4 Send to selector

Select where the embroidery files will be written or sent.

## 5 Network machine capacity

Displays the amount of data that can be written on the machine that is the transfer destination.

## 6 Transfer button

Begins transferring the selected designs (displayed in the writing list).

## 7 Remove button

Returns the selected design (displayed in the writing list) to the unselected state.

## 8 Writing list

Displays the list of designs to be transferred to the embroidery machine.

## 9 Add button

Adds the design selected in the contents pane to the writing/transfer list.

## 10 Writing box display/non-display button

Click when writing/transferring designs. Click this button to hide or display the Writing list.



Settings for the following can be selected from the **Option** menu.

- Select **mm** or **inch** as the system units.
- Select **Blue**, **Black**, **Silver** or **Aqua** as the application color.
- Change the settings when importing a DST file to the application.
- Register machines that support wireless LAN in the application.

# Transferring Embroidery Designs to Machines



Transfer embroidery data to a machine from the application via wireless LAN. Before performing this operation, check that the machine you are using supports wireless LAN.

## Registering a machine that supports wireless LAN in the application

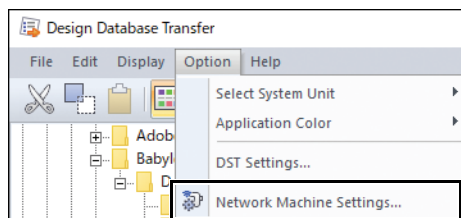



- 1 Connect the computer running the application to your home network (wireless LAN access point).
- 2 Connect the sewing machine to the same home network.  
For details on making connections, refer to the manual provided with your machine.



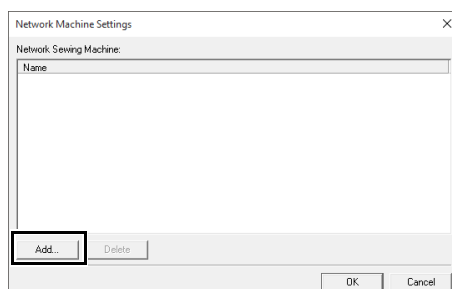
Embroidery patterns cannot be transferred if the computer and sewing machine are connected to different home networks. Be sure to connect to the same home network.

- 3 Click **[Network Machine Settings]** in the **[Option]** menu.

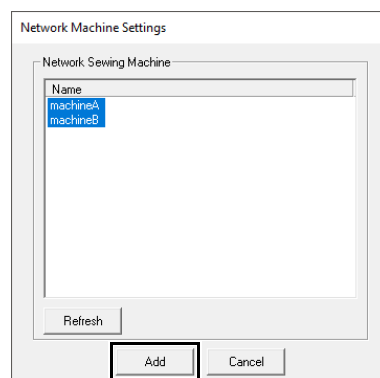


The same operation can be performed by clicking the  on the tool bar.

- 4 Click **[Add]**.

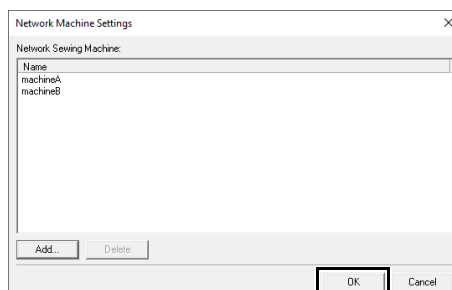


- 5 Select the sewing machine, and then click **[Add]**.



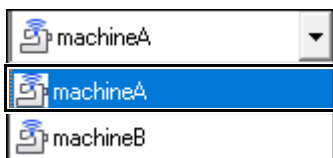
If the desired sewing machine does not appear in the list, click **[Refresh]**.

- 6 Click **[OK]** to register the machine.




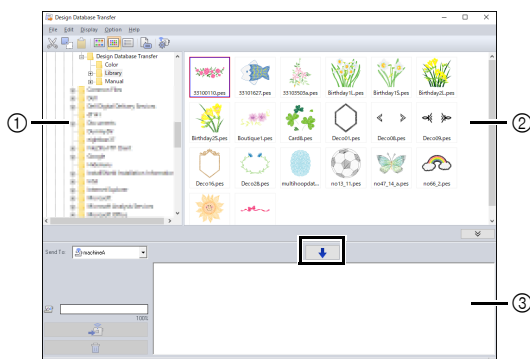
## Transferring embroidery data to a machine from the application

- 1 Select the machine in the **[Send To]** selector.





- 2 In the folder pane, select the folder that has the saved embroidery data to be transferred.


- 3 Select an embroidery file from the contents pane, and then click  to add the file to the writing list.

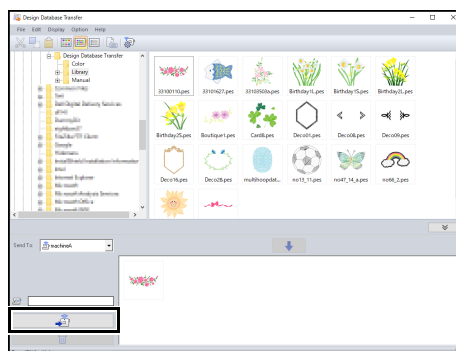


- ① Folder pane
- ② Contents pane
- ③ Writing list



- The following file formats can be transferred to the machine.  
.pes, .phc, .phx, .dst  
Of the files described above, only file formats that can be used by the machine receiving the transfer can be imported. For the usable file formats, refer to the instruction manual provided with your machine.
- The following file formats are displayed in the contents view, but cannot be transferred to the machine.  
.exp, .pcs, .hus, .vip, .shv, .jef, .sew, .csd, .xxx
- Zipped files cannot be read in this application.
- Check whether the size of the pattern to be transferred fits within the sewing area of the machine. Check the size of the pattern by clicking  after selecting the embroidery design, or clicking  on the tool bar.
- Up to 50 files can be transferred at one time.

- 4 After all embroidery files to be transferred are added to the writing list, click .



- The designs in the writing list are transferred to the machine.
- When the transfer is finished, the message "Finished outputting data." appears.



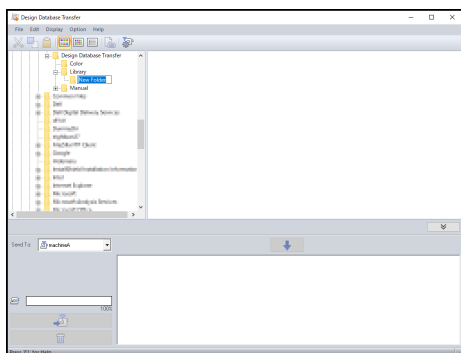
For the method for recalling patterns on the machine via wireless network, refer to the instruction manual provided with your machine. The screens will differ depending on the machine model.



# Organizing Embroidery Designs

## Creating new folders

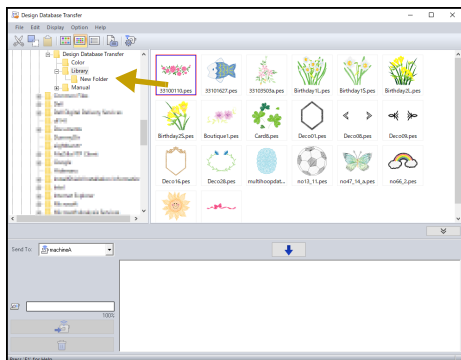
- 1 In the folder pane, on the left, select the folder.
- 2 Click **[File]**, then **[Create New Folder]**.



- 3 Type in the name of the new folder, and then press the **<Enter>** key.

## Moving/copying files to a different folder

- 1 In the folder pane, click the folder that contains the embroidery design.
- 2 In the folder pane, locate the folder where you want to move the embroidery design.
- 3 Drag the embroidery design in the contents pane to the folder you previously located in the folder pane.



- If the two folders are on the same drive, the selected embroidery design is **moved** to the other folder.
- If the two folders are on separate drives, the selected embroidery design is **copied** into the other folder.



- To copy the file from one folder to another on the same drive, hold down the **<Ctrl>** key while dragging the embroidery design.
- To move the file from one folder to another on different drives, hold down the **<Shift>** key while dragging the embroidery design.
- The file can also be removed from the current folder (or copied) by selecting the menu command **[Edit] - [Cut]** (or **[Edit] - [Copy]**). Then, the file can be added to the new folder by selecting it in the folder pane, then selecting the menu command **[Edit] - [Paste]**.

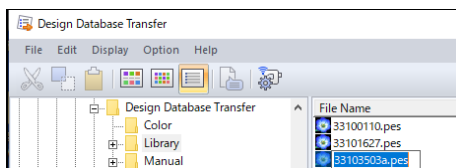
## Changing file names



The names of embroidery designs can be changed only when the sewing information (menu command **[Display] - [Details]**) is displayed.

►► "Changing how files are displayed" on page 5

- 1 In the folder pane, select the folder containing the embroidery design.
- 2 Select the embroidery design. Then click again.



- 3 Type in the new name of the embroidery design, and then press the **<Enter>** key.



When renaming a file, the file extension cannot be changed.

## Deleting files

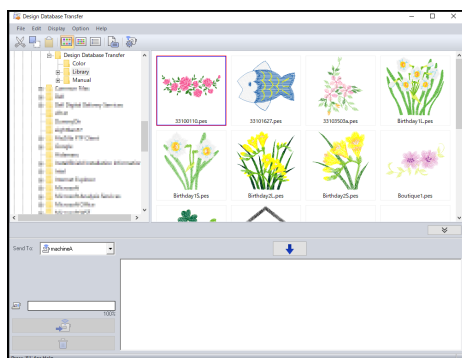
- 1 In the folder pane, select the folder containing the embroidery design that you want to delete.
- 2 In the contents pane, select the name of the embroidery design.
- 3 Press the **<Delete>** key.  
→ The file is moved to the Recycle Bin.

## Changing how files are displayed

The embroidery designs in the contents pane can be displayed as large thumbnails or small thumbnails, or they can be listed by their sewing information.

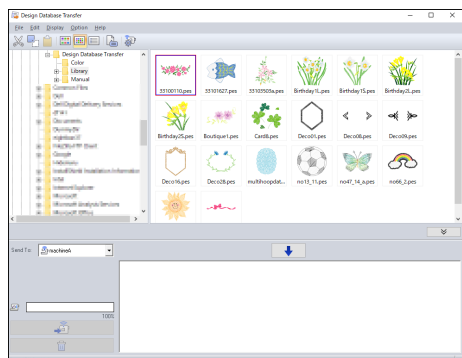
### Large Thumbnails

Click  or click **[Display]**, then **[Large Thumbnails]**.



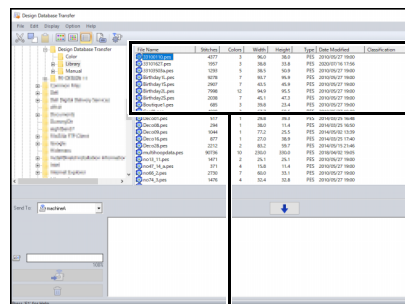

### Small Thumbnails

Click  or click **[Display]**, then **[Small Thumbnails]**.



## Sewing information

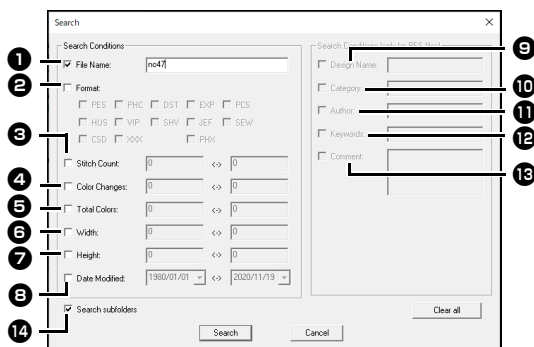
Click  or click **[Display]**, then **[Details]**.

| File Name       | Stitches | Colors | Width | Height | Type | Date Modified    | Classification |
|-----------------|----------|--------|-------|--------|------|------------------|----------------|
| 33100110.pes    | 4277     | 3      | 96.0  | 38.0   | PES  | 2010/05/27 15:05 |                |
| 33100102.pes    | 1957     | 3      | 38.0  | 33.0   | PES  | 2010/07/16 17:05 |                |
| 33100103a.pes   | 1259     | 5      | 38.5  | 50.9   | PES  | 2010/05/27 19:00 |                |
| Birthday15.pes  | 6278     | 7      | 19.7  | 90.9   | PES  | 2010/05/27 19:00 |                |
| Birthday15a.pes | 2907     | 7      | 43.5  | 45.9   | PES  | 2010/05/27 19:00 |                |

# Searching for an Embroidery Design

- 1 In the folder pane, select the folder.
- 2 Click **[File]**, then **[Search]**.
- 3 Specify the search conditions. Select the check box of the search conditions to be specified.



- 1 **File Name**  
Select to search for files with a specific file name. Type the file name in the box.



Wildcard characters ("?" to represent a single character and "\*" to represent multiple characters) can also be used.

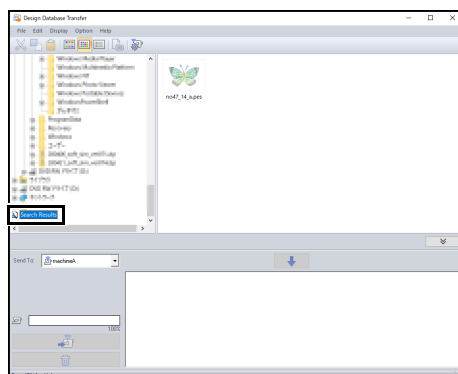
- 2 **Format**  
Select the check box beside the desired file format.
- 3 **Stitch Count**  
In the boxes, type the lower and upper limits of the range for the number of stitches.
- 4 **Color Changes**  
In the boxes, type the lower and upper limits of the range for the number of color changes.
- 5 **Total Colors**  
In the boxes, type the lower and upper limits of the range for the total number of thread colors.
- 6 **Width**  
In the boxes, type the lower and upper limits of the width range.
- 7 **Height**  
In the boxes, type the lower and upper limits of the height range.

- 8 **Date Modified**  
In the boxes, type the modification date range (from when to when).  
  
When searching for .pes files, the following conditions can also be specified.
- 9 **Design Name**  
Type the design name in the box.
- 10 **Category**  
In the box, type specific characters or the embroidery category.
- 11 **Author**  
In the box, type the author's name to be searched for.
- 12 **Keywords**  
In the box, type the keyword to be searched for.
- 13 **Comment**  
In the box, type the comment to be searched for.



- To also search through the subfolders (folders within the selected folder), select the **[Search subfolders]** 14 check box.
- All characters entered in the box beside **[File Name]** will be considered as a single set of characters. However, you can search for files matching multiple words in the boxes below **[Search Conditions (only for PES files)]** by separating the words with a space.

- 4 Click **[Search]**.  
→ A list of files matching the specified search conditions appears.



# Checking Embroidery Designs

## Checking file information

Sewing information such as the file name, size, stitch count, sewing time, color count and modification date can be checked in the Property dialog box.

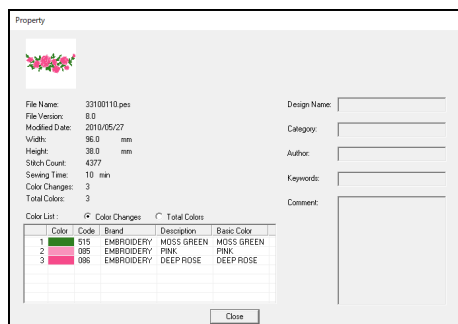


The displayed sewing time is an estimate. The actual sewing time depends on the machine model used and the specified settings.

1 In the contents pane, select the embroidery design corresponding to the information that you want to view.

2 Click , or click **[Display]** menu, then **[Property]**.

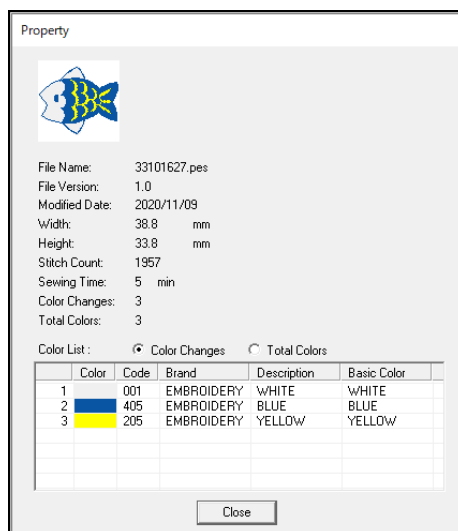
- When opening PES files (version 4.0 or later), the following **[Property]** dialog box will be displayed.



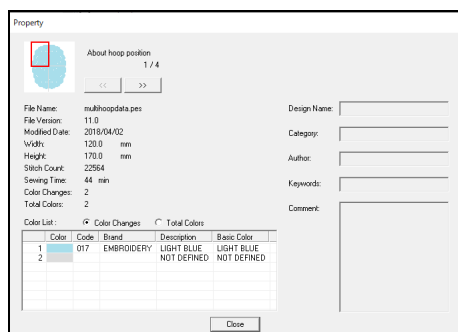
- The information shown in the color list can be switched.
  - ◆ **Color Changes**  
The thread color information for each color change is displayed. This allows you to check the total number of thread color changes.
  - ◆ **Total Colors**  
The thread color information for the necessary threads is displayed. This allows you to check the total number of thread colors.
- The colors corresponding to the 61 basic Palette colors are listed under **[Basic Color]**.



- When opening Non-PES files or PES files (version 3.0 or earlier), the following **[Property]** dialog box will be displayed.



- Depending on the settings of the embroidery data, a **[Property]** dialog box similar to the one shown below appears.



- The red box in the dialog box shows the position of the displayed pattern section.
- To display information for other hoop positions, click or .

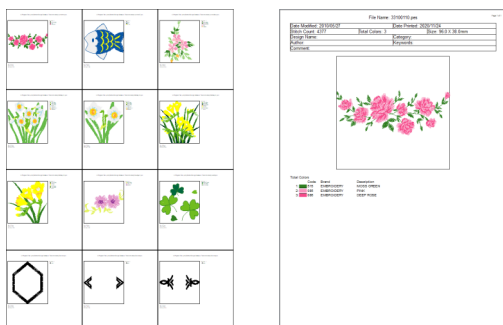


# Outputting a Catalog of Embroidery Designs

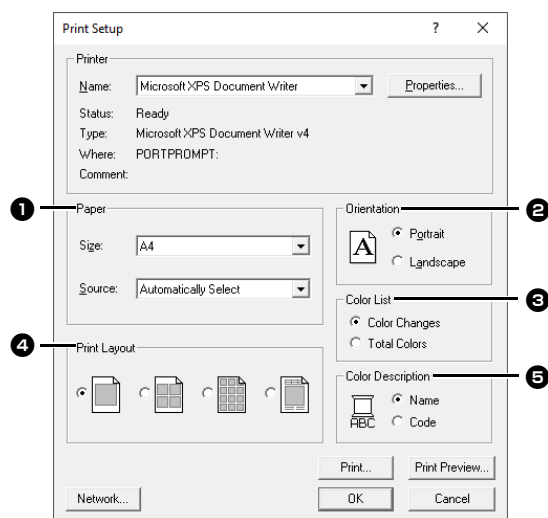
Images and sewing information for all embroidery designs can be outputted in a number of formats. Select among the following modes according to your preferences.

## Printing

Images of all embroidery designs in the selected folder can be printed as a catalog or as an instruction guide.



- 1 In the folder pane, select the folder containing the embroidery designs.
- 2 Click **[File]**, then **[Print Setup]**.
- 3 Under **[Paper]** ① and **[Orientation]** ②, select the appropriate settings.



- 4 Select **[Color List]** ③.

### Color changes

The thread color information for each color change is displayed.

### Total colors

The thread color information for the necessary threads is displayed. This allows you to check the total number of thread colors.

►► "Checking file information" on page 7

- 5 Select **[Print Layout]** ④.

- 6 Under **[Color Description]** ⑤, select whether the thread colors appear as the name of the color or as the brand and thread number.

- 7 Click **[Print]**.

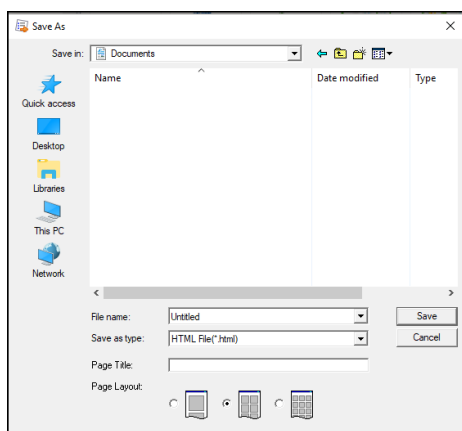


- If one or more embroidery designs were selected in the contents pane, only the selected designs are printed.
- If the brand name, thread number or file properties is too long, some of the text may not be printed.
- If **[File]**, then **[Print]** is clicked, the embroidery designs are printed according to the settings already selected in the **[Print Setup]** dialog box.

## Outputting as Image and HTML Files

Instead of being printed, the catalog of embroidery designs can be outputted as image and HTML files.

- 1 In the folder pane, select the folder containing the embroidery designs.
- 2 Click **[File]**, then **[Create Image File and HTML]**.
- 3 Select the drive and the folder, and then type in the name of the HTML file.



- 4 To add a title at the top of the file and in the title bar, type the title in the **[Page Title]** box.
- 5 Under **[Page Layout]**, select how the designs appear on the page.
- 6 Click **[Save]**.



A folder with the HTML file name is added to the folder where the HTML file is saved, and the image files are saved inside that added folder.

## Outputting as a CSV file

A .csv file containing the sewing information (file name, dimensions, number of stitches, number of colors, file path, file properties (.pes files only) and the names of thread colors and thread numbers) for selected embroidery designs can be outputted.

- 1 In the folder pane, select the folder containing the embroidery designs.
- 2 Click **[File]**, then **[Create CSV]**.
- 3 Select the drive and the folder, and then type in the name of the .csv file.
- 4 Click **[Save]**.