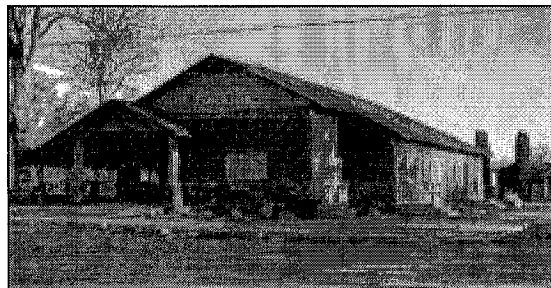


**WEBER COUNTY SHERIFF'S OFFICE
UINTAH CITY
MONTHLY STATISTICS**

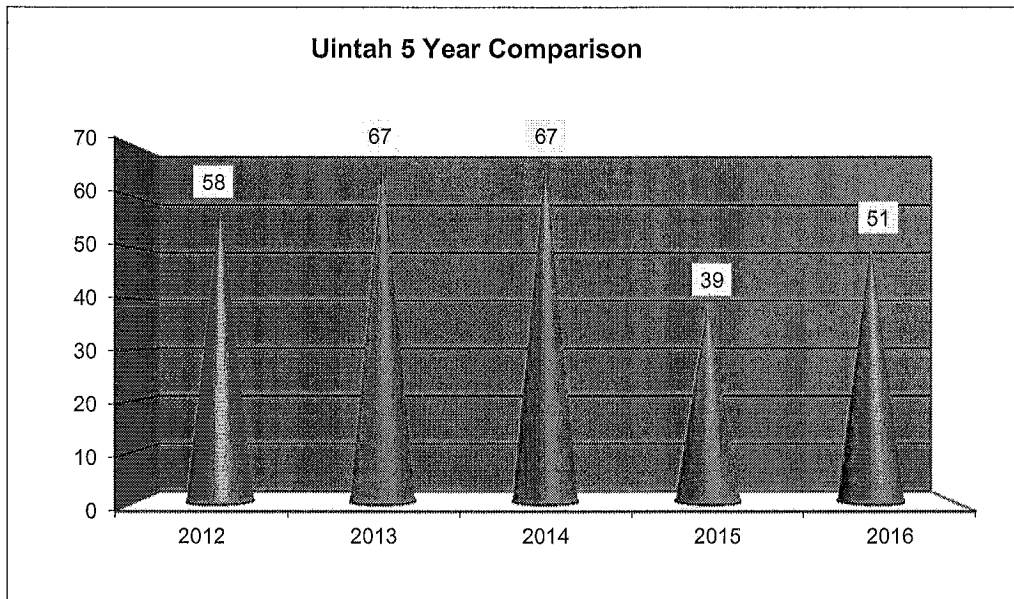


MAY 2016

UINTAH CITY *CALLS FOR SERVICE FOR THE MONTH OF MAY 2016

*Calls that were received at our dispatch center and officers were dispatched on

58	67	67	39	51
2012	2013	2014	2015	2016



18 MONTHS CALLS FOR SERVICE

Dec-14

Call Types	Count
29D2P	1
911C	1
911H	1
9E1	1
ANCO	2
BURG	1
CHAB	1
CIPA	1
CRMI	1
EXPA	2
FIOT	1
FRAU	1
INFO	2
KEPE	2
MOAS	1
PROW	1
REDR	4
SAHA	1
SHFI	1
SUCI	1
THRE	1
TRAC	3
TRESIP	2
TRHA	5
TRST	14
UNTR	2
VIIN	1
Grand Total	55

Jan-15

Call Types	Count
26Z	1
29B1	1
29B4U	1
2D2	1
6D2	3
8709	1
911C	1
9E1	1
ABVE	1
ANCO	1
ASSI	1
ATL	1
CRMI	2
DIFA	1
FRAU	2
INFO	1
KEPE	1
MOAS	1
PRCH	8
REDR	5
REPO	1
SAHA	1
SHFI	1
THSU	1
TRAC	4
TRACHR	1
TRST	24
VEBU	1
VIIN	1
WECH	3
Grand Total	73

Feb-15

Call Types	Count
26D1	1
29D2P	2
911H	1
911M	1
ALBU	1
ANCO	2
ASOJ	1
ASSI	1
CHAB	1
COPO	1
CUIN	1
DUI	1
EXPA	4
FRAU	1
MOAS	4
PRCH	30
REDR	7
SAHA	1
SUVE	3
TRAC	7
TRHA	5
TRST	28
VIIN	1
VIOR	1
Grand Total	106

Mar-15

Call Types	Count
13C1	1
26A1	2
26D1	1
29B3	1
31D3	1
911H	1
ANCO	4
ASOJ	1
BADO	1
COPO	1
DIFA	1
DIJU	1
FIGR	2
FRAU	2
ILBU	1
MOAS	4
NAGL	1
OUPE	1
PRCH	2
PRDA	1
REDR	4
SEOF	1
SMAR	2
SUCI	2
SUCIIP	1
SUVE	1
TRAC	4
TRHA	4
TRST	15
VIOR	1
WECH	1
Grand Total	66

Apr-15

Call Types	Count
25B6V	1
29B4U	1
6C1	1
911U	1
9E5	1
ACDA	1
ANCO	7
BURGJO	1
CHAB	1
CRMI	3
DINE	1
DIST	2
FIGR	1
FIOT	1
FIST	2
FRAU	2
KEPE	1
LITT	1
POFI	1
PRCH	7
REDR	4
SEOF	1
SMAR	1
THEF	1
TRAC	2
TRACHR	1
TRHA	7
TRST	15
VIIN	2
Grand Total	71

May-15

Call Types	Count
11D1	1
17B1	1
25B2V	1
29B1	1
32B2	1
6D2	1
911H	1
9D1	1
9E1	1
ABVE	1
ANCO	2
ASSI	3
BUOJ	1
BURG	1
BURGAT	1
COPO	1
CRMI	1
FIAS	1
INFO	2
MOAS	1
PRCH	1
REDR	3
SUCI	1
SUVE	1
SUVEIP	1
THSU	2
TRHA	3
TRST	12
VIIN	3
Grand Total	51

Jun-15

Call Types	Count
Alarm Burglar	1
Animal Control	1
Assist Other Ju	1
Assistance	1
Community Po	4
Criminal Misch	1
Disturbance	2
Disturbance Fa	2
Disturbance Ju	1
Disturbance Ne	1
Fire - Grass	1
Fire - Structure	2
Foot Patrol	1
Information	1
Littering	1
Medical	9
Message	1
Motorist Assist	4
Private Tow	2
Reckless Drive	4
Safety Hazard	1
Suspicious Per	1
Suspicious Per	2
Threats	2
Traffic Acciden	3
Traffic Hazard	6
Traffic Stop	19
Trespass	1
Unknown Trou	1
Vehicle Burglar	5
Vehicle Theft	1
Vin Inspection	2
Grand Total	85

July-15

Call Types	Count
10D2	1
29A1	1
29B1	1
29B4U	1
4B1A	1
911H	2
ALBU	3
ANCO	1
ASOJ	2
ASSI	1
COPO	3
CRMI	1
DIFI	1
FICA	1
FIDU	1
FIGR	1
FIRE	1
INFO	1
KEPE	1
MOAS	3
PRCH	2
PRFO	1
REDR	6
RUNA	1
SAHA	1
SUCI	2
THSU	1
TRAC	1
TRES	1
TRHA	2
TRST	15
VIIN	1
VIOR	1
WECH	1
Grand Total	64

Aug-15

Call Types	Count
10C1	1
28C11L	2
29A1	1
29B3U	1
29B4U	1
31D2	1
911C	1
911M	1
ALBU	2
ANCO	2
ASFD	1
ASSA	1
ASSI	1
CRAN	1
CRMI	2
DUI	2
EXPA	2
HARA	3
MATA	1
MOAS	1
OUPE	1
PRCH	3
PRDA	1
REDR	5
REPO	1
RUNA	1
SAHA	2
SORC	1
SUCI	3
SUVE	2
TRAC	9
TRACHR	1
TRHA	3
TRST	19
VIIN	1
Grand Total	81

Sep-15

Call Types	Count
17A1	1
29B1	2
29B4	1
911H	1
ABVE	1
ACMD	1
ALBU	1
ALFI	1
ASOJ	1
ASSI	2
CRAN	1
CRMI	1
DIFA	3
DINO	1
DIST	1
EXPA	1
EXPL	1
INFO	2
KEPE	2
MOAS	1
PRCH	1
PRDA	1
REDR	2
REPO	2
SUCI	1
SUVE	1
TRAC	4
TRACHR	2
TRHA	4
TRST	5
VIIN	2
Grand Total	51

Oct-15

Call Types	Count
12A2	1
23C1I	1
26D1	1
29B4	1
29B4U	1
29O1	1
32B2	1
911U	1
9D2	1
ALBU	3
ALHO	1
ANCO	5
ASSI	2
BRTR	1
CHNE	1
COPO	1
CUIN	2
DIFA	1
DIPA	1
FOPA	1
ILBU	1
INFO	1
KEPE	3
NAGL	1
PRCH	2
REDR	4
THEF	1
TRAC	4
TRHA	4
TRST	10
WECH	1
Grand Total	60

Nov-15

Call Types	Count
26C2	1
29B1	1
29B4	1
29O1	2
31D3	2
ALFI	2
BUOJ	1
BURG	1
DIFA	2
EXPA	3
FIST	1
FRAU	1
ILBU	1
INFO	1
KEPE	1
MESS	1
MOAS	2
PRDA	2
REDR	5
SAHA	1
SHFI	1
STPR	1
SUCI	2
SUVE	1
THEFJO	1
THRE	1
TRAC	9
TRCO	1
TRHA	4
TRST	15
VETH	1
VIOR	1
WIPR	1
Grand Total	71

2015 Year To Date:856

Dec-15

Call Types	Count
10D2	2
17A1G	2
21B1	1
26C1	1
29B1	2
29B4U	1
31D3	1
32B2	1
ACDA	1
ALBU	1
ALFI	2
ANCO	1
ASSI	3
CHAB	1
COPO	1
CUIN	1
DIFA	1
DIJU	1
EXPA	3
MAWG	1
MOAS	10
POFI	2
POLD	1
PRCH	4
REDR	4
REPO	1
SAHA	1
SUCIIP	1
SUPE	1
SUVEIP	1
THEF	1
THRE	2
TRAC	6
TRHA	7
TRST	4
VIIN	1
WIPR	2
Grand Total	77

Jan-16

Call Types	Count
17D3	1
1C5	1
29B4	1
29B4U	2
29D2	1
29Z	1
ALBU	1
ALFI	1
ANCO	6
ASSI	1
BURGIP	1
COPO	1
DIFA	1
DINE	1
EXPA	2
MOAS	1
PRCH	8
REDR	4
SUCI	2
THSU	1
TRAC	9
TRCO	1
TRHA	10
TRST	12
VIOR	1
WECH	1
Grand Total	72

Feb-16

Call Types	Count
17A1	1
23D1	1
25D1	1
29B4U	1
29D2P	1
32D1	1
ACDA	1
ACMD	1
ANCO	2
ASOJ	2
ASSA	1
ASSI	2
CHAB	1
COPO	1
CRMI	1
DIFA	2
EXPA	1
FOUP	1
FRAU	1
INFO	2
KEPE	1
MESS	1
MOAS	4
POFI	1
PRCH	9
PRDA	1
REDR	5
SAHA	2
SUCI	2
TRAC	2
TRACHR	1
TRHA	3
TRST	14
Grand Total	71

2016 Year To Date:	301
---------------------------	------------

Mar-16

Call Types	Count
Falls, Alpha	1
Overdose	1
Traffic incident	2
medical Alarm	1
Animal Comp.	1
Assist	3
Assist OJ	1
Barking Dog	1
Community Policing	1
Criminal Mischief	1
Dead Animal	2
Extra Patrol	1
Disturbance Family	1
Follow Up	1
Property Found	1
Grass Fire	1
Alarm Hold Up/Panic	1
Disturbance Juvenile	1
Keep The Peace	1
Motorist Assist	2
Premises Check	8
Safety Hazard	1
Suspicious Circumstances	1
Suspicious Person	1
Suspicious Vehicle	1
Threats	1
Traffic Accident PD	4
Traffic Hazard	4
Vin Inspection	1
Grand Total	47

Apr-16

Call Types	Count
Diabetic Problem	1
Traffic Incident	1
Unconscious/Fainting	1
Cardiac Arrest	1
Animal Control - Bite	1
Animal Complaint	5
Assist	5
Assist Other Jurisdiction	1
Alarm Burglary	2
DUI	1
Extra Patrol	2
Disturbance Fight	2
Follow Up	1
Fraud	1
Burning Illegally	1
Motorist Assist	2
Natural Gas Leak	1
Disturbance noise	1
Violation of Order	1
Premises check	3
Private Tow	2
Reckless Driver	1
Safety Hazard	1
Suspicious Vehicle	2
Telephone Harassment	1
Theft In Progress	1
Traffic Accident PD	3
Traffic Hazard	4
Traffic Stop	1
Trespassing in Progress	1
Vin Inspection	7
Warrant	1
Disturbance Weapon	1
Grand Total	60

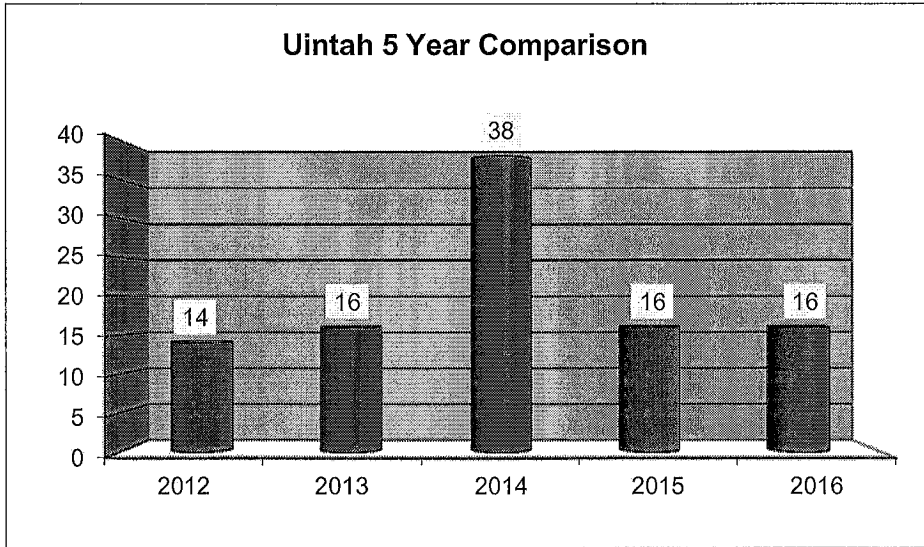
May-16

Call Types	Count
Falls-Delta	1
Traumatic injury - Bravo	1
Abandoned Vehicle	2
Animal Control - Bite	1
Animal Complaint	3
Assist	1
Assist Other Jurisdiction	3
Alarm Burglary	2
Child Neglect in progress	1
Community Policing	1
Criminal Mischief	1
Disturbance	1
Extra Patrol	2
Disturbance Family	2
Grass Fire	1
Disturbance Juvenile	1
Keep the Peace	2
Motorist Assist	2
Disturbance neighbor	1
Disturbance noise	1
Violation of an Order	2
Fire - Other	1
Out with Pedestrian	1
Private Tow	1
Reckless Driver	1
Suspicious Circumstance	1
Suspicious Person In Progress	1
Suspicious Vehicle	2
Traffic Accident PD	2
Traffic Accident Private Property	1
Traffic Hazard	5
Trespassing in Progress	1
Vin Inspection	1
Disturbance Weapon	1
Grand Total	51

UINTAH CITY CITATION 5 YEAR COMPARISON FOR THE MONTH OF MAY 2016

14	16	38	16	16
2012	2013	2014	2015*	2016*

* This figure was received from Uintah JP Court and does not include any citations that were issued as warnings.



UINTAH CITY CRIME CALENDAR 2016



THEFT Zero occurred every 31 days

BURGLARY Zero occurred every 31 days

ASSAULTS One occurred every 31 days