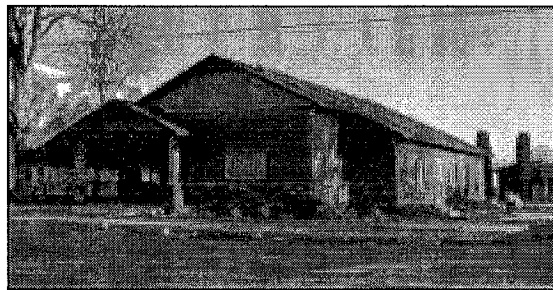


**WEBER COUNTY SHERIFF'S OFFICE  
UINTAH CITY  
MONTHLY STATISTICS**



**JULY 2016**

Calls for Service that generated a police report

## REPORTS GENERATED FOR UINTAH CITY FOR THE MONTH OF JULY 2016



### Weber County Sheriff's Office Law Total Incident Report, by Offense Codes

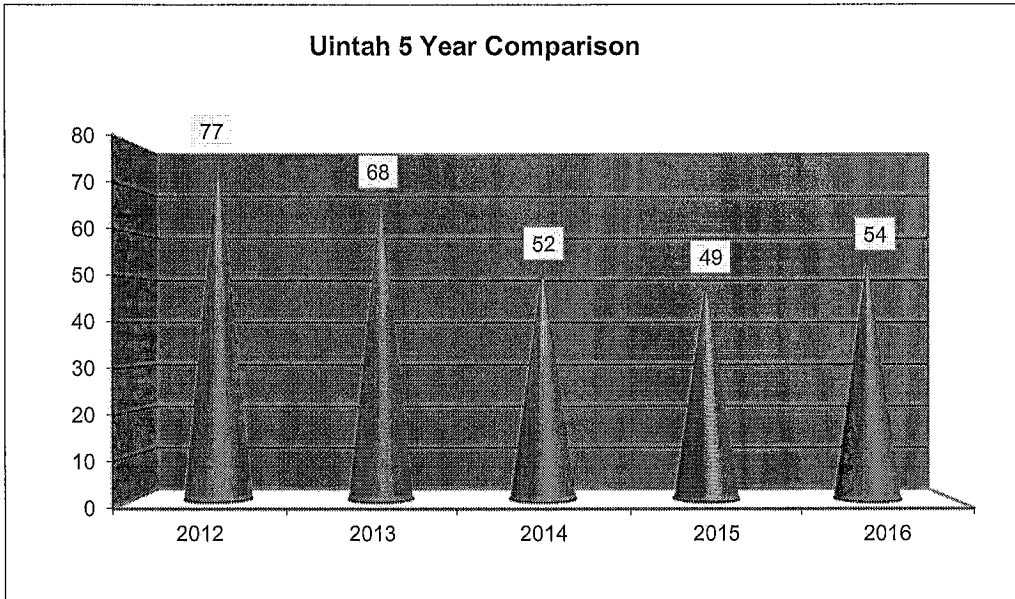
Agency: Weber County Sheriff's Office

<u>Offense Code</u>	<u>Total Incidents</u>
SIMPLE ASSAULT (1313)	2
BURG -NO FORCE ENTRY NON RESID (2205)	1
LARC - FROM BUILDING (2308)	1
STOL VEH - PASSENGER VEHICLE (2404)	1
RECOVERED STOLEN VEH (LOCAL) (2418)	1
CRUEL 2 CHLD/ABUSE NON VIOLENT (3802)	1
DOMESTIC CRIMINAL NATURE (3850)	2
MENTAL PSYCHO (5356)	1
SUSPICIOUS ACTIVITY (5359)	1
ANIMAL PROBLEMS (5369)	3
ANIMAL UNLICENSED (5381)	1
REPORTABLE ACCIDENT (5435)	4
ACCIDENT PI (5472)	1
ABANDONED VEHICLE (5482)	1
OBSCENE COND/LEWDNESS CHILD (7296)	1
FOUND BIKE (7307)	1
DEATH UNATTENDED (7315)	1
PUBLIC INTOXICATION (7316)	1
CITIZEN ASSIST (7327)	1
ASSIST OTHER JURISDICTION (8003)	1
MEDICAL ASSIST (8004)	1
EXTRA PATROL (8008)	1
WELFARE CHECK (8013)	1
UNGOVERNABLE JUVENILE (8104)	1
BUSINESS SECURITY CHECK (8403)	1
COMMUNITY POLICING (8409)	1
<b>Total Incidents for This Agency</b>	<b>33</b>

# UINTAH CITY \*CALLS FOR SERVICE FOR THE MONTH OF JULY 2016

\*Calls that were received at our dispatch center and officers were dispatched on

77	68	52	49	54
2012	2013	2014	2015	2016



## Feb-15

Call Types	Count
26D1	1
29D2P	2
911H	1
911M	1
ALBU	1
ANCO	2
ASOJ	1
ASSI	1
CHAB	1
COPO	1
CUIN	1
DUI	1
EXPA	4
FRAU	1
MOAS	4
PRCH	30
REDR	7
SAHA	1
SUVE	3
TRAC	7
TRHA	5
TRST	28
VIIN	1
VIOR	1
<b>Grand Total</b>	<b>106</b>

## Mar-15

Call Types	Count
13C1	1
26A1	2
26D1	1
29B3	1
31D3	1
911H	1
ANCO	4
ASOJ	1
BADO	1
COPO	1
DIFA	1
DIJU	1
FIGR	2
FRAU	2
ILBU	1
MOAS	4
NAGL	1
OUPE	1
PRCH	2
PRDA	1
REDR	4
SEOF	1
SMAR	2
SUCI	2
SUCIIP	1
SUVE	1
TRAC	4
TRHA	4
TRST	15
VIOR	1
WECH	1
<b>Grand Total</b>	<b>66</b>

## Apr-15

Call Types	Count
25B6V	1
29B4U	1
6C1	1
911U	1
9E5	1
ACDA	1
ANCO	7
BURGJO	1
CHAB	1
CRMI	3
DINE	1
DIST	2
FIGR	1
FIOT	1
FIST	2
FRAU	2
KEPE	1
LITT	1
POFI	1
PRCH	7
REDR	4
SEOF	1
SMAR	1
THEF	1
TRAC	2
TRACHR	1
TRHA	7
TRST	15
VIIN	2
<b>Grand Total</b>	<b>71</b>

# 18 MONTHS CALLS FOR SERVICE

May-15

Call Types	Count
11D1	1
17B1	1
25B2V	1
29B1	1
32B2	1
6D2	1
911H	1
9D1	1
9E1	1
ABVE	1
ANCO	2
ASSI	3
BUOJ	1
BURG	1
BURGAT	1
COPO	1
CRMI	1
FIAS	1
INFO	2
MOAS	1
PRCH	1
REDR	3
SUCI	1
SUVE	1
SUVEIP	1
THSU	2
TRHA	3
TRST	12
VIIN	3
<b>Grand Total</b>	<b>51</b>

Jun-15

Call Types	Count
Alarm Burglar	1
Animal Control	1
Assist Other Ju	1
Assistance	1
Community Po	4
Criminal Misch	1
Disturbance	2
Disturbance Fa	2
Disturbance Ju	1
Disturbance Ne	1
Fire - Grass	1
Fire - Structure	2
Foot Patrol	1
Information	1
Littering	1
Medical	9
Message	1
Motorist Assist	4
Private Tow	2
Reckless Drive	4
Safety Hazard	1
Suspicious Per	1
Suspicious Per	2
Threats	2
Traffic Acciden	3
Traffic Hazard	6
Traffic Stop	19
Trespass	1
Unknown Trou	1
Vehicle Burglar	5
Vehicle Theft	1
Vin Inspection	2
<b>Grand Total</b>	<b>85</b>

July-15

Call Types	Count
10D2	1
29A1	1
29B1	1
29B4U	1
4B1A	1
911H	2
ALBU	3
ANCO	1
ASOJ	2
ASSI	1
COPO	3
CRMI	1
DIFI	1
FICA	1
FIDU	1
FIGR	1
FIRE	1
INFO	1
KEPE	1
MOAS	3
PRCH	2
PRFO	1
REDR	6
RUNA	1
SAHA	1
SUCI	2
THSU	1
TRAC	1
TRES	1
TRHA	2
TRST	15
VIIN	1
VIOR	1
WECH	1
<b>Grand Total</b>	<b>64</b>

Aug-15

Call Types	Count
10C1	1
28C11L	2
29A1	1
29B3U	1
29B4U	1
31D2	1
911C	1
911M	1
ALBU	2
ANCO	2
ASFD	1
ASSA	1
ASSI	1
CRAN	1
CRMI	2
DUI	2
EXPA	2
HARA	3
MATA	1
MOAS	1
OUPE	1
PRCH	3
PRDA	1
REDR	5
REPO	1
RUNA	1
SAHA	2
SORC	1
SUCI	3
SUVE	2
TRAC	9
TRACHR	1
TRHA	3
TRST	19
VIIN	1
<b>Grand Total</b>	<b>81</b>

Sep-15

Call Types	Count
17A1	1
29B1	2
29B4	1
911H	1
ABVE	1
ACMD	1
ALBU	1
ALFI	1
ASOJ	1
ASSI	2
CRAN	1
CRMI	1
DIFA	3
DINO	1
DIST	1
EXPA	1
EXPL	1
INFO	2
KEPE	2
MOAS	1
PRCH	1
PRDA	1
REDR	2
REPO	2
SUCI	1
SUVE	1
TRAC	4
TRACHR	2
TRHA	4
TRST	5
VIIN	2
<b>Grand Total</b>	<b>51</b>

Oct-15

Call Types	Count
12A2	1
23C1I	1
26D1	1
29B4	1
29B4U	1
29O1	1
32B2	1
911U	1
9D2	1
ALBU	3
ALHO	1
ANCO	5
ASSI	2
BRTR	1
CHNE	1
COPO	1
CUIN	2
DIFA	1
DIPA	1
FOPA	1
ILBU	1
INFO	1
KEPE	3
NAGL	1
PRCH	2
REDR	4
THEF	1
TRAC	4
TRHA	4
TRST	10
WECH	1
<b>Grand Total</b>	<b>60</b>

**2015 Year To Date:856**

## Nov-15

Call Types	Count
26C2	1
29B1	1
29B4	1
29O1	2
31D3	2
ALFI	2
BUOJ	1
BURG	1
DIFA	2
EXPA	3
FIST	1
FRAU	1
ILBU	1
INFO	1
KEPE	1
MESS	1
MOAS	2
PRDA	2
REDR	5
SAHA	1
SHFI	1
STPR	1
SUCI	2
SUVE	1
THEFJO	1
THRE	1
TRAC	9
TRCO	1
TRHA	4
TRST	15
VETH	1
VIOR	1
WIPR	1
<b>Grand Total</b>	<b>71</b>

## Dec-15

Call Types	Count
10D2	2
17A1G	2
21B1	1
26C1	1
29B1	2
29B4U	1
31D3	1
32B2	1
ACDA	1
ALBU	1
ALFI	2
ANCO	1
ASSI	3
CHAB	1
COPO	1
CUIN	1
DIFA	1
DIJU	1
EXPA	3
MAWG	1
MOAS	10
POFI	2
POLD	1
PRCH	4
REDR	4
REPO	1
SAHA	1
SUCIIP	1
SUPE	1
SUVEIP	1
THEF	1
THRE	2
TRAC	6
TRHA	7
TRST	4
VIIN	1
WIPR	2
<b>Grand Total</b>	<b>77</b>

## Jan-16

Call Types	Count
17D3	1
1C5	1
29B4	1
29B4U	2
29D2	1
29Z	1
ALBU	1
ALFI	1
ANCO	6
ASSI	1
BURGIP	1
COPO	1
DIFA	1
DINE	1
EXPA	2
MOAS	1
PRCH	8
REDR	4
SUCI	2
THSU	1
TRAC	9
TRCO	1
TRHA	10
TRST	12
VIOR	1
WECH	1
<b>Grand Total</b>	<b>72</b>

## Feb-16

Call Types	Count
17A1	1
23D1	1
25D1	1
29B4U	1
29D2P	1
32D1	1
ACDA	1
ACMD	1
ANCO	2
ASOJ	2
ASSA	1
ASSI	2
CHAB	1
COPO	1
CRMI	1
DIFA	2
EXPA	1
FOUP	1
FRAU	1
INFO	2
KEPE	1
MESS	1
MOAS	4
POFI	1
PRCH	9
PRDA	1
REDR	5
SAHA	2
SUCI	2
TRAC	2
TRACHR	1
TRHA	3
TRST	14
<b>Grand Total</b>	<b>71</b>

## Mar-16

Call Types	Count
Falls, Alpha	1
Overdose	1
Traffic incident	2
medical Alarm	1
Animal Comp.	1
Assist	3
Assist OJ	1
Barking Dog	1
Community Policing	1
Criminal Mischief	1
Dead Animal	2
Extra Patrol	1
Disturbance Family	1
Follow Up	1
Property Found	1
Grass Fire	1
Alarm Hold Up/Panic	1
Disturbance Juvenile	1
Keep The Peace	1
Motorist Assist	2
Premises Check	8
Safety Hazard	1
Suspicious Circumstances	1
Suspicious Person	1
Suspicious Vehicle	1
Threats	1
Traffic Accident PD	4
Traffic Hazard	4
Vin Inspection	1
<b>Grand Total</b>	<b>47</b>

## Apr-16

Call Types
Diabetic Problem
Traffic Incident
Unconscious/Fainting
Cardiac Arrest
Animal Control - Bite
Animal Complaint
Assist
Assist Other Jurisdiction
Alarm Burglary
DUI
Extra Patrol
Disturbance Fight
Follow Up
Fraud
Burning Illegally
Motorist Assist
Natural Gas Leak
Disturbance noise
Violation of Order
Premises check
Private Tow
Reckless Driver
Safety Hazard
Suspicious Vehicle
Telephone Harassment
Theft In Progress
Traffic Accident PD
Traffic Hazard
Traffic Stop
Trespassing in Progress
Vin Inspection
Warrant
Disturbance Weapon
<b>Grand Total</b>



May-16

Count	Call Types	Count
1	Falls-Delta	1
1	Traumatic injury - Bravo	1
1	Abandoned Vehicle	2
1	Animal Control - Bite	1
1	Animal Complaint	3
5	Assist	1
5	Assist Other Jurisdiction	3
1	Alarm Burglary	2
2	Child Neglect in progress	1
1	Community Policing	1
2	Criminal Mischief	1
2	Disturbance	1
1	Extra Patrol	2
1	Disturbance Family	2
1	Grass Fire	1
2	Disturbance Juvenile	1
1	Keep the Peace	2
1	Motorist Assist	2
1	Disturbance neighbor	1
3	Disturbance noise	1
2	Violation of an Order	2
1	Fire - Other	1
1	Out with Pedestrian	1
2	Private Tow	1
1	Reckless Driver	1
1	Suspicious Circumstance	1
3	Suspicious Person In Progr	1
4	Suspicious Vehicle	2
1	Traffic Accident PD	2
1	Traffic Accident Private Pro	1
7	Traffic Hazard	5
1	Trespassing in Progress	1
1	Vin Inspection	1
60	Disturbance Weapon	1
	<b>Grand Total</b>	<b>51</b>

Jun-16

Call Types	Count
ANIMAL COMPLAIN	7
ASSAULT JO	1
ASSIST	2
BARKING DOG	1
BREATHING PROB	1
BURGLARY	1
CHILD ABUSE	1
COMMUNITY POLIC	3
DAMAGE PROPERTY	1
DISTURBANCE	1
EXTRA PATROL	1
KEEP THE PEACE	1
LIQUOR VIOLATIO	1
MOTORIST ASSIST	2
PAPER SERVICE	1
PREMISES CHECK	1
SUSP CIRCUMSTAN	1
SUSP VEHICLE	1
TRAFFIC ACC	6
TRAFFIC ACC PI	4
TRAFFIC HAZARD	8
VIN INSPECTION	4
WARRANT	3
<b>TOTAL</b>	<b>53</b>

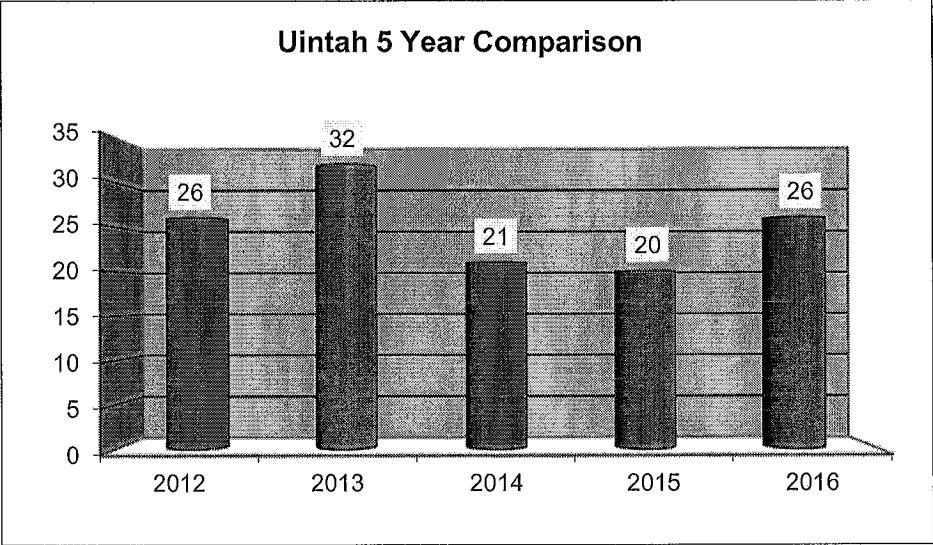
Jul-16

Call Types	Count
911 HANGUP	1
9E CARDIAC ARST	1
ABANDONED VEH	1
ANIMAL COMPLAIN	4
ASSAULT	1
ASSAULT DV	1
ASSIST	2
ASSIST OJ	1
BREATHING PROB	1
COMMUNITY POLIC	1
CRIMINAL MISC	1
EXTRA PATROL	1
FIREWORKS	1
FOLLOW UP	2
FOUND PROPERTY	1
HEMORRHAGE	1
JUVENILE DISTUR	1
L GRASS FIRE	2
MESSAGE POLICE	1
MOTORIST ASSIST	2
ORDINANCE VIOL	1
PEDESTRIAN	1
PREMISES CHECK	1
RECKLESS DRIVER	2
SAFETY HAZARD	2
SEX OFFENSE	2
SUSP PERSON	2
SUSP VEHICLE	2
SUSP VEHICLE IP	1
TRAFFIC ACC	4
TRAFFIC HAZARD	2
UNCONSCIOUS	1
UNKNOWN PROBLEM	2
VEHICLE PURSUIT	1
VEHICLE THEFT	1
VIN INSPECTION	1
WELFARE CHECK	1
<b>Grand Total</b>	<b>54</b>

# UINTAH CITY CITATION 5 YEAR COMPARISON FOR THE MONTH OF JULY 2016

26	32	21	20	26
2012	2013	2014*	2015*	2016*

\* This figure was received from Uintah JP Court and does not include any citations that were issued as warnings.



# UINTAH CITY CRIME CALENDAR 2016



**THEFT** One occurred every 31 days

**BURGLARY** One occurred every 31 days

**ASSAULTS** One occurred every 15.5 days