

Emergency Responses:							
EMS	EMS YTD	FIRE	FIRE YTD	OTHER	OTHER YTD	MO. TOTAL	Year To Date
6	33	3	20	0	0	9	53

	Month	Year to Date
Civilian Fire Fatalities	0	0
Civilian Fire Injuries	0	0
Firefighter Injuries	0	0
Monthly Fire Loss	1	\$35,000
Significant Incidents	1	2

**Figure 1: Fire Department Calls for Service**

Resource: Weber Area Consolidated Dispatch

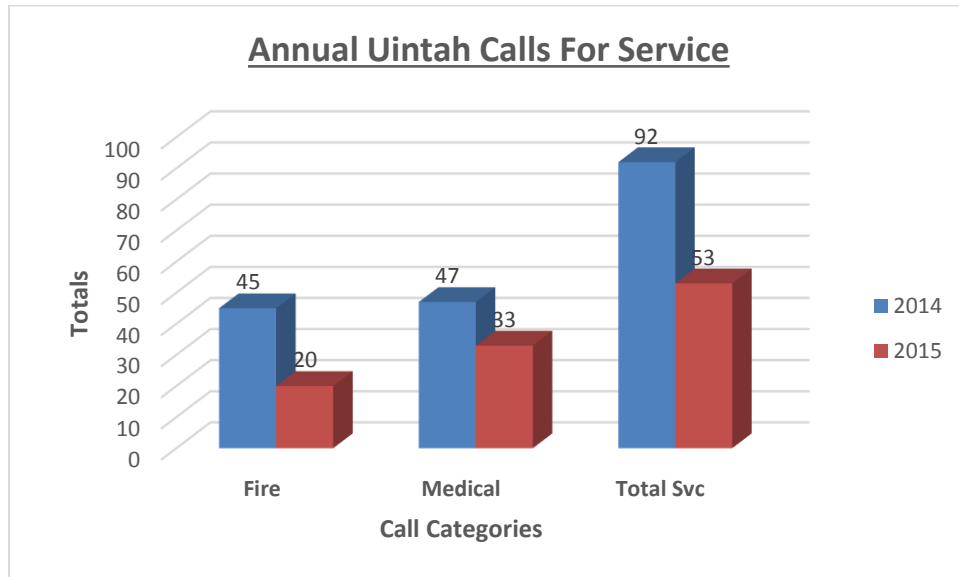
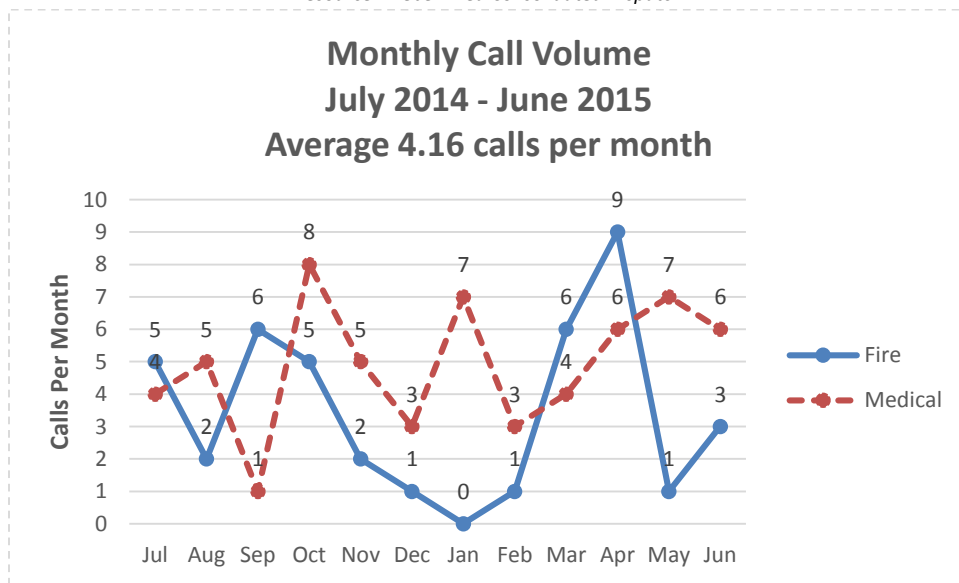


Figure 1 shows the total calls for service for 2014. Please note that 2015 is the call volume for January through June of this calendar year.

**Figure 2: Monthly Call Volume Longitudinal**

Resource: Weber Area Consolidated Dispatch



The trend indicated in Figure 2, shows call volume since July 2014.

**Figure 3: Monthly Medical Call Volume**

Resource: Weber Area Consolidated Dispatch

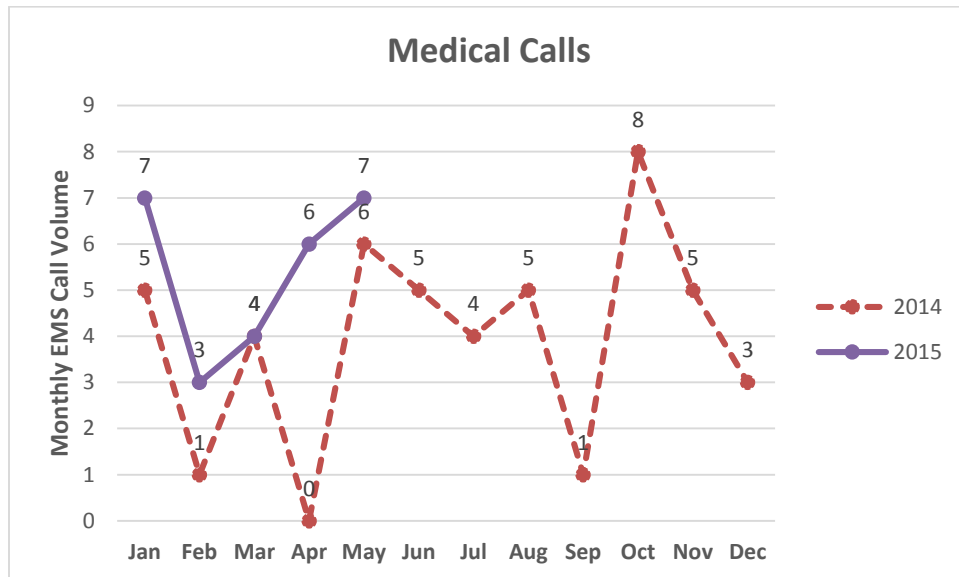


Figure 3: Monthly EMS calls for 2014, and January through June 2015.

**Figure 4: First Responder Medical Call Response**

Resource: Weber Area Consolidated Dispatch

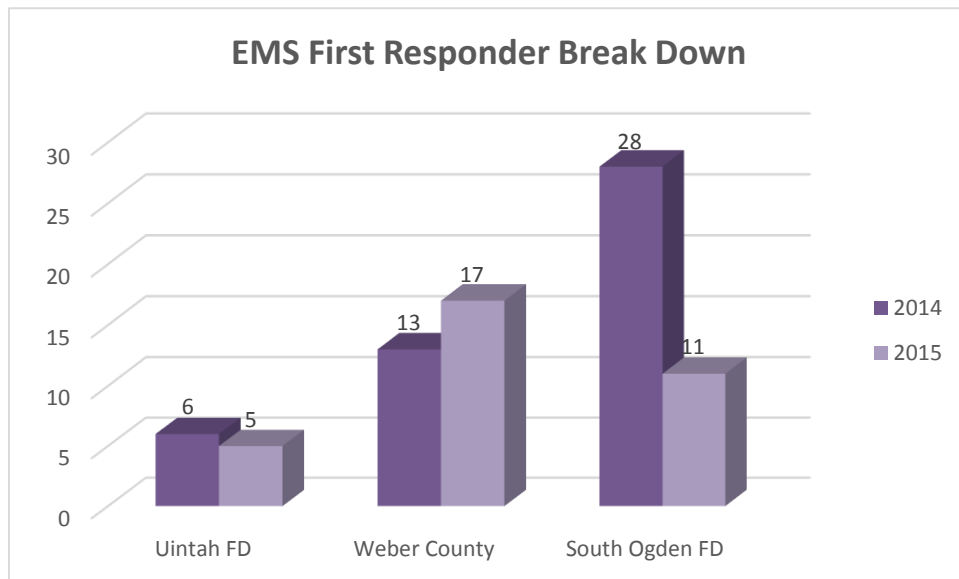


Figure 4 shows the First Responder Call Response, broken down by Primary Responding Agency.<sup>1</sup>

<sup>1</sup> Weber County Fire District is currently contracted to provide this service to Uintah City.

**Figure 5: Monthly Fire Call Trend**

Resource: Weber Area Consolidated Dispatch

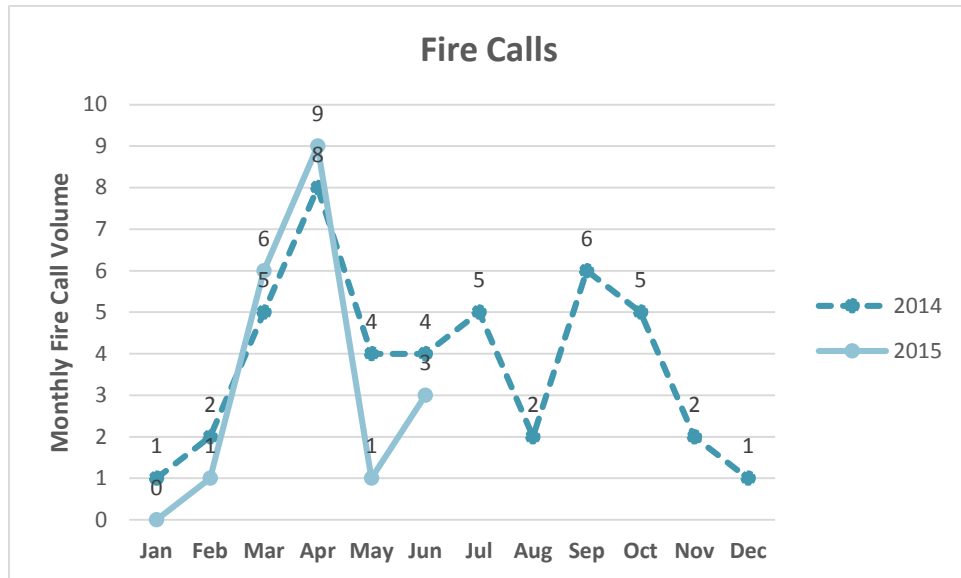
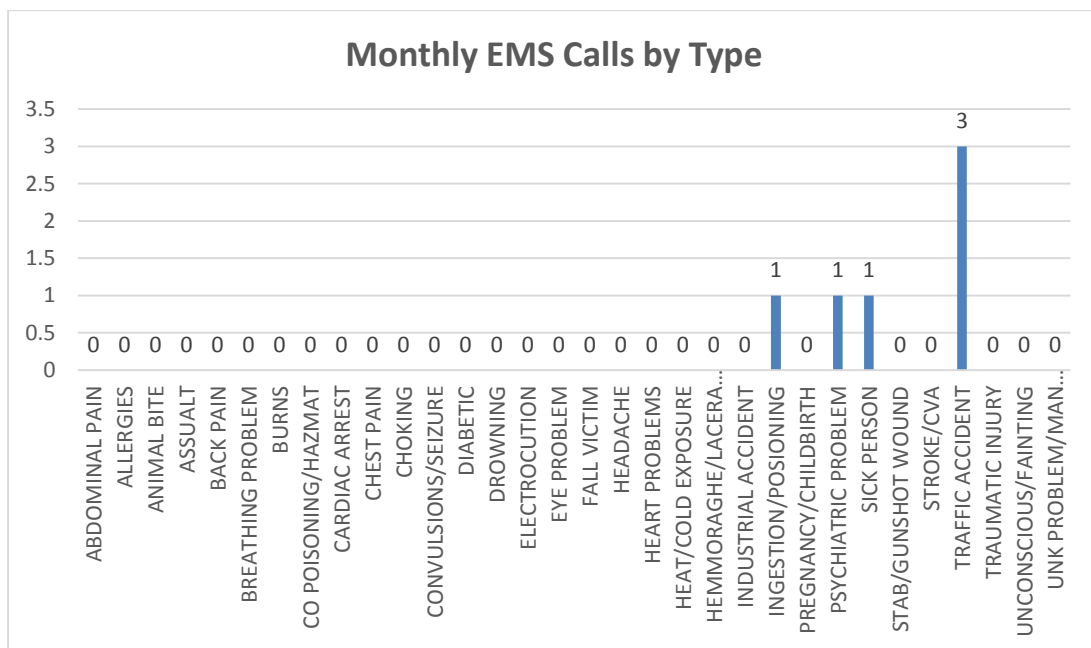


Figure 5: Monthly Fire Calls 2014, and January through June 2015.

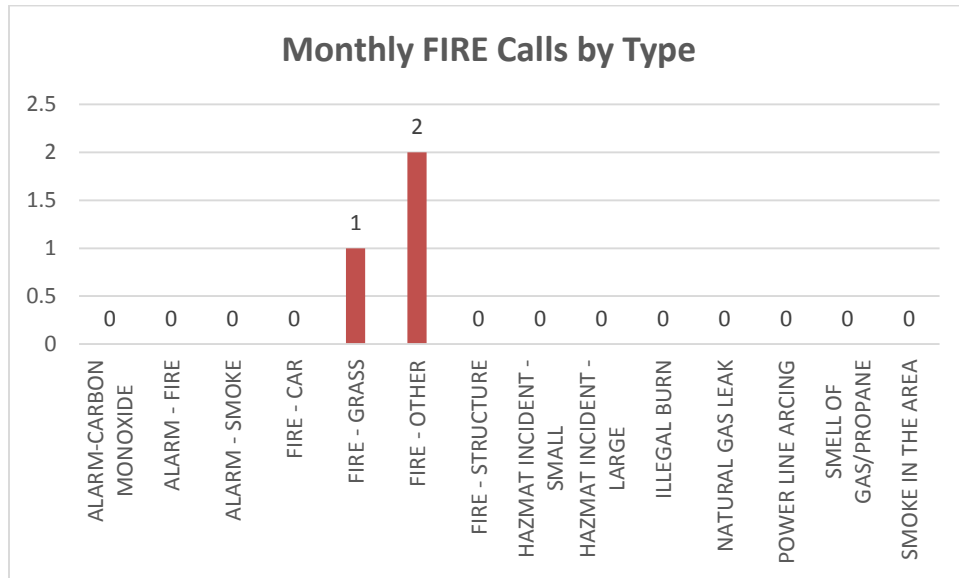
**Figure 6: Monthly EMS Calls by Type**

Resource: Weber Area Consolidated Dispatch



**Figure 7: Monthly FIRE Calls by Type**

Resource: Weber Area Consolidated Dispatch



## TRAINING

The department completed it's regularly schedule training drills.

<i>Training:</i>							
<b>Mandatory Training</b>				<b>Optional Training</b>			
Fire Offered	EMS Offered	Monthly Offered	YTD Offered	Fire Offered	EMS Offered	Monthly Offered	YTD Offered
3	0	3	21	3	10	13	71

During these training offerings the following skills and topics were covered:

- \* Vent, Extinguish, Isolate, Search
- \* Multi System Trauma
- \* County Mock SAR Disaster Exercise
- \* Head/Neck/Spine Trauma
- \* Pediatric Patients
- \* Live Fire Training (Acquired House)
- \* SCBA Training
- \* Heat Illnesses
- \* Ropes/Knots
- \* Company Evolutions (w/ Ogden FD)
- \* OB/GYN Emergencies
- \* Confined Space Tng (w/Riverdale FD)
- \* EMS Case Reviews
- \* Wildland Fireground Evolutions
- \* Initial Rapid Intervention Crews

## PERSONNEL

### Staffing Levels

<i>Operational</i>	Authorized	Staffed	Variance
Chief	1	1	0
Deputy Chief	2	1	1
Fire Marshal	1	1	0
Battalion Chief	1	1	0
Captain	4	2	2
Firefighter	21	11	10
TOTALS	30	17	13
<i>Support</i>	Authorized	Staffed	Variance
Support Volunteer	3	3	0
Support Intern	1	0	1
TOTALS	4	3	1
<i>Wildland</i>	Authorized	Staffed	Variance
Battalion Chief	1	1	0
Engine Boss	4	0	4
Wildland FF - Adv	4	0	4
Wildland FF - Bsc	4	0	4
TOTALS	13	1	12

**Current Vacancies:** Firefighter (11); Wildland Engine Boss (4); Wildland Firefighter Advanced (4); Wildland Firefighter Basic (4).

### Personnel Changes

None.

#### Personnel Change Summary

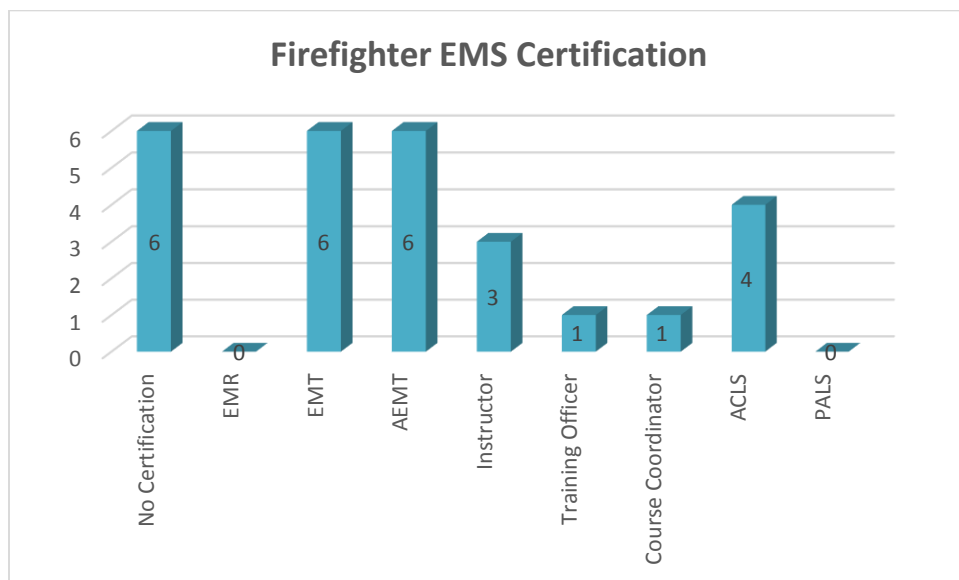
Reduction in Staff	0
Addition to Staff	0
Net Change to Staff	0

## Personnel Certification Firefighter Certification Summary



**Note – Several personnel hold more than one certification, accordingly the number listed in this graphic will not equal department totals.**

## EMS Certification Summary



**Note – Several personnel hold more than one certification, accordingly the number listed in this graphic will not equal department totals.**

## Personnel Attendance

Firefighter	Incidents	Required Training	Optional Training	Total Available
CHF W. Pope	100%	100%	27%	50%
DC M. Marz	0%	100%	27%	38%
BC S. Pagano	0%	33%	0%	6%
CAPT B. Bybee	0%	100%	73%	69%
CAPT C. Bybee	0%	66%	0%	13%
CAPT C. Dixon	50%	100%	0%	25%
FF D. Pearson	50%	100%	0%	25%
FF S. Smith	0%	100%	36%	44%
FF M. Dunham	0%	100%	64%	63%
FF M. Mettler	0%	100%	64%	63%
FF V. Stuart	50%	100%	9%	31%
FF M. Sacco	0%	100%	100%	88%
FF D. Bird	50%	100%	0%	25%
FF B. Turner	0%	66%	9%	19%
FF E. Knowlton	50%	100%	55%	63%
FF K. Smith	0%	100%	0%	19%
FF B. Blakney	50%	100%	0%	25%

## FIRE PREVENTION

Fire Prevention	Monthly Total	Year to Date
Required Inspections	0	32
Voluntary Inspections	0	2
Plans Review	1	7
Vegetation Mgmt Inspection	0	1
Open Burn Permits Issued	0	113
Code Enforcement/Nuisance	0	2
Fire Investigations	1	2
Life Safety Education Presentations	1	4
<i>Number of Participants</i>	50	550



# FISCAL

## Budget Information

### Monthly Budget Review

Monthly Expenditures	\$ 31,335.00
% of Budget Year Remaining	8%
% of Total Budget Remaining	3%

Budget Category	Monthly Expend	Annual Expend	Remaining Budget	Percent Remaining
Salaries/Wages	\$ 1,198.00	\$ 11,019.00	\$ 1,981.00	15%
Employee Benefits	\$ 36.82	\$ 493.86	\$ 506.14	51%
Equipment/Supply/Maint	\$ 1,439.95	\$ 26,027.58	\$ 4,147.42	14%
Professional/Technical	\$ 28,350.12	\$ 18,399.53	\$ (3,399.53)	-23%
Education/Training	\$ 184.18	\$ 3,365.10	\$ (1,265.10)	-60%
Dispatch Fees	\$ -	\$ -	\$ -	0%
Impact Fees	\$ -	\$ 971.62	\$ (11.62)	-1%
Gasoline	\$ 125.93	\$ 891.52	\$ (91.52)	-11%
Grant Expenditures	\$ -	\$ -	\$ -	0%
<b>TOTALS</b>	<b>\$ 31,335.00</b>	<b>\$ 61,168.21</b>	<b>\$ 1,866.79</b>	<b>3%</b>

NOTE: Fiscal Information may be different in actual numbers presented in this report as a result in delays in invoicing/credit statement processing.

*Volunteer Hour Tracking / Monetary Assessment / Savings to City*

<b>Volunteer Hours Tracking:</b>		<i>June</i>	<i>2015</i>
<b>Firefighter</b>	<b>Hours Volunteered</b>	<b>Value of Hours Volunteered</b>	
CHF W. Pope	85	\$	1,881.90
DC M. Marz	52.25	\$	1,156.82
BC S. Pagano	12	\$	265.68
CAPT B. Bybee	43.5	\$	963.09
CAPT C. Bybee	22.1	\$	489.29
CAPT C. Dixon	12	\$	265.68
FF D. Pearson	10.5	\$	232.47
FF S. Smith	36.75	\$	813.65
FF M. Dunham	60	\$	1,328.40
FF M. Mettler	60	\$	1,328.40
FF V. Stuart	12	\$	265.68
FF M. Sacco	150	\$	3,321.00
FF D. Bird	15.75	\$	348.71
FF B. Turner	12	\$	265.68
FF E. Knowlton	60	\$	1,328.40
FF K. Smith	12	\$	265.68
FF B. Blakney	31	\$	686.34
PIO K Stuart	84.25	\$	1,865.30
D Bacon	12.4	\$	274.54
C. Durga	0	\$	-
	<b>783.5</b>	<b>\$</b>	<b>17,346.69</b>
<i>Amount Paid Wages/Benefits</i>		\$	1,723.00
<b>TOTAL SAVINGS TO CITY</b>		<b>\$</b>	<b>15,623.69</b>

- Value of Volunteer Hours is based of Utah FFSL Division for Firefighter Activities rate, currently set at \$22.14 per hour

## APPARATUS STATUS

Designator	Utilization	Status
Engine 91	First Due Engine	In Service
Brush 91	Light Brush Truck	In Service
Brush 92	Heavy Brush Truck	In Service
Brush 93	Light Brush Truck	In Service

**ENGINE 91**                      **Status:** **IN SERVICE**                      **First Due Engine**  
**1999 Pierce/International – 1000 Gallon Tank / 1250 GPM Pump**

**Recent Issues Addressed**

- Water tank level indicator gauge replaced.
- Pump intake screens replaced

**Immediate Maintenance Issues**

- Pump prime cable needs replacement

**Future Issues / Foreseeable Needs to Address**

- None.

**BRUSH 91**                      **Status:** **IN SERVICE**                      **Light Brush Truck**  
**2003 Ford F-550 – 590 Gallon Tank/ 250 GPM Pump**

**Recent Issues Addressed**

- None

**Immediate Maintenance Issues**

- None.

**Future Issues / Foreseeable Needs to Address**

- None.

**BRUSH 92****Status: IN SERVICE****Heavy Brush Truck / Water Tender****1970 AM General M35A2 – 1000 Gallon Tank / Brush Pump****Recent Issues Addressed**

- None

**Immediate Maintenance Issues**

- None

**Future Issues / Foreseeable Needs to Address**

- The brush pump installed on this heavy brush is inadequate for the movement of the 1000 gallons of water the truck carries. The pump engine is also aging, and will need to be replaced.
- Vehicle requires scene lighting installed for night operations.

**BRUSH 93****Status: IN SERVICE****Light Brush Truck****2000 Ford F-350 – 250 Gallon Tank/ Brush Pump****Recent Issues Addressed**

- None

**Immediate Maintenance Issues**

- Vehicle speedometer is not functioning. Needs to go to Ford Dealership.

**Future Issues / Foreseeable Needs to Address**

- Scene lighting needs to be installed on this truck for night time operations.

**STATUS OF SIGNIFICANT ISSUES DEPARTMENT IS ADDRESSING**

- The department is undergoing hiring process for several positions.
- The department is preparing a Request for Proposal for City Review prior to publishing for the design/build of the fire station remodel/addition.
- The department is working with FFSL and Weber County Fire to finish the Wildland Fire Contract requirements.
- The department will be finishing the Spring EMT Basic Class in July.
- The department has been working with Councilman Johnson for the Establishment of a Uintah Citizen Emergency Response Team.
- The department has been working with Weber County Emergency Planners for Emergency Planning/Hazard Mitigation Plans and FEMA grants.

- The department has submitted for the FEMA Assistance to Firefighter Grant program. The Grant request will be in the amount of \$117,000 with a required matching portion from the city of approximately \$5,850. If successful the grant will allow the department to purchase a total new SCBA system (10 complete units, with spare bottles and masks), and 15 sets of Firefighter PPE (“turn outs”). – **PENDING RESPONSE from FEMA.**

D. **Department Review:** Fire Department

E. **Significant Impacts:** This report is for informational purposes only. If the council has specific questions or concerns that are not addressed in this report please contact Chief Pope at (801) 425-2802 or [wpope@uintahfd.org](mailto:wpope@uintahfd.org).