

City Council
Staff Report

Author: Chief William Pope

Subject: Fire Department March 2016 Report

Type of Item: Informational



Summary Recommendations: This report is for informational purposes as part of the Fire Department's Monthly Report to the City Council.

Description:

- A. **Topic:** Fire Department Monthly Update.
- B. **Background/History:** On July 16, 2013 the Fire Department presented a comprehensive fire service presentation. At that time the Council directed staff to begin providing comprehensive Monthly Reports regarding department operations.
- C. **Analysis:**

OPERATIONS

<i>Emergency Responses:</i>							
EMS	EMS YTD	FIRE	FIRE YTD	OTHER	OTHER YTD	MO. TOTAL	Year To Date
7	19	2	4	0	0	9	23
				Month	Year to Date		
<i>Civilian Fire Fatalities</i>				0	0		
<i>Civilian Fire Injuries</i>				0	0		
<i>Firefighter Injuries</i>				0	0		
<i>Monthly Fire Loss</i>				0	0		
<i>Significant Incidents</i>				0	0		

Figure 1: Fire Department Calls for Service

Resource: Weber Area Consolidated Dispatch

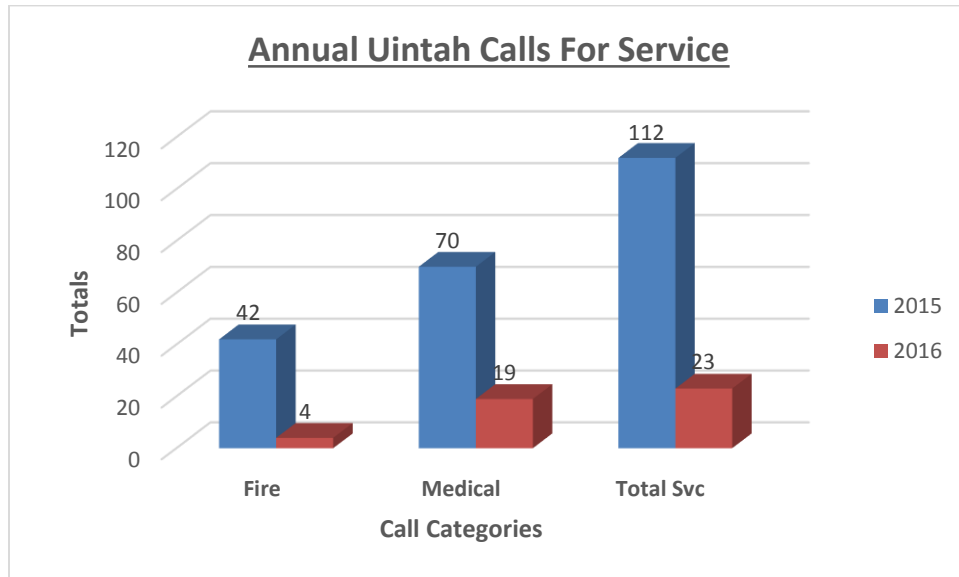
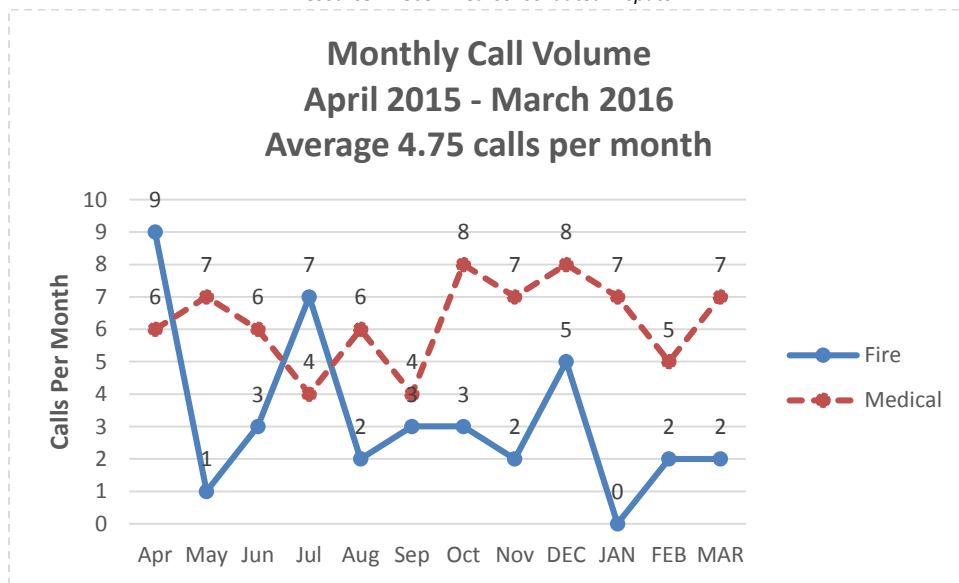


Figure 1 shows the total calls for service for 2015. Please note that 2016 is the call volume for January through March of this calendar year.

Figure 2: Monthly Call Volume Longitudinal

Resource: Weber Area Consolidated Dispatch



The trend indicated in Figure 2, shows call volume since April 2015.

Figure 3: Monthly Medical Call Volume

Resource: Weber Area Consolidated Dispatch

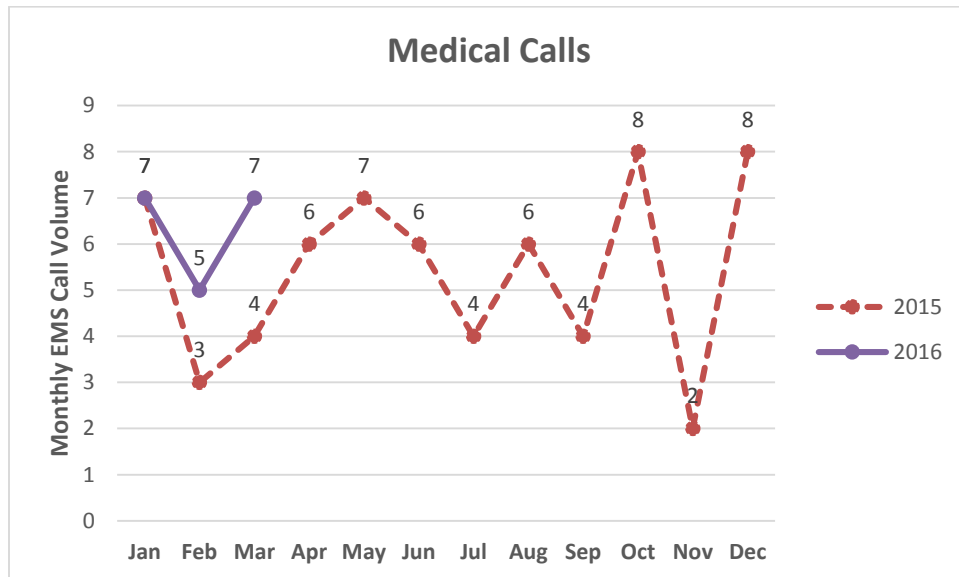


Figure 3: Monthly EMS calls for 2015, and January through March 2016.

Figure 4: First Responder Medical Call Response

Resource: Weber Area Consolidated Dispatch

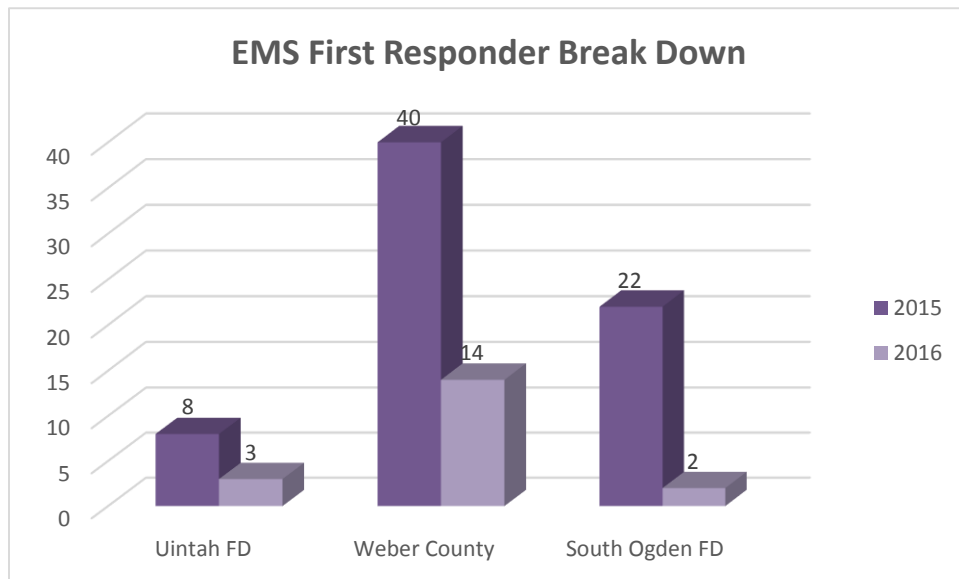


Figure 4 shows the First Responder Call Response, broken down by Primary Responding Agency.¹

¹ Weber County Fire District is currently contracted to provide this service to Uintah City.

Figure 5: Monthly Fire Call Trend

Resource: Weber Area Consolidated Dispatch

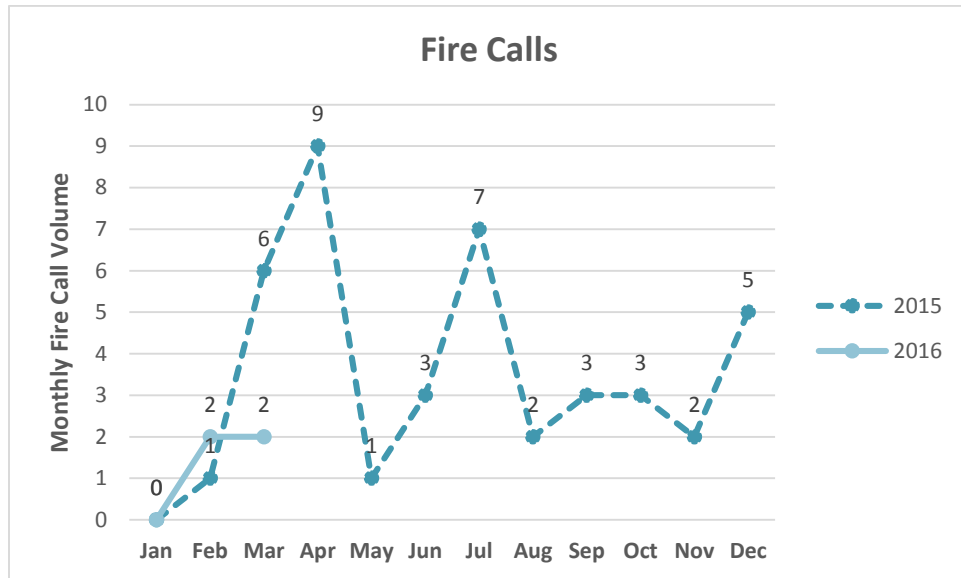


Figure 5: Monthly Fire Calls 2015, and January through March 2016.

Figure 6: Monthly EMS Calls by Type

Resource: Weber Area Consolidated Dispatch

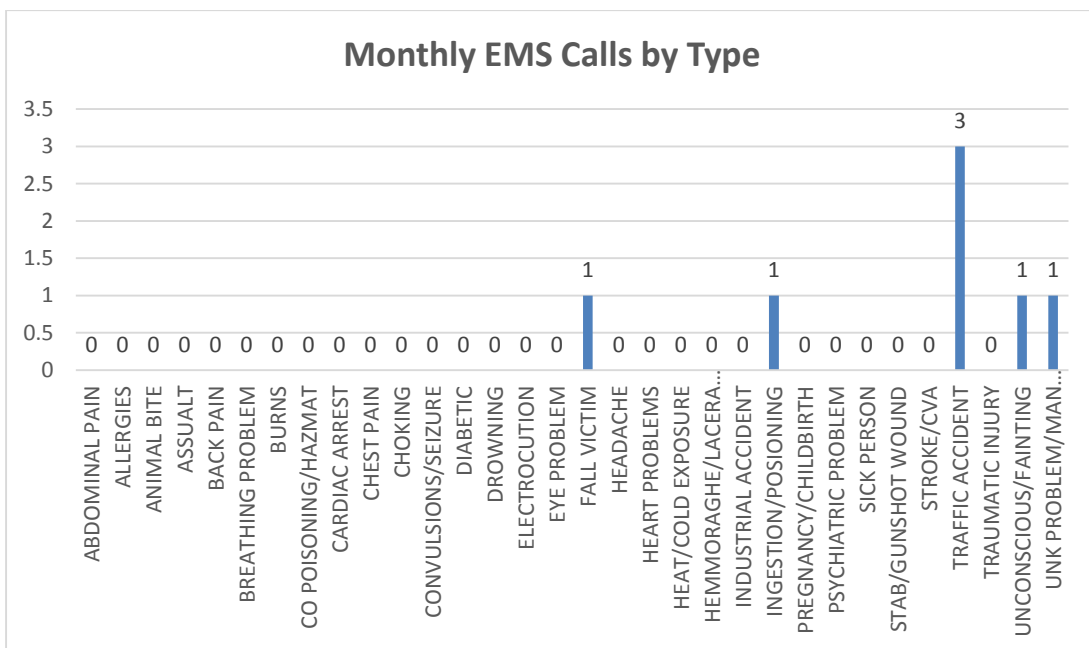
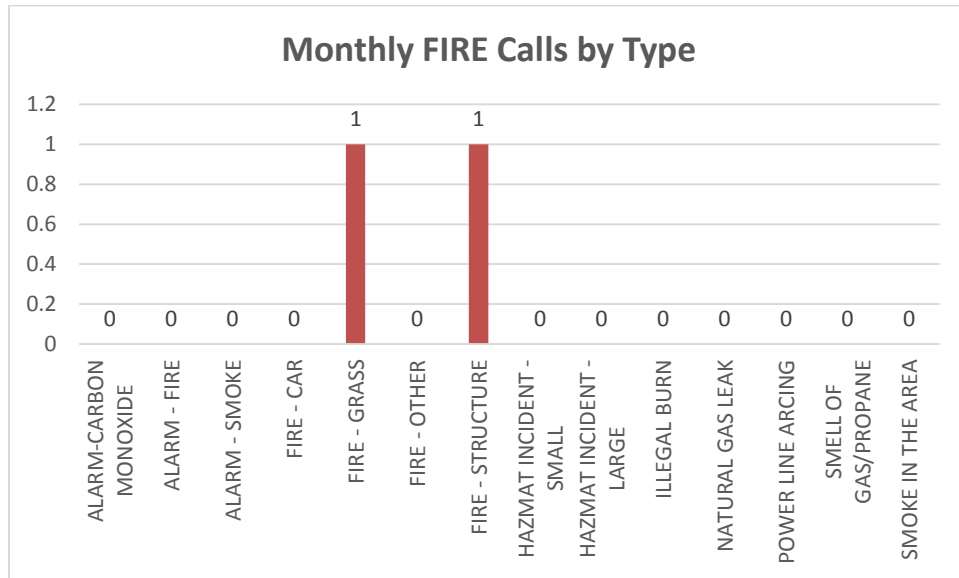


Figure 7: Monthly FIRE Calls by Type
Resource: Weber Area Consolidated Dispatch



TRAINING

The department completed it's regularly schedule training drills.

<i>Training:</i>							
<i>Mandatory Training</i>				<i>Optional Training</i>			
Fire	EMS	Monthly	YTD	Fire	EMS	Monthly	YTD
Offered	Offered	Offered	Offered	Offered	Offered	Offered	Offered
3	0	3	10	4	0	4	59

During these training offerings the following skills and topics were covered:

- * Firefighter I Manipulative Skills
- * Firefighter II Manipulative Skills

PERSONNEL

Staffing Levels

<i>Operational</i>	Authorized	Staffed	Variance
Chief	1	1	0
Deputy Chief	2	2	0
Fire Marshal	1	0	1
Battalion Chief	1	1	0
Captain	4	2	2
Firefighter	20	10	10
TOTALS	29	16	13
<i>Support</i>	Authorized	Staffed	Variance
Support Volunteer	3	3	0
Support Intern	0	0	0
TOTALS	3	3	0
<i>Wildland</i>	Authorized	Staffed	Variance
Battalion Chief	1	0	1
Engine Boss	4	0	4
Wildland FF - Adv	4	0	4
Wildland FF - Bsc	4	0	4
TOTALS	13	0	13

Current Vacancies: Captain (2), Firefighter (10).

Personnel Changes

- 1) Captain Casey Dixon resigned from the department due to work commitments. Left in good standing
- 2) Captain Braden Bybee resigned from the department due to work commitments. Left in good standing
- 3) Firefighter Sarah Smith resigned from the department due to school commitments. Left in good standing.
- 4) Firefighter Jeremiah West resigned from the department due to work commitments. Left in good standing.

Personnel Change Summary

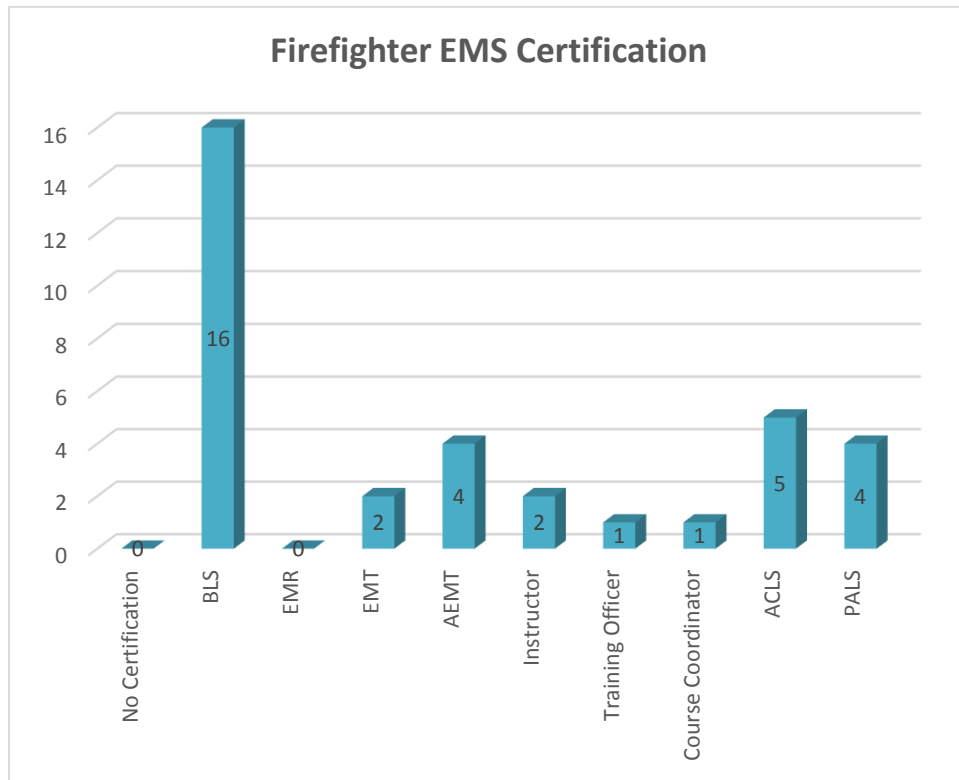
Reduction in Staff	4
Addition to Staff	0
Net Change to Staff	-4

Personnel Certification

Firefighter Certification Summary



EMS Certification Summary



Position Task Book Summary

In 2015 the Department instituted a series of on the Job Training Task books to ensure that all department personnel have meet certain minimum qualifications for each job regardless of state certification. This indicates that there is a basic standard of safe and efficient training in an environment where full-time jobs may hinder rapid completion of Firefighter Certification. The following chart outlines the progress on each level of those task books:

[illegible]

Personnel Attendance

Firefighter	Incidents	Required Training	Optional Training	Total Available
CHF W. Pope	100%	100%	0%	64%
DC M. Marz	50%	100%	0%	45%
DC J. Osgood	75%	100%	100%	91%
BC M. Sacco	25%	100%	0%	36%
CAPT D. Bird	0%	100%	0%	27%
CAPT B. Blakney	0%	100%	100%	64%
FF D. Bacon	25%	100%	100%	73%
FF. M. Dunham	0%	100%	100%	64%
FF K. Firestone	0%	100%	100%	64%
FF T. Hansen	25%	100%	100%	73%
FF C. Kelly	0%	100%	100%	64%
FF E. Knowlton	0%	100%	100%	64%
FF M. Mettler	0%	100%	100%	64%
FF D. Pearson	50%	100%	100%	82%
FF K. Smith	25%	100%	100%	73%
FF G. Virgen	25%	100%	100%	73%

FIRE PREVENTION

Fire Prevention	Monthly Total	Year to Date
Required Inspections	0	0
Voluntary Inspections	0	0
Plans Review	0	0
Vegetation Mgmt Inspection	0	0
Open Burn Permits Issued	0	0
Code Enforcement/Nuisance	0	0
Fire Investigations	0	0
Life Safety Education Presentations	0	0
<i>Number of Participants</i>	0	0

FISCAL

Budget Information

Monthly Budget Review

Monthly Expenditures	\$ 12,320.78
% of Budget Year Remaining	33%
% of Total Budget Remaining	14%

Budget Category	Monthly Expend	Annual Expend	Remaining Budget	Percent Remaining
Salaries/Wages	\$ 550.00	\$ 7,791.00	\$ 6,709.00	46%
Employee Benefits	\$ 42.08	\$ 434.29	\$ 565.71	57%
Equipment/Supply/Maint	\$ 10,808.26	\$ 21,342.78	\$ 1,971.22	8%
Telephone	\$ 379.36	\$ 975.06	\$ 1,504.94	61%
Professional/Technical	\$ 238.06	\$ 16,044.42	\$ 1,931.30	11%
Education/Training	\$ -	\$ 3,543.20	\$ (1,443.20)	0%
Dispatch Fees	\$ 134.56	\$ 134.56	\$ 465.44	78%
Impact Fees	\$ -	\$ 1,168.97	\$ (768.97)	-192%
Gasoline	\$ 108.46	\$ 531.07	\$ 468.93	47%
Grant Expenditures	\$ 60.00	\$ 6,632.11	\$ (1,632.11)	0%
TOTALS	\$ 12,320.78	\$ 58,597.46	\$ 9,772.26	14%

Volunteer Hour Tracking / Monetary Assessment / Savings to City

Volunteer Hours Tracking:		March	2016
Firefighter	Hours Volunteered	Value of Hours Volunteered	
CHF W. Pope	181	\$	4,175.67
DC M. Marz	51	\$	1,176.57
DC J. Osgood	110	\$	2,537.70
BC M. Sacco	142	\$	3,275.94
CAPT D. Bird	25.5	\$	588.29
CAPT B. Blakney	64	\$	1,476.48
FF D. Pearson	39.5	\$	911.27
FF M. Mettler	12	\$	276.84
FF M. Dunham	12	\$	276.84
FF T. Hansen	57.5	\$	1,326.53
FF G. Virgen	44.5	\$	1,026.62
FF D. Bacon	96.5	\$	2,226.26
FF K. Smith	12	\$	276.84
FF C. Kelly	36	\$	830.52
FF E. Knowlton	44	\$	1,015.08
FF. K. Firestone	45	\$	1,038.15
K. Stuart	112.5	\$	2,595.38
C. Durga	0	\$	-
		\$	-
		\$	-
		\$	-
		\$	-
	1085	\$	25,030.95
Amount Paid Wages/Benefits		\$	550.00
TOTAL SAVINGS TO CITY		\$	24,480.95

- Value of Volunteer Hours is based of Utah FFSL Division for Firefighter Activities rate, currently set at \$23.07 per hour

WATER UTILIZATION

	Monthly Water Utilization	Annual Water Utilization
<i>Training Use</i>	0	0
<i>Fire Response</i>	0	0
<i>HAZMAT Response</i>	0	0
TOTALS	0	0

APPARATUS STATUS

Designator	Utilization	Status
Engine 91	First Due Engine	In Service
Brush 91	Light Brush Truck	In Service
Brush 92	Heavy Brush Truck	Out of Service
Brush 93	Light Brush Truck	In Service

ENGINE 91 **Status: IN SERVICE** **First Due Engine**
1999 Pierce/International – 1000 Gallon Tank / 1250 GPM Pump

Recent Issues Addressed

- None

Immediate Maintenance Issues

- None

Future Issues / Foreseeable Needs to Address

- Air Dryer Filter Needs Replacement
- Primer Leveler Needs Repair/Replacement
- Install appliance holders
- Install Shelves in Compartment 3
- Install Dash and backup camera

BRUSH 91 **Status: IN SERVICE** **Light Brush Truck**
2003 Ford F-550 – 590 Gallon Tank/ 250 GPM Pump

Recent Issues Addressed

- None

Immediate Maintenance Issues

- None.

Future Issues / Foreseeable Needs to Address

- Install flashlight mount/charger
- Install Dash and backup camera

BRUSH 92 **Status: OUT OF SERVICE** **Heavy Brush Truck / Water Tender**
1970 AM General M35A2 – 1000 Gallon Tank / Brush Pump

Recent Issues Addressed

- None

Immediate Maintenance Issues

- None

Future Issues / Foreseeable Needs to Address

- The brush pump installed on this heavy brush is inadequate for the movement of the 1000 gallons of water the truck carries. The pump engine is also aging, and will need to be replaced.
- Vehicle requires scene lighting installed for night operations.

BRUSH 93 **Status: IN SERVICE** **Light Brush Truck**
2000 Ford F-350 – 250 Gallon Tank/ Brush Pump

Recent Issues Addressed

- None

Immediate Maintenance Issues

- Vehicle speedometer is not functioning. Needs to go to Ford Dealership.

Future Issues / Foreseeable Needs to Address

- Scene lighting needs to be installed on this truck for night time operations.
- Install flashlight mount/charger
- Install Dash Camera

SUMMARY OF MEETINGS ATTENDED

Uintah Fire Department Personnel participated in the following meetings:

- Utah State Fire Chief Association
- Weber County Fire Officers Association
- Uintah City Staff Meetings
- City Council Meetings
- City Planning Commission Meeting
- Weber County Operations Fire Sub Committee Meeting
- Weber County Operations Board Meeting
- Weber County Fire Protocol Meeting
- Weber County Special Meeting on Incident Alarm Stacking and Mutual Aid
- Utah State Fire Marshal Association

STATUS OF SIGNIFICANT ISSUES DEPARTMENT IS ADDRESSING

- The department is undergoing hiring process for several positions.
- Fire Department was awarded CDBG in the amount of \$64,252. Funding expected August 2016.
- Awaiting on FEMA – AFG Grant Award.
- Department completed Firefighter I and Firefighter II training. Will begin Hazardous Materials Operations/Awareness training in April.

D. **Department Review:** Fire Department

E. **Significant Impacts:** This report is for informational purposes only. If the council has specific questions or concerns that are not addressed in this report please contact Chief Pope at (801) 425-2802 or wpope@uintahfd.org.