

Wildfire Quilt Project

Class Supply List

Reeze L. Hanson, Instructor

Samples feature Artisan Spirit Shimmer Collection from Northcott

Die Cut Tumbler Quilt in 2 sizes with “Ziggy sides”

- 4” tumbler : 58” x 72”
- 3” tumbler: 41” x 54”

Class Supplies:

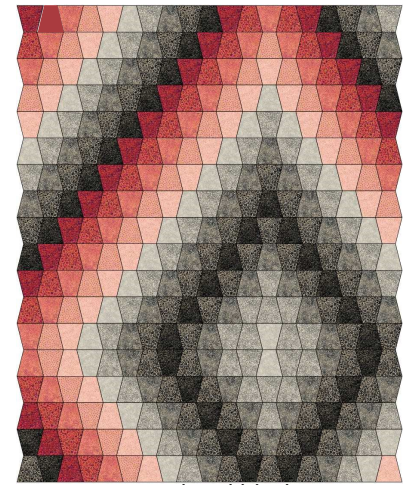
- Wildfire Pattern, MGD 303, \$10 (provided in class)
- 3” or 4” (finished size) AccuQuilt Tumbler die, and die cutting machine. (Teacher will bring 3 cutting machines and 2 dies in each size). You are invited to bring additional die cutting machines & dies if you have them.
- Sewing machine and basic sewing supplies
- **Fabric:** 2 color groups with 5 fabrics in each group, going from light to dark. Total of 10 fabrics.
 - 4” tumblers, cut strips 5” x WOF
 - 3” tumblers, cut strips 11” x WOF

The color group you choose for the center of the quilt (i.e. Black) requires more fabric than the color group chosen for the corners (i.e. Red).

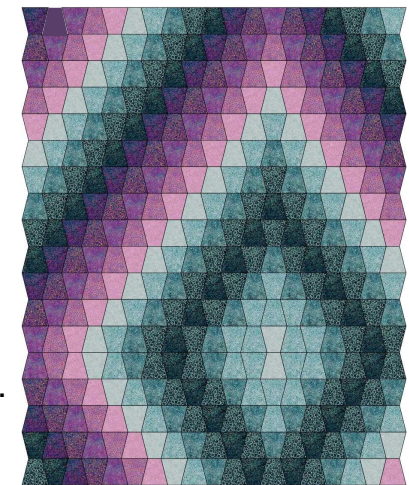
PLEASE PRE-CUT YOUR STRIPS PRIOR TO CLASS.

*If you have your own acrylic tumbler template you would like to use, calculate your yardage by using the # tumblers needed (below). Figure the height of the template to determine the strip size. Find the number of shapes which can be cut per strip by measuring the width of the template thru the center, and dividing 42” by the template width. For example:
5” template = 5” strip center width = 4” $42”/4” = 10.5$ 10 tumblers per strip*

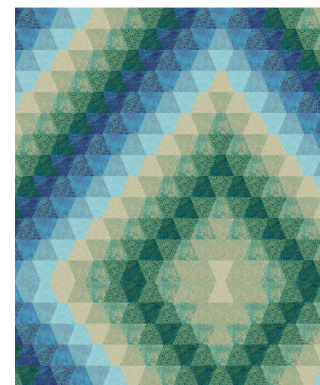
Color	SKU Shimmer	Yardage	# Strips 4”	# Strips 3”	# Tumblers needed
Dark Red	22991M-26	1/2 yard	3	1	20
Red	22992M-26	1/2 Yard	3	1	24
Medium Red	22993M-26	5/8 yard	4	2	27
Pink	22994M-26	5/8 yard	4	2	27
Pale Pink	22995M-26	5/8 yard	4	2	28
Dark Black	22991M-98	3/4 yard	5	2	37
Black	22992M-98	1 yard	6	2	54
Medium Black	22993M-98	1 yard	6	2	47
Gray	22994M-98	1 yard	6	2	47
Light Gray	22995M-98	5/8 yard	4	2	31



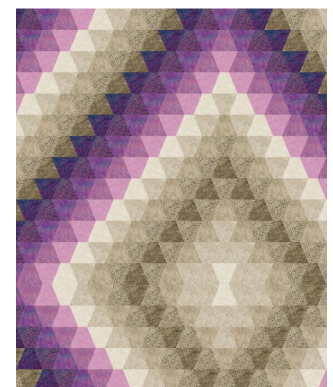
Red and black



Purple and Teal



Blue and Green



Purple and Sand