



Arboretum

by **Lynn**
HUTCHESON

DESIGNER
PATTERN

Pattern available for purchase
from www.morningglorydesigns.com

Quilt Name: Arboretum Star
Dimensions: 64" x 89"
Designed by Morning Glory Designs

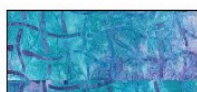
Design by Reeze L. Hanson for
Morning Glory Designs

Fabric by Robert Kaufman, Artisan Batiks,
Arboretum 3

Fabric Requirements

Fabric
key

Corrections:



1-7/8 yards

Blue Criss Cross print
AMD-15489-192



1/4 yard

Pink floral print
AMD-15488-239



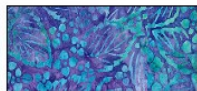
1-1/4 yard

Aqua floral print
AMD-15490-239



1/2 yard

Light blue print
AMD-15486-192



1-3/4 yard

Dark blue floral print
AMD-15490-192



2-1/3 yards

Pink and Blue small floral
AMD-15487-239

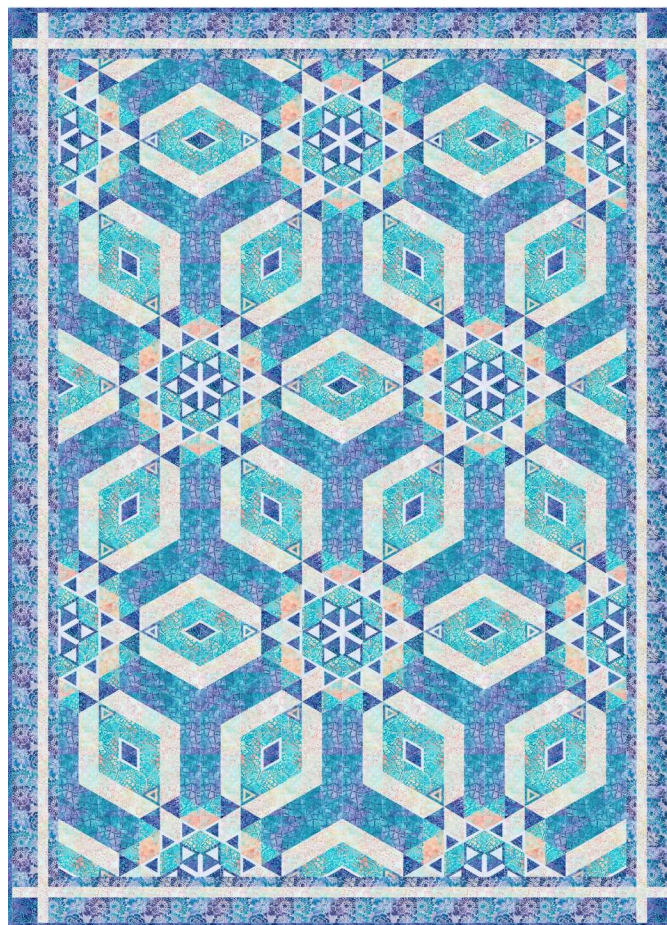


1 yard

Blue large floral print
AMD-15488-192

5-1/2 yards backing fabric

1/2 yard Fusible web



7 58524 37266 9

Cutting Instructions:

For the quilt blocks (quilt center) cut the following templates. Make 36 pieced triangle blocks. (Fig. 1)

Templates A and B can be cut using **From Marti Michell™ 2-1/2" Strippers Templates** for fast and accurate cutting. Use the templates to trim the points.

Templates D, E, F are cut without seam allowance and are fused in place centered on an A triangle. Do not trim points on these patches. These triangles can be cut with any 60° triangle ruler with pointed tips.

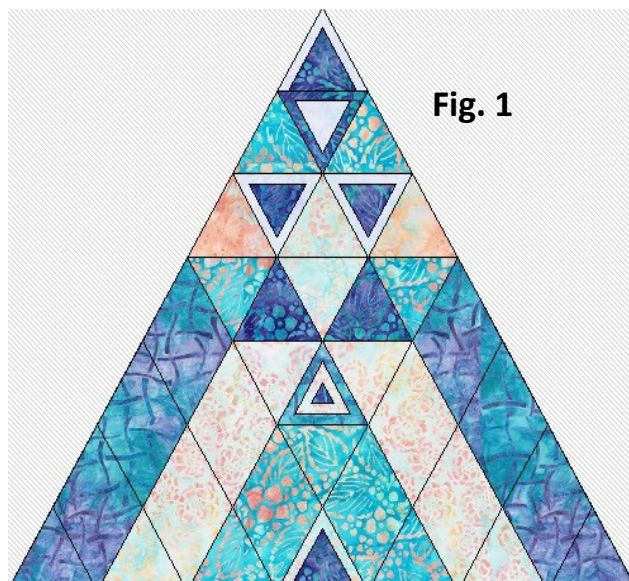







Fig. 1

CORRECTIONS

	A 	B 	D 	E 	F 	Borders
Strip Size to cut	2-1/2"	2-1/2"	1-1/2"	1-1/4"	1/2"	
15489-192 Blue criss-cross	128 Cut 6 strips	240 Cut 20 strips				
15488-239 Pink floral	84 Cut 5 strips					
15490-239 Aqua floral	284 Cut 13 strips	78 Cut 5 strips				
15490-192 Dark blue floral	128 Cut 6 strips		84* Cut 2 strips	84* Cut 2 strips	44* Cut 1 strip	Cut 8 strips 2.25" x WOF For binding
15486-192 Light blue	128 Cut 6 strips			44* Cut 1 strip		
15487-239 Light blue with pink	220 Cut 11 strips	192 Cut 17 strips		44* Cut 1 strip	Cut 8 strips 1.5" x WOF :	1.5" x 60" -cut 2 1.5" x 82.5" -cut 2 1.5" x 3" -cut 8
15488-192 Large blue floral					Cut 8 strips 1.5" x WOF: Cut 8 strips 3" x WOF:	1.5" x 58" - cut 2 1.5" x 80.5" -cut 2 3" x 58" - cut 2 3" x 84.5 -cut 2 3" x 3" -cut 4

*For strips marked with star, cut an equal number of strips of fusible web in the widths shown above. Fuse the web to the back of each fabric strip before cutting out the triangles. A 60° ruler (with pointed ends) works well for cutting these triangles.

1. Iron fusible web onto the back of fabric to be used for the D, E and F templates.
2. Cut out the number of D, E, and F patches indicated in the cutting chart.
3. Place the D patches onto light blue A triangles. Align the bottom edge of both patches. Fuse.