

Window Panes Quilt

Featuring Garden Brighter by Sue Penn

Bright colors, big blocks. Painterly prints from Sue Penn's Garden Brighter collection are dazzling to the eye in this quick-to-stitch quilt.

Collection:	Garden Brighter by Sue Penn
Technique:	Piecing
Skill Level:	Beginner
Finished Size:	66" x 84" (167.64cm x 213.36cm)

All possible care has been taken to assure the accuracy of this pattern. We are not responsible for printing errors or the manner in which individual work varies. Please read the instructions carefully before starting this project. If kitting it is recommended a sample is made to confirm accuracy.

Project designed by Sue Penn

Tech edited by Linda Griepentrog

Fabric Requirements

DESIGN	COLOR	ARTICLE CODE	YARDAGE
(A) Tempest	Jewel	PWSP006.JEWEL	1 yard (0.91m)
(B) Blooms	Azure	PWSP007.AZURE	2 ³ / ₈ yards (2.17m)
(C) Garden	Bright	PWSP008.BRIGHT	1/2 yard (0.46m)
(D) Diamonds	Pool	PWSP009.POOL	1/3 yard (0.30m)
(E) Weave	Apple	PWSP010.APPLE*	1 yard (0.91m)
(F) Weave	Tiffany	PWSP010.TIFFANY	5/8 yard (0.57m)
(G) Pebbles	Blueberry	PWSP011.BLUEBERRY	7/8 yard (0.80m)
(H) Pebbles	Mandarin	PWSP011.MANDARIN	1/3 yard (0.30m)

* includes binding

Backing (Purchased Separately)

44" (111.76cm) wide

Garden Bright PWSP008.BRIGHT 5 1/8 yards (4.69m)

OR

108" (274.32cm) wide

2 1/8 yards (1.94m)

Additional Requirements

- 100% cotton thread
- 74" x 92" (187.96cm x 233.68cm) batting
- Sewing machine
- Rotary cutter/mat/ruler



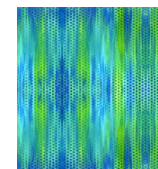
(A)



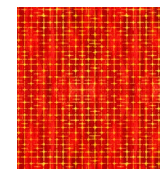
(B)



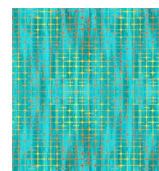
(C)



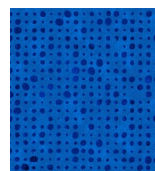
(D)



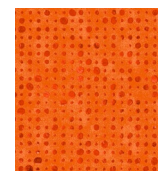
(E)



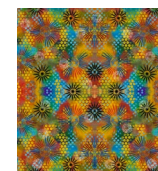
(F)



(G)



(H)



**Backing
44"
(111.76cm)**

Cutting

Fabric A, cut:

(12) $2\frac{1}{2}$ " x WOF (6.35cm x WOF); sub-cut (12) $2\frac{1}{2}$ " x $18\frac{1}{2}$ " (6.35cm x 46.99cm), for bottom sashings, and (12) $2\frac{1}{2}$ " x $16\frac{1}{2}$ " (6.35cm x 41.91cm) for side sashings

Fabric B, cut:

(8) $4\frac{1}{2}$ " x WOF (11.43cm x WOF), for outer borders
(4) $11\frac{1}{2}$ " x WOF (29.21cm x WOF); sub-cut (12) $11\frac{1}{2}$ " (29.21cm) squares

Fabric C, cut:

(8) $1\frac{1}{2}$ " x WOF (3.81cm x WOF); sub-cut (12) $1\frac{1}{2}$ " x $12\frac{1}{2}$ " (3.81cm x 31.75cm) and (12) $1\frac{1}{2}$ " x $11\frac{1}{2}$ " (3.81cm x 29.21cm)

Fabric D, cut:

(2) $4\frac{1}{2}$ " x WOF (11.43cm x WOF); sub-cut (12) $4\frac{1}{2}$ " (11.43cm) squares

Fabric E, cut:

(2) $4\frac{1}{2}$ " x WOF (11.43cm x WOF); sub-cut (12) $4\frac{1}{2}$ " (11.43cm) squares
(8) $2\frac{1}{2}$ " x WOF (6.35cm x WOF), for binding

Fabric F, cut:

(4) $4\frac{1}{2}$ " x WOF (11.43cm x WOF); sub-cut (12) $4\frac{1}{2}$ " x $12\frac{1}{2}$ " (11.43cm x 31.75cm) rectangles

Fabric G, cut:

(2) $4\frac{1}{2}$ " x WOF (11.43cm x WOF); sub-cut (12) $4\frac{1}{2}$ " (11.43cm) squares
(7) $2\frac{1}{2}$ " x WOF (6.35cm x WOF) for inner border

Fabric H, cut:

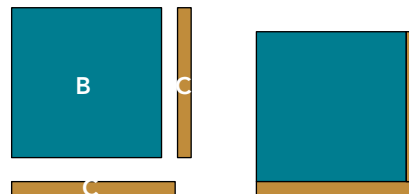
(2) $4\frac{1}{2}$ " x WOF (11.43cm x WOF); sub-cut (12) $4\frac{1}{2}$ " (11.43cm) squares

Sewing

All seams allowances are $\frac{1}{4}$ " (.64cm) and pieces are sewn right sides together.

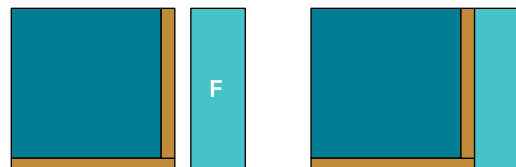
1. Sew (1) $1\frac{1}{2}$ " x $11\frac{1}{2}$ " (3.81cm x 29.21cm) **Fabric C** strip to the right side of each **Fabric B** square. Sew (1) $1\frac{1}{2}$ " x $12\frac{1}{2}$ " (3.81cm x 31.75cm) **Fabric C** strip to the bottom of the unit (**Fig. 1**).

Fig. 1



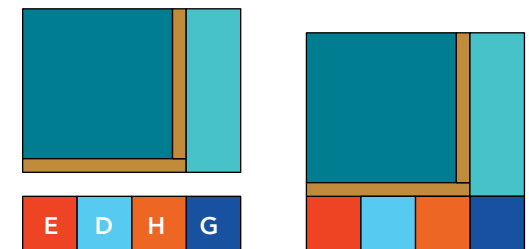
2. Sew (1) $4\frac{1}{2}$ " x $12\frac{1}{2}$ " (11.43cm x 31.75cm) **Fabric F** strip to the right side of each Step 1 unit (**Fig. 2**).

Fig. 2



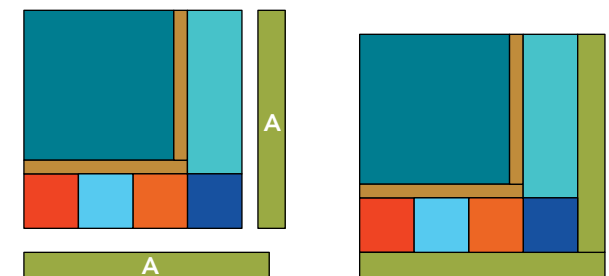
3. Arrange (1) $4\frac{1}{2}$ " (11.43cm) **Fabric E, D, H, and G** square in a single row. Sew the squares together to form a row. Make (12) identical rows. Sew (1) row to the bottom of each Step 2 unit (**Fig. 3**).

Fig. 3



4. Sew (1) $2\frac{1}{2}$ " x $16\frac{1}{2}$ " (6.35cm x 41.91cm) **Fabric A** side sashing to the right side of each unit. Sew (1) $2\frac{1}{2}$ " x $18\frac{1}{2}$ " (6.35cm x 46.99cm) **Fabric A** bottom sashing to the bottom of each unit (**Fig. 4**) to complete the blocks.

Fig. 4



Make 12.

Quilt Top Assembly

5. Referring to the **Quilt Layout** on page 5, arrange the blocks in (4) rows of (3) blocks each. Sew together the blocks in each row. Matching adjacent seams, sew together the rows in order.
6. Sew together the $2\frac{1}{2}$ " x WOF (6.35cm x WOF) **Fabric G** inner borders end to end. Cut (2) inner side borders, $2\frac{1}{2}$ " x $72\frac{1}{2}$ " (6.35cm x 184.15cm), and two inner top/bottom borders, $2\frac{1}{2}$ " x $58\frac{1}{2}$ " (6.35cm x 148.59cm).
7. Sew one **Fabric G** inner side border to each side of the quilt top. Sew one top/bottom **Fabric G** border to the top, and the other to the bottom edge of the quilt top.
8. Sew pairs of the $4\frac{1}{2}$ " x WOF (11.43cm x WOF) **Fabric B** outer borders together end to end, making (4) long border strips. Cut (2) outer side borders, $4\frac{1}{2}$ " x $76\frac{1}{2}$ " (11.43cm x 194.31cm), and two outer top/bottom borders, $4\frac{1}{2}$ " x $66\frac{1}{2}$ " (11.43cm x 168.91cm).
11. Leaving an 8" (20.32cm) tail of binding, sew binding to top of quilt through all layers matching all raw edges. Miter corners. Stop approximately 12" (30.48cm) from where you started. Lay both loose ends of binding flat along quilt edge. Where these two loose ends meet, fold them back on themselves and press to form a crease. Using this crease as your stitching line, sew the two open ends of the binding together right sides together. Trim the seam to $\frac{1}{4}$ " (.64cm) and press open. Finish sewing binding to quilt.
12. Turn the binding to the back of the quilt and hand-stitch in place.

Finishing

9. Sew together the (8) $2\frac{1}{2}$ " x WOF (6.35cm x WOF) **Fabric E** binding strips end to end using diagonal seams. Press the seams open. Press the binding strip in half wrong sides together.
10. Layer the backing (wrong side up), batting, and quilt top (right side up). Baste the layers together and quilt as desired. Trim excess batting and backing even with the quilt top after quilting is completed.

Quilt Layout

