



Town Square

Featuring Merton and KlemScott by Morris & Co.

Before the electronic age, life centered around the town square and this quilt is reminiscent of days gone by when people congregated in the town center.

Collection:	Merton and KlemScott by Morris & Co.
Technique:	Piecing
Skill Level:	Experienced Beginner
Crafting Time:	Longer Term*
Finished Size:	60" x 72" (152.40cm x 182.88cm)

*Crafting time based on Experienced Beginner skill level

Project designed by Lucy A. Fazely

Tech edited by Linda Turner Griepentrog

Fabric Requirements

DESIGN	COLOR	ARTICLE CODE	YARDAGE
(A) Marigold	Tan	PWWM006.TANXX	$\frac{5}{8}$ yard (57.15cm)
(B) Chrysanthemum	Aqua	PWWM009.AQUAX	$\frac{5}{8}$ yard (57.15cm)
(C) Chrysanthemum	Red	PWWM009.REDXX	1 $\frac{1}{8}$ yards (1.03m)
(D) Chrysanthemum	Taupe	PWWM009.TAUPE	$\frac{3}{8}$ yard (34.29cm)
(E) Snakehead	Aqua	PWWM010.AQUAX	$\frac{1}{4}$ yard (22.86cm)
(F) Snakehead	Sage	PWWM010.SAGEX	$\frac{1}{2}$ yard (45.72cm)
(G) Willow Boughs	Aqua	PWWM011.AQUAX	$\frac{1}{3}$ yard (30.48cm)
(H) Willow Boughs	Red	PWWM011.REDXX	1 $\frac{1}{4}$ yards (1.14m)*
(I) Chrysanthemum Toile	Cream	PWWM013.CREAM	$\frac{5}{8}$ yard (57.15cm)
(J) Florets	Aqua	PWWM014.AQUAX	$\frac{1}{4}$ yard (22.86cm)
(K) Florets	Red	PWWM014.REDXX	$\frac{1}{4}$ yard (22.86cm)
(L) Florets	Taupe	PWWM014.TAUPE	$\frac{1}{4}$ yard (22.86cm)

* includes binding

Backing (Purchased Separately)

44" (111.76cm)

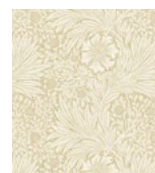
Gilt Trellis Aqua PWWM012.AQUAX 3 $\frac{3}{8}$ yards (3.54m)

OR

108" (274.32cm) 2 yards (1.83m)

Additional Requirements

- Coats Dual Duty XP® All-purpose Thread
- 68" x 80" (172.72cm x 203.20cm) batting
- Sewing machine
- Rotary cutter/mat/ruler
- Basic sewing and pressing supplies



(A)



(B)



(C)



(D)



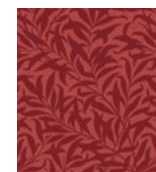
(E)



(F)



(G)



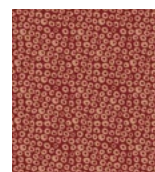
(H)



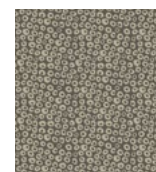
(I)



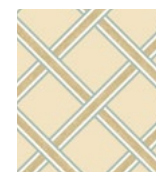
(J)



(K)



(L)



Backing
44"
(111.76cm)

Cutting

WOF = Width of Fabric

Fabric A, cut:

(3) $3\frac{1}{2}$ " (8.89cm) x WOF; sub-cut (28) $3\frac{1}{2}$ " (8.89cm) squares

(3) $2\frac{1}{2}$ " x WOF (6.35cm x WOF); sub-cut (48) $2\frac{1}{2}$ " (6.35cm) squares

Fabrics B and I, cut from each:

(5) $3\frac{1}{2}$ " (8.89cm) x WOF; sub-cut (56) $3\frac{1}{2}$ " (8.89cm) squares

Fabric C, cut:

(7) $5\frac{1}{2}$ " (13.97cm) x WOF, for outer border

Fabric D, cut:

(3) $3\frac{1}{2}$ " (8.89cm) x WOF; sub-cut (28) $3\frac{1}{2}$ " (8.89cm) squares

Fabrics E and K, cut from each:

(2) $2\frac{1}{2}$ " x WOF (6.35cm x WOF); sub-cut (24) $2\frac{1}{2}$ " (6.35cm) squares

Fabric F, cut:

(5) $2\frac{1}{2}$ " x WOF (6.35cm x WOF); sub-cut (72) $2\frac{1}{2}$ " (6.35cm) squares

Fabric G, cut:

(3) $2\frac{1}{2}$ " x WOF (6.35cm x WOF); sub-cut (48) $2\frac{1}{2}$ " (6.35cm) squares

Fabric H, cut:

(7) $2\frac{1}{2}$ " x WOF (6.35cm x WOF), for binding

(6) 2 " x WOF (5.08cm x WOF); sub-cut (112) 2 " (5.08cm) squares

(6) $1\frac{1}{2}$ " x WOF (3.81cm x WOF), for inner border

Fabrics J and L, cut from each:

(3) 2 " x WOF (5.08cm x WOF); sub-cut (56) 2 " (5.08cm) squares

Sewing

All seam allowances are $\frac{1}{4}$ " (.64cm) and pieces are sewn right sides together.

Block Assembly

- Referring to **Figure 1**, lay out the following $3\frac{1}{2}$ " (8.89cm) squares: (2) **Fabric B** and (1) each of **Fabrics A** and **I** in (2) rows. Stitch the squares together in each row, pressing seams in alternate directions for each row. Sew the rows together. Make a total of (28) Block 1.

Fig. 1



Block 1
Make 28

- Referring to **Figure 2**, lay out the following 2 " (5.08cm) squares: (1) each of **Fabrics J** and **L**, and (2) **Fabric H** squares in (2) rows. Stitch the squares together in each row, pressing seams in alternate directions for each row. Sew the rows together. Make a total of (56) four-patch units (**Fig. 2**).

Fig. 2



Unit
Make 56

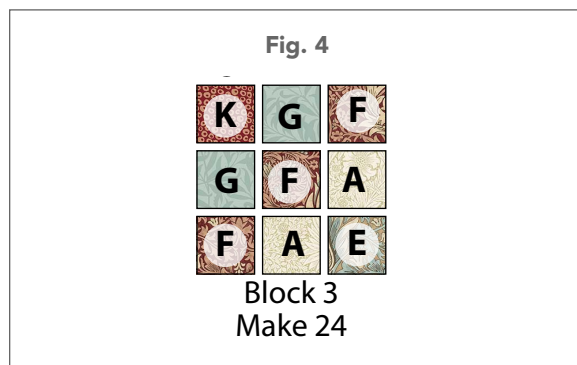
- Referring to **Figure 3**, lay out the following $3\frac{1}{2}$ " (8.89cm) squares: (1) each of **Fabrics D** and **I**, and (2) Step 2 units in (2) rows. Stitch the squares together in each row, pressing seams in alternate directions for each row. Sew the rows together. Make a total of (28) Block 2 (**Fig. 3**).

Fig. 3



Block 2
Make 28

4. Referring to **Figure 4**, lay out the following 2½" (6.35cm) squares: (1) each **Fabrics E** and **K**, (2) each **Fabrics A** and **G**, and (3) **Fabric F** in (3) rows. Stitch the squares together in each row, pressing seams in alternate directions for each row. Sew the rows together. Make a total of (24) Block 3.



Quilt Top Assembly

5. Following the **Quilt Layout** diagram for block placement and orientation, lay out the blocks into (10) rows of (8) blocks each. Sew the blocks together in each row, pressing seams in alternate directions for adjacent rows. Sew the rows together in order and press seams in one direction. The quilt top center should measure 48½" x 60½" (123.19cm x 153.67cm).
6. Sew the (6) 1½" x WOF (3.81cm x WOF) **Fabric H** strips together end to end. Cut (2) 1½" x 60½" (3.81cm x 153.67cm) borders. Sew one border to each side of the quilt center. From the remaining strip, cut (2) 1½" x 50½" (3.81cm x 18.27cm) borders. Sew (1) border to the top and the other to the bottom of the quilt center.

7. Sew (7) 5½" x WOF (13.97cm x WOF) **Fabric C** strips together end to end. Cut (2) 5½" x 62½" (13.97cm x 158.75cm) borders. Sew (1) border to each side of the quilt top. From the remaining strip, cut (2) 5½" x 60½" (13.97cm x 153.67cm) borders. Sew (1) border to the top and the other to the bottom of the quilt top.

Finishing

8. Sew together the (7) 2½" x WOF (6.35cm x WOF) **Fabric H** binding strips end to end using diagonal seams. Press the seams open. Press the binding strip in half wrong sides together.
9. Layer the backing (wrong side up), batting, and quilt top (right side up). Baste the layers together and quilt as desired. Trim excess batting and backing even with the top after quilting is completed.
10. Leaving an 8" (20.32cm) tail of binding, sew binding to top of quilt through all layers matching all raw edges. Miter corners. Stop approximately 12" (30.48cm) from where you started. Lay both loose ends of binding flat along quilt edge. Where these two loose ends meet, fold them back on themselves and press to form a crease. Using this crease as your stitching line, sew the two open ends of the binding together right sides together. Trim seam to ¼" (.64cm) and press open. Finish sewing binding to quilt.
11. Turn the binding to the back of quilt and hand-stitch in place.

Quilt Layout

