

# Vortex

Featuring Gems & Jewels  
Strip Packs

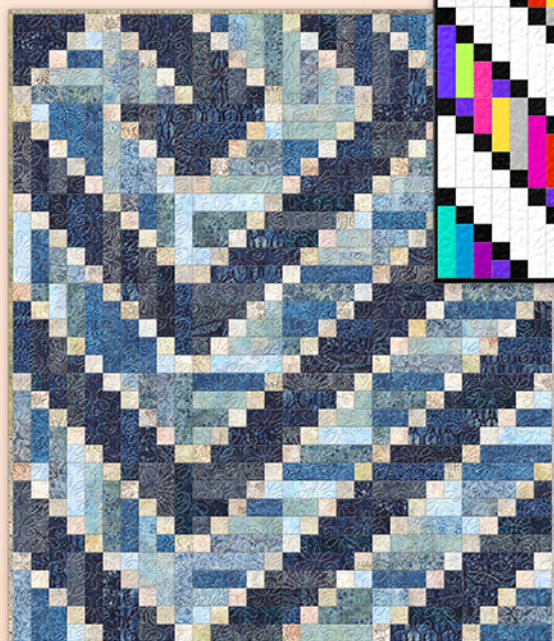
Quilt: 60" x 70"  
Requires 3 Strip Packs,  
Includes Scrappy Binding,  
Backing: 4 yards



1 On the Bright Side  
1 Spring Fling  
1 Midnight



2 Sand Bar & 1 Skinny Jeans



2 Skinny Jeans & 1 Sand Bar



1 On the Bright Side  
1 White Out  
1 Midnight



1 On the Bright Side  
1 Midnight  
1 White Out



Wilmington Prints: A World of Possibilities  
[www.wilmingtonprints.com](http://www.wilmingtonprints.com)



[www.wilmingtonprints.com](http://www.wilmingtonprints.com)



# Vortex

Please read all instructions carefully AND identify all fabrics before beginning.  
All instructions include a 1/4" seam allowance and strips are cut selvege to selvege.

## 1. Cut the following from Essential Gems or Wilmington Jewels Strip Packs:

*Note: If using 3 identical strip packs, separate them into 3 sets (such as red, white, and blue) of 24 strips each.*

### Pack #1 (**Fabric A**):

From each of 21 strips, cut (2) 2-1/2" x 8-1/2" strips, (2) 2-1/2" x 6-1/2" strips, (2) 2-1/2" x 4-1/2" strips, and (1) 2-1/2" square  
From remaining 3 strips, cut a total of (21) 2-1/2" squares

### Pack #2 (**Fabric B**):

From each of 21 strips, cut (2) 2-1/2" x 8-1/2" strips, (2) 2-1/2" x 6-1/2" strips, (2) 2-1/2" x 4-1/2" strips, and (1) 2-1/2" square  
From remaining 3 strips, cut a total of (21) 2-1/2" squares

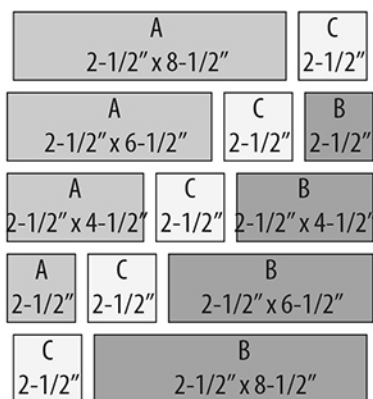
### Pack #3 (**Fabric C**):

Set aside 7 strips for binding  
From remaining 17 strips, cut a total of (210) 2-1/2" squares

*Note: Prints in packs may vary from color quilt image.*

## 2. Piecing Order:

1. Randomly selecting from **Fabrics A, B, and C**, arrange fabric strips and squares as shown. Stitch strips and squares into rows. Sew rows together. Make a total of 42 blocks (10-1/2" square unfinished).



Make 42

2. Refer to Quilt Layout (Page 2), or Alternate Quilt Layout below, for arrangement and placement of blocks.

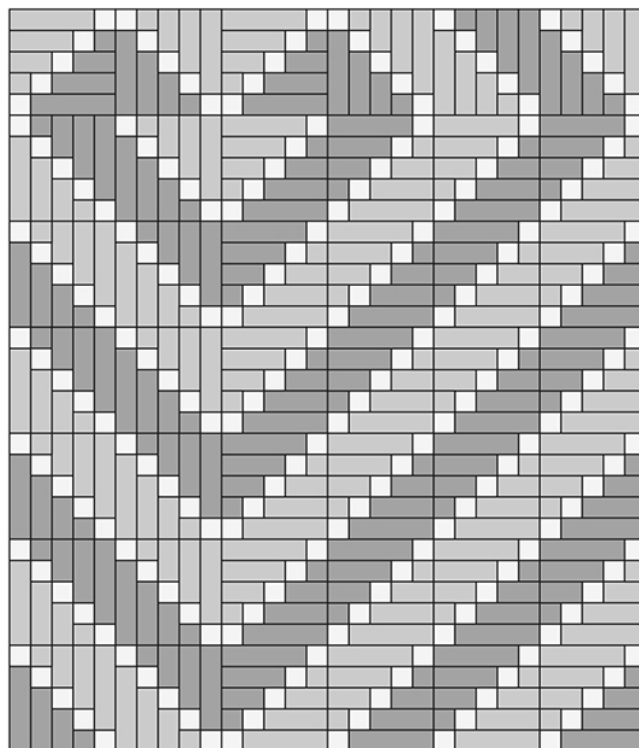
3. Arrange blocks in 7 rows of 6 blocks each. Sew blocks into rows. Sew rows together.

4. The quilt measures approximately 60-1/2" x 70-1/2" (unfinished). Make backing at least 8" larger than the top.

5. Layer and baste top, batting, and backing together. Quilt as desired. Attach scrappy binding made with **Fabric C** strips and enjoy!!

## ALTERNATE QUILT LAYOUT

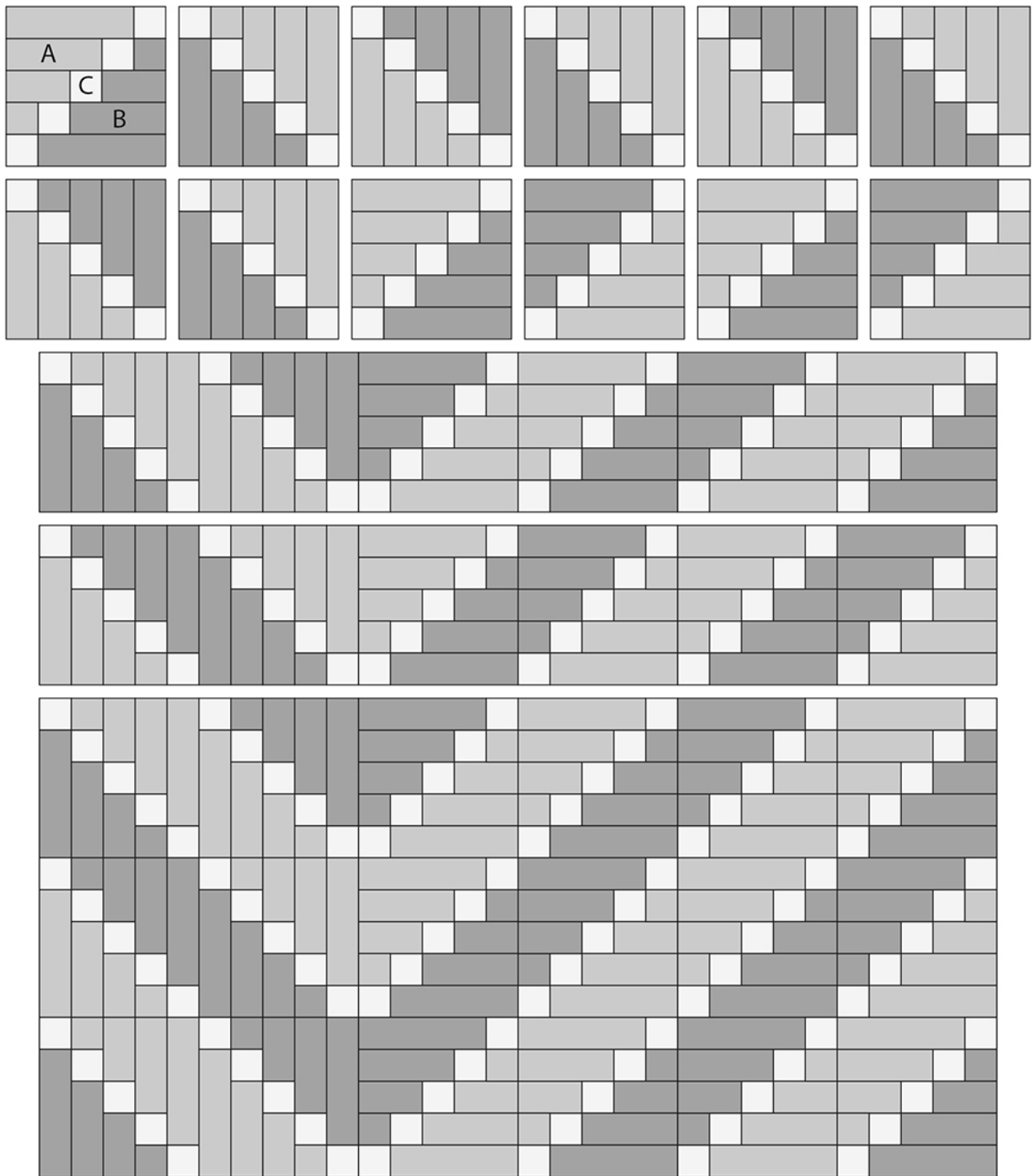
Turn the third block in first row to form a heart.



*Shading of block diagram and Quilt Layout may vary depending on fabrics used.*

# Vortex

## QUILT LAYOUT





# Vortex

Featuring Gems & Jewels  
Strip Packs

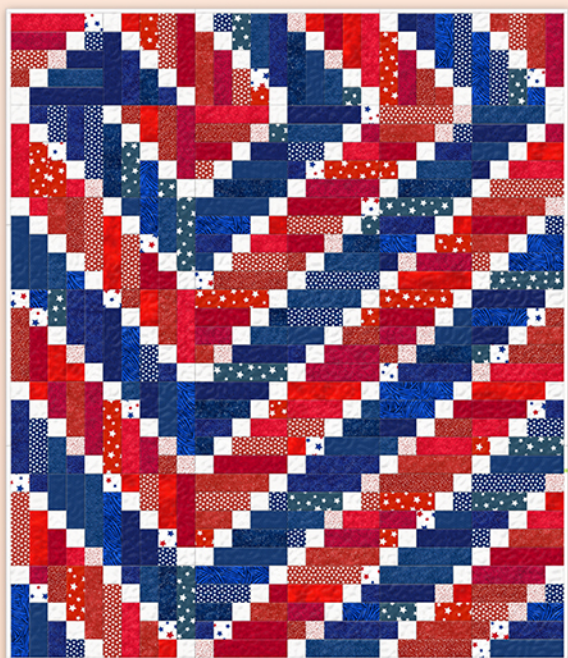
Quilt: 60" x 70"  
Requires 3 Strip Packs,  
Includes Scrappy Binding,  
Backing: 4 yards



1 Falling for You, 1 Vanilla Cream  
& 1 Emerald Forest



1 White Out, 1 Ruby Days  
& 1 Pinking of You



3 Yankee Doodle



1 Ruby Days, 1 Emerald Forest  
& 1 White Out



Wilmington Prints: A World of Possibilities  
[www.wilmingtonprints.com](http://www.wilmingtonprints.com)



[www.wilmingtonprints.com](http://www.wilmingtonprints.com)