

SIMPLISH

Featuring 5 Karat & 10 Karat Mini-Gem or Mini-Jewel Packs, & Wilmington Jewel or Essential Gem Packs

Quilt: 56 1/2" x 70"

Requires:

1 - 5 Karat Mini

1 - 10 Karat Mini

1 - Wilmington Jewels

Essential Gems

Binding: 5/8 yd.

Backing: 3 3/4 yds.



Q504-23-504 Skinny Jeans

Q509-23-509 Skinny Jeans

Q802-4-802 Vanilla Sky

www.WilmingtonPrints.com

Wilmington Prints: A World of Possibilities

SIMPLISH

Please read all instructions carefully AND identify all fabrics before beginning.

All instructions include a 1/4" seam allowance and strips are cut selvage to selvage, unless stated otherwise.

1. Cut the following:

5 Karat Mini Pack

Use (24) 5" squares as is

10 Karat Mini Pack

Cut (36) 5" x 10" pieces

Cut (12) 5" squares

2-1/2" Strip Pack

Select 3 lightest strips and cut into

(3) 2-1/2" x 42" strips

Select the next 6 lightest strips and cut each

into (2) 2-1/2" x 16-1/2" strips and

(1) 2-1/2" x 8" strips

From each of 10 strips, cut (2) 2-1/2" x 16-1/2" strips and (1) 2-1/2" x 5" strips

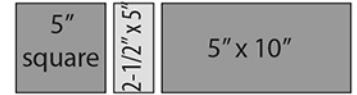
From 5 remaining strips, (26) 2-1/2" x 5" strips

Binding Fabric: Cut (7) 2-1/2" strips

Note: Prints in pre-cut packs may vary from color quilt image.

2. Piecing Order:

1. Fabrics are randomly selected for a scrappy look. Sew a 2-1/2" x 5" strip between a 5" square and 5" x 10" piece. Make a total of 36 blocks (5" x 16-1/2" unfinished).



2. Refer to Quilt Layout (Page 2) for arrangement and placement of blocks, rows, strips, and sashing.

3. Arrange 9 blocks and (8) 2-1/2" x 16-1/2" strips alternately in a horizontal row. Sew into a row (16-1/2" x 57" unfinished). Make a total of 4 rows of blocks.

4. Stitch a 2-1/2" x 42" strip between (2) 2-1/2" x 8" strips. Make a total of 3 sashing strips (2-1/2" x 57" unfinished).

5. Arrange block rows and sashing strips alternately in a vertical row. Sew rows and sashing strips together.

6. The quilt measures approximately 57" x 70-1/2" (unfinished). Make backing approximately 8" larger than the top.

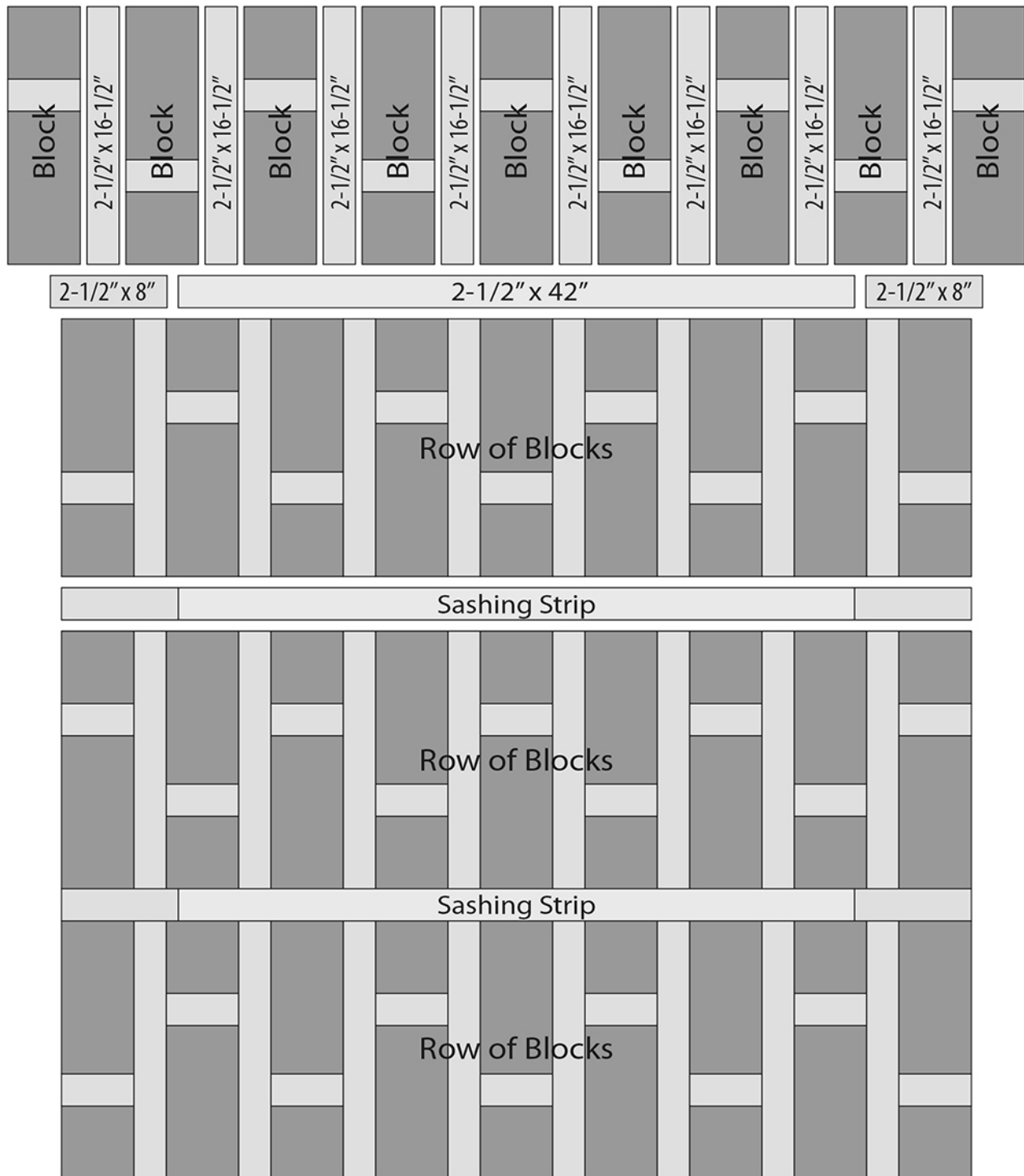
7. Layer and baste top, batting, and backing together. Quilt as desired. Attach binding and enjoy!!

Shading of diagrams may vary depending on fabrics used.

SIMPLISH

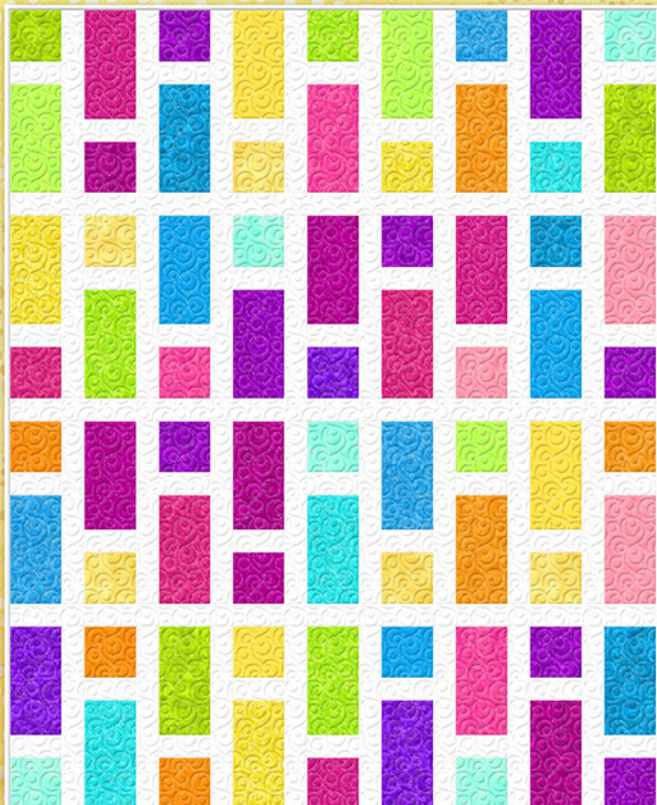
QUILT LAYOUT

Shading of Quilt Layout may vary depending on fabrics used.



SIMPLISH

Featuring 5 Karat & 10 Karat Mini-Gem or Mini-Jewel Packs, & Wilmington Jewel or Essential Gem Packs



Q504-25-504 Colorglow

Q509-25-509 Colorglow

Q802-8-802 Jet Set

Quilt: 56 1/2" x 70"

Requires:

1 - 5 Karat Mini

1 - 10 Karat Mini

1 - Wilmington Jewels
Essential Gems

Binding: 5/8 yd.

Backing: 3 3/4 yds.



Q505-1-505 Boo to You!

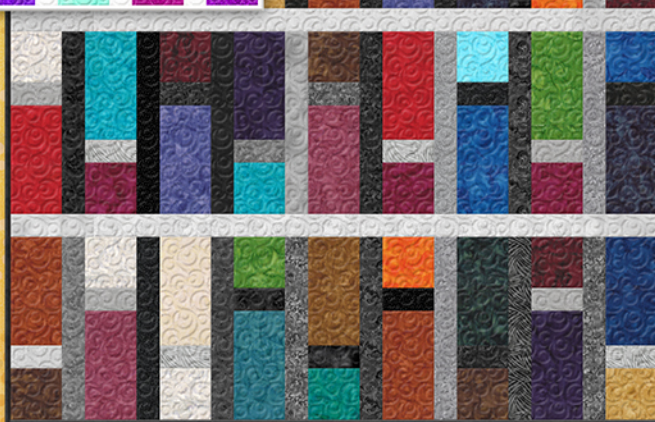
Q510-1-510 Boo to You!

Q802-12-802 White Out

Q505-14-505 Magic Colors

Q510-14-510 Magic Colors

Q802-12-802 White Out



www.WilmingtonPrints.com

Wilmington Prints: A World of Possibilities

