

bloom



Periwinkle Color Story

AMANDA *AM* MURPHY

bloom



Teal Color Story

AMANDA *A* MURPHY

bloom



Plum Color Story

AMANDA *AM* MURPHY

Bloom features my Frolic collection for Contempo of Benartex and measures 76" x 76".

Periwinkle Bloom Materials

Center	1-1/2 yards wideback (13517W-50 Bloom Wide Peri)
Inner Border	1/3 yard (13511-09 Silhouette White)
Flying Geese	1/3 yard of 5 Frolic prints (13510-40 Bouquet Green, 13511-24 Silhouette Aqua, 13511-40 Silhouette Green, 13512-50 Orchard Peri, 13515-66 Circus Lavender)
Flying Geese Background	1-3/4 yards (9636-55 Cotton Shot Indigo)
Corner Accents	1/3 yard (13510-50 Bouquet Peri)
Diamond Accents	1/3 yard (13515-42 Circus Lime)
Middle Border	3/8 yard (13511-50 Silhouette Peri)
Outer Border & Binding	2 yards (13511-40 Silhouette Green)
Backing	5 yards (any Frolic print) or 2-1/2 yards wideback (13517W-50 Bloom Wide Peri)
Other Supplies: 50 wt. Aurifil thread for piecing and high quality batting	

Teal Bloom Materials

Center	1-1/2 yards wideback (13517W-84 Bloom Wide Teal)
Inner Border	1/3 yard (13511-09 Silhouette White)
Flying Geese	1/3 yard of 5 Frolic prints (13511-24 Silhouette Aqua, 13511-40 Silhouette Green, 13512-84 Orchard Teal, 13515-24 Circus Aqua, 13515-66 Circus Lavender)
Flying Geese Background	1-3/4 yards (9636-51 Cotton Shot Peacock)
Corner Accents	1/3 yard (13510-40 Bouquet Green)
Diamond Accents	1/3 yard (13515-42 Circus Lime)
Middle Border	3/8 yard (13511-50 Silhouette Peri)
Outer Border & Binding	2 yards (13511-24 Silhouette Aqua)
Backing	5 yards (any Frolic print) or 2-1/2 yards wideback (13517W-84 Bloom Wide Teal)
Other Supplies: 50 wt. Aurifil thread for piecing and high quality batting	

Plum Bloom Materials

Center	1-1/2 yards wideback (13517W-86 Bloom Wide Plum)
Inner Border	1/3 yard (13511-09 Silhouette White)
Flying Geese	1/3 yard of 5 Frolic prints (13511-20 Silhouette Pink, 13512-26 Orchard Rose, 13513-26 Meadow Rose, 13515-42 Circus Lime, 13515-66 Circus Lavender)
Flying Geese Background	1-3/4 yards (9636-68 Cotton Shot Plum)
Corner Accents	1/3 yard (13510-86 Bouquet Plum)
Diamond Accents	1/3 yard (13511-40 Silhouette Green)
Middle Border	3/8 yard (13514-50 Stepping Stones Peri)
Outer Border & Binding	2 yards (13515-42 Circus Lime)
Backing	5 yards (any Frolic print) or 2-1/2 yards wideback (13517W-86 Bloom Wide Plum)
Other Supplies: 50 wt. Aurifil thread for piecing and high quality batting	

Bloom Direction

Note: All seams are 1/4" and WOF refers to "width of fabric". Press the seams open unless otherwise noted.

Cutting

From the **Center fabric**, cut 1 square 46-1/2" x 46-1/2", centering the design in a pleasing manner. Save the rest of the yardage for another project.

From the **Inner Border fabric**, cut 5 strips 1-1/2" x WOF. Piece into 2 rectangles 1-1/2" x 46-1/2" and 2 rectangles 1-1/2" x 48-1/2".

From EACH of the 5 Flying Geese fabrics cut 1 strip 8-1/2" x WOF. Subcut into 8 rectangles 8-1/2" x 4-1/2".

From the Flying Geese Background fabric, cut 12 strips 4-1/2" x WOF. Subcut into 96 squares 4-1/2" x 4-1/2".

From the Corner Accents fabric cut 1 strip 8-1/2" x WOF. Subcut into 4 squares 8-1/2" x 8-1/2".

From the Diamond Accents fabric cut 1 strip 8-1/2" x WOF. Subcut into 4 squares 8-1/2" x 8-1/2".

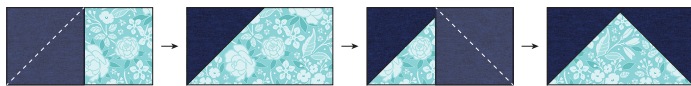
From the **Middle Border fabric**, cut 7 strips 1-1/2" x WOF. Piece into 2 rectangles 1-1/2" x 64-1/2" and 2 rectangles 1-1/2" x 66-1/2".

From the **Outer Border & Binding fabric**, cut 8 strips 5-1/4" x WOF. Piece into 2 rectangles 5-1/4" x 66-1/2" and 2 rectangles 5-1/4" x 76". Cut 9 strips 2-1/4" x WOF and set aside for the binding.

Flying Geese (Make 8 of each color)

Draw a diagonal line on the WRONG side of all of the Flying Geese Background Squares. Set 16 of these squares aside for the Diamond blocks.

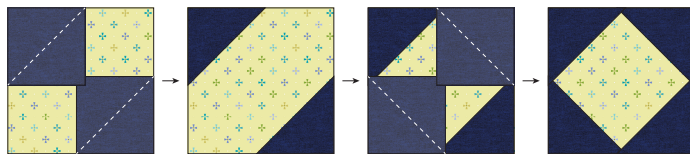
Place one of these squares on the left side of Flying Geese rectangles 4-1/2" x 8-1/2", right sides together and orienting the diagonals as shown. Sew along the drawn line, a hairline more toward the outer corners to allow for fabric thickness. Trim the seams to 1/4" and press open. Place another Flying Geese Background square on the right sides of these units, right sides together and orienting the diagonals as shown. Sew along the drawn line, a hairline more toward the outer corners to allow for fabric thickness. Trim seam to 1/4" and press open.



Save all the corners you cut off in case you would like to use them for the backing as explained later in the directions!

Diamonds (Make 4)

Place Flying Geese Background squares on the opposite corners of the four Diamond Accent squares 8-1/2" x 8-1/2", right sides together, orienting the diagonal as shown. Sew along the drawn line, a hairline more toward the outer corner to allow for fabric thickness. Trim the seams to 1/4" and press open. Place Flying Geese Background squares on the remaining corners of these units, right sides together, orienting the diagonal as shown. Sew along the drawn line, a hairline more toward the outer corner to allow for fabric thickness. Trim the seams to 1/4" and press open.



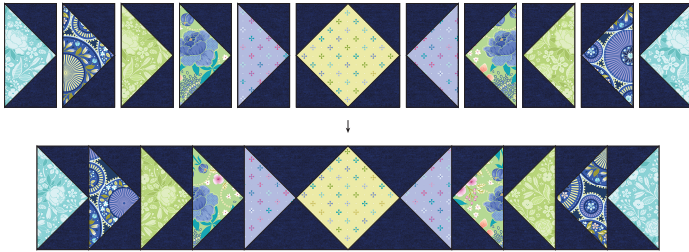
Save all the corners you cut off in case you would like to use them for the backing as explained later in the directions!

Assembly

Join an Inner Border rectangle 1-1/2" x 46-1/2" to both sides of the Center square. Join an Inner Border rectangle 1-1/2" x 48-1/2" to the top and bottom of the Center square.



Arrange 2 Flying Geese of each fabric with the Diamond block to form a row. Join the units. Repeat to make a total of four rows.



Following the Quilt Assembly Diagram below, join two of these rows to the sides of the quilt top, pressing the seams toward the center of the quilt top.

Join a Corner Accent square $8\frac{1}{2}'' \times 8\frac{1}{2}''$ to both ends of two of the Flying Geese rows, pressing the seams toward the squares. Join these to the top and bottom of the quilt top.

Join an Middle Border rectangle $1\frac{1}{2}'' \times 64\frac{1}{2}''$ to both sides of the quilt top. Join an Inner Border rectangle $1\frac{1}{2}'' \times 66\frac{1}{2}''$ to the top and bottom of the quilt top.

Join an Outer Border rectangle $5\frac{1}{4}'' \times 66\frac{1}{2}''$ to both sides of the quilt top. Join an Inner Border rectangle $5\frac{1}{4}'' \times 76''$ to the top and bottom of the quilt top.



Suggested Backing Idea

You can take all of the triangles that you trimmed off when making the Flying Geese and Diamonds and make half-square triangles. Simply sew a seam along their long edges, press open, and trim identically. (I trimmed to 3-1/2" square.) Then sew them into a strip to insert into your backing. An example is shown below.

Finishing

If using regular yardage (not wideback) divide backing fabric into two lengths. Trim the selvage from each. Join their long edges together to make the quilt back. Layer backing, batting, and quilt top. Quilt as desired. Join the 2-1/4" wide binding strips into 1 continuous piece for binding. Press, folding in half lengthwise. Sew binding to quilt.

