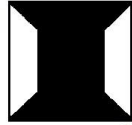
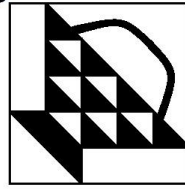


# Mom's Sewing Basket

Sew Easy



Sew  
Fun!



Sew Very Nice

*Sew lovely*

Fabric - Notions - Quilting

*"a home for your creativity"*

1907 Cooper Foster Park Road, Amherst, OH 44001

(440) 984-1444

## T-Shirt Quilts

A unique and personal memento of special times.

Bring us your t-shirts, pick out the fabric to use for the sashing and quilt back, and we do the rest. Tell us what part of the t-shirt you want to use and where each will be on your quilt. First the t-shirt fabric is stabilized and the blocks are cut. Next the blocks and sashing are sewn together to make the top of the quilt. Then we quilt the top and back together with batting in between. The final step is to sew the binding around the edge.

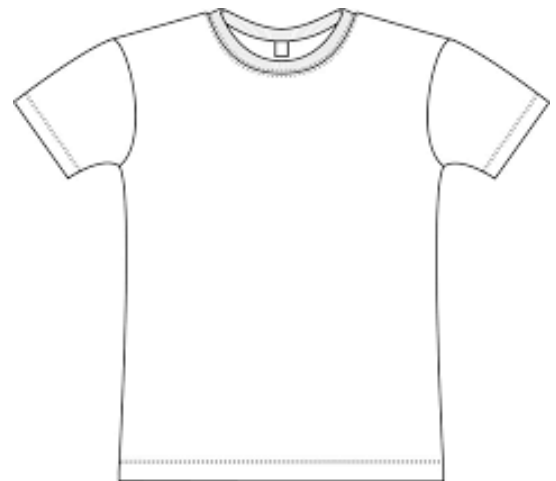
### Pricing:

15 inch block - \$17.50 per shirt without sashing or  
\$18.50 per shirt with sashing

Includes stabilizer, batting and quilting

### Layouts available:

3 x 3 - 9 shirts	\$157.50 or \$166.50 plus fabric
3 x 4 - 12 shirts	\$210.00 or \$222.00 plus fabric
4 x 4 - 16 shirts	\$280.00 or \$296.00 plus fabric
4 x 5 - 20 shirts	\$350.00 or \$370.00 plus fabric
5 x 5 - 25 shirts	\$437.50 or \$462.50 plus fabric



Any custom blocks will be an additional \$15.00 per block.

Plain fabric blocks instead of t-shirt - deduct \$4.00 per block

### 3 x 3 layout

45" x 45" without sashing - requires 2 and 1/2 yards of fabric for backing and binding

57" x 57" with sashing - requires 1 and 1/3 yard of fabric for sashing and 3 and 1/2 yards of fabric for backing and binding.

### 3 x 4 layout

45" x 60" without sashing - requires 3 and 1/8 yards of fabric for backing and binding.

57" x 75" with sashing - requires 1 and 3/4 yards of fabric for sashing and 4 and 1/8 yards of fabric for backing and binding.

### 4 x 4 layout

60" x 60" without sashing - requires 3 and 7/8 yards of fabric for backing and binding.

75" x 75" with sashing - requires 2 and 1/6 yards of fabric for sashing and 5 and 1/8 yard for backing and binding.

### 4 x 5 layout

60" x 75" without sashing - requires 4 and 1/4 yards of fabric for backing and binding.

75" by 93" with sashing - requires 2 and 5/8 yards of fabric for sashing and 6 and 1/4 yards of fabric for backing and binding

### 5 x 5 layout

75" x 75" without sashing - requires 5 and 1/4 yards of fabric for backing and binding.

93" x 93" with sashing - requires 3 and 1/8 yards of fabric for sashing and 7 and 1/4 yards of fabric for backing and binding.