

Dreamland

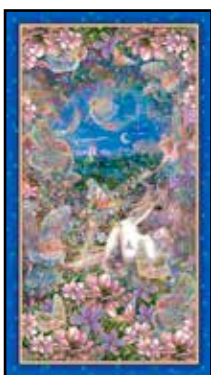


Designed By: Sue Harvey and Sandy Boobar of Pine Tree Country Quilts

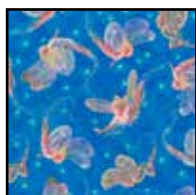
Finished Quilt Size: 41" x 57"

Finished Block Size: 4" x 4"

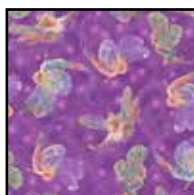
Number of Blocks: 36



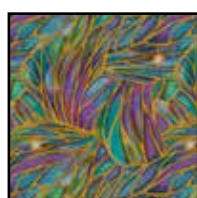
24275 X



24276 B



24276 V



24278 X



24278 XZ



21517 Z



24277 B

FABRIC REQUIREMENTS	
Design:	Yards
24275 X	$\frac{3}{8}$ or 1 repeat
24276 B	$\frac{3}{8}$
24276 V	$\frac{3}{8}$
24278 X (includes binding)	$1\frac{1}{4}$
24278 XZ	$\frac{1}{2}$
21517 Z	$1\frac{1}{4}$
24277 B (backing only)	$3\frac{3}{4}$

Cutting Directions:

WOF = width of fabric from selvage to selvage. Remove as little fabric as possible when squaring strip ends.

24275 X - Dreamland Panel

- Fussy-cut (1) $18\frac{1}{2}$ " x $34\frac{1}{2}$ " rectangle from the panel center.

24276 B - Blue Fairy Print

- Cut (2) $4\frac{1}{2}$ " x **WOF** strips; recut into (18) $4\frac{1}{2}$ " squares.

24276 V - Purple Fairy Print

- Cut (2) $4\frac{1}{2}$ " x **WOF** strips; recut into (18) $4\frac{1}{2}$ " squares.

24278 X - Dark Wing Print

- Cut (1) $7\frac{1}{2}$ " x **WOF** strip; recut into (32) $1\frac{1}{4}$ " x $7\frac{1}{2}$ " strips.
- Cut (1) $2\frac{1}{2}$ " x **WOF** strip; recut into (8) $2\frac{1}{2}$ " x 3" rectangles.
- Cut (5) $1\frac{1}{2}$ " x **WOF** strips for outer border; trim 2 strips to $41\frac{1}{2}$ " lengths.
- Cut (6) $2\frac{1}{4}$ " x **WOF** strips for binding.

24278 XZ - Light Wing Print

- Cut (5) $2\frac{1}{2}$ " x **WOF** strips; recut into (72) $2\frac{1}{2}$ " squares.

21517 Z - White Tonal

- Cut (4) $4\frac{3}{8}$ " x **WOF** strips; recut into (32) $4\frac{3}{8}$ " squares and (8) 2" squares.
- Cut (1) $2\frac{1}{2}$ " x **WOF** strip; recut into (8) $2\frac{1}{2}$ " x 4" rectangles.
- Cut (5) 2" x **WOF** strips for first border; trim 2 strips to $39\frac{1}{2}$ " lengths.
- Cut (3) $1\frac{1}{2}$ " x **WOF** strips; recut into (2) $1\frac{1}{2}$ " x $34\frac{1}{2}$ " strips and (2) $1\frac{1}{2}$ " x $20\frac{1}{2}$ " strips for panel frame.

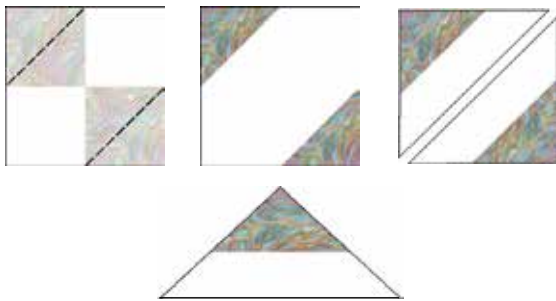
24277 B - Scenic Print (Backing)

- Cut (2) 65" x **WOF** backing pieces.

Stripe Blocks

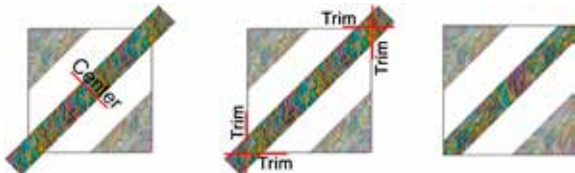
Note: Use a 1/4" seam allowance for all stitching.

1. Draw a diagonal line on the wrong side of each 2½" light wing square and 2" white square. Set aside 8 light wing squares and the white squares for Corner blocks.
2. Place a marked light wing square right sides together on opposite corners of each 4⅜" white square. Stitch on the lines. Trim seam allowances 1/4" from the stitched lines. Press the light wing triangles open. Cut the squares in half on the unpieced diagonal to make 64 pieced triangles.



Pieced Triangle- Make 64

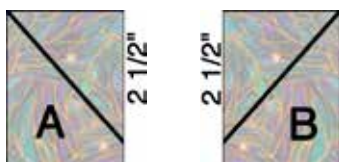
3. Center and sew a pieced triangle to opposite long sides of each 1¼" x 7½" dark wing strip. Press seams toward the strip. Trim the strip ends even with the edges of the pieced triangles to complete (32) 4½" x 4½" Stripe blocks.



**Stripe Block
Make 32**

Center Blocks

1. Make a mark 2½" from the top right corner on the wrong side of a 2½" x 3" dark wing rectangle. Draw a line from the mark to the top left corner to make an A rectangle. Repeat to mark 4 A rectangles. Repeat to mark 4 B rectangles, measuring 2½" from the top left corner and drawing a line to the top right corner.



Mark 4 of each

2. Place a marked A rectangle right sides together on the right end of a 2½" x 4" white rectangle. Stitch on the marked line. Trim seam allowance 1/4" from the stitched line. Press the dark wing rectangle open to complete a 2½" x 4½" angled A unit. Repeat to make 4 angled A units. Repeat to make 4 angled B units, placing the marked B rectangles on the left end of the white rectangles.



Angled A Unit — Make 4

Angled B Unit — Make 4

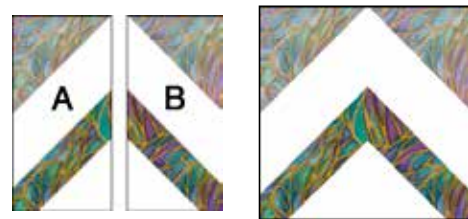
3. Place a marked 2½" light wing square on the white end of each angled unit and a marked 2" white square on the dark wing rectangle end. Stitch on the marked lines. Trim seam allowances 1/4" from the stitched lines. Press the light wing triangles open with seams toward the triangles. Press the white triangles open with seams toward the dark wing pieces to complete 4 each A and B units.



A Unit — Make 4

B Unit — Make 4

4. Sew an A unit to a B unit to complete a 4½" x 4½" Center block, matching the dark wing pieces to form a point. Press seam open. Repeat to make 4 blocks.



Center Block — Make 4

Quilt Assembly

Refer to the exploded quilt diagram as needed throughout the following steps.

1. Sew the $1\frac{1}{2}$ " x $34\frac{1}{2}$ " white strips to the long sides of the panel rectangle. Press seams toward the panel. Stitch the $1\frac{1}{2}$ " x $20\frac{1}{2}$ " white strips to the top and bottom to complete the $20\frac{1}{2}$ " x $36\frac{1}{2}$ " panel center. Press seams toward the panel.
2. Sew a Stripe block to a $4\frac{1}{2}$ " blue fairy square to make a $4\frac{1}{2}$ " x $8\frac{1}{2}$ " blue block unit. Press seam toward the square. Repeat to make 8 blue block units and 8 reverse blue block units. Repeat with the 2 remaining blue fairy squares and 2 Center blocks to make 2 blue center units.



Blue Block Unit
Make 8



Reverse Blue Block Unit
Make 8

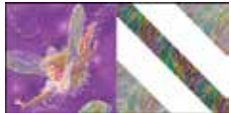


Blue Center Unit
Make 2

3. Repeat step 2 with Stripe blocks and Center blocks and the $4\frac{1}{2}$ " purple fairy squares to make 8 purple block units, 8 reverse purple block units and 2 purple center units.



Purple Block Unit
Make 8



Reverse Purple Block Unit
Make 8



Purple Center Unit
Make 2

4. Join 2 each blue, reverse blue, purple and reverse purple block units with 1 blue center unit to make an $8\frac{1}{2}$ " x $36\frac{1}{2}$ " side strip. Press seams to 1 side. Repeat to make a second side strip. Sew the strips to the long sides of the panel center. Press seams toward the strips.
5. Join 2 each blue, reverse blue, purple and reverse purple block units with 1 purple center unit to make the $8\frac{1}{2}$ " x $36\frac{1}{2}$ " top strip. Press seams to 1 side. Repeat to make the bottom strip. Stitch the strips to the top and bottom of the panel center. Press seams toward the strips.
6. Sew the (3) 2 " x **WOF** white strips short ends together to make a long strip. Press seams to 1 side. Cut into (2) $52\frac{1}{2}$ " strips. Stitch the strips to the long sides of the quilt center and the 2 " x $39\frac{1}{2}$ " white strips to the top and bottom. Press seams toward the strips.

7. Stitch the (3) $1\frac{1}{2}$ " x **WOF** dark wing strips short ends together to make a long strip. Press seams to 1 side. Cut into (2) $55\frac{1}{2}$ " strips. Sew the strips to the long sides of the quilt center and the $1\frac{1}{2}$ " x $41\frac{1}{2}$ " dark wing strips to the top and bottom. Press seams toward the strips to complete the quilt top.
8. Remove the selvage edges from the backing pieces. Join the pieces on the long edges with a $\frac{1}{2}$ " seam allowance. Press seam open. Trim the side edges to make a 49 " x 65 " backing piece.
9. Layer the top with the backing and a 49 " x 65 " batting piece. Quilt as desired. Trim edges even with the top.
10. Prepare dark wing binding and bind edges using your favorite method to complete the quilt.



Exploded Quilt Diagram