

Pirate's Lure

designed by Wendy Sheppard
featuring Treasure Hunt by Marcia Derse
SIZE: 52" x 62"

FREE
PROJECT



THIS IS A DIGITAL REPRESENTATION OF THE QUILT TOP, FABRIC MAY VARY.

PLEASE NOTE: BEFORE MAKING YOUR PROJECT, CHECK FOR ANY PATTERN UPDATES AT WINDHAMFABRICS.COM'S FREE PROJECTS SECTION.




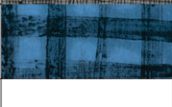


Pirate's Lure

KEY	FABRIC	SKU	YD	CUTTING INSTRUCTIONS
A		43189-14	1/8	For D Block: (1) 2" x WOF. Subcut (4) 2" x 4 1/2" rectangles.
B		43190-19	1/4	For C Block: (2) 2 1/2" x WOF. Subcut (6) 2 1/2" x 7 1/2" rectangles.
C		43184P-X	1	For Quilt Center: (1) 30 1/2" x 40 1/2" rectangle
D		43186-3	1/8	For A Block: (2) 1 1/2" x WOF. Subcut (10) 1 1/2" x 4 1/2" rectangles.
E		43186-5	1/8	For C Block: (1) 2" x WOF. Subcut (6) 2" x 6 1/4" rectangles.
F		43186-6	1/4	For B Block: (2) 3" x WOF. Subcut (8) 3" x 5 1/4" rectangles.
G		43187-8	3/4	For D Block: (1) 2 1/2" x WOF. Subcut (4) 2 1/2" x 7 1/2" rectangles. For Binding: (6) 2 1/4" x WOF
H		43187-9	1/8	For C Block: (1) 2" x WOF. Subcut (6) 2" x 4 1/2" rectangles.
I		43188-11	1/4	For B Block: (2) 3" x WOF. Subcut (8) 3" x 6 1/2" rectangles.
J		43188-12	1/8	For A Block: (2) 1 1/2" x WOF. Subcut (10) 1 1/2" x 6 1/2" rectangles.
K		43189-13	1	For A Block: (2) 1 1/2" x WOF. Subcut (10) 1 1/2" x 3 1/2" and (10) 1 1/2" x 2" rectangles, and (10) 1 1/2" x 1 1/2" squares. (1) 2" x WOF. Subcut (10) 2" x 3" rectangles. For B Block: (1) 1 1/2" x WOF. Subcut (8) 1 1/2" x 3" rectangles. (1) 2 3/4" x WOF. Subcut (8) 2 3/4" x 3" rectangles. For C Block: (1) 2" x WOF. Subcut (6) 2" x 3 1/2" and (6) 2" x 1 3/4" rectangles. For D Block: (1) 2" x WOF. Subcut (4) 2" x 3 1/2" and (4) 2" x 1 3/4" rectangles. For Corner Squares in Inner Border #1: (1) 7 1/2" x WOF. Subcut (4) 7 1/2" x 7 1/2" squares. For Inner Border #2: (5) 1 1/2" x WOF. Piece strips and subcut (2) 1 1/2" x 46 1/2" and (2) 1 1/2" x 54 1/2" strips.



Pirate's Lure

L		43190-17	3/4	For Outer Border: (6) 3 1/2" x WOF. Piece strips and subcut (2) 3 1/2" x 52 1/2" and (2) 3 1/2" x 56 1/2" strips.
M		43190-18	1/4	For A Block: (2) 2" x WOF. Subcut (10) 2" x 6 1/2" rectangles.
N		43191-20	1/8	For D Block: (1) 2" x WOF. Subcut (4) 2" x 6 1/4" rectangles.
O		43192-25	1/4	For Block A: (2) 2" x wof. Subcut (10) 2" x 5" rectangles.
		Backing	3 7/8	
				58" x 68" piece of batting

CONSTRUCTING BLOCK A:

1. Sew (1) 1 1/2" x 3 1/2" K rectangle and (1) 1 1/2" x 4 1/2" D rectangle together on the short sides.



(diagram shown rotated 90° clockwise)

2. Sew (1) 1 1/2" x 2" K rectangle and (1) 2" x 6 1/2" M rectangle together on the short sides.



(diagram shown rotated 90° clockwise)

3. Sew (1) 2" x 3" K rectangle and (1) 2" x 5" O rectangle together on the short sides.



(diagram shown rotated 90° clockwise)

4. Sew (1) 1 1/2" x 1 1/2" K square and (1) 1 1/2" x 6 1/2" J rectangle together.



(diagram shown rotated 90° clockwise)



Pirate's Lure

5. Sew together subunits made in steps 1-4 to complete 1 block A. Make a total of (10) blocks.



Square to 5 1/2" x 7 1/2"

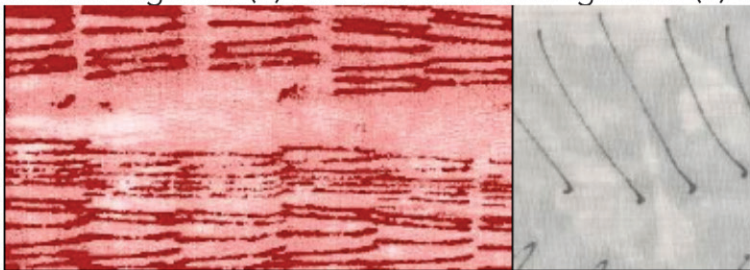
Constructing B Block

1. Sew together (1) 1 1/2" x 3" K rectangle and (1) 3" x 6 1/2" I rectangle.



(diagram shown rotated 90° clockwise)

2. Sew together (1) 2 3/4" x 3" K rectangle and (1) 3" x 5 1/4" F rectangle.

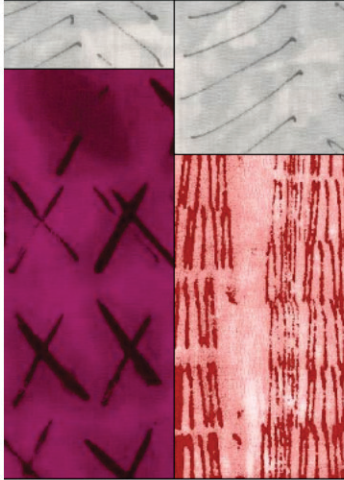


(diagram shown rotated 90° clockwise)



Pirate's Lure

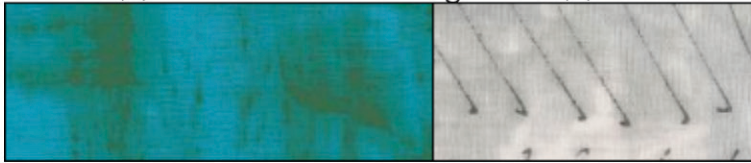
3. Arrange and sew together sewn units made in steps 1-2 to complete 1 Block B. Repeat to make a total of (8) blocks.



Square to 5 1/2" x 7 1/2"

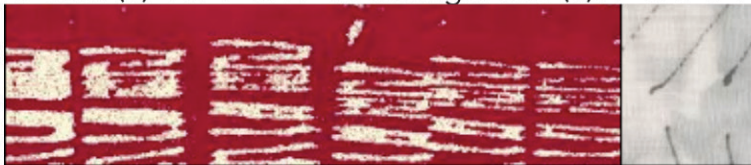
Constructing C Block

1. Sew (1) 2" x 3 1/2" K rectangle and (1) 2" x 4 1/2" H rectangle.



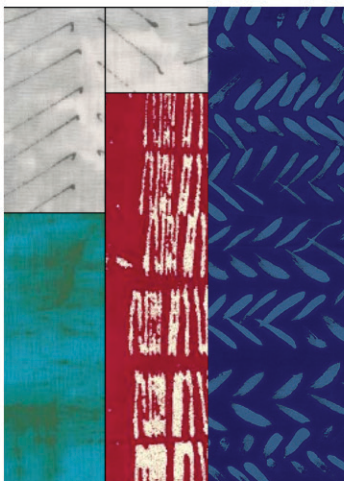
(diagram shown rotated 90° clockwise)

2. Sew (1) 1 3/4" x 2" K rectangle and (1) 2" x 6 1/4" E rectangle.



(diagram shown rotate 90° clockwise)

3. Sew sewn units made in steps 1-2 together, and add (1) 2 1/2" x 7 1/2" B rectangle to the right to complete 1 block C. Repeat to make a total of (6) blocks.



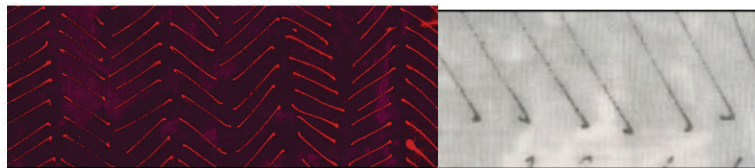
Square to 5 1/2" x 7 1/2"



Pirate's Lure

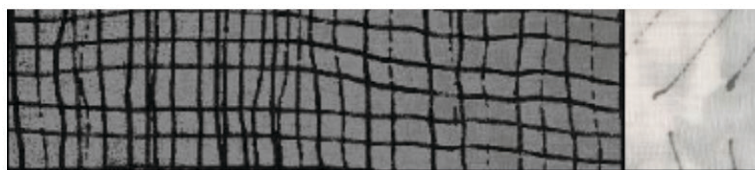
Constructing D Block

1. Sew (1) 2" x 3 1/2" K rectangle and (1) 2" x 4 1/2" A rectangle.



(diagram shown rotated 90° clockwise)

2. Sew (1) 1 3/4" x 2" K rectangle and (1) 2" x 6 1/4" E rectangle.



(diagram shown rotated 90° clockwise)

3. Sew sewn units made in steps 1-2 together, and add (1) 2 1/2" x 7 1/2" G rectangle to the right to complete 1 block D. Repeat to make a total of (4) blocks.



Square to 5 1/2" x 7 1/2"



Pirate's Lure

Quilt Top Assembly

1. Inner border #1. Arrange and sew together (3) Block A, (2) Block B, (2) Block C and (1) Block D to make a pieced column. Repeat to make (2) pieced columns, and add columns to the opposite long sides of 30 1/2" x 40 1/2" C quilt center.

2. Arrange and sew together (2) Block A, (2) Block B and (1) Block C and (1) Block D to make a pieced row. Add (2) 7 1/2" x 7 1/2" K squares to the opposite short sides of pieced row. Make a total of 2 rows, and add to the remaining opposite sides of quilt center.

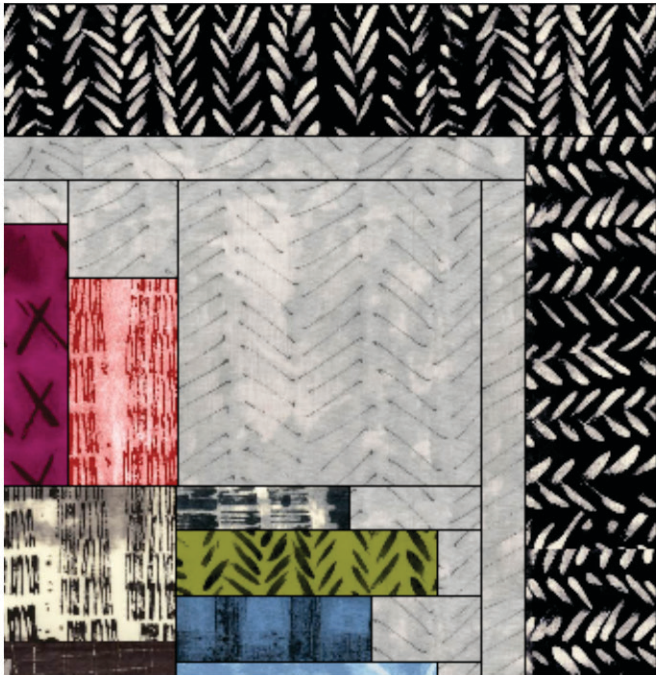


3. Inner border #2. Sew (2) 1 1/2" x 54 1/2" K strips to the opposite long sides of quilt center, followed by (2) 1 1/2" x 46 1/2" K strips to the remaining opposite short sides.



Pirate's Lure

4. Outer border. Sew (2) 3 1/2" x 56 1/2" L strips to the opposite long sides of quilt center, followed by (2) 3 1/2" x 52 1/2" L strips to the remaining opposite short sides to complete quilt top.



Quilting Instructions

With the backing fabric laying taut, place batting and then quilt top to form quilt sandwich. Baste sandwich. Quilt as desired Bind to finish quilt.