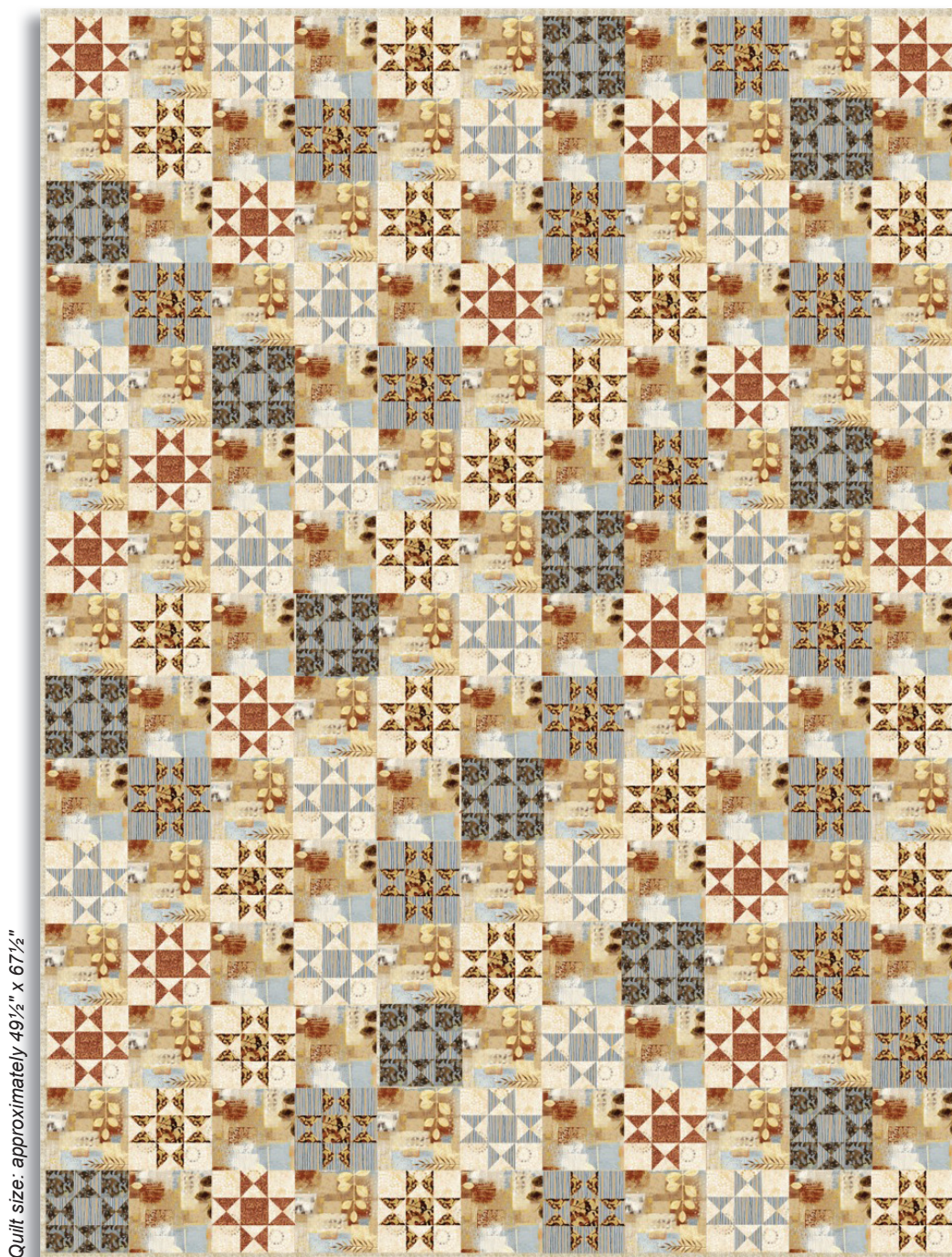


Earthtones 2 by Norman Wyatt

Earth Energy quilt by Leslie Sonkin



Quilt size: approximately 49½" x 67½"

Featuring fabrics from the Earthtones 2 collection by Norman Wyatt



pbtex.com • 800-351-9087 • 45 Washington Street, Pawtucket, RI 02860

NORMAN WYATT
Signature
A DIVISION OF P & B TEXTILES

Earthtones 2

Fabric collection by Norman Wyatt for P&B Textiles

Earth Energy quilt designed by Leslie Sonkin

Skill level: Easy • Finished Quilt Size: approximately 49 1/2" x 67 1/2"

Finished Block Size: 4 1/2" square

Yardages:

Fabric A: 26656 – MUL 1	1 3/4 yards
Fabric B: 26658 – CRE 1	1 5/8 yards
Fabric C: 26659 – NAT 1	5/8 yard
Fabric D: 26660 – SLA 1	1 1/8 yards
Fabric E: 26661 – GOL 1	5/8 yard
Fabric F: 26661 – SLA 1	1/2 yard
Fabric G: 26662 – RUS 1	1/2 yard
Backing: 26657 – STO 1	3 1/3 yards
Batting:	58" x 76"

Cutting Instructions:

Strips are cut across the width of fabric unless otherwise stated.

From Fabric A (26656 – MUL 1):

1. Cut (11) 5" strips. Sub cut (82) 5" squares.

From Fabric B (26658 – CRE 1):

1. Cut (8) 2 3/4" strips. Sub cut (108) 2 3/4" squares.
(Blocks #1, 2 and 3)
2. Cut (11) 2" strips. Sub cut (216) 2" squares.
(Blocks #1, 2 and 3)

From Fabric C (26659 – NAT 1):

1. Cut (7) 2 1/4" strips for binding.

From Fabric D (26660 – SLA 1):

1. Cut (7) 2 3/4" strips. Sub cut (94) 2 3/4" squares.
(Blocks #2, 4 and 5)
2. Cut (5) 2" strips. Sub cut (95) 2" squares.
(Blocks #2, 4 and 5)

From Fabric E (26661 – GOL 1):

1. Cut (5) 2 3/4" strips. Sub cut (70) 2 3/4" squares.
(Block #3 and 5)
2. Cut (2) 2" strips. Sub cut (35) 2" squares.
(Block #3 and 5)

From Fabric F (26661 – SLA 1):

1. Cut (2) 2 3/4" strips. Sub cut (26) 2 3/4" squares.
(Block #4)
2. Cut (3) 2" strips. Sub cut (52) 2" squares.
(Block #4)

From Fabric G (26662 – RUS 1):

1. Cut (3) 2 3/4" strips. Sub cut (34) 2 3/4" squares.
(Block #1)
2. Cut (1) 2" strip. Sub cut (17) 2" squares.
(Block #1)

Piecing Instructions:

All seams are sewn right sides together. Seam allowances are 1/4"

Basic Block Construction:

Block 1

1. Take two 2 3/4" B1 squares and draw two diagonal lines on the wrong side. Place marked squares on two 2 3/4" G1 squares, right sides together. Sew 1/4" seam on each side of ONE diagonal line (Figure 1).
2. Cut square FIRST on unsewn line, then on remaining drawn line (Figure 1). Press pieced triangles open.

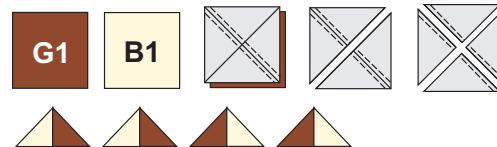


Figure 1 Make 2 of each pieced triangle.

3. Repeat steps 1 and 2 to make eight pieced triangles per block.
4. Sew matching pieced triangles together to make a square (Figure 2). Press. Make four triangle units.



Figure 2 Make 4.

5. Sew block together using four triangle units, four 2" B2 squares and one 2" G2 square (Figure 3). Block should be 5" square. Press. Make seventeen of Block 1.

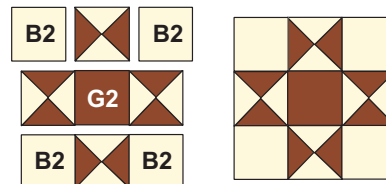


Figure 3 Block 1 Make 17.

Block 2

6. Follow steps 1-5, using B1, B2, D1 and D2 squares (Figure 4). Make eighteen of Block 2.

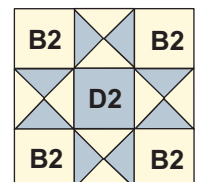


Figure 4
Block 2 Make 18.



Block 3

7. Follow steps 1-5, using B1, B2, E1 and E2 squares (Figure 5).
Make nineteen of Block 3.

Block 4

8. Follow steps 1-5, using D1, D2, F1 and F2 squares (Figure 6).
Make thirteen of Block 4.

Block 5

9. Follow steps 1-5, using D1, D2, E1 and E2 squares (Figure 7).
Make sixteen of Block 5.

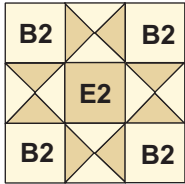


Figure 5
Block 3 Make 19.

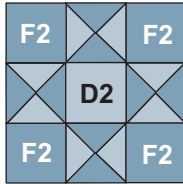


Figure 6
Block 4 Make 13.

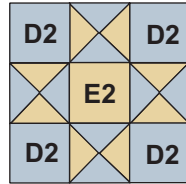


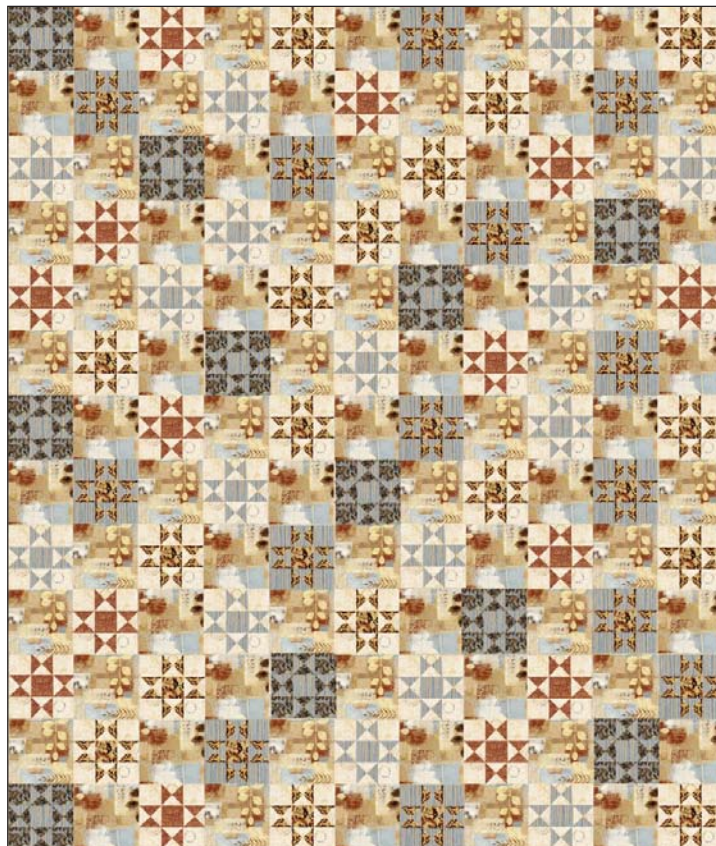
Figure 7
Block 5 Make 16.

Quilt Assembly:

1. Referring to Quilt Diagram, sew assorted blocks alternately together with 5" A squares, to make fifteen rows of eleven blocks/squares each. Press.
2. Sew rows together. Press.

Finishing:

1. Prepare backing with a horizontal seam to measure 58" x 76".
2. Layer backing, batting and quilt top. Baste layers together.
3. Quilt as desired.
4. Trim layers even with top.
5. Join seven 2 1/4" C1 binding strips with diagonal seams. Press seams open. Press strip in half lengthwise with wrong sides together to make double-fold binding. Sew binding to quilt using your favorite method.
6. Make a label and sew to back of the quilt.



Quilt
Diagram

Earthtones 2

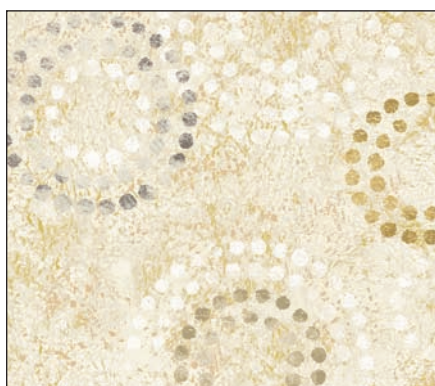
Metallic Accent Fabric Collection by Norman Wyatt



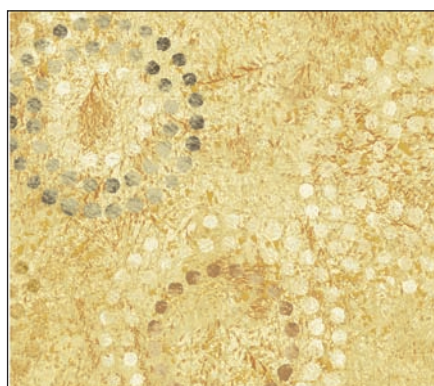
26656 – MUL 1* 15%



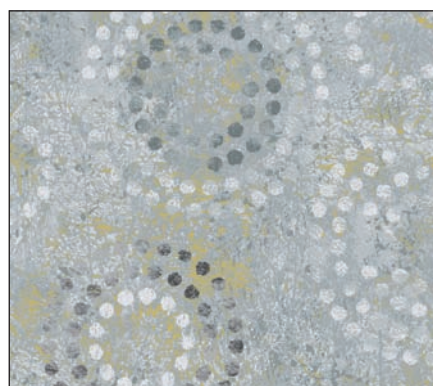
26657 – STO 1* 15%



26658 – CRE 1*



26658 – GOL 1



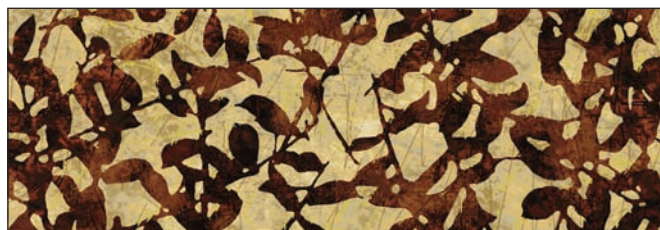
26658 – SLA 1



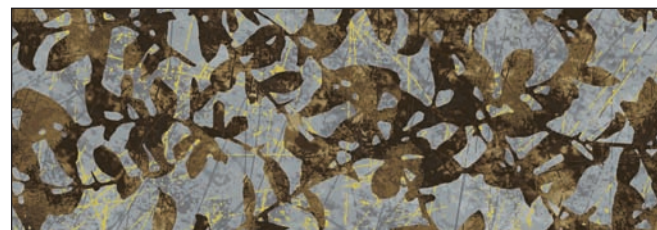
26659 – NAT 1*



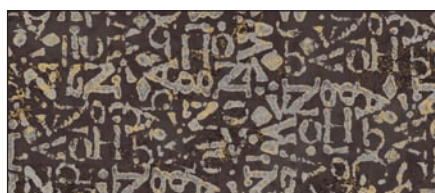
26660 – SLA 1*



26661 – GOL 1*



26661 – SLA 1*



26662 – BRO 1



26662 – RUS 1*



26662 – TAN 1

NORMAN WYATT

Signature

A DIVISION OF P & B TEXTILES

*Fabrics used in quilt.

P&B Textiles • pbtex.com • 800-351-9087 • 45 Washington Street, Pawtucket, RI 02860