

stash
buster



Pine Needles

Fine Fabrics • Quilting • Needlework

www.pineneedlesonline.com

the Mighty tote

Sturdy and stout, carry the Mighty Tote out and about! It will hold your purchases, groceries and projects wherever you go. Reduce plastic and save the world! So easy to make — a matched set will have other shoppers wondering where they, too, can get their own Mighty Totes!

Fabric requirements

based on fabric 40" wide

- **fabric A**

tote outside and handles — 1 yard (1-3/8 for striped fabric cut vertically)

approximately 12" x 12" x 12"

- **fabric B**

tote lining and bottom sleeve — 1-1/4 yard (1-5/8 for striped fabric cut vertically)

- one piece of heavy cardboard 12" x 12"



Cut — read all directions before cutting

fabric A

tote outside — cut two pieces 19" x 25"*

tote handles — cut two pieces 19" x 5-1/2"

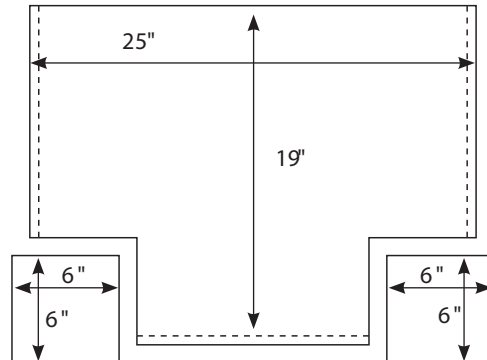
fabric B

tote lining — cut two pieces 19" x 25"*

bottom sleeve — cut two pieces 13-3/8" x 13-3/8"

*for non-striped fabric (or stripes running horizontally) cut the 25" side along the selvage; for striped fabric, cut each piece individually with the 25" side perpendicular to the selvage

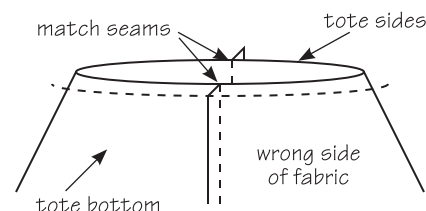
diagram one



Construction — all seams are 1/2"

1. Tote outside — With right-sides together, cut six-inch square corner notches from the bottom corners. See diagram one. Sew right, left and bottom seams. See diagram one. Press seam to one side.
2. To form tote bottom and sides, match the side seams to the bottom seam and sew along this edge. Press towards the center of the tote bottom. See diagram two.

diagram two



3. Tote lining — Repeat steps 1 and 2 leaving an eight-inch opening in one of the side seams in step 1.
4. Tote handles — See diagram three. For each handle: on one edge, fold 2" towards center lengthwise and press (a). Fold and press under 1/2" on the opposite edge (b). Fold this edge (b) over to the center of the handle. Stitch on edge (b) at the center of the handle and then edge stitch.
5. See diagram four. Pin handles in place on the right-side of the tote outside. Place the center of each handle 3-1/2" from the center of the tote.
6. With right sides together, pin the top edge of the tote lining to the top edge of the tote outside. Sew together being careful to catch only the ends of each handle in the seams but not catching any of the rest of the handle. See diagram five.
7. Turn the tote right-side out through the opening in the side seam. Press the top edge keeping the tote lining — inside, and the tote outside — outside. Stitch on the edge of this fold.
8. On the inside of the tote sew the opening in the lining side seam closed. By hand or machine, tack the lining and the outside together at bottom corners.
9. For the bottom sleeve: with right-sides together, sew along three sides of the 13-3/8" squares. See diagram six. Press under 1/4" on the open edge. Press under a second 1/4" and stitch hem in place. Turn right-side out. Slide in the 12" x 12" cardboard and slip the bottom in the Mighty Tote. Voilà! You are set to go!

diagram three

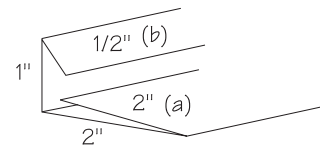


diagram four

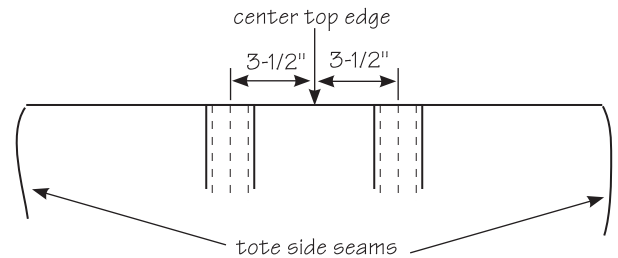
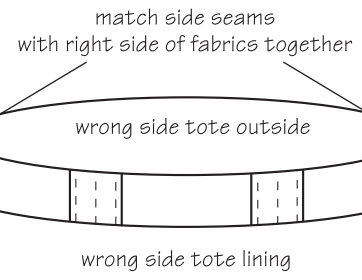


diagram five



Note: Be sure to remove the cardboard to wash your Mighty Tote and bottom sleeve.

More ideas: Use your mighty imagination to personalize and embellish your own Mighty Tote. Use pre-quilted fabric for the tote outside, or layer and quilt your own. Try piecing the tote outside. Add pockets (inside or out) or embellishments. The Mighty Tote works well without the cardboard insert. Without the insert you might want to add a button and loop closure.

This pattern has been provided to you by:

diagram six

