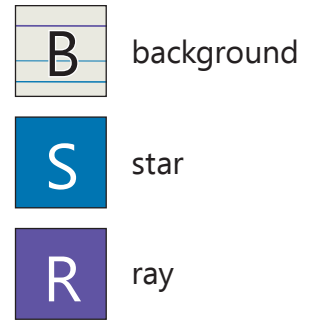
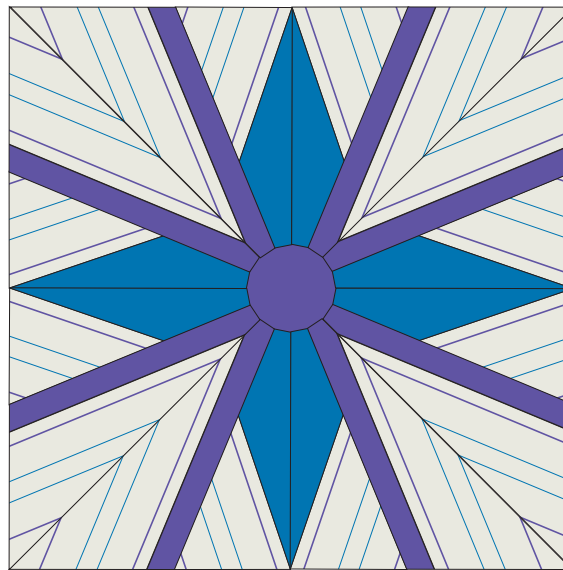


# December Block

Ending our series on the 22.5 we have this one last block for you.

Be sure to check out the finishing guide to complete your sampler of 22.5 Squedge Blocks.



Finished block:  
16 1/2" square

| Fabric | Exact Amount | Suggested Yardage<br><i>for a stripe running perpendicular to the selvage or an all over design</i> | Suggested Yardage<br><i>for a stripe running parallel to the selvage</i> |
|--------|--------------|---|--|
| B      | 17"          | 5/8 yd*   | 1 1/4 yd*  |
| S      | 6"           | 1/4 yd  | 1 1/4 yd   |
| R      | 5 1/2"       | 1/4 yd  | 1 1/4 yd   |

\* May require more fabric depending on design repeats

| Fabric | Number of Strips | Strip Width    |
|--------|------------------|----------------|
| B      | two              | 4" x width     |
|        | two              | 4 1/4" x width |
| S      | two              | 3" x width     |
| R      | two              | 1 1/4" x width |

To get exact matches with your striped points, be sure you cut identical strips from the striped fabric.

## Tool Preparation

Apply adhesive non-slip rings to both the back and front side of the tool.

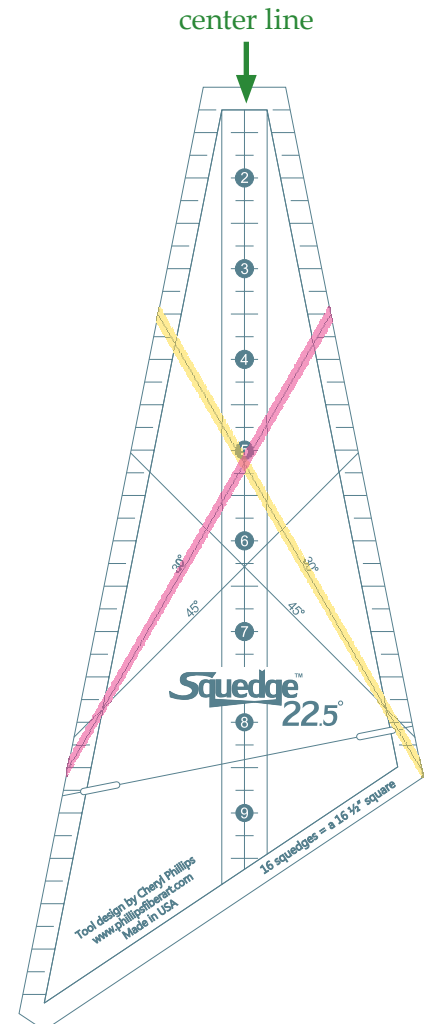
You need to have these on both sides as you'll be cutting pieces with the tool flipped over.

On the back side of the tool place a strip of pink glow tape on the 30 degree line as shown.

Place a strip of yellow tape on the opposite 30 degree line.

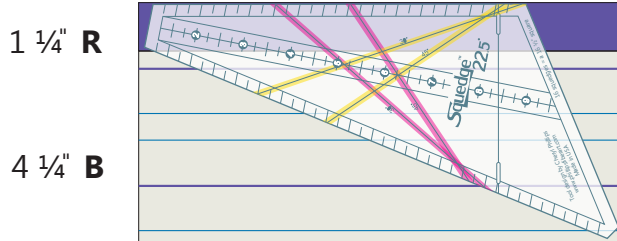
*Using this tape has helped me keep the cuts straight. We'll continue to use these markings on the next few month's blocks. You can find the glow tape at many quilt shops and online stores, including mine.*

Notice the little slots in the tool? This is how you'll know where to cut the shorter *Squedge* pieces. Use a mechanical pencil to mark a line in each slot onto the fabric. Cut around the other sides of the tool, then remove the tool. Using a straight edge (or the outside edge of this tool) connect the marked lines and cut across the bottom of the *Squedge* piece.

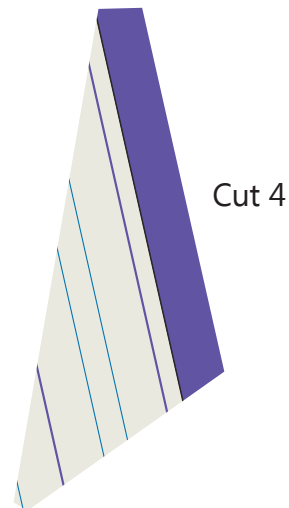


*Helpful labels for the strip sets are found on page 4.*

Place the tool on the strip set so the **edge** is aligned 1" from the seam.  
The words on the tool are **UP**.  
Cut a *full* tool shape.

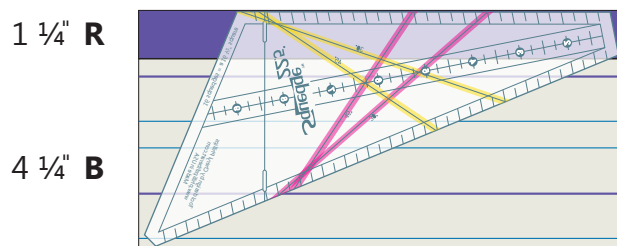


Set 1

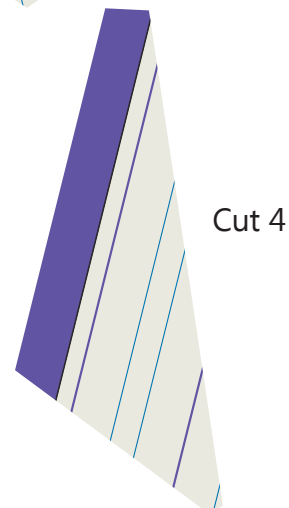


Cut 4

Place the tool on the strip set so the **edge** is aligned 1" from the seam.  
The words on the tool are **DOWN**.  
Cut a *full* tool shape.

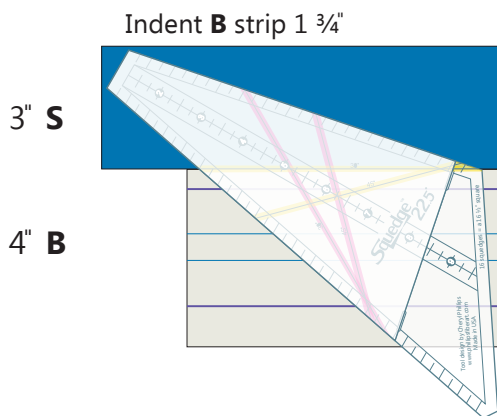


Set 2

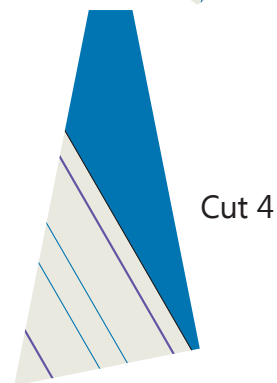


Cut 4

Place the tool on the strip set so the **yellow** 30 degree line is aligned with the seam.  
The words on the tool are **UP**.  
Mark lines in the little slots.  
Cut a *partial* tool shape.



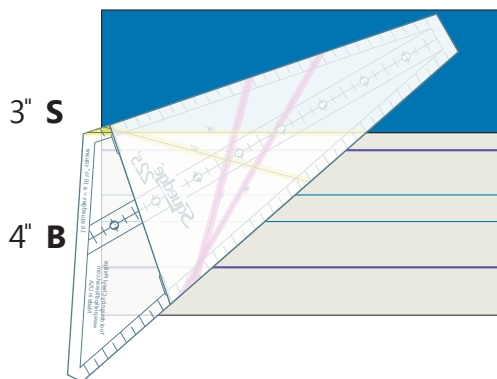
Set 3



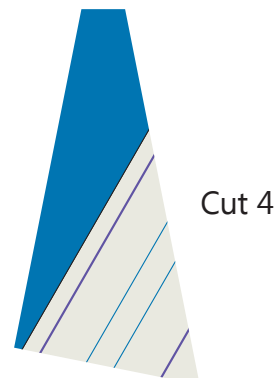
Cut 4

*Yes the tool does extend beyond the strip-- Remember you're cutting it at the slotted lines.*

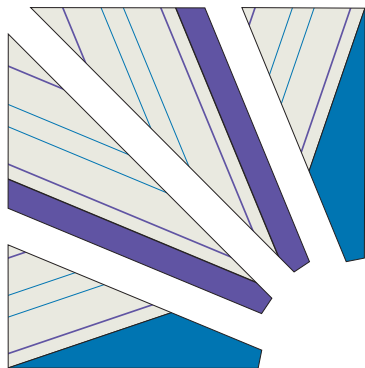
Place the tool on the strip set so the **yellow** 30 degree line is aligned with the seam.  
The words on the tool are **DOWN**.  
Mark lines in the little slots.  
Cut a *partial* tool shape.



Set 4



Cut 4



**Fabric Waste?**

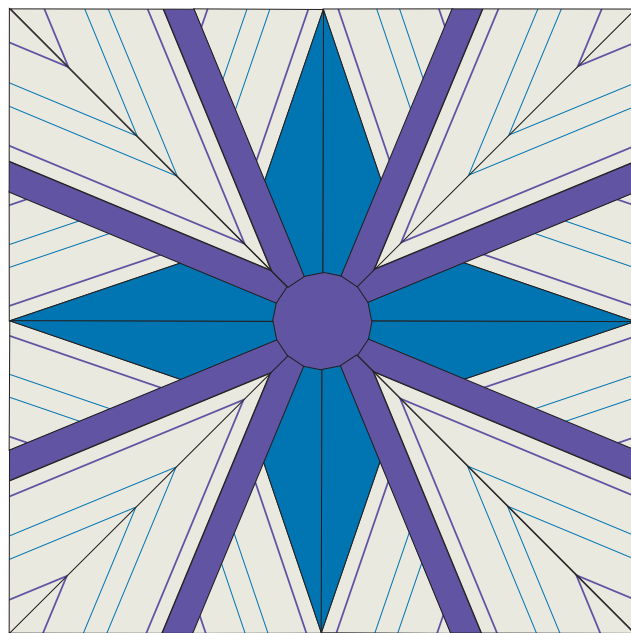
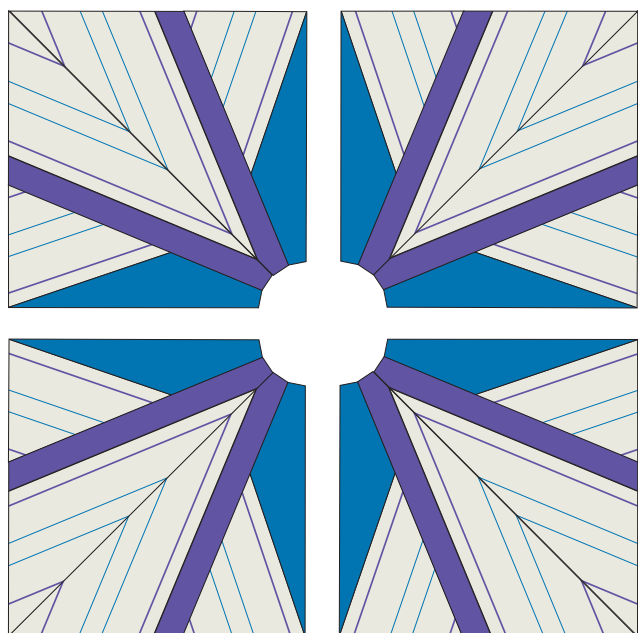
You may notice you had quite a bit of strip set left after cutting the four pieces. For these Sampler projects, you can

- Set these extra strip sets aside for next month's blocks
- Make more of the same blocks

Arrange the pieces as shown.

Sew four together to make a quarter square.

Sew the four quarter squares together to make the block.



**Set #1 Label**

1 1/4" **S**      4 1/4" **B**

Align 1" from **Edge**  
with words facing **UP**

*Cut Full wedge*

**Set #2 Label**

1 1/4" **S**      4 1/4" **B**

Align 1" from **Edge**  
with words facing **DOWN**

*Cut Full wedge*

**Set #3 Label**

3" **S**      4" **B**

Use **yellow** 30 degree line  
with words facing **UP**

*Cut Partial wedge*

**Set #4 Label**

3" **S**      4" **B**

Use **yellow** 30 degree line  
with words facing **DOWN**

*Cut Partial wedge*

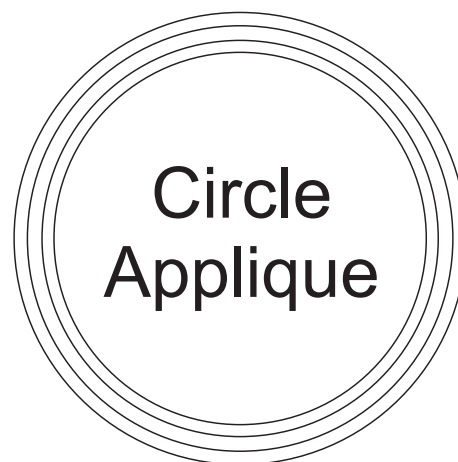
Iron a square of freezer paper to the back of the project to stabilize the center opening.

Trace a circle onto freezer paper.

Iron the freezer paper onto a scrap of fabric you've chosen for your center applique.

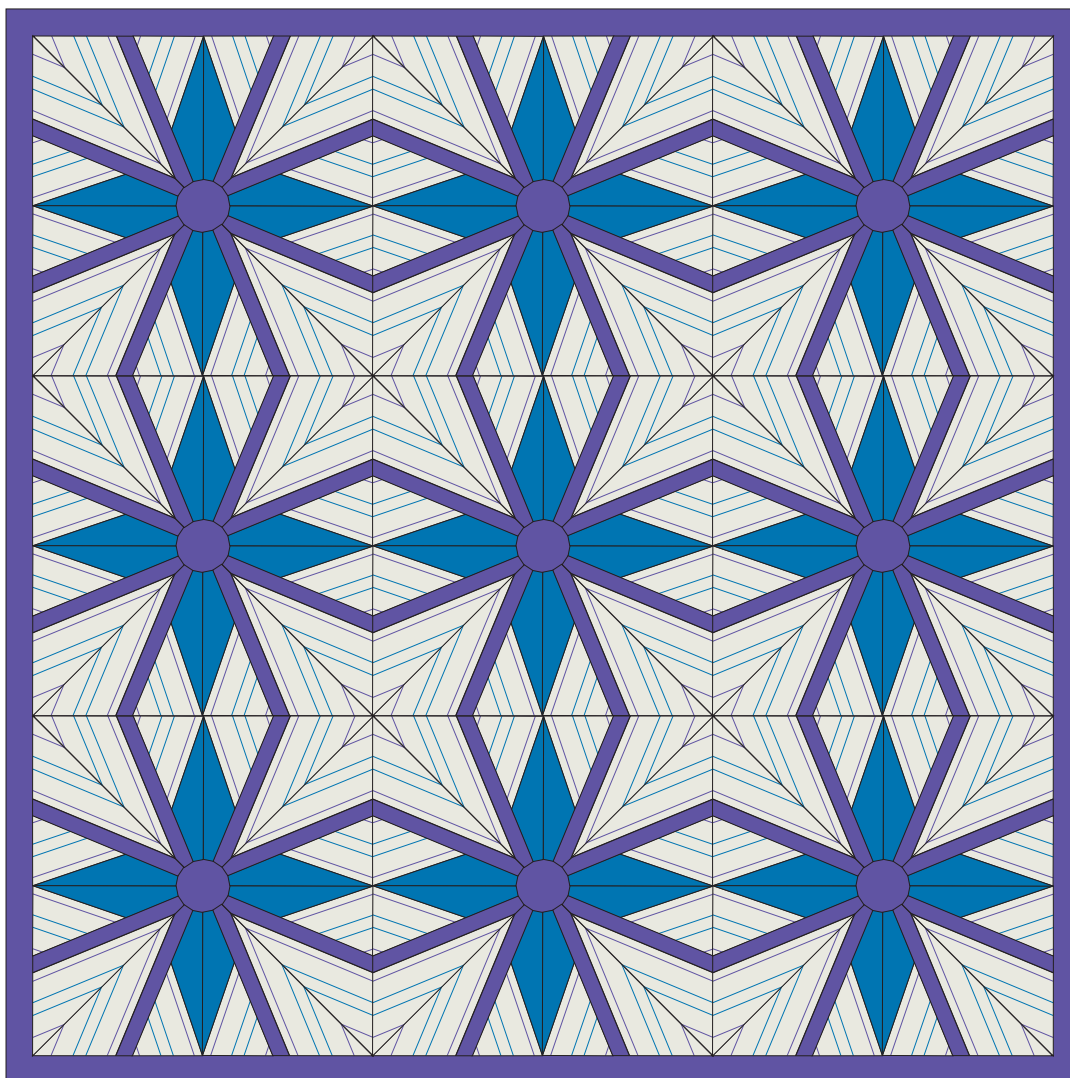
Cut the fabric, allowing  $\frac{1}{4}$ " for turning under.

Applique the circle to the center opening.



## Options For Finishing it Now

*Although the plan is to make a sampler, you can also use just this block for a great table runner or baby quilt. Simply make more blocks! If you want to make your sampler, check out our finishing guide in the free Squedge block page of the website.*



Sample made with December blocks

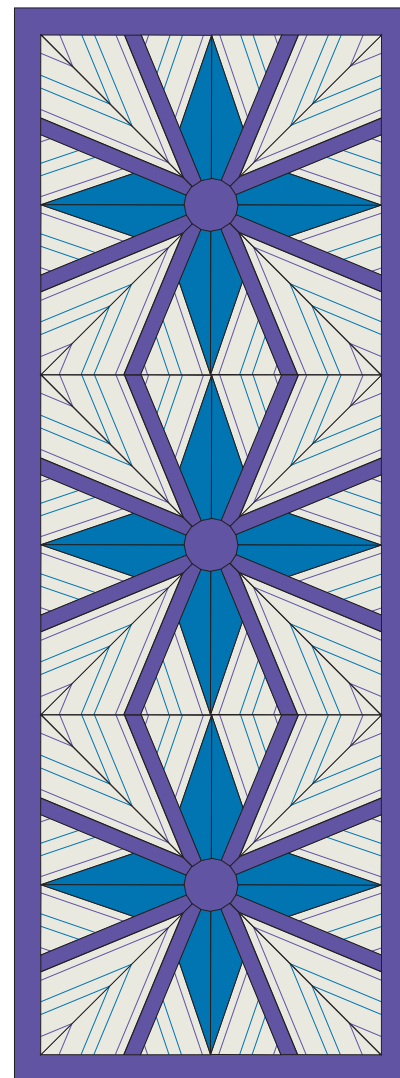


Table Runner