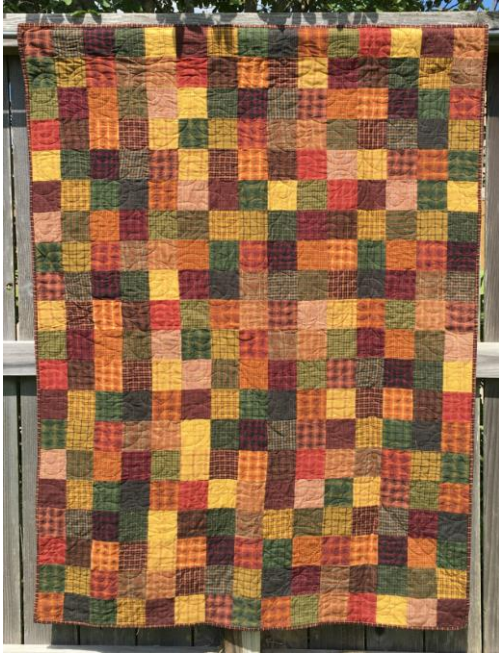


FREE PATTERN

MEDIUM CONFETTI 45" X 60"



Raid your stash and start cutting $3\frac{1}{2}$ " wide strips. You'll have enough to make this quilt up in no time.

I love the way it looks in plaids!

© 2014 Seattle Quilt Company. All Rights Reserved. Limited reproduction rights may be granted.

Fabric Requirements:

FEATURE PRINTS:	2 1/2 to 3 yards assorted fabrics
BACKING (PIECED):	2 3/4 yd
WADDING:	49" X 61"
BINDING:	5/8 yd

SEATTLE QUILT COMPANY

Tel: (281) 394-0438

Email: lisa@seattlequiltcompany.com

www.seattlequiltcompany.com

FSQC-MC1



MEDIUM CONFETTI

All seams are 1/4". Press seams as indicated.

Cutting Instructions:

FROM THE ASSORTED FEATURE PRINTS:

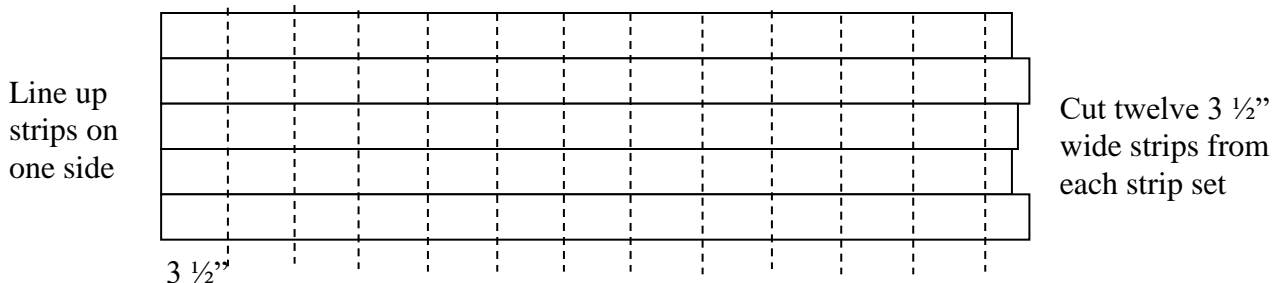
- Cut a total of twenty-five strips, 3 1/2" x width of fabric.

FROM THE BINDING FABRIC:

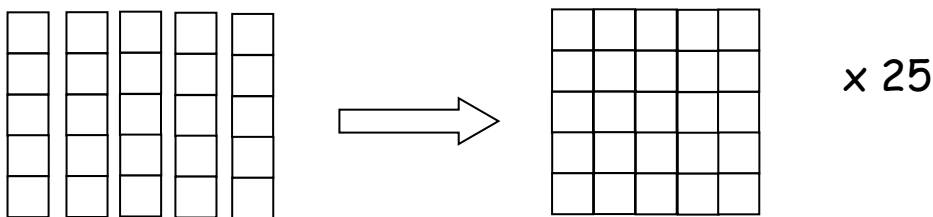
- Cut six strips 2 1/2" x width of fabric.

Sewing Instructions:

Sew five strips together and cut into 3 1/2" slices. Repeat four times with remaining strips.

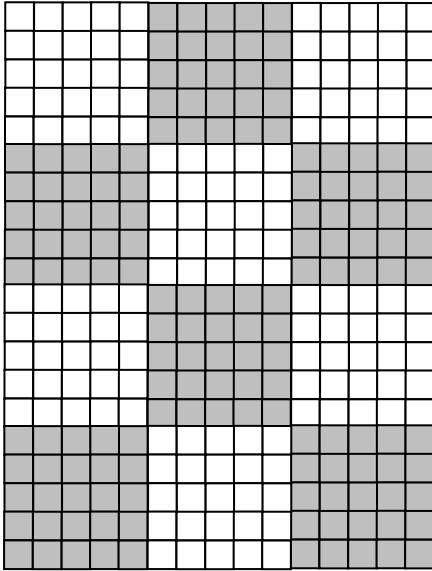


Sew five slices together to form a 25-patch block. Make twelve, 25-patch blocks. (Note: you need sixty total slices to make twelve blocks, or twelve from each strip set.) Line each strip set up on one side to make sure you can get twelve slices out of each strip set.



MEDIUM CONFETTI

Set quilt together three blocks across and four blocks down.



Finished dimensions are approx. 45" x 60".

Layer and quilt.

Join the binding strips end to end and attach to quilt using your preferred method.

Enjoy!