

X  
X  
X  
X  
X  
X  
X  
X  
X  
X  
X  
X

## A square pillow with a geometric pattern of triangles in white, orange, blue, and marbled patterns, resting on a dark brown chair. A portion of a brown, textured blanket is visible in the bottom right corner.

XXXXXXXXXXXXXXXXXXXX





# ALLEGRO



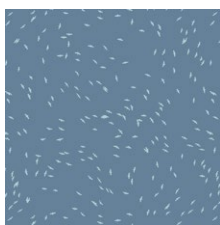
## Earthen

FABRICS DESIGNED BY KATARINA ROCCELLA

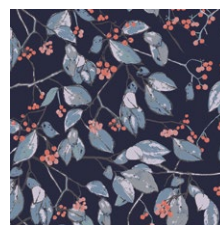
ARIA



EAR-33950  
GAIA EVENTIDE



EAR-33951  
MIGRATION NORTH



EAR-33952  
SEREIN BRANCHLET



EAR-33954  
FLORA FIELDS FLAX



EAR-33955  
ICE FORESTRY



EAR-33957  
ALLIUM SPECKS ROSE

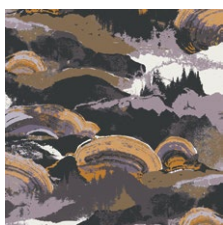


EAR-33958  
GROUNDED GLACIAL

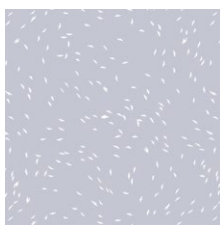


EAR-33959  
BENEATH OUR FEET

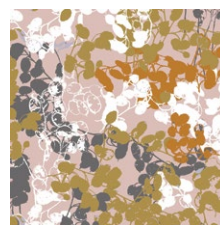
TERRA



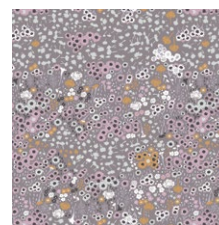
EAR-43950  
GAIA SUNSHINE



EAR-43951  
MIGRATION SOUTH



EAR-43953  
GENTLE LUNARIA



EAR-43954  
FLORA FIELDS ANEMONE



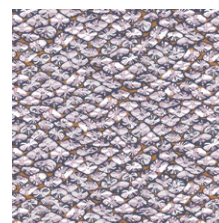
EAR-43956  
FOXNEST HAZE



EAR-43957  
ALLIUM SPECKS PURE



EAR-43958  
GROUNDED TIERRA



EAR-43960  
EARTHING SEEDS



FEEL THE DIFFERENCE © 2019 Courtesy of Art Gallery Quilts LLC. All Rights Reserved.

# ALLEGRO

FINISHED SIZE | 17" x 17"

## FABRIC REQUIREMENTS

Fabric A	EAR-33959	$\frac{1}{3}$ yd.
Fabric B	PE-458	$\frac{1}{6}$ yd.
Fabric C	DSE-713	$\frac{1}{6}$ yd.
Fabric D	PE-471	$\frac{7}{8}$ yd.

BACKING FABRIC  
PE-471 (Included)

## CUTTING DIRECTIONS

$\frac{1}{4}$ " seam allowances are included.  
WOF means width of fabric.

- Fourteen (14)  $3\frac{7}{8}$ " x  $3\frac{7}{8}$ " from Fabric A
- Three (3)  $3\frac{7}{8}$ " x  $3\frac{7}{8}$ " from Fabric B
- Five (5)  $3\frac{7}{8}$ " x  $3\frac{7}{8}$ " from Fabric C
- Fifteen (15)  $3\frac{7}{8}$ " x  $3\frac{7}{8}$ " from Fabric D

## CONSTRUCTION

Sew all rights sides together with  $\frac{1}{4}$ " seam allowance.

- Start by pairing all the  $3\frac{7}{8}$ " HST as the diagram below.
- Draw a diagonal line on the wrong side of each pair.
- Sew a  $\frac{1}{4}$ " seam on either side of the drawing line.
- Cut directly on the drawn line.

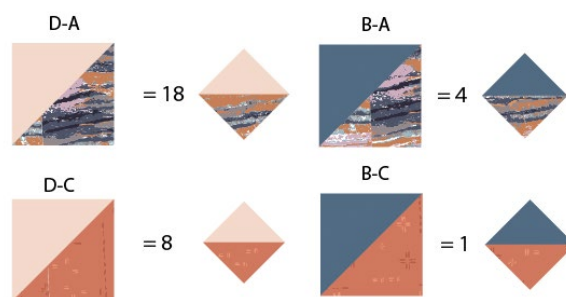
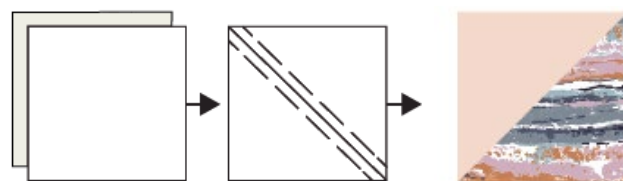


DIAGRAM 1

- With the left overs of your  $3\frac{7}{8}$ " perfect squares, draw an diagonal line on the wrong side of each pair and cut directly on the draw line,
- Set aside.

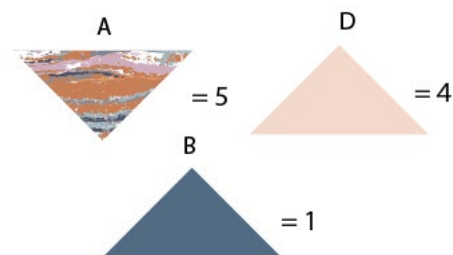


DIAGRAM 2

- Follow diagram below for the block assembly of each row.

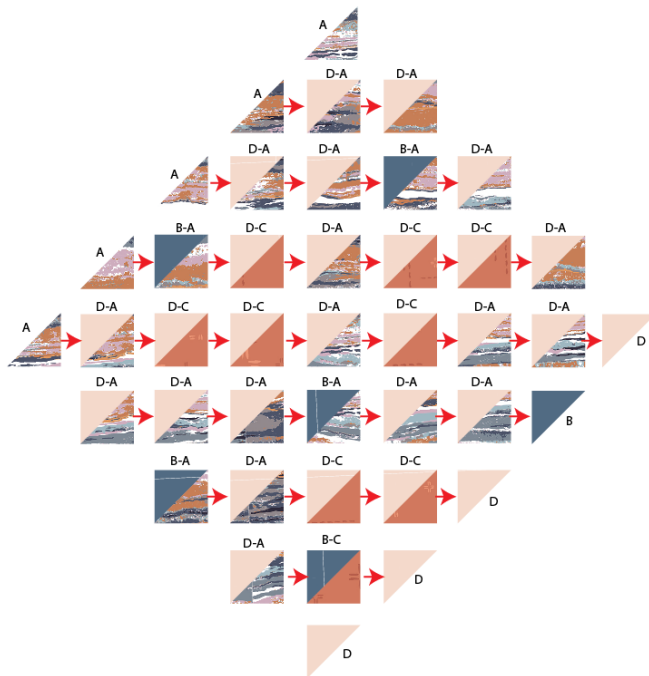


DIAGRAM 3

- Now, follow diagram below for each row assembly.

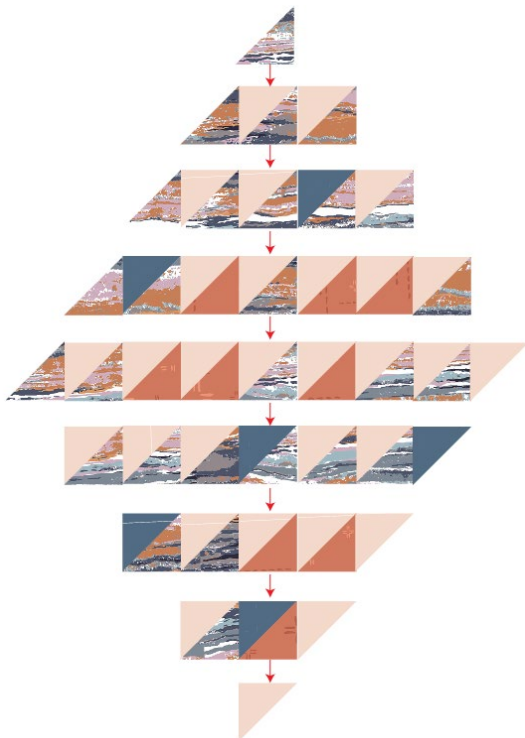


DIAGRAM 4

XXXXXXXXXXXXXXXXXXXXXXXXXXXXXXXXXXXX

- Once assembled, rotate the piece to a 45 degree angle and trim to a  $17\frac{1}{2}$ " x  $17\frac{1}{2}$ " perfect square.



DIAGRAM 4

## CREATING THE BACK PILLOW

*Sew all rights sides together with  $\frac{1}{4}$ " seam allowance. Press open.*

- To make a envelope back for your pillow take both  $17\frac{1}{2}$ " x 14" rectangles and fold one 14" side on each rectangle in  $\frac{1}{2}$ " and press and then fold another  $\frac{1}{2}$ " and press.
- Top stitch as close to the edge as possible.
- Place rectangles right side together on top of each other to the front of your pillow and stitch all the way around your pillow at  $\frac{1}{4}$ " seam allowance.
- Clip corners at seam allowance and flip piece to the right side of the fabric.
- Fill pillow with a 17" x 17" pillow form and enjoy!





[artgalleryfabrics.com](http://artgalleryfabrics.com)

NOTE: While all possible care has been taken to ensure the accuracy of this pattern, We are not responsible for printing errors or the way in which individual work varies. Please read instructions carefully before starting the construction of this quilt. If desired, wash and iron your fabrics before starting to cut.

© 2019 Courtesy of Art Gallery Quilts LLC. All Rights Reserved.