

February 2018

New From Market

Jill Elia

In this Issue:

New From Market

Jill introduces new self-finishing projects introduced at the January Market. They are in the shop now!

2018 is the Year for Adding Dimension

Karen Chrissinger explains how she adds dimension to her work using a Danji canvas she just completed.

Beading #1

What do the bead sizes mean? What size do I use for my canvas? What is a Delica bead? Diane Snyder explains it all!

Classes

Two new classes are scheduled this year. Learn to paint a canvas and embellish it. Take a great class from Laura Taylor to add to your Thanksgiving décor.

Clubs

We start a short and sweet club featuring the art work of Rebecca Wood – her seasonal houses.

Canvases

Just in from January Market!

Store Calendar

Birthday Coupon

Contact Us:

244 W. Olentangy St.
Powell, OH
(614) 436-3905
Jill@louisesneedlework.com
<https://www.facebook.com/LouisesNeedlework>

Store Hours: (EST)

Monday: 10am to 4pm
Tuesday: 10am to 7pm
Wednesday: 10am to 4pm
Thursday: 10am to 4pm
Friday: 10am to 4pm
Saturday: 10am to 4pm

January flew by and I ended the month with a trip to Las Vegas to attend our January Wholesale Market. I try to attend every market as I get to see my shop owner and vendor friends and bounce around creative ideas for the shop. The January market is our largest market and it is often the market here new vendors are introduced. This year was no exception.

One of the new vendors is Victoria Whitson who sells tote bags and project bags. However, the biggest hit in her line is a self-finishing project that comes with a canvas and a mini frame. The canvas designs were designed by Patricia Sone. These darling projects are a quick stitch and a great little gift. They are also the perfect little item to decorate with on a regular basis. We have a number of these in the shop so be sure to stop in and see them.



Another self-finishing item was presented by Tili Tomas of Planet Earth Fibers. At the cash and carry market in September they introduced a line of self-finishing card wallets in brown and black. The line has now expanded to have luggage tags, and slim wallets for women. These beautiful leather goods come in red, bright green and blue. There were even some of the luggage tags that were kitted up with wool and an alphabet chart. We have a number of these items in the shop as well. This line of accessories is another great quick stitch and a great gift.

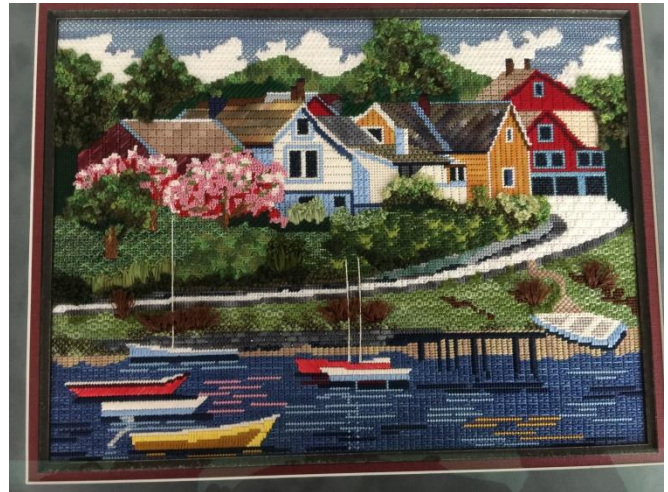


The January market has a decent amount of cash and carry on new items and I did quite a bit of shopping as well as orders. Stop in and see what is new and in stock from all your favorite designers

Creating Dimension

Karen Chrissinger

My mission for 2018, as an in-store teacher and for my own stitching purposes, is to promote putting “dimension” on the canvas. By that, I mean to almost have a three dimensional effect or feeling as if I can walk “into” the canvas and be surrounded by fibers and threads and beads and embellishment. I sometimes am disappointed with my work because it “goes flat”. The stitching is decent, the threads are beautiful, the stitch choices are effective, but, no pizzazz...just flat! Now, not to offend...my daughter absolutely loves the traditional simplistic needlepoint and I create pieces for her with that in mind. To me every piece of needlepoint is worthy. Everyone should develop their own style or their own “rules of engagement” for their canvas. That individual and personal touch is what makes the art of needlepoint so exciting. But, back to my personal goal this year... dimension on canvas.



I purchased the Danji canvas, Sailor's Haven, because it had open spaces for creative stitch choices, was 13 count which I love to stitch, and had a painted subject matter (i.e. trees, bushes, grasses) that I could build up, embellish, or stitch with layers of fibers, etc. The colors appealed to me which I knew would keep my interest throughout the project and I found the piece calming and serene. Well, my choice of canvas was perfect for me...I was obsessed with the project. I also wanted to stitch the subject matter with a masculine touch (have to appeal to the men in my family too!). So, I decided up front to keep the stitches simple...no double, triple layering of threads. I used a lot of straight stitches, angular stitches, open darning stitches, for the water, the boats, the houses, sky. I then, selected more intricate stitch patterns for the grassy areas mixing various threads for distinction of areas. Those stitch selections for the grass required only one thread selection...no layering. I used an interlocking elongated cross stitch for the clouds in a heavy thread to make them float in front of the sky. The sky was done in a simple T-stitch, allowing some canvas to show and became recessive to the clouds. The water was stitched with a simple darning stitch in a variegated sparkly thread. The small colored areas in the water were tent stitched with the various colors of Neon Rays, hoping to create shimmer.

Now it was time to add that layering. I selected a single strand vineyard silk thread (variegated) to create leaves for the trees. I simply did a gathering stitch with the yarn and “swirled” it around on the canvas...letting the thread “pool” it's colors as it may! Some gathers were tight, some were loose, some were single wrap, some were double wrap. Stitching the tree tops was easy-peasy!

The pink trees felt delicate to me. So, I bought 4mm ribbons in three colors and did single wrap French knots placed in different directions. I kept the knots tight so as to make those leaves feel more compact. I used chain stitching for the trunks of the trees.



I then placed the grasses. The brown grasses in front were done with a single strand silk that would separate. I turkey worked them into place, cut and frayed them at the end of the project. Tip: Lightly scotch tape them upright after stitching so when the picture goes to the framer, the grasses have been trained to stand upright. I know, I know...no tape residue on the canvas...but, I broke the rule.

Some of the low bushes around the sidewalk were simply various sizes of French knots and Colonial knots done in a heavy fiber and various colors of green. Great time to use up scraps of threads! I then needed to place some more grasses for affect...not necessarily painted on the canvas. I resorted to my "use ribbon as a thread" technique and incorporated "French knots on a stick" with 4mm and 7mm ribbons in assorted green colors. Placed them around the houses and by the sidewalk. Further ruffled in some ribbon to create bushes.



Oops! I forgot my beads. I place beads somewhere, somehow on 99.9 percent of my work. I had that stitched grey area by the water that was looking "dull". I placed a shiny grey bead between the horizontal straight stitches...like the sun was shining off the cement. I finished up my embellishment with bright silver heavy gage Kreinik for the boat rigging.

I've hung the finished piece in my new home and work area where I see it every day. And as I gaze at it, I really do feel like I created that dimension I desire. I can stand in the middle of the picture surrounded by fibers and ribbons and beads! And everyone that comes to the house is drawn to this particular picture. Some like the simplicity of stitching, some the serenity it creates, some the subject matter. But everyone comments how they feel like they are "standing in the picture". The picture is on display at Louise's Needlework. Come see what you think???



Beads - It's a Numbers Game

Diane Snyder

Many times people will ask what size bead to use on their canvas. Some are happy with size 11 on 18 count, while others prefer size 14. There are many opinions, but the definitive answer is:

It depends.

The first step in choosing is to understand what those numbers mean. Glass beads come in a variety of sizes and shapes, some with single holes and others with multiple holes. The beads used most in canvas embellishment are seed beads. These are round in shape, and while the actual size of the hole and shape of each bead may vary slightly, they generally are sized by degree and sold by weight in grams.

Seed bead sizes are referred to by "aught". This can be shown as #11; 11/0; 11°; or simply 11. This measurement tells you approximately how many beads are in an inch when they are laid out in a row. The photographs below show a line of 11 seed beads (Fig A), a line of 14 seed beads (Fig B), and a line of 11 Delicas (Fig. C).



Figure A

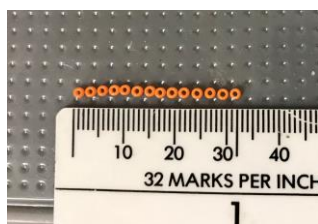


Figure B



Figure C

Another consideration will be the shape of your bead. Seed beads are rounded in shape, almost like a donut seen from above. Delicas (also known as Magnifica beads) are like a cylinder, with larger holes and thin sides. Because of this shape, they are very uniform and are great in areas where you want the beads to lay flat and even. If you are working on 18-mesh canvas, and you want 1 bead per canvas intersection, you would be better off using size 14/15 Delicas instead of an 11 seed. If you are doing random embellishments with single beads or groups of beads (such as loop or messy beading), seed beads in any size will work beautifully.

As an example, the photo (right) shows a comparison of 11/0 seed beads and 11/0 Delica beads. You can see how the same number, size and spacing of the seed beads uses almost twice as much physical width as the Delicas.



Finally, beads are usually sold by weight. There are approximately 110 size 11/0 seed beads in a gram and approximately 290 size 14/0 seed beads in a gram. Delicas sized 11/0 have approximately 190 beads in a gram.

Of course, there are many more factors to consider (such as threads, needles, and stitch types) when embellishing with beads; size and shape are just the beginning. The more you know about the terminology of beads, the better your bead embellishment will be.

Classes

Our first class is a 2-day canvas painting with JP Sligh of Labors of Love. This class will be held March 10th and 11th. You will learn the process of hand painting your own canvas on the first day and the second day will be stitching techniques on your own painted canvas. We have chosen this adorable sunflower as our canvas. The cost for the two-day class is \$260. This includes all supplies and lunch each day.



Our second big class is Melissa Shirley's *First Thanksgiving*. Laura Taylor will be teaching this class for the first time ever at Louise's! We are proud to be the pilot class for this project. Join us for this 3-day event June 22 - 24. This class will feature fabulous threads and stitches as all of Laura's classes do. Call the shop for details.



Clubs

Check out these adorable Rebecca Wood Seasonal Houses! We can't wait to start our monthly club in March with the Spring House. Each kit includes canvas, stitch guide, and sufficient threads to complete the piece. The cost is \$75 per kit. Call the shop if you would like to participate.



Canvases Just In from January Market!!!



Plaid Snowman \$69

Raymond Crawford Designs. Hand-painted on 18 mesh. Total canvas size is 10 x 11.



Cherries – Locally Picked \$182

Melissa Shirley Designs. Hand-painted on 13 mesh. Total canvas size is 13 x 16.



Golden Gardener \$125

Melissa Shirley Designs. Hand-painted on 18 mesh. Total canvas size is 11 x 13



Ooh La La \$156

Mindy's Needlepoint Designs. Hand-painted on 18 mesh. Total canvas size is 13 x 13.



Rain Drops \$13

All About Stitching Designs. Hand-painted on 13 mesh. Total canvas size is 15 x 20.



Red and Pink Checkerboard Heart \$62

Melissa Shirley Designs. Hand-painted on 18 mesh. Total canvas size is 9 x 9.



English Wildflower Basket w/sg. \$180

Hand painted on 18 mesh by Kirk & Bradley. Canvas size 12 x 12.



Vigilant Vireos \$196

Charlie Harper canvas hand painted on 18 mesh by The Meredith Collection. Canvas size 13 x 20.



Cardinal Cradle Ornament \$90

Charley Harper by the Meredith Collection. Hand-painted on 18 mesh. Stitch Guide included. Total canvas size is 10 x 10.

February Calendar

Stitch In - Our next monthly ***Stitch In*** will be Saturday, February 17, 2018 from 1:00 to 4:00 pm. No instruction or fees – just a fun time with other great stitchers. Share your ideas and learn from others. Refreshments are provided.

Threads, Stitches and More - every Monday, 1:00 to 4:00 pm - an informal canvas embellishment class with Karen Chrissinger. Classes are \$11 for two hours and \$15 for three hours.

Sip and Stitch – every Tuesday, 7:00 to 9:00 pm - an informal canvas embellishment class, with Jill Elia - and wine. Classes are \$11.

Thursdays with Karen - every Thursday, 1:00 to 4:00 pm - an informal canvas embellishment class. Classes are \$11 for two hours and \$15 for three hours.

Private Classes – One-on-one sessions are also available. These sessions are \$25/hour and require advance arrangements.

February Birthday Bucks



Louise's Needlework

244 W. Olentangy St.
Powell, OH 43065

Phone: 614-436-3902
E-mail: jill@louisesneedlework.com

20% OFF Your Total Purchase

During the month of February, bring this coupon and proof of your birth date. One coupon per year per newsletter subscriber. May not be combined with other coupons and may not be used for the purchase of gift certificate or trunk show canvases. To use this coupon for special orders, coupon must be present and payment received at the time special orders are placed.

Expires February 28, 2018

Happy Stitching!