

# LIQS CHARITY HOSPITAL BUDDY

## INSTRUCTIONS

Use 11" x 22" of skin colored fabric.  
Remember children come in many different color

- Fold fabric in half along the long side - right sides together.
- Trace doll body pattern directly onto fabric.
- Pin fabric inside traced pattern to stabilize.
- Stitch on line leaving opening for stuffing.
- Cut 1/4" from stitching line.
- Clip curves and points - being careful not to cut stitching.
- Turn doll right side out and stuff firmly.
- Close opening with a ladder stitch

curve.  
do not stitch into point

DOLL  
BODY

Print at 100%

1"

curve.  
do not stitch into point

LEAVE AN OPENING  
TO STUFF

THE DOLL IS NONDESCRIPT EXCEPT FOR THE HOSPITAL GOWN.  
THE CHILDREN CAN PERSONLIZE IT WITH MARKERS OR  
BAND-AIDS AND ARE EVEN ENCOURAGED TO STICK IT WITH  
NEEDLES... IT HELPS THEM DEAL WITH ANXIETY AND FEEL MORE  
COMFORTABLE WITH WHAT IS GOING ON.

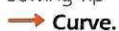
curve.  
do not stitch into point

STITCHING LINE

curve.  
do not stitch into point

curve.  
do not stitch into point

### Sewing Tip



#### Curve.

#### Do not stitch into point

Instead of stitching into the point and creating an inverted "V" take one stitch across to "curve" the stitching line. This will help with turning.

Alternative method. Great for multiple doll making.

- Create a reusable template by tracing the doll pattern onto Freezer Paper.
- Cut pattern from Freezer Paper and gently iron to wrong side of fabric which has been folded in half.
- Stitch around template leaving an opening for stuffing. Remove freezer paper.
- Cut 1/4" from stitching line.
- Clip curves and points.
- Turn doll right side out and stuff firmly.
- Close opening with a ladder stitch.

## LIQS CHARITY HOSPITAL BUDDY

INSTRUCTIONS FOR GOWN:

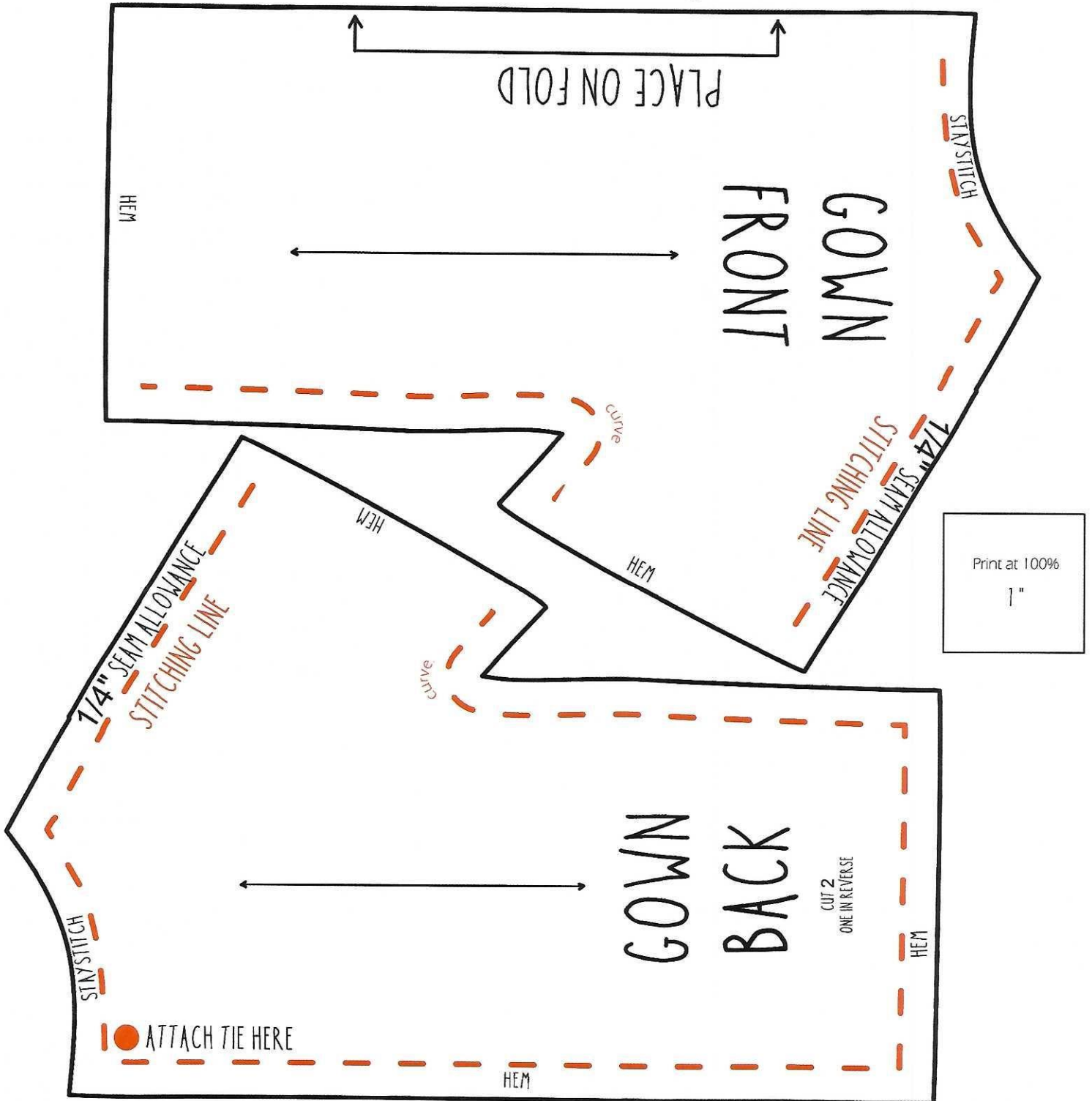
9" X17" of fun fabric.

- Fold long side of fabric in half - right sides together.
- Cut out pattern pieces on the outside of solid line.
- Pin pattern to fabric as indicated - cut on solid line.
- Stitch front gown to back gown together at shoulder seams
- Stay stitch neck line.
- Clip curves BEING CAREFUL NOT TO CUT STITCHING LINES.
- Fold neckline under 1/4". Stitch in place.

- Fold sleeve edges under 1/4". Stitch hem.
- Sew side seams and underarm together. CLIP CURVES.
- Fold bottom under 1/4". Stitch hem.
- Fold raw edges of gown back under 1/4". Stitch hem.

INSTRUCTIONS FOR TIES:

Use ribbon or fabric to create 2 ties approximately  $1/4"$  x  $10"$  each. If using fabric, cut  $1"$  x  $20"$  of fabric. Fold in half **WRONG** sides together. Open and fold raw edges to center. Fold in half. Stitch closed along open edge. Cut length of fabric in half. Stitch one tie to each side of gown at back.



Print at 100%

1"