

Miss Lacie's Promise

Workshop Requirements

Double: 75-1/2" x 103-1/2"

Queen: 103-1/2" x 103-1/2"

Experience Level: Intermediate

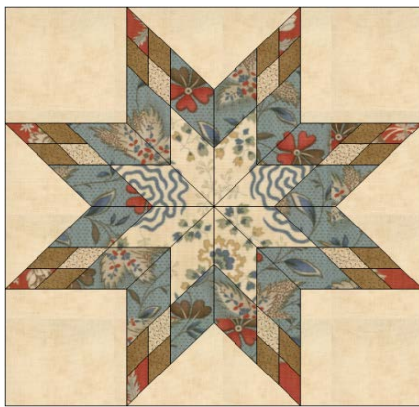
100% cotton fabrics are recommended

About This Quilt Design

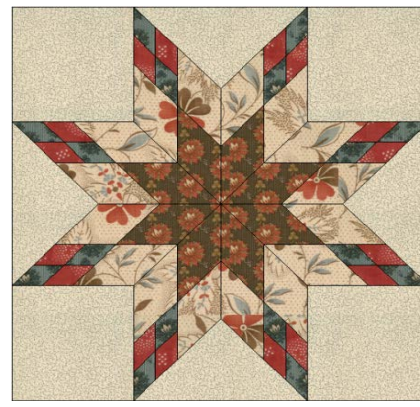
A very interesting quilt for any fabrics - wonderful as a scrap quilt, civil war fabrics or made with beautiful batiks. As the cuts are 2-1/2" and 1-1/2" strips, it would be easy to use Jelly Rolls and Honey Buns for scrappy stars from a fabric line – so simple!

- The Fons & Porter® Triangle Trimmer
- Mary Ellen's Best Press® on all fabric before cutting will help keep bias cuts from stretching.

Kentucky's Twinkling Star Block



Main Block A: Blue Star



Alternate Block B: Brown Star

FABRIC REQUIREMENTS

For Single Star requirements please refer to the Cutting Instructions.

Main Star (Blue)

- Cream floral print
- Blue clover print
- Cream small print 1
- Brown tonal print
- Red floral print 1
- Cream tonal Background

0.4m or 1/2 yd.
0.8m or 7/8 yd.
0.2m or 1/4 yd.
0.3m or 3/8 yd.
0.2m or 1/4 yd.
1.4m or 1-5/8 yds.

0.7m or 3/4 yd.
1.0m or 1-1/4 yds.
0.4m or 1/2 yd.
0.5m or 5/8 yd.
0.4m or 1/2 yd.
2.0m or 2-1/4 yds.

Alternate Star (Brown)

- Brown floral print
- Tan clover print
- Blue floral print
- Red floral print 2
- Blue floral print
- Cream light print Background

0.4m or 1/2 yd.
0.8m or 7/8 yd.
0.2m or 1/4 yd.
0.3m or 3/8 yd.
0.2m or 1/4 yd.
1.6m or 1-3/4 yds.

0.7m or 3/4 yd.
1.0m or 1-1/4 yds.
0.4m or 1/2 yd.
0.5m or 5/8 yd.
0.4m or 1/2 yd.
2.0m or 2-1/4 yds.

Border 1: Red floral print 1

0.6m or 5/8 yd.

0.7m or 3/4 yd.

Border 2: Cream small print 2

0.8m or 7/8 yd.

0.8m or 7/8 yd.

Border 3: Cream large print

1.7m or 1-7/8 yds.

2.0m or 2-1/4 yds.

Binding: Red floral print 2

0.7m or 3/4 yd.

0.9m or 1 yd.

Getting Ready for the Workshop:

We will be preparing some precut fabrics so that we can get the most done in class that we can. I recommend that you use the "1 block" cutting information to prepare strips for (1) each of the Main Block and Alternate Block only.

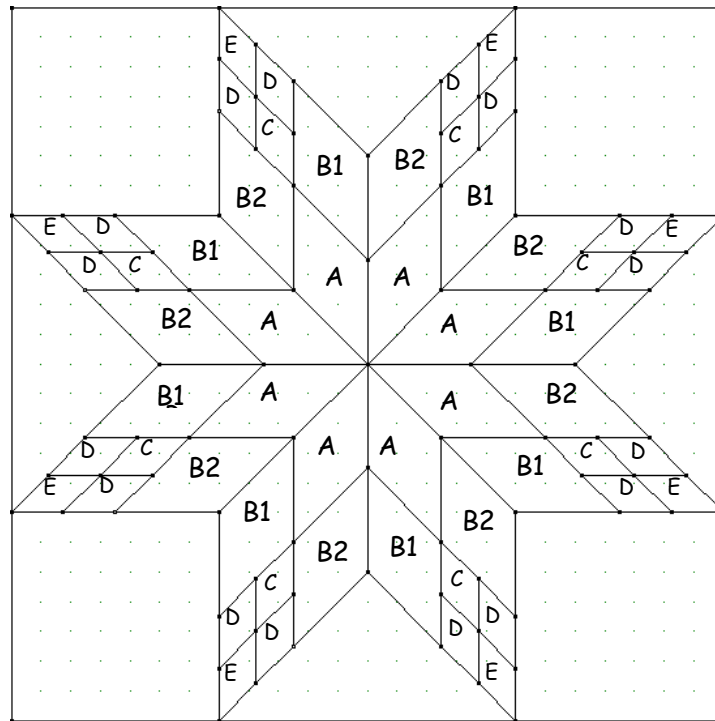
Nervous?

If you are unsure about your fabric placement, selection or techniques you are welcome to make the first 'sample' star from sample fabric. Follow the "1 block" cutting information to make (1) block.

Step 1: Cutting The Fabric

Please Note:

- WOF means "width of fabric" and refers to cutting from selvedge to selvedge.
 - Fabric will be cut as strips from WOF selvedge (approx. 42" in width). Strips are then subcut into the size and number needed. If fabric is not 42" in width, extra pieces may have to be cut.
 - Strips may be cut with fabric folded but when subcutting into the diamond pieces.
 - "+" indicates that a few extra pieces may have to be cut to complete the number required as per the specific chart.
1. Prepare (2) sets of separate labels (Main block and Alternate block) for fabric strips A, B1, B2, C, D, E or use ziplock baggie.
 2. Press fabric and cut into the required number of strips according to the chart below. Label strips clearly keeping strips for each block separate. **Background fabric will be cut according to Step 2 on page 3.**



Step 1: Cutting The Fabric – continued:

For a Single Block:		Cutting for 1 block:
A	Cream floral print	Cut (1) strip 2-1/2 x WOF
B1	Blue clover print	Cut (1) strip 2-1/2" x WOF
B2	Blue clover print	Cut (1) strip 2-1/2" x WOF
C	Cream small floral	Cut (1) strip 1-1/2" x WOF
D	Brown tonal	Cut (2) strips 1-1/2" x WOF
E	Red floral print	Cut (1) strip 1-1/2" x WOF


Proceed with this cutting ONLY if you are sure, sure, sure of your fabric selections.

Main Block A: Blue Star		Cutting for Double Size:	Cutting for Queen Size:
A	Cream floral print	Cut (5) strips 2-1/2 x WOF	Cut (7+) strips 2-1/2" x WOF
B1	Blue clover print	Cut (5) strips 2-1/2" x WOF	Cut (7+) strips 2-1/2" x WOF
B2	Blue clover print	Cut (5) strips 2-1/2" x WOF	Cut (7) strips 2-1/2" x WOF
C	Cream small print	Cut (3) strips 1-1/2" x WOF	Cut (4+) strips 1-1/2" x WOF
D	Brown tonal	Cut (6) strips 1-1/2" x WOF	Cut (8+) strips 1-1/2" x WOF
E	Red floral print	Cut (3) strips 1-1/2" x WOF	Cut (4+) strips 1-1/2" x WOF

Alternate Block B: Brown Star		Cutting for Double Size:	Cutting for Queen Size:
A	Brown floral print	Cut (5) strips 2-1/2" x WOF	Cut (7+) strips 2-1/2" x WOF
B1	Tan clover print	Cut (5) strips 2-1/2" x WOF	Cut (7+) strips 2-1/2" x WOF
B2	Tan clover print	Cut (5) strips 2-1/2" x WOF	Cut (7) strips 2-1/2" x WOF
C	Blue floral print	Cut (3) strips 1-1/2" x WOF	Cut (4+) strips 1-1/2" x WOF
D	Red tonal print	Cut (6) strips 1-1/2" x WOF	Cut (8+) strips 1-1/2" x WOF
E	Blue floral print	Cut (3) strips 1-1/2" x WOF	Cut (4+) strips 1-1/2" x WOF

Step 2: The Set-in Background Pieces – Oh, ‘Y’ Not?

Prepare, cut and label the background fabric pieces for (1 or 2) block(s) only. If you are cutting for (2) blocks and remember to cut the appropriate fabric for the Main block and the Alternate block.

For a Single Block:		Cut:	Subcut:
F	Background fabric	(1) strip 6-3/8" x WOF	Cut (4) 6-3/8" x 6-3/8" squares.
G	Background fabric	(1) 9-1/2" x 9-1/2" square	Cut  to make (4) triangles.

